

Enriching Lives



Grantee Impact Report

2003/2004

The Los Angeles County Board of Supervisors through the Arts Commission's Organizational Grants Program, funds approximately 9% of the County's 2,800 arts organizations with non-profit status.* **In fiscal year 2003/2004 \$2,377,000 was awarded to 262 arts organizations.** The 262 grantees included 41 large budget organizations with budgets over \$800,000, 91 mid-size organizations with budgets between \$100,000 and \$800,000 and 130 smaller organizations with budgets under \$100,000. This report follows up to last year's. It provides new findings and incorporates results from recent studies conducted by other organizations.

**Source: UCLA Center for Civil Society, November 2003*

■ Economic Impact

Los Angeles County is home to 32,599 arts-related businesses. This means that Los Angeles' creative community represents almost 6% of the nation's 548,000 arts-related businesses. Los Angeles' arts industry is fueling not only the regional economy, but the nation's in a significant way.

Source: Americans for the Arts' Creative Industries study

Los Angeles, New York and San Francisco are "Arts Super Cities" with a distinct artistic advantage over competing metropolitan areas due their large concentrations of artists—more than twice the national norm. Of the three super cities, Los Angeles ranked the highest in the number of performing artists, visual artists and musicians.

*Source: University of Minnesota's
Hubert H. Humphrey's Institute of Public Affairs*

According to *Forbes Magazine*, Los Angeles is the best place for culture and leisure in 2004 with New York coming in 2nd and San Francisco 4th.

The Arts Commission's 262 grantee organizations generated more than \$13,210,000 in local government taxes.

Source: Americans for the Arts' Arts & Economic Prosperity Calculations

■ Serving County Residents and Community Engagement

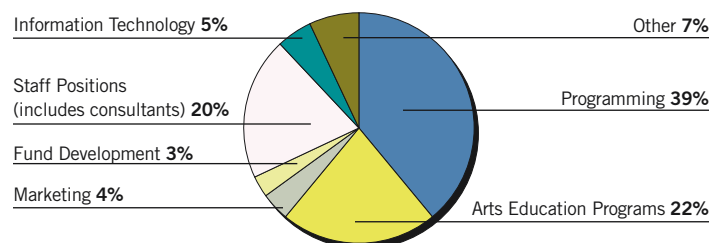
Of the 9,795,658 admittances provided by grantees for County residents:

19.8% were school-aged children

54.8% were free admittances

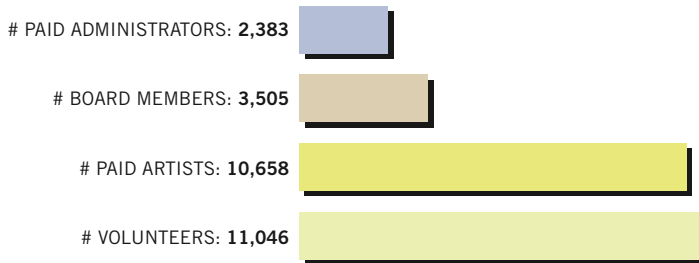
80% of grantees provided arts education programs for children ages 5-18.

HOW COUNTY FUNDS WERE USED BY ARTS ORGANIZATIONS



GRANTEE ORGANIZATIONS THRIVE ON THE COMMITMENT OF THEIR ARTISTS AND VOLUNTEERS.

PEOPLE POWER



The Role of Public Funding

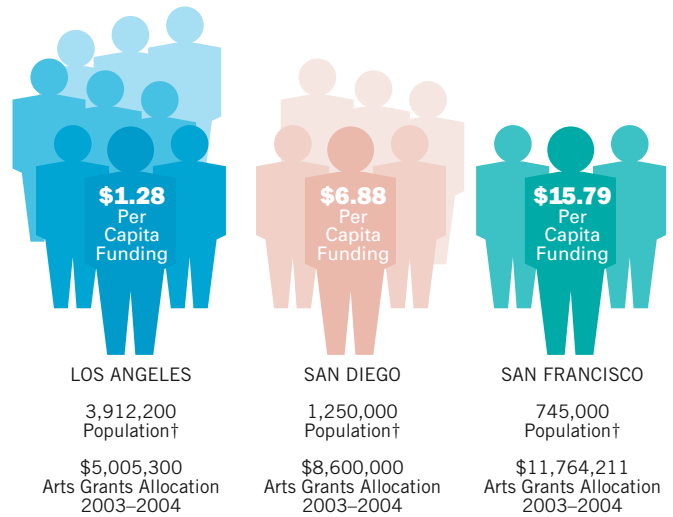
Arts in the Balance: A survey of Corporate, Foundation and Government Arts Funding in Los Angeles County, conducted by Southern California Grantmakers and the Los Angeles Arts Funders, showed that:

- Based on total arts giving reported for 2002/2003, the Los Angeles County Arts Commission was one of the top ten largest donors giving to County arts organizations. Together, the top ten donors accounted for 75% of arts funding in 2002.
- While 70% of private giving went to organizations with budgets over \$800,000, public dollars were balanced among organizations of all budget sizes.
- The average grant award from the private sector fell from \$57,694 in 1998 to \$41,156 in 2002.

Statewide Comparisons

Los Angeles residents continue to receive far less per person dollars in local government grant support to arts organizations than San Diego and San Francisco residents even when the arts-specific grant allocations of both Los Angeles City and County are combined. This chart does not represent government arts allocations given outside of established programs such as capital or public art expenditures. The chart below only accounts for the City of Los Angeles' residents. To add the number of residents for the entire Los Angeles County (10.1 million) would only further decrease the per capita allocation to \$0.50.

CITY COMPARISON*



*In Los Angeles, the combined City and County arts-specific grant allocation is used. In San Diego, the City grant allocation is used. In San Francisco, the City and County share the same exact territory; grants for the arts (hotel tax fund) allocation is used.

† City population based on 2002

The grantees included in this evaluation represent the cultural and geographic diversity of Los Angeles County. Disciplines represented by the grantees include arts education, dance, folk/traditional art forms, literary arts, music, theatre, visual/film-based arts, and service organizations. The information provided in this report is a result of self-reported information by grantees via applications and reports. The data represents activities for either fiscal year 2003/2004 (July 1, 2003 to June 30, 2004) or calendar year 2003.

Enriching Lives



www.lacountyarts.org



www.lacounty.info

For a complete list of grantee organizations, please visit the Arts Commission's website.

Los Angeles County Arts Commission
 374 Kenneth Hahn Hall of Administration
 500 West Temple Street • Los Angeles, CA 90012
 Tel 213.974.1343 • Fax 213.625.1765