

Since 1947

Los Angeles
County
Arts
Commission

John Anson Ford
Theatres

Summer Season

Inside The Ford

Arts
Education

Arts Education Survey

Grants and
Professional
Growth

Funding

Internships

Organizational Development

Arts Resources

About Us

Contact Us

Arts Links

Public/
Special Events

Open House

Holiday Celebration

Free Music Concerts

Folk and
Traditional Arts

1998-2001
Report of Activities

Mission Leadership

The mission of the Los Angeles County Arts Commission is to foster excellence, diversity, vitality and accessibility of the arts in the County of Los Angeles. The Commission plays a leadership role in cultural services for the county, providing information and resources to the community, artists, arts organizations and municipalities.

Los Angeles County Board of Supervisors

Gloria Molina,
First District
Yvonne Brathwaite Burke,
Second District
Zev Yaroslavsky,
Third District
Don Knabe,
Fourth District
Michael D. Antonovich,
Fifth District

Violet Varona-Lukens,
Executive Officer
David E. Janssen,
Chief Administrative Officer

Commissioners

Alis Clausen, President
2001-2002
Judith Galperson, President
2000-2001
Tomas Benitez, President
1999-2000
Betty Haagen, President
1998-1999

Carlos Barrón*
Arlene "Phoebe" Beasley
Aurelia Brooks
Ollie Blanning
Adrienne Hall
Robert Hankins
Laurel Karabian
Marjorie Lyte*
Ronald Rosen
Hope Warschaw
Rosalind Wyman*

*also past president

The following Commissioners also served during the period of this report:

Joyce Aimée
Sheldon Sloan

Staff

Laura Zucker,
Executive Director

Andrew Campbell,
Organizational
Development Manager
Ayanna Hudson,
Arts Education Program
Director

Martin I. Kagan,
Managing Director,
Ford Theatres

Lisa Richardson,
Folk & Traditional Arts
Manager

Nicole Werner,
Community Programs
Manager

Renae Williams,
Grants Manager

Susanna Erdos,
Ford Box Office Manager
Arthur Trowbridge,
Ford Production Manager
Sarah Watland,
Ford Operations Manager

Charlotte Frazer,
Office Assistant
Cindy Mendoza,
Executive Assistant

1998-2001 in Review

The Los Angeles County Arts Commission's vision, programs and budget have all expanded tremendously during the past three years to keep pace with our region's burgeoning cultural landscape. The leadership for this growth has come from the Los Angeles County Board of Supervisors, which recently received the **2001 County Arts Leadership Award** from Americans for the Arts for providing "an extraordinary example of how integration of the arts into a community greatly benefits its citizens."

The other driving force for this expansion of services was the arts community itself. The Arts Commission, working with Arts for L.A. and more than 150 leaders of arts institutions, led a **community-wide cultural planning effort** that identified intra-regional marketing and arts education as two critical issues to be addressed to insure a vibrant cultural life for our region.

The Arts Commission and staff in collaboration with a broad range of leaders - arts administrators, fellow arts funders, members of, concerned community volunteers, and the Board of Supervisors and their staffs - produced the following major accomplishments:

- Through funds allocated by the Board of Supervisors, the Commission's **annual grants to regional nonprofit arts organizations** grew from \$1.26 in 1998 to \$2.3 million in 2001. More than 100 of these organizations also received management assistance.

- The Arts Commission joined with the J. Paul Getty Trust in a partnership that **created the nation's largest arts internship program** to award more than \$1 million for visual, performing, and literary arts summer internships throughout Los Angeles County. Together, the Getty and the County introduce 300 college undergraduates to a variety of arts-related careers each year and help develop future cultural leaders.

- A new **\$1.6 million entryway to the Ford Amphitheatre was completed**, making the historic facility more accessible and welcoming to visitors. The entryway, which includes additional picnic areas and a waterfall, was funded by Proposition A, the Third Supervisorial District, and a significant private contribution by Edison International.

- The Arts Commission established a new partnership with A.S.K. Theater Projects and the Irvine Foundation to fund **Hot Properties at [INSIDE] THE FORD**, a series of new plays housed at the Ford's indoor theatre during the winter months.

- The Arts Commission launched an arts education initiative. The Commission partially funded and **commissioned *Arts in Focus***, the first-ever survey of arts education in Los Angeles County. The survey led to the establishment of an Arts Education Hub, funded by the California Arts Council and the Los Angeles County Quality and Productivity Commission. The hub will foster systemic sequential arts education in districts throughout the County.

- A new program to address the needs of Los Angeles County folk and traditional artists was implemented, **connecting folk artists with resources** through a county-wide database, e-mail listserv, gatherings, workshops, mentorships and funding opportunities.

- Seed funding from the Commission made possible the analysis of the databases of more than 100 arts organizations. This project led to the creation of "**The Big List**," a clearinghouse of lists of arts patrons for the region.

- The Arts Commission **hosted the 2000 Americans for the Arts Conference**, a week-long gathering for more than 1,000 national leaders in the arts which encompassed pre-conferences on public art, technical assistance, and united arts funds.

- The Commission-initiated and led California Cultural Tourism Initiative received a merit award from the California State Association of Counties (CSAC) and the **prestigious national Odyssey Award from the Travel Industry.**

Tomas Benitez
President 1999-2000

Judith A. Galperson
President 2000-2001

Alis Clausen
President 2001-2002

Grants

Organizational Grant Program (OGP)

In 1997 the Commission restructured its grant programs. The Organizational Grant Program (OGP) is subdivided into three categories based upon budget size. The new program concentrates on areas of advancement, sustainability and accessibility as a response to research and the needs of arts organizations and the communities they serve.

The grants program has steadily increased award amounts in order to have a greater impact on the County's arts community and to facilitate an increase in arts programming provided to County residents. The Arts Commission has played a pivotal role in the stabilization and growth of many arts organizations as a funder of organizational infrastructure and artistic project support, as well as professional development opportunities.

Guidelines and applications for the grants program, are available on the Arts Commission's website. Workshops are also offered to assist organizations in the completion of their applications.

The Commission utilizes discipline peer panels to review all applications and to make recommendations to the

Commission. The commissioners review these recommendations, make appropriate adjustments and submit funding recommendations to the County Board of Supervisors for final approval.

The organizations funded represent the cultural and artistic diversity that exemplifies the rich quality of life in Los Angeles County. The Arts Commission provides support to non-profit performing arts organizations, including arts education and folk/traditional arts; as well as non-profit architectural, visual and media arts organizations.

Organizational Grant Program I: Small-Budget Organizations

(annual operating budgets less than \$100,000)

The Organizational Grant Program for small organizations funds artistic and administrative advancement projects for arts organizations. OGP I grantees receive two years of funding with awards ranging from \$1,000 to \$10,000 per year. Some grantees are also offered technical assistance in the form of workshops or consultancies to foster organizational development.

Organizational Grant Program II: Mid-Size Budget Organizations

(annual operating budgets between \$100,000 and \$800,000)

The Organizational Grant Program for mid-size organizations annually funds artistic and administrative sustainability projects for arts organizations. OGP II also provides organizational development assistance to grantees, in the form of workshops, one-on-one consultancies, and professional development opportunities to assist organizations in achieving goals of sustainability. The minimum grant award in this category is \$5,000.

Organizational Grant Program III: Large-Budget Organizations

(annual operating budgets greater than \$800,000)

The Organizational Grant Program for large budget organizations provides annual support for projects designed to increase the accessibility of the arts for Los Angeles County residents. Organizations awarded in this category include major Los Angeles County institutions. In 2000, a minimum grant award of \$15,000 was established.



Children visiting the Museum of Contemporary Art.

Organizational Grant Program I Awards: Small Budget Organizations

	1998-1999	1999-2000	2000-2001
24 th Street Theatre		\$ 5,105	\$ 5,105
About Productions		\$ 4,157	\$ 4,157
Aeolian Ballet Theatre/LA			\$ 4,068
AguaLuna Dance Company	\$ 1,220	\$ 1,220	
American Repertory Dance Company	\$ 4,691	\$ 2,692	\$ 2,692
Antaeus Company		\$ 1,772	\$ 1,772
Arroyo Arts Collective		\$ 1,532	\$ 1,532
A.R.T. Team: "Art on Saturdays"	\$ 1,800	\$ 1,800	
AVAZ International Dance Theatre		\$ 4,349	\$ 4,349
Ballet Folklorico del Pacifico	\$ 2,375		
Beem Foundation for the Advancement of Music	\$ 3,644	\$ 3,125	\$ 3,125
Beyond Baroque Foundation		\$ 6,821	\$ 6,821
Black Artists Network Development		\$ 5,233	\$ 5,233
Body Weather Laboratory			\$ 1,000
Bottom's Dream		\$ 1,057	\$ 1,057
Buffalo Nights Theatre Company		\$ 1,000	\$ 1,000
Burbank Chamber Orchestra			\$ 5,638
California Youth Theatre		\$ 2,980	\$ 2,980
Cambodian New Year Festival			\$ 3,723
Cambridge Singers	\$ 7,926	\$ 5,280	\$ 5,280
Camerata Singers of Long Beach	\$ 5,250	\$ 5,250	\$ 4,821
Cantori Domino	\$ 3,833		\$ 7,170
Carson Community Symphony Association	\$ 3,956		\$ 1,965
Cedar Street Theatre	\$ 4,130	\$ 4,130	\$ 3,613
Center for Land Use Interpretation			\$ 8,633
Chamber Orchestra of the South Bay	\$ 3,720		
Circle X Theatre Company	\$ 2,994	\$ 2,994	
City Garage	\$ 6,840	\$ 6,840	
Claremont Young Musicians Orchestra			\$ 6,239
Collage Dance Theatre	\$ 4,830	\$ 4,830	\$ 4,522
Collage Ensemble Inc.		\$ 1,000	\$ 1,000
Covina Concert Band	\$ 2,041	\$ 1,798	\$ 1,798
CSUN Youth Orchestra			\$ 5,718
Culver City Chamber Orchestra		\$ 1,870	\$ 1,870
Culver City-Marina del Rey- Westchester Symphony		\$ 3,333	\$ 3,333
DA Center for the Arts	\$ 8,830	\$ 3,732	\$ 3,732
Dance Kaleidoscope Festival			\$ 7,240
Dance Resource Center	\$ 9,794		\$ 4,116
Dancecorps		\$ 2,248	\$ 2,248
Danza Floricanto/USA		\$ 2,963	\$ 2,963
Diavolo Dance Theater	\$ 4,794	\$ 4,794	
Downey Symphonic Society	\$ 4,345	\$ 4,212	\$ 4,212
Eagle Rock Community Cultural Association			\$ 4,406
Echo Park Arts Festival			\$ 1,000
Evidence Room			\$ 4,134
Fabulous Monsters			\$ 1,000
Fil-Am-ARTS	\$ 4,420	\$ 5,356	\$ 5,356
Foliage Theatre Company		\$ 1,000	\$ 1,000
Francisco Martinez Dancetheatre		\$ 3,809	\$ 3,809
Fresh Start Performing Arts Academy			\$ 1,584
Gallery 825/Los Angeles Art Association		\$ 4,890	\$ 4,890
Glendale Youth Orchestra	\$ 4,166	\$ 4,166	\$ 4,094
Grupo de Teatro SINERGIA		\$ 3,753	\$ 3,753
Guild Opera Company			\$ 2,420
Hae Kyung Lee & Dancers			\$ 3,783
HeArt Project, The	\$ 7,830	\$ 7,830	\$ 8,831
Helios Dance Theatre			\$ 2,720
Imagination Workshop		\$ 3,753	\$ 3,753
INCA, the Peruvian Music & Dance Ensemble	\$ 7,800	\$ 5,320	\$ 5,320
Indecent Exposure Theater Company		\$ 4,100	\$ 4,100
Inglewood Cultural Arts, Inc.		\$ 4,734	\$ 4,734
Inside Out Community Arts		\$ 6,642	\$ 6,642
Jewish Women's Theatre Project		\$ 1,000	\$ 1,000
Kayamanan Ng Lahi Philippine Folk Arts		\$ 3,822	\$ 3,822
Keshet Chaim Dance Ensemble			\$ 5,043
Khmer Cultural Center			\$ 2,631



Vox Femina Los Angeles

Ed Krieger

Organizational Grant Program I Awards: Small Budget Organizations



Ed Krieger

AguaLuna Dance Company

	1998-1999	1999-2000	2000-2001
Kultura	\$ 3,920	\$ 3,920	\$ 2,975
L.A. Freewaves		\$ 6,445	\$ 6,445
Latino Theatre Company		\$ 2,439	\$ 2,439
Lodestone Theatre Ensemble			\$ 2,527
Long Beach Chorale			\$ 1,532
Loretta Livingston & Dancers	\$ 6,704	\$ 3,804	\$ 3,804
Los Angeles Chamber Singers & Capella		\$ 2,138	\$ 2,138
Los Angeles Children's Ballet Theatre		\$ 1,033	\$ 1,033
Los Angeles Choreographers & Dancers			\$ 3,058
Los Angeles Doctors Symphony	\$ 1,950	\$ 1,950	
Los Angeles Modern Dance & Ballet			\$ 3,240
Los Angeles Pilgrim Men's Chorus	\$ 1,000	\$ 1,000	
Los Angeles Poverty Department		\$ 6,091	\$ 6,091
Los Angeles Women's Shakespeare Company	\$ 9,000	\$ 9,000	\$ 5,784
Moving Arts	\$ 3,938	\$ 2,470	\$ 2,470
Mural Conservancy of Los Angeles	\$ 3,165	\$ 3,165	\$ 1,532
Music Circle		\$ 5,238	\$ 5,238
NewTown Pasadena Foundation	\$ 1,500	\$ 1,808	\$ 1,808
Pacific Composers Forum		\$ 1,000	\$ 1,000
Pacific Islander Community Council	\$ 2,600		\$ 1,710
Pacific Serenades		\$ 3,553	\$ 3,553
Pasadena Shakespeare Company		\$ 4,517	\$ 4,517
Peninsula Symphony Association		\$ 5,008	\$ 5,008
Percussion Artists Workshop Music		\$ 1,000	\$ 1,000
Performing Arts for Life and Education Foundation		\$ 1,000	\$ 1,000
Playwrights Arena		\$ 3,466	\$ 3,466
Rio Hondo Symphony Association	\$ 2,982	\$ 5,738	\$ 5,738
Robey Theatre Company		\$ 2,231	\$ 2,231
Rosanna Gamson/World Wide	\$ 4,163	\$ 4,163	\$ 2,039
Sacred Fools Theatre Company		\$ 1,671	\$ 1,671
San Fernando Valley Symphony	\$ 5,200		\$ 3,153
San Fernando Valley Youth Chorus			\$ 2,006
Santa Cecilia Orchestra			\$ 5,475
Santa Clarita Ballet Company	\$ 3,340	\$ 3,340	\$ 5,364
Santa Clarita International Film Festival		\$ 2,192	\$ 2,192
Santa Clarita Repertory Theatre		\$ 2,704	\$ 2,704
Santa Monica Symphony	\$ 5,000	\$ 5,754	\$ 5,754
Shulman Concerts, Inc./In the Music Room		\$ 1,177	\$ 1,177
Silayan Dance Company	\$ 4,920		
South Bay Master Chorale		\$ 3,665	\$ 3,665
South Coast Chorale		\$ 4,669	\$ 4,669
Southeast Symphony Association	\$ 4,059	\$ 4,059	\$ 6,502
Southern California Dance Theater			\$ 3,667
Story Project			\$ 7,090
TeAda Productions		\$ 1,840	\$ 1,840
Theatre Arts Festival for Youth		\$ 2,389	\$ 2,389
Theatre of Hope for Abused Women			\$ 3,540
Theatre of NOTE		\$ 2,660	\$ 2,660
Topanga Symphony	\$ 1,500	\$ 1,000	\$ 1,000
Towne Street Theatre	\$ 3,015	\$ 1,872	\$ 1,872
Trade City Productions			\$ 1,256
Trip Dance Theatre	\$ 1,000	\$ 1,000	\$ 1,701
Valentina Oumansky Dramatic Dance Foundation			\$ 1,300
Venice Arts Mecca	\$ 4,420	\$ 4,420	\$ 2,678
Venture West Theatre Company	\$ 4,080	\$ 4,080	
Vox Femina Los Angeles			\$ 4,886
Watts Cinema & Education Center		\$ 5,910	\$ 5,910
Watts Summer Festival, Inc.	\$ 3,250		
West Hollywood Chorale			\$ 1,000
West Los Angeles Symphony	\$ 4,269	\$ 4,269	\$ 3,177
Winifred R. Harris'/Between Lines	\$ 3,647	\$ 3,647	
Yiddishkayt Los Angeles	\$ 4,963	\$ 4,963	\$ 6,820
Young Artists International		\$ 3,376	\$ 3,376
Young Saints Scholarship Foundation			\$ 3,078
Zadonu African Music & Dance Company	\$ 3,250	\$ 4,456	\$ 4,456

Organizational Grant Program II Awards: Mid-Size Organizations

	1998-1999	1999-2000	2000-2001
18th Street Arts Complex	\$ 9,170	\$11,583	\$19,918
A Noise Within	\$13,879	\$28,453	\$17,927
Actors Alley			\$ 5,000
Actors' Gang		\$ 6,719	
AMAN Folk Ensemble	\$12,792		
American Academy for Dance and Kindred Arts		\$ 5,000	\$ 5,241
American Youth Symphony	\$11,280	\$14,005	\$14,476
Angeles Chorale	\$ 3,750	\$ 5,000	\$ 5,000
Apollo Amused/Musica Angelica	\$ 5,000	\$ 5,000	\$ 5,000
Art Share Los Angeles			\$ 5,000
Arts, Inc.	\$ 3,250		
Ballet Folklorico Ollin Inc.	\$ 3,250		
Bethune Theatredanse	\$ 3,250		\$ 5,000
Blank Theatre Company, The		\$ 5,377	\$ 5,000
California EAR Unit			\$ 5,000
Bilingual Foundation of the Arts	\$18,383		
California Lawyers for the Arts		\$13,825	\$14,866
Catalina Island Performing Arts Foundation			\$ 5,000
Celebration Theatre	\$ 7,335		\$ 7,599
Center for the Studies of Political Graphics		\$10,000	\$10,000
Chamber Orchestra of the South Bay		\$ 5,000	\$ 5,000
Colony Theatre Company		\$11,129	\$ 8,905
Cornerstone Theater Company	\$16,628	\$22,522	\$24,980
Deaf West Theatre Company	\$13,495	\$13,929	\$14,031
Diavolo Dance Theatre			\$ 5,000
East L.A. Classic Theatre			\$10,832
East West Players	\$18,804	\$22,126	
Fountain Theatre	\$12,629	\$14,934	\$11,712
Friends of the Junior Arts Center	\$ 6,066	\$ 7,946	
Gay Men's Chorus of Los Angeles	\$ 7,965	\$18,443	\$11,206
Glendale Symphony Orchestra	\$ 7,700	\$ 5,000	
Grand Vision Foundation	\$ 4,753	\$ 5,000	
Great Leap			\$10,000
Highways	\$ 7,704	\$ 5,033	\$ 5,150
International City Theatre	\$ 9,042		\$10,459
International Documentary Association	\$12,900		\$17,124
Jazz Bakery Performance Space		\$13,497	\$16,914
Jazz Tap Ensemble	\$ 9,941	\$10,170	\$ 8,704
Korean American Museum	\$ 4,478	\$ 5,000	
Living Literature Colors United		\$ 9,824	\$ 9,366
Long Beach Opera	\$10,375	\$10,489	\$17,290
Los Angeles Baroque Orchestra		\$ 5,000	\$ 5,000
Los Angeles Chamber Ballet	\$ 6,661	\$ 6,427	\$ 5,000
Los Angeles Children's Chorus		\$ 7,123	\$ 7,410
Los Angeles Contemporary Exhibitions	\$ 8,786		\$ 7,441
Los Angeles Jewish Symphony		\$ 5,837	\$ 5,000
Los Angeles Mozart Orchestra	\$12,781	\$ 9,053	\$ 9,764
Los Angeles Music and Art School		\$12,438	\$14,954
Lula Washington Contemporary Dance Foundation	\$10,000	\$17,682	\$19,473
Museum of Jurassic Technology, The			\$ 6,798
Museum of Neon Art	\$ 2,434	\$ 5,000	
Music Circle	\$ 8,956		
New Victory Theatre, The			\$ 5,000
Odyssey Theatre Ensemble	\$13,549	\$15,400	\$14,509
Opera California		\$ 5,000	
OUTFEST	\$ 8,560	\$14,902	\$16,288
Pacific Resident Theatre		\$ 7,405	\$ 6,815
Palos Verdes Community Arts Association	\$ 9,232	\$30,770	\$30,099
Pan African Film Festival	\$ 8,963	\$ 6,265	\$ 6,047
Pasadena Conservatory of Music		\$ 9,723	\$10,867
Pasadena Dance Theatre	\$ 4,883	\$ 7,565	\$ 8,620
Pasadena POPS Orchestra	\$ 9,538		
PEN Center USA West		\$ 9,218	\$10,562
Peninsula Symphony Association	\$ 5,000		
Performing Tree	\$14,764	\$27,590	\$27,573



Public Corporation for the Arts sends artists, such as this Afrikan Cultural Center storyteller, into the community.



Musica Angelica Baroque Orchestra (Apollo Amused)

Organizational Grant Program II Awards: Mid-Size Organizations

	1998-1999	1999-2000	2000-2001
Plaza de la Raza	\$15,000	\$ 16,669	\$15,493
Rachel Rosenthal Company		\$ 5,000	
Rhapsody in Taps		\$ 5,000	
Ryman-Carroll Foundation			\$12,638
Santa Monica Museum of Art	\$13,222	\$35,417	\$27,495
Self-Help Graphics & Art	\$11,678	\$10,986	\$ 7,414
Shakespeare Festival/LA	\$16,349	\$19,210	\$17,345
Side Street Projects		\$10,000	\$ 5,000
So. Calif. Asian American Studies, Inc./Visual Communications			\$14,176
Social and Public Art Resource Center		\$13,139	
Southeast Symphony		\$ 6,502	
Southwest Chamber Music	\$10,518	\$14,008	\$15,696
Symphony In The Glen	\$ 8,607	\$ 5,658	
Theatre of Hearts/Youth First		\$ 5,000	\$ 7,308
Torrance Cultural Arts Center		\$ 7,028	
Valley Cultural Center	\$ 4,000	\$ 6,626	\$ 5,000
Virginia Avenue Project		\$10,000	\$10,000
Visual Communications		\$ 9,973	
We Tell Stories	\$ 8,782	\$ 9,060	
West Coast Ensemble	\$ 5,303		\$ 9,244
Will Geer Theatricum Botanicum	\$10,547	\$ 6,655	\$ 5,000
Young Musicians Foundation	\$10,000	\$16,602	\$19,272



A Noise Within

Organizational Grant Program III Awards: Large Budget Organizations

	1998-1999	1999-2000	2000-2001
Alex Regional Theatre		\$10,000	\$12,761
American Film Institute	\$30,289	\$16,774	\$37,004
Armand Hammer Museum of Art and Cultural Center			\$27,956
Armory Center for the Arts	\$11,157	\$10,000	\$17,745
Autry Museum of Western Heritage		\$24,194	\$22,862
Bilingual Foundation of the Arts		\$10,000	\$10,000
Center Theatre Group	\$60,000	\$27,734	\$106,030
Children's Museum of Los Angeles			\$11,625
Colburn School, The	\$ 9,276		
East West Players			\$10,860
Education Division/Music Center of Los Angeles County		\$19,091	\$20,811
Geffen Playhouse		\$15,068	\$22,380
Grand Performances		\$10,000	\$12,114
Independent Feature Project/West			\$22,523
Japanese American Cultural and Community Center		\$17,797	\$24,024
Japanese American National Museum			\$13,400
L.A. Theatre Works	\$16,062	\$10,000	\$11,175
Long Beach Museum of Art	\$12,463	\$10,000	\$13,675
Long Beach Symphony	\$16,779	\$18,848	\$25,521
Los Angeles Chamber Orchestra	\$19,326	\$12,903	\$20,393
Los Angeles Children's Museum		\$10,000	
Los Angeles Master Chorale	\$14,219	\$12,696	\$19,329
Los Angeles Opera	\$75,071	\$49,875	\$73,986
Los Angeles Philharmonic	\$138,978	\$79,208	\$98,990
Museum of Contemporary Art, Los Angeles		\$30,894	\$30,931
Museum of Latin American Art		\$10,000	\$16,779
Pacific Asia Museum	\$ 8,167	\$10,000	\$10,000
Pasadena Playhouse	\$15,530	\$15,240	\$24,363
Pasadena Symphony	\$17,406	\$11,899	\$20,513
Public Corporation for the Arts			\$10,000
Skirball Cultural Center	\$31,339	\$17,779	\$31,561
Southwest Museum			\$25,689
Theatre L.A.			\$10,000



Joyce Bordarampé

INCA - The Peruvian Ensemble

Arts Internships



Marcelo Coelho

Intern Celeste Thompson at Cornerstone Theater Company

In 1999, the Los Angeles County Board of Supervisors established the Los Angeles County Arts Internship Program, which provides internships for nonprofit performing, presenting, literary, and municipal arts organizations, as a companion program to the Getty Multicultural Internship Program, which provides internships to museums and visual arts organizations. Combined, these programs became the largest undergraduate arts internship program in the United States with funding of more than \$1 million. A model of arts partnerships, the Getty provides con-

vening and educational opportunities for County interns designed to introduce them to the many possibilities for careers in the arts.

The purpose of the County's program is to provide undergraduate students with meaningful on-the-job training and experience in working in nonprofit arts organizations, while assisting arts organizations to develop future arts leaders. Through this program, students develop a deeper understanding of the work involved in nonprofit arts administration, better understand the role of the arts in a community, and develop "real life" business skills that can be put to use in future careers. During the course of the internships, participating organizations gain the assistance of extra staff to help with special or seasonal projects. Participating organizations play an important role in molding and shaping potential new workers in the arts field who may go on to arts leadership positions on staffs or boards.

The first interns participated in the program in the summer of 2000. 123 interns were placed with 65 arts organizations. In 2000, internships were 12 weeks in length. Each organization received a grant of \$4,080 for each intern it hosted. \$3,600 was

paid to the intern, with \$480 granted to the organization to cover administrative expenses associated with the program.

In the summer of 2001, internships were 10 weeks in length, which matches the Getty program's design. 144 interns were placed with 87 organizations. Each organization received a grant of \$3,400 for each intern it hosted. Students received a stipend of \$3,000, with organizations receiving \$400 to cover administrative expenses.

County internships are open to college undergraduates of all races and ethnic backgrounds who either reside in Los Angeles County or attend colleges or universities located in Los Angeles County.



Organizations Granted Internships in 2000

Actors' Gang
Alex Regional Theatre
American Academy for Dance
& Kindred Arts
American Youth Symphony
A Noise Within
Apollo Amused/Musica Angelica
Bilingual Foundation of the Arts
Blank Theatre Company, The
California Lawyers for the Arts
California Youth Theatre
Center Theatre Group
Collage Dance Theatre
Cornerstone Theater Company
Danza Floricanto/USA
East West Players
Education Division
/Music Center of Los Angeles County
Festival of Philippine Arts
and Culture
Foliage Theatre Company
Gay Men's Chorus of Los Angeles
Glendale Symphony Orchestra
Grand Performances
Grupo de Teatro SINERGIA
HeArt Project, The
Highways
Indecent Exposure
Theater Company
Inside Out Community Arts
Japanese American Cultural
& Community Center
Jazz Tap Ensemble
L.A. Freewaves
L.A. Theatre Works
Living Literature Colors United
Long Beach Symphony
Los Angeles Chamber Orchestra
Los Angeles Children's Chorus
Los Angeles Jewish Symphony
Los Angeles Master Chorale
Los Angeles Mozart Orchestra

Los Angeles Music and Art School
Los Angeles Opera
Los Angeles Philharmonic
Los Angeles Women's Shakespeare Co.
Lula Washington Contemporary
Dance Foundation
Moving Arts
Odyssey Theatre Ensemble
Pasadena Dance Theatre
Pasadena Playhouse
Pasadena Shakespeare Company
Pasadena Symphony
PEN Center USA West
Performing Tree
Plaza de la Raza
Rachel Rosenthal Company
Shakespeare Festival/LA
Skirball Cultural Center
Southwest Chamber Music
TeAda Productions
Theatre L.A.
Theatre of Hearts/Youth First
Theatre of NOTE
Towne Street Theatre
Valley Cultural Center
Venice Arts Mecca
Yiddishkayt Los Angeles
Young Artists International
Young Musicians Foundation



Organizations Granted Internships in 2001

24th Street Theatre
A Noise Within
Actors' Gang
African Marketplace
Alex Regional Theatre
American Academy for Dance
and Kindred Arts
American Film Institute
Art Share Los Angeles
Bilingual Foundation of the Arts
Blank Theatre Company, The
California Lawyers for the Arts
California Youth Theatre
Catalina Island Performing
Arts Foundation
Center Theatre Group
Circle X Theatre Company
City of Culver City
City of Los Angeles
Cultural Affairs Department
City of Manhattan Beach
City of Norwalk Recreation
& Park Services Department
City of Pasadena Cultural Affairs
Division
City of Pico Rivera -
Centre for the Arts
Collage Dance Theatre
Cornerstone Theater Company
Danza Floricanto/USA
Deaf West Theatre
Diavolo Dance Theater
East West Players
Education Division
/Music Center of Los Angeles County
Evidence Room
Fil-Am ARTS
Grand Performances
Great Leap
Guild Opera Company
HeArt Project, The
Henry Mancini Institute

Highways
Hollywood Arts Council
Indecent Exposure Theater Company
Inside Out Community Arts
International City Theatre
International Documentary
Association
Japanese American Cultural
and Community Center
Jazz Tap Ensemble
Kidspace Children's Museum
L.A. Theatre Works
Lancaster Performing Arts Center
Latino Theatre Company
Long Beach Symphony
Los Angeles Arts Academy
Los Angeles Chamber Orchestra
Los Angeles Children's Chorus
Los Angeles Choreographers
& Dancers
Los Angeles Jewish Symphony
Los Angeles Master Chorale
Los Angeles Music and Art School
Los Angeles Opera
Los Angeles Philharmonic
Lula Washington Contemporary
Dance Foundation
Mexican Cultural Institute
Moving Arts
Multicultural Music and Art
Foundation of Northridge
Odyssey Theatre Ensemble
OUTFEST
Pasadena Dance Theatre
Pasadena Playhouse
Pasadena Shakespeare Company
Pasadena Symphony
Performing Tree
Plaza de la Raza
Rosanna Gamson/World Wide
Santa Clarita Repertory Theatre
Shakespeare Festival/ LA
Skirball Cultural Center
Southwest Chamber Music
Stages Theatre Center

TeAda Productions
Theatre L.A.
Theatre of Hearts/Youth First
Theatre of Hope for Abused Women
Theatre of NOTE
Valley Cultural Center
Venice Arts Mecca
Watts Summer Festival
Yiddishkayt Los Angeles
Young Artists International
Young Musicians Foundation



John Anson Ford Theatres

This complex, including a 1,240-seat outdoor amphitheatre and an 87-seat indoor theatre, is owned by the County of Los Angeles and operated by the Arts Commission. Situated in a 45-acre Los Angeles County Regional Park in the Hollywood Hills, the Ford occupies a hillside site that is both beautiful and challenging. The year 2000 marked the dedication of a new \$1.6 million entryway, which made the theatres accessible and visible.

Katherine Spitz Associates Inc. of Los Angeles, landscape architects, dramatically trans-

formed the entryway. Formerly a steep concrete walkway flanked by trees, the entryway now features meandering paths, pocket picnic areas, a waterfall and plantings of sycamore, wild lilac, star jasmine and acacia, among many other species.

The landing at the base of the Ford building was enlarged and renamed Edison Plaza in recognition of the significant support provided to the project by Edison International through its Arts for the Community Initiative. The plaza is a gathering place where patrons eat, shop and pick up information.

With the opening of the new entryway, the facility is now completely ADA (Americans with Disabilities Act) compliant.

Funds for the entryway project came from the Proposition A Safe Neighborhood Parks Act of 1996, the County of Los Angeles and Edison International. Direct and in-kind contributions by Edison International included lighting, signage and marketing assistance. The leadership of Los Angeles County Supervisor Zev Yaroslavsky, in whose district the Ford is located, and Ginny Kruger, chair of the John Anson Ford Theatre Foundation, was vital to the project.

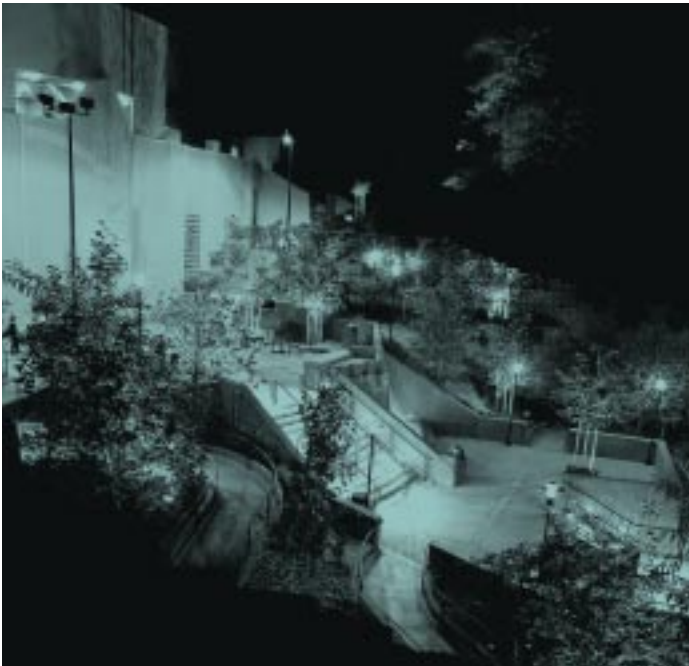
Ford Amphitheatre Season

This summer arts series in the 1,240-seat outdoor amphitheatre increases public awareness and enjoyment of the historic theatre dating from 1920 and helps Los Angeles County-based arts organizations achieve higher visibility and attract new audiences. The series, known as Summer Nights at the Ford from its inception in 1993 through the 2000 season, encompasses music, dance, theatre, film and family events. It is a partnership of the Commission and participating organizations. During the 1999, 2000 and 2001 seasons,

50 Los Angeles County arts groups/producing organizations took part in the series. Film, family and theatre offerings in particular expanded during these years.

Through the partnership arrangement, the Commission provides the theatre for a modest percentage of box office receipts, a basic technical package, all front of house services, a marketing campaign for the series as a whole and technical assistance to help participants market their individual events. The organizations are responsible for delivering the artistic product and keep the lion's share of the box office receipts. Participants are chosen by a competitive application process; each year proposals are accepted in early fall for the following summer.

Through this collaboration audiences are discovering or re-discovering the Ford. Attendance for the 1999, 2000 and 2001 seasons totalled more than 80,000. Both artists and audiences of the Ford Amphitheatre series continue to reflect the myriad cultural traditions represented in Los Angeles County.



Paul Antico

The Ford's new entryway opened in May 2000.



The Fountain Theatre presented "Gypsy Flamenco" featuring Maria Bermudez.

1999 SEASON

June 13 – October 17

African Village Music Festival
 Agape International Choir⁴
 Albert Torres
 /Dia de San Juan Festival
 Bluegrass Association of Southern
 California/Bluegrass at the Ford
 Brazilian Nites Productions
 /Caetano Veloso
 Dance Kaleidoscope²
 Danza Floricanto/USA
 East L.A. Classic Theatre/
*Much Ado About Nothing*⁶
 Hollywood Arts Council
 /An Evening with Lalo Schifrin
I PALPITI Chamber Orchestra
I PALPITI Soloists
 International Documentary
 Assoc. & Hollywood Film
 Festival / *WattStax*
 Ivri NASAWI/Poetry of Peace:
 Spiritual Music of the
 Middle East⁴
 Jazz Bakery
 Jazz Tap Ensemble
 JazzAntiqua Dance
 & Music Ensemble
 JP Nightingale
 /Teddy Bear Picnic Parade²
 Los Angeles Baroque Orchestra
 Los Angeles Chamber Orchestra
 Winds with Jeffrey Kahane³
 Los Angeles Mozart Orchestra
 /*The Magic Flute*
 Lula Washington Dance Theatre
 Miami String Quartet³
 OUTFEST '99 Film Festival
 Rossetti String Quartet
 with Armen Guzelimian³
 Sacred Music of Los Angeles⁴
 TRIP Dance Theatre
 Verdugo Hills Showtime Chorus
 Winifred R. Harris'
 Between Lines
 Yiddishkayt Los Angeles
 & the MARIACHI USA
 Foundation/Viva Klezmer –
 L'Khayim Mariachi²

2000 SEASON

June 3 – September 17

African Village Music Festival
 Agape International Choir
 Albert McNeil Jubilee Singers
 Meets Founder's Choir
 Amanda McBroom
 & Ann Hampton Callaway
 Angeles String Quartet³
 Ballet Folklorico del Pacifico
 Blue Palm with Lacombe-Ruiz⁵
 Bluegrass Association of Southern
 California/Bluegrass at the Ford
 Brazilian Nites Productions
 /Elba Ramalho
 & Geraldo Azevedo
 Dance Kaleidoscope
 Danza Floricanto/USA
 /Latino L.A.⁶
 East L.A. Classic Theatre
 /*Cyrano de Bergerac*⁶
 First AME Church
 & The International House
 of Blues Foundation⁵
 First AME Church
 Freedom Choir
 Hollywood Arts Council
 /Hipsters, Jazz and the
 Beat Generation
 Hysterica Dance Co.
I PALPITI Chamber Orchestra
 International Documentary
 Association/*On the Road
 with Duke Ellington*
 Jazz Bakery
 Jazz Tap Ensemble/Tribute to
 the Nicholas Brothers
 Kathy Kallick & Grassology⁵
 Kidspace Children's Museum,
 San Francisco Mime Troupe
 & Pasadena Shakespeare Co.⁵
 Los Angeles Baroque Orchestra
 Los Angeles Chamber Orchestra
 Strings³
 Los Angeles Modern Dance
 and Ballet
 Los Angeles Mozart Orchestra
 Los Angeles Women's
 Shakespeare Company
 /*Twelfth Night*

Lula Washington Dance Theatre
 Lula Washington's Youth
 Dance Ensemble¹
 OUTFEST 2000 Film Festival
 Santa Cecilia Orchestra
 St. Petersburg String Quartet³
 Winifred R. Harris'
 Between Lines
 Yiddishkayt Los Angeles
 /*The Klezmatics*²

2001 SEASON

May 26 – September 24

Academia/ History of Rock⁵
 Aeolian Ballet Theatre/LA
 African Village Music Festival
 Agape International Choir
 Amanda McBroom
 & Julie Wilson
 Art Deco & His Society
 Orchestra
 Ballet Folklorico del Pacifico
 Bluegrass Association of Southern
 California/Bluegrass at the Ford
 Brazilian Nites Productions
 /Brazilian Summer Festival
 2001 - Olodum
 Circus Millennia⁵
 Eroica Trio³
 Fountain Theatre/Sonidos
 Gitanos (Gypsy Flamenco)
 Hollywood Arts Council/Jazz
 on the Latin Side All-Stars
 Home Grown⁵
 Hysterica Dance Co.
I PALPITI Chamber Orchestra
 Instrumental Women 2001
 International Documentary
 Association/*Don't Look Back –
 Behind the Scenes with
 Bob Dylan*
 Jaliyaa: Traditional West African
 Music, Stories and Dance⁵
 Jazz Bakery
 Jazz Tap Ensemble
 Kurt Weill Celebration
 Los Angeles Baroque Orchestra
 Los Angeles Chamber Orchestra
 Members & Jeffrey Kahane³



Ken Hively, Los Angeles Times

Jazz Tap Ensemble staged a tribute to the Nicholas Brothers.

Los Angeles-St. Petersburg
 Russian Folk Orchestra
 Los Folkloristas
 Lula Washington Dance Theatre
 Musica Angelica Baroque
 Orchestra
 OUTFEST 2001 Film Festival
 Santa Cecilia Orchestra
 Shanghai String Quartet³
 Sister Celebration
 TRIP Dance Theatre
 Troubadour Theater Company⁶

¹ Family series participant

² Presented family event in addition to evening event

³ Part of Ford Theatre Foundation Chamber Music series

⁴ Part of World Festival of Sacred Music – The Americas

⁵ Part of Ford Theatre Foundation Big/World/Fun series

⁶ Presented Big/World/Fun event in addition to evening event



Ed Krieger

Children are admitted free to Ford Theatre Foundation-sponsored family events.

[INSIDE] THE FORD

The small indoor theatre at the Ford entered a new chapter in 2000. Following its transformation into a state-of-the-art 87-seat space in early 1998, the Arts Commission hosted a subsidized rental program for theatres without permanent homes in 1998-99 and was dark in 1999-2000 while construction of the new entryway proceeded. In November 2000 [INSIDE] THE FORD reopened under a new collaborative arrangement with A.S.K. Theater Projects.

The Arts Commission's mission is to support local arts organizations and [INSIDE] THE FORD is ideal for staging new plays. A.S.K. helps develop but does not produce new plays. For the first Hot Properties at [INSIDE] THE FORD season three Los Angeles area-based theatre companies were chosen to stage new works that had received readings or workshops at A.S.K. but had not been produced in Los Angeles.

This successful formula will be enhanced in future seasons by a major contribution from the James Irvine Foundation secured in 2001. A.S.K. Theater Projects will re-grant these funds to participating companies to subsidize artists' fees and design elements.

2000-2001 Hot Properties at [INSIDE] THE FORD season

Playwright's Arena
World premiere of *Sleepwalk* by Daniel Cariaga

Timescape Arts Group
Los Angeles premiere of *Two-Headed* by Julie Jensen

Overtone Industries
World premiere of *The Woman Who Forgot Her Sweater* by O-Lan Jones and Kathleen Cramer

Ford Theatre Foundation

As the official fund raising arm of the Ford Theatre, the Ford Theatre Foundation enhances Los Angeles County's support for the programs at the Ford. The Foundation's primary responsibility is to secure the future of this programming with contributions from individuals, corporations, and foundations.

The Foundation also sponsors some of the programming on the Ford Amphitheatre season. Beginning in 1998, it raised the resources to continue the summer chamber music series. The Foundation's commitment to family programming, reflected in subsidizing the distribution of free tickets to family events through the L.A.'s Best program since 1996, expanded in



Cat Chin

Sleepwalk at [INSIDE] the Ford

2000 with the debut of the Big/World/Fun series. The series combines quality entertainment for young children and their parents with theme-related crafts activities prior to the performance. In 2001 the Foundation's support made possible free admission of children (adults pay \$4) to Big/World/Fun events.

The Foundation also plays a role in occasional special events: it sponsored the U.S. premiere of WDR Radio of Germany's Kurt Weill Celebration which opened the 2001 season.

2001 Board of Directors

Ginny Kruger,
Chair
Edmund D. Edelman,
Vice Chair
May Poole,
Treasurer
Laura Zucker,
Secretary
Phoebe Beasley
Stuart Berton
Arline Chambers
William Flumenbaum
Milinda Martin
Joy Picus
Maryann Reyes
Michael H. Smith
Ignacio De La Torre

2001 Staff

Martin I. Kagan,
Managing Director
Mark Stambler,
Development Director
Patrick Brown,
Administrative Coordinator

Holiday Celebration

Los Angeles County Holiday Celebration

The Board of Supervisors has sponsored an admission-free show as a holiday gift to the people of the County every December 24 since 1960. Attendance has become a seasonal tradition for many Angelenos.

The 1000-1500 performers participating in the show each year represent the many cultures and holiday traditions found in Los Angeles County. Community and professional choirs, orchestras, dance and theatre companies from throughout the County are invited to apply. Forms are available in the summer for that year's program.

Holiday Celebration has been presented at the Dorothy Chandler Pavilion of the Music Center since that building's opening in 1964. The six-hour show is broadcast live on KCET, and starting in 2000, re-broadcast in its entirety on December 25. Annual attendance at the Pavilion averaged 6,000 in the 1998-2000 period. Hundreds of thousands more enjoyed Holiday Celebration on television.



Ed Krieger

Ballet Folklorico Paso de Oro

1998 PARTICIPANTS

Agape International Choir
 AguaLuna Dance Company
 Angel City Chorale
 Art In Motion Youth Dance Company
 Ballet Folklorico Paso de Oro
 Bobby Rodriguez Latin Jazz
 Brandeis Bardin Klezmer Ensemble
 Cambridge Singers
 Chinese Classical Music Ensemble
 Clara Ward Singers
 Coro Alegria
 Gay Men's Chorus of Los Angeles
 GloryStar Children's Chorus
 Hamilton High School Gospel Choir
 Higher Praise
 Hollow Log
 Hollywood High School Equinox Youth Dance Company
 Inner Voices
 International Children's Choir
 Jazz Tap Ensemble
 JazzAntiqua
 Jung Im Lee Korean Dance Academy
 Long Beach Ballet Theatre
 Los Angeles Chinese Chorale & Southern California Youth Chorus
 Los Angeles Citywide Children's Christian Choir
 Opera California Youth Choir
 Painted Black Productions /Chocolate Nutcracker
 Rattle Up
 University of Judaism
 Valley Beth Shalom Choir and Ensemble
 Vox Femina
 Wanamaker
 We Tell Stories
 Winifred Harris' Between Lines

1999 PARTICIPANTS

Activities for Retarded Children & Adults Handbell Choir
 Agape International Choir
 AguaLuna Dance Company
 Alan Eder & Friends
 Ballet Folklorico Paso de Oro
 CalPhil Foundation
 Cantor's Chanters of Temple Beth Hillel
 Chinese American Dancing Group
 Chinese Classical Music Ensemble
 Church of Scientology Choir
 Cor Cymraeg De California
 Coro Alegria
 Coventry Carolers of Southern California
 Filipino Choir of St. John and the Mahiwaga Singers
 Gay Men's Chorus of Los Angeles
 International Children's Choir
 Jung Im Lee Korean Dance Academy
 L.A. Irish Dancers
 LA Shir Choir
 Le Lycee Francais de Los Angeles Children's Choir
 Long Beach Ballet Theatre
 Los Angeles Citywide Children's Christian Choir
 Los Angeles Gospel Messengers
 Martin Dancers
 Moscow Classical Ballet
 Rangoli Dance Company
 San Fernando Valley Youth Chorus
 Sisters Against Drug & Alcohol Abuse (SADAA)
 Southern California Youth Chorus
 St. Lucy's Christmas Big Band
 Vox Femina Los Angeles
 West Coast Singers
 West Hollywood Chorale
 Zenshuji Zendeko Taiko

2000 PARTICIPANTS

Activities for Retarded Children & Adults Handbell Choir
 AguaLuna Dance Company
 Americana Dance Theatre, Inc.
 Art Deco & His Society Orchestra
 Art McAllister and Gospel One
 Church of Scientology Choir
 Cor Cymraeg De California
 Coro Alegria
 Coventry Carolers of Southern California
 Danza Floricanto
 Foothill Brass Quintet
 Gay Men's Chorus of Los Angeles
 Glorystar Children's Chorus
 Gospel Philippines Chorale
 Hollywood High School Equinox Youth Dance Company
 International Children's Choir
 Johnny Polanco y Su Conjunto Amistad
 Jung Im Lee Korean Dance Academy
 Kaleidoscope Singers
 Kultura Philippine Folk Arts-Himig Singers
 LA Salsa Kids
 Le Lycee Francais De Los Angeles Children's Choir
 Long Beach Ballet
 Los Angeles Chinese Chorale & Southern California Youth Chorus
 Los Angeles Citywide Children's Christian Choir
 Mariachi Reyna de Los Angeles
 Marla Bingham Contemporary Ballet
 Michelle Berne & Celebration Arts
 Opera California
 Orquesta Charangoa
 Pieces of Eight
 Salvation Army Tabernacle Children's Chorus
 San Fernando Valley Youth Choir
 Second Baptist Cathedral Choir
 Sierra Park Elementary School Folklorico
 Sinai Akiba Academy
 State Street Ballet
 Trip Dance Theatre
 Valley Beth Shalom Congregational Choir
 Vox Femina Los Angeles
 World Kulintang Institute
 Zenshuki Zendeko
 Zoot



Ed Krieger

Korean Dance Academy

Open House

Los Angeles Arts Open House

Inspired by a national campaign to promote October as National Arts and Humanities Month and successful examples of the Arts Open House idea in other American cities, the Commission has established the first Saturday in October as a day when a wide variety of performing and visual arts events is open free to the public.

Arts Open House exposes people to arts experiences and in doing so increases the likelihood they will become supporters of the arts. Arts Open House now offers more than 150 admission-free options in more than 36 communities throughout Los Angeles County, including music, dance and theatre performances, workshops, seminars, arts and crafts exhibits and demonstrations. To assist the public in planning their Arts Open House itineraries, the Commission organizes events around centers of activity. These centers are designated areas where the public can come, park and spend a few hours, easily walking between events.

The Commission is grateful to the hundreds of arts organizations, individual artists and facilities who have helped make Arts Open House a true reflection of the arts in Los Angeles. All Los Angeles-based arts organizations are invited to participate in Arts Open House. Participation forms are available in April and due in June for the following October.



Art Car Exhibition at Inglewood's Open House site

Centers of Activity 1998

18th Street Arts Complex
with Crossroads School
/Santa Monica
California State University,
Los Angeles
California State University,
Northridge
Cerritos Center for the
Performing Arts
Museum Row on the
Miracle Mile
Music Center of
Los Angeles County
Pasadena Art Space at
One Colorado
Public Corporation for
the Arts/Long Beach
Torrance Cultural Arts Center
Watts Towers Arts Center

Centers of Activity 1999

18th Street Arts Complex
with Crossroads School
/Santa Monica
Baldwin Park Performing
Arts Center
California State University,
Los Angeles
California State University,
Northridge
Conjunctive Points Dance
Studio/Culver City
DA Center for the Arts
with the Pomona Arts Colony
Museum Row on the
Miracle Mile
Music Center of
Los Angeles County
Pasadena Art Space at
One Colorado
Public Corporation for
the Arts/Long Beach
Watts Towers Arts Center

Centers of Activity 2000

18th Street Arts Complex
with Crossroads School
/Santa Monica
Armory Center for
the Arts/Pasadena
Baldwin Park Performing
Arts Center
California State University,
Northridge
Canyon Theatre Guild
/Santa Clarita
Inglewood Parks and Recreation
Museum Row on the
Miracle Mile
Music Center of
Los Angeles County
Palos Verdes Art Center
Self-Help Graphics
/East Los Angeles

Musicians Trust Fund Concerts

The County matches funds from the Recording Industries' Music Performance Trust Funds through Musicians Union Local 47 to create a program that pays musicians to present free concerts in public sites. Each year more than 150 performances are arranged for county parks, libraries, probation camps, senior centers and other community sites throughout Los Angeles County.

Applications from nonprofit organizations interested in hosting concerts are accepted three times a year.



King Cotton

MUSICIANS TRUST FUND CONCERTS SPONSORED 1998-99

Host	Musician
18th Street Arts Complex	Hollow Log Santa Monica Symphony Community String Quartet Santa Monica Symphony Woodwind Quintet Yoruba House Percussion Ensemble
39th Annual Los Angeles County Holiday Celebration	Agape Choir Band Bobby Rodriguez Latin Jazz Brandeis Bardin Klezmer Ensemble Hollow Log Jazz Tap Ensemble Pieces of Eight Rattle Up Sierra Chamber Players String Family Players Valley Beth Shalom Jazz Ensemble Winifred Harris' Between Lines Ensemble
A.C. Bilbrew Library Almansor Park Arcadia Community Center Autry Museum of Western Heritage	Nedra Wheeler Quartet California Festival Orchestra Bobby Rivas Salsa Band Gold Rush Varieties Los Californios Eric Ekstrand Ensemble Fred Ramirez Jazz Ensemble Hammersmith Band Leslie Baker House Party Sapadilla Steel Fusion The Eric Ekstrand Ensemble Tony Giaimo Big Band Pacific Contemporary Music Center Ensemble
Barnes Park Amphitheatre Braille Institute of America Burton Chase Park	Ravi Coltrane Trio Chris Ho Jazz Ellis Island Klezmer Band
Cal State Los Angeles/Music Hall	Saturday Night Bath String Family Players La Sinfonica del Barrio Septet Ira Schulman's Four Winds Bill Cunliffe Duo The Hodads Fine Arts Trio Jim McAuley
Cal State Northridge/Performing Arts Center Calabasas Tennis and Swim Center Grand Performances @ California Plaza Central Juvenile Hall Claremont Library Covina Civic Park Cudahy Library City of Culver @ City Hall	
Culver City Library East Los Angeles Library	



Rob Sims

Adaawe

Host	Musician	Host	Musician
Fairfax Library	Ira Schulman Ensemble	Pasadena Memorial Park	Frank Capp & Juggernaut
Farnsworth Park	John Tirabasso Jazz Ensemble	Pearblossom Park	Debby Porter
Furman Park	Memo Bernabei Orchestra	Probation Camp Afflerbaugh	Saturday Night Bath
Green Meadows Recreation Center	Armonia Azul	Probation Camp Holton	Saturday Night Bath
Hacienda Heights Library	Chinese Classical Music Ensemble	Probation Camp Kilpatrick	Hammersmith Band
Harbor Gateway Branch Library	The New Caribbean	Probation Camp Paige	Saturday Night Bath
Harbor-UCLA Medical Center	Bobby Matos and his Afro-Cuban Jazz Ensemble	Probation Camp Routh	Billy Mitchell Blues Band
Hawthorne Public Library	Dixie Dazzlers	Rosemead Library	Imbroglia Quintet
Hollenbeck Home Retirement Community	Art Deco and His Society Orchestra	Rosemead Park	Rudy Macias Latin Jazz Quintet
Huntington Park Library	Everardo Sandoval Mariachi	Rowland Heights Library	Imbroglia Quintet
Jewish Home for the Aging	The Erick Ekstrand Ensemble	Royal Oaks Manor	Bach to Blues Trio
La Canada-Flintridge Library	John B. Williams Trio	San Pedro Regional Library	Steel Fusion
La Crescenta Library	Gail Lissauer	Santa Monica Civic Auditorium	Great American Swing Band
La Mirada Library	Debussy Trio	Self Help Graphics	Agustin Lira & Grupo Alma
Lankershim Arts Center	Paul Livingston Classical Indian Trio	Smith Park	Jornaleros del Norte
Las Virgenes Library	Dave Winstone Trio	South Gate Park	Ross Altman
Leimert Park Jazz Festival	Art Davis Jazz Quintet	Southern California Blues Society	Howard Reynolds
Los Angeles County Civic Center Mall	Horace Tapcott Big Band	St. Elmo Village	Susie Hansen Band
Los Angeles County Museum of Art	Blay Ambolley and the African Highlife Band	Steinmetz Park	The Dale Eymann Band
Los Angeles Public Library	Johnny Polanco y Conjunto Amistad	Suzanne Park	John Juke Logan
MacArthur Park	King Cotton	Torrance Cultural Arts Center	Da Lion and Marcus Miller Ensemble
MacLaren Children's Center	Maiden Voyage All Stars	VA Medical Center/West Los Angeles	Art Deco and His Society Orchestra
Malaga Cove Plaza Library	Frank Capp & Juggernaut	Valencia Library	Everardo Sandoval Mariachi
Malibu Arts Festival	New American Quartet	Valley Cultural Center	Frank Oliver & The California Stampede
Malibu Library	Makina Loca	Watts Towers Arts Center	MAG's Element
Manhattan Beach Library	The George Bohanon Sextet	West Covina Library	The Hodads
Mid-Valley Regional Library	Chinese Classical Music Ensemble	Westlake Village Library	The Eric Ekstrand Ensemble
Morgan Park	Bobby Rodriguez Latin Jazz	Westside Jewish Community Center	Bobby Matos Afro-Cuban Jazz Ensemble
Motion Picture & TV Fund	Hollow Log	Wisburn Library	Bone Soir
Motion Picture and TV Retirees Club	Steed Woodwind Quintet	Woodcrest Library	Buddy Childers Band
Museum of Latin American Art	New Winds Quintet		Steed Woodwind Quintet
Norwalk City Hall	Conjunto Los Ponchos		Bernie Pearl
Occidental College/Keck Theatre	Imagine		Jim Morris Dixieland Band
Pacific Design Center Amphitheatre	Ray Oliver Orchestra		Frank Capp & Juggernaut
Paramount High School Auditorium	Kenny Sheldon Orchestra		Anderson String Quartet
Pasadena Art Space at One Colorado	Sierra Chamber Players		Many Axes
	Sapadilla		Bobby Rodriguez Trio
	Ross Altman		Storytellers & Troubadours
	Kishin Daiko		Richard Bernard
	Steed Woodwind Quintet		Kenny Sheldon Orchestra
	ASKEW		Hollow Log
	Michael Session Band		Bach to Blues Trio
	Trinidad Steel Drum		



Rudy Regalado

MUSICIANS TRUST FUND CONCERTS SPONSORED 1999-2000

Host	Musician
40th Annual Los Angeles County Holiday Celebration	California Philharmonic Chinese Classical Music Ensemble Hollow Log Pieces of Eight Foothill Brass Quintet Tango Americano Fred Ramirez Latin Jazz Band Dixie Dazzlers Doowah Riders Eric Ekstrand Ensemble Gabriel's Horns Hammersmith Band Joe Banks & Friends Shakeh Tony Giamo Orchestra Bobby Matos Afro-Cuban Jazz Ensemble
Angelo Iacoboni Library Braille Institute of America Burton Chace Park	Bobby Rodriguez Latin Jazz Band Trio Lesen Tu Dave Winstone Duo Fine Arts Trio Altadena Jazz Band Bobby Rodriguez Latin Jazz Band Lesa Terry Ensemble New American Quartet Alan Broadbent Trio Musical Spirits Go-Go Stroke Club The Swingin' Honey Drippers Louis Bellson Big Band Bobby Matos Afro-Cuban Ensemble Susie Hansen Latin Jazz Band Rudy Regalado y Chevere Bernie Pearl Blues Band Bach to Blues Trio Pasquale Beth Sussman Bobby Rodriguez Latin Jazz Band Eddie Baytos & The Nervis Bros. Leon Mobley African Drummers & Dancers Rudy Regalado y Chevere Bill Holman Orchestra Buddy Childers Big Band
C.M. Brakensiek Library	
Civic Park Claremont Library	
Culver City Library Farnsworth Park	
Frances Goldwyn Lodge Geffen Contemporary Museum Goethe Institute	
Grand Performances @ Cal Plaza Harbor-UCLA Medical Center	
Jackie Robinson Park	
La Canada Flintridge Library La Crescenta Library La Mirada Library Los Angeles County Civic Center Mall	
Los Angeles County Museum of Art	

Host	Musician
Malibu Arts Festival Manhattan Beach Library Media Park	Juggernaut Band Steed Woodwind Quintet Adaawe Le Jazz Hot Band Hodads Sapadilla Gerald Wiggins Trio Johnny Polanco y Conjunto Amistad Sapadilla Roy Gaines Blues Band Rastine Calhoun Quintet Susie Hansen Latin Jazz Band Saturday Night Bath Billy Mitchell Uptown Band Saturday Night Bath Hammersmith Band Saturday Night Bath Saturday Night Bath New American Quartet
Morgan Park	
Museum of Contemporary Art Museum of Latin American Art	
Norwalk Civic Center Pacific Design Center Palos Verdes Art Center Pasadena City Hall Probation Camp Afflerbaugh Probation Camp Fred Miller Probation Camp Holton Probation Camp Kilpatrick Probation Camp Mendenhall Probation Camp Paige Rancho del Valley Crippled Children's Society San Dimas Library Santa Catalina Island Interpretive Center Santa Monica Library Santa Monica Senior Recreation Center Smith Park	Dave Winstone Trio Doug MacDonald Trio
South Gate Park St. Elmo Village Steinmetz Park	Debussy Trio Kenny Sheldon Orchestra
Sunset Hall	Mariachi Plata Sapadilla Dale Eyman Band Rhythm & Rhyme Art Deco & His Society Orchestra Hodads Mariachi Plata The Big Band Staff Fine Arts Trio Bach to Blues Sapadilla Buddy Childers Big Band Susie Hansen Latin Jazz Band Mariachi Sol de America GT Guapacha Avalon Cats Jim McAuley's Renaissance to Rap Stephanie Osborne Kenny Sheldon Orchestra Bobby Rodriguez Latin Jazz Band Rudy Regalado y Chevere
Suzanne Park Torrance Cultural Arts Center	
Val Verde Park Valencia Library Veteran's Park West Covina Library	
Westlake Village Library Westside Jewish Community Center Whittier Narrows Park	



Leon Mobley and Da Lion

MUSICIANS TRUST FUND CONCERTS SPONSORED 1999-2000 cont'd

Host	Musician
William S. Hart Park	Homestead
Willowbrook Senior Center	Nedra Wheeler Quartet
Wiseburn Library	The Fleet Street Band
Woodcrest Library	Bach to Blues Trio
Young Saints Scholarship Foundation	Buddy Collette Combo

MUSICIANS TRUST FUND CONCERTS SPONSORED 2000-01

Host	Musician
18th Street Arts Complex	King Cotton
41st Annual Los Angeles County Holiday Celebration	Art Deco & His Society Orchestra
	Banda Chapala
	Johnny Polanco y su Conjunto Amistad
	Members of the Jewish Symphony Orchestra Charangoa
	World Kulingtang
	Southern California Early Music Consort
	Coro Alegria
	Pieces of Eight Polka Band
	Foothill Brass Quintet
Adventure County Park	Phil Upchurch Band
Altadena Library	Carl Randall Quintet
Angelo Iacaboni Library	Candi Sosa Salsa Trio
Armory Center for the Arts	Members of Hollow Log
Artesia Library	Fred Ramirez Latin Jazz Band
Braille Institute of America	Fred Ramirez Latin Jazz Band
Bresee Foundation	Bobby Matos Afro-Cuban Ensemble
Burbank Media City Center	String Family Players
Burton Chace Park	Avalon Cats
	Doo Wah Riders
	Erik Ekstrand Ensemble
	Hammersmith Band
	Jimbo Ross
	Joe Banks & Friends
	King Cotton
	Lyle Douglas Jazz Band
	Pop's D Grind Orchestra
	Steel Fusion
	Susie Hansen Latin Jazz Band
	Tom Noland Band
	Tony Giamo Big Band
	Shakeh

Host	Musician
C. M. Brakensiek Library	Rudy Macias Latin Jazz Band
Cal State Northridge /Performing Arts Center	Billy Childs Chamber Jazz Sextet
Old Town Calabasas	Tierra
Carolyn Rosa Park	Rudy Regalado y Chevere
City of Culver City @ City Hall	Susie Hansen Latin Jazz Band
Cudahy Library	Buzzworld
Culver City Library	Fine Arts Trio
Culver City Senior Center	Pieces of Eight Polka Band
Fairfax Library	Ira Schulman Baroque Ensemble
Farnsworth Park	Bobby Rodriguez Band
	Valerie King
Four Seasons West Ski Club	Rastine Calhoun Quintet
Geffen Contemporary Museum	Francisco Aguabella
Goethe Institute	Musical Spirits
Grand Performances @ Cal Plaza	California E.A.R. Unit
Hacienda Heights Library	Steven Dick Flamenco Guitarist
Harbor-UCLA Medical Center	Bobby Matos Afro-Cuban Ensemble
	Zydeco Party Band
Hawthorne Library	Eddie Baytos and the Nervis Bros.
	The New Orleanians
Hollenbeck Home Retirement Community	Phil Upchurch Band
Inglewood Senior Center	Swing Time
Israel Levin Senior Center	Rudy Regalado y Chevere
Jackie Robinson Park	Kurt Weill Orchestra
John Anson Ford Theatre	Chinese Classical Music Ensemble
Kidspace Children's Museum	The Dixiebelles & Beaus
	Steed Woodwind Quintet
Langley Senior Citizens Center	White Lightnin'
LaVerne Library	Armando Guitierrez Trio
Leuzinger High School	Eddie Baytos & The Nervis Bros.
Little Toyko Union Center	Leon Mobley African Drummers & Dancers
Los Angeles County Civic Center Mall	

Host	Musician
	Bruce Ray Band
	John B. Williams
	Rudy Regaldo y Chevere
	AJAMA
Los Angeles County Museum of Art	Bill Holman Big Band
	Juggernaut Band
	Miles from Home
Los Angeles County Probation Department	
Magic Johnson Park	Miles from Home
MacLaren Children's Center	Larry Nash & Co.
Manhattan Beach Public Library	Steed Woodwind Quintet
S. Mark Taper Foundation Amphitheatre	Ethereal Ensemble
Mary-Lind Foundation	
Morgan Park	Barbara Morrison Quintet
Motion Picture & T.V. Retirees	Sapadilla
Motion Picture TV Home	Kenny Sheldon Orchestra
Mount Wilson Institute	New American Quartet
Museum Row	Sierra Chamber Players
	Errol J. & Company
	Mariachi Elegante
Music Center of Los Angeles County	Bill Cunliffe Sextet
	Francisco Aguabella
	NoHo Arts District
	Yve Evans Trio
Norwalk Civic Center	Mariachi Plata
Palos Verdes Art Center	Rastine Calhoun Quintet
Paramount Pond	Bob DeSena Latin Jazz Band
Pasadena City Hall	Susie Hansen Latin Jazz Band
Probation Camp Fred Miller	Billy Mitchell Blues Band
Probation Camp Holton	Saturday Night Bath
Probation Camp Kilpatrick	Hammersmith Band
Probation Camp Mendenhall	Saturday Night Bath
Probation Camp Munz	Saturday Night Bath
Probation Camp Paige	Saturday Night Bath
Probation Camp Scott	Saturday Night Bath
Probation Camp Scudder	Saturday Night Bath
Plummer Park	Joe Barile Trio
Rancho Los Amigos Rehabilitation Center	Rastine Calhoun Quintet
Richard Rioux Park	
Rimgrove Park	John B. Williams Trio
Roy Campanella Park	Louis Taylor Jazz Band
Santa Monica Public Library	Miles from Home
Santa Monica Senior Recreation Center	Debussy Trio
Schabarum Park	Kenny Sheldon Orchestra
Smith Park	
St. Elmo Village	The Bog Band
	King Cotton
	Art Deco Band
	Freedom Jazz Movement

Host	Musician
Steinmetz Senior Center	The New Orleanians
Sunset Hall	Bach to Blues Trio
Torrance Cultural Arts Center	Mariachi Sol de America
Treder Park	Eddie Baytos & the Nervis Bros.
Val Verde Park	Charlie Jene & the Champion All Stars
	Mariachi Sol de America
Valencia Library	GT Guapacha
Veterans Administration Medical Center	Bernie Pearl Blues Band
Westlake Village Library	
Westside Jewish Community	Stephanie Osborne
Whittier Narrows Park	Kenny Sheldon Orchestra
William S. Hart Park	Avalon Cats
	Homestead
Wilshire Children's Services	The Desert Breeze
	African American Chamber Music Society
Woodcrest Library	Bach to Blues



World Kulintang Institute

Arts Education

Acting in concert with Arts for LA, a coalition of senior arts leaders in Los Angeles that has been meeting regularly since 1993 to advocate for public support of the arts, the Arts Commission launched an arts education initiative in 2000. It commissioned and partially funded *Arts in Focus*, the first-ever survey of arts education in Los Angeles County released in May 2001.

Because Los Angeles is the largest and most populous county in the nation with 1745 schools and 1.7 million students, the *Arts in Focus* study can be seen as a significant national indicator. The students in the districts surveyed represent 27% of all students enrolled in public schools in K-12 in California, and 3.4% of all students enrolled in public schools K-12 in the nation. Information was obtained through in-depth, in-person interviews conducted with officials from 80 of the 82 school districts in L.A. County.

Arts in Focus reveals the lack of a systemic approach to teaching the arts and wide variations in the degree to which arts are included in the educational experience.

Commissioned to provide much-needed baseline information, the study addresses arts education resources, curriculum, activities, the value of parental support, policy, partnerships, and existing successful programs.

The survey is a departure point from which to seek improvement. It led to the establishment of an Arts Education Hub in 2001, funded by the California Arts Council and the Los Angeles County Quality and Productivity Commission, which will foster systemic sequential arts education in districts throughout the County.

Highlights of the study include the following:

- While school leaders profess a unanimous and encouraging belief about the value of arts education to learning, there is a disappointing lack of systematic approaches to teaching art forms such as music, visual arts, dance, and theater. Among the districts surveyed, 37% reported *no* defined sequential arts education in any discipline, at any school level.
- There is a shortage of qualified arts teachers—the current countywide ratio is only one arts specialist for every 1200 students.

- Los Angeles district leaders have a strong desire to improve arts education, but are given no real incentives to develop comprehensive, sequential systems to teach the arts.

- Nearly 50% of officials surveyed cited “lack of instructional time in students’ schedules as the most significant challenge.” Many districts said “what gets tested gets taught,” and because the arts are not included in mandatory standardized tests, other subjects take priority.

- Parental participation is a key factor. Without the support of parents, many districts would not have arts programs.

- While 80% of the school districts say they seek partnerships for financial input and stability, the non-profit arts education partners on which districts rely are often more resource-strapped than the public schools.

Despite these challenges, the study finds good news about arts education:

- Five of the most populous school districts in the county, representing 55% of the student population, have both an arts education policy and notable future plans.

- The State of California has established a Framework and Standards for arts education; and the University of California and California State University systems have an arts requirement for entrance to their schools.

- In 2000, the California Arts Council received an additional \$10 million for state arts education. The California Department of Education has also increased funding for the arts.

The full report can be downloaded at www.lacountyarts.org. For further information contact the Arts Commission’s Arts Education Program Director.



Folk & Traditional Arts

In March 2001, the Commission added a new program to serve the needs of folk and traditional artists in Los Angeles County, the most diverse community in the nation, and to share these traditions with the public.



Ney Nava Dance Theatre performs authentic Persian dances.

This program provides support, develops activities and acts as a resource for artists and organizations throughout the county. It also supplies linkages to an emerging statewide network of artists and administrators forming under the banner *Alliance for California Traditional Arts*. The program connects folk artists with resources through gatherings, workshops, mentorships, an e-mail listserv and funding opportunities.

Current projects include a countywide database created to connect folk and traditional artists with presenters and researchers, and technical assistance specifically geared to these artists.

The program is funded in part by The Fund for Folk Culture and the Alliance for California Traditional Arts (ACTA).

What are Folk and Traditional Arts?

Folk and traditional arts deeply reflect cultural heritage and can express a community's sense of identity or way of life. They are passed down through the generations within a family or community that share a common ethnic heritage, language, religion, occupation or region. Folk art can be music, dance, visual arts and crafts, storytelling, and cuisine.

Some folk and traditional arts have been brought to California from other countries, taken root here and become woven into the state's cultural identity, while others have prospered within indigenous tribes for centuries.

Folk art is...Mexican mariachi music, West African hair braiding, Balinese gamelan, Western saddle making, Chinese opera, African-American gospel quartets, Hawaiian hula, Hmong embroidery, Anglo-American old-time fiddling, Native American basketry, Cuban *bata* drumming, Swedish rosemaling, Japanese tea ceremonies, Mennonite quilting, South Indian *bharata natyam* dance...the list is as long as our region is diverse.

To subscribe to the Los Angeles County Folk Arts listserv, send an e-mail to:

[LAFolkArts-subscribe@yahoogroups.com](mailto:LA FolkArts-subscribe@yahoogroups.com)



Since 1947



Los Angeles County
Arts Commission
374 Kenneth Hahn Hall of Administration
500 West Temple Street
Los Angeles, CA 90012
Tel 213.974.1343
Fax 213.625.1765
www.lacountyarts.org

