



LOS ANGELES COUNTY  
DEPARTMENT OF ARTS AND CULTURE

# CIVIC ART DIVISION

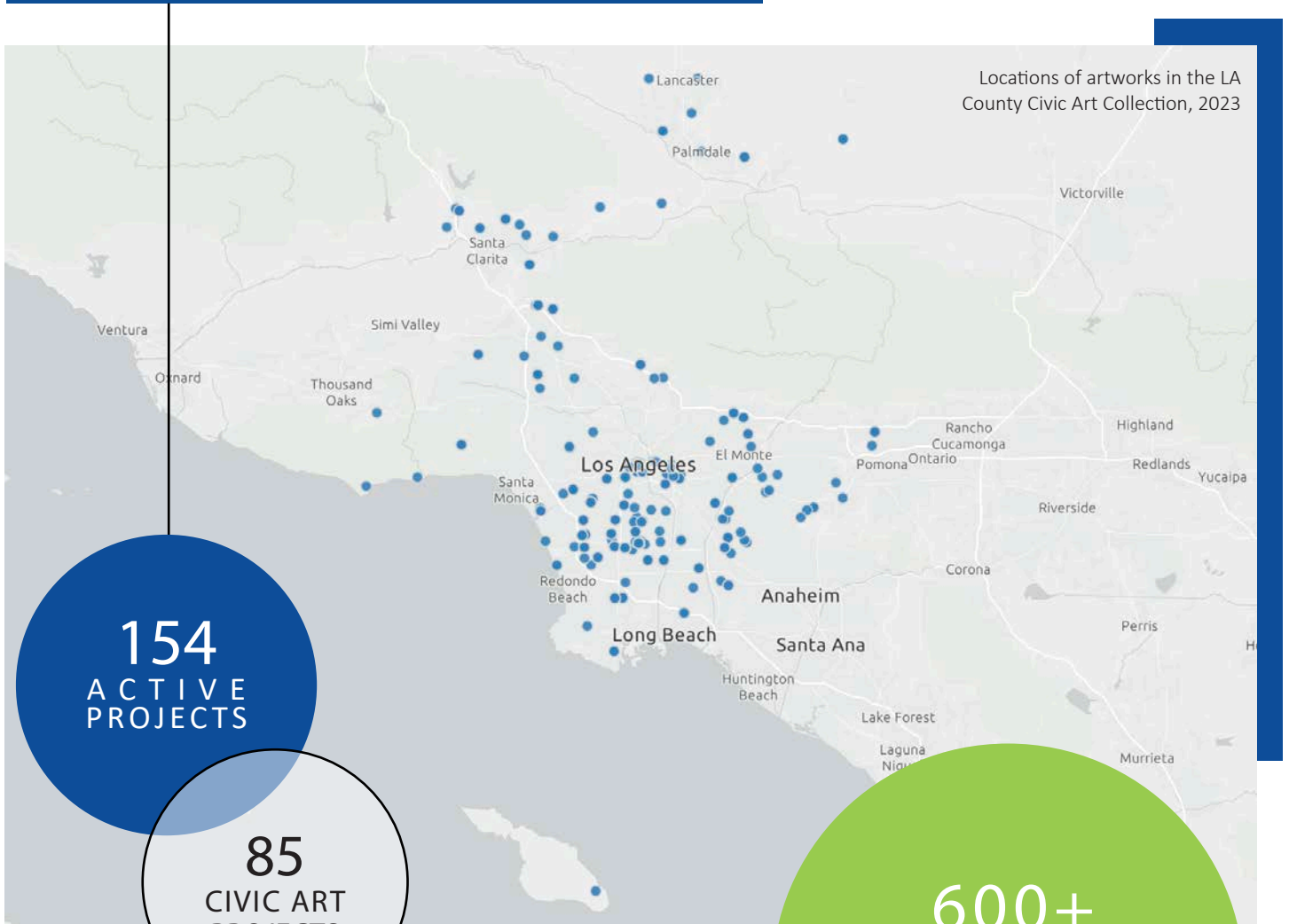
FY 2022 - 2023 ANNUAL REPORT

# CONTENTS

<b>PROJECTS SUMMARY</b>	3
<b>YEAR IN REVIEW</b>	4
<b>PROJECT MANAGEMENT HIGHLIGHTS</b>	6
<b>SCOPING/PLANNING</b>	6
San Gabriel Valley Aquatic Center	8
Hall of Records – Regional Planning Office, 13th Floor	10
<b>SELECTION</b>	12
Sound Art – Parks Restroom Program	14
Art Consultant Prequalified List	15
<b>COMMUNITY ENGAGEMENT</b>	16
Nogales Park – Security Building	18
Hall of Records – Public Defender, 6th Floor Office	20
<b>DESIGN</b>	24
Harbor-UCLA Medical Center – Inpatient Lobby	27
Harbor-UCLA Medical Center – Central Green	29
<b>FABRICATION</b>	32
Hilda L. Solis Care First Village	34
Bassett Park Multipurpose Building Courtyard	37
<b>INSTALLATION</b>	38
Jacqueline Avant Children and Family Center	40
Greater Whittier Regional Aquatic Center	44
<b>COLLECTIONS MANAGEMENT</b>	48
Illuminate LA – Collective Memory Installation	50
Civic Art Demographics Study	52
Houdon (George Washington) Statue Relocation	55
<b>PUBLIC ARTISTS IN DEVELOPMENT PROGRAM</b>	56
<b>STAFF AND CONTRIBUTORS</b>	61
<b>PROJECT LISTS</b>	62

# CIVIC ART DIVISION

## FY 22-23 PROJECTS SUMMARY



**154**  
ACTIVE  
PROJECTS

**85**  
CIVIC ART  
PROJECTS

**44**  
COLLECTIONS  
PROJECTS

**25**  
INITIATIVES

**600+**  
ARTWORKS  
IN CIVIC ART  
COLLECTION

We worked with **152 arts professionals** including artists, conservators, and art consultants.

- 118 ARTISTS**
- 16 PANELISTS**
- 8 CONSERVATORS**
- 8 ART CONSULTANTS**
- 2 INSTALLERS**

# YEAR IN REVIEW



In 2004, the Los Angeles County Board of Supervisors adopted the County’s first Civic Art Policy, allocating one percent (1%) of design and construction costs of new County capital projects to a Civic Art Special Fund for the creation of civic artworks. The County’s Civic Art Policy is managed by the Department of Arts and Culture’s Civic Art Division, to commission socially engaged civic artworks, support conservation efforts, and manage artistic and cultural programs and services throughout the unincorporated areas of Los Angeles County in all five Supervisorial Districts.

---

**As we close out another year, knowing that our projects and opportunities bring joy and meaning to so many is comforting. Art has the power to shape our perspectives and elevate our experiences, even amid tremendous conflict and change.** It can challenge our assumptions and open us to new ways of understanding the world. It can inspire us to connect with one another across difficult divides to find common ground.

Art encourages us all to be braver because it takes great courage to be an artist — to live on the margins and dedicate one’s life to exploring an idea or feeling. Throughout history, the most avant-garde artists, once cast out from the academy or rejected by the status quo, are often the ones we admire and appreciate the most today. These artists are our seers and guides who help us gain clarity about where we are going — often, paradoxically, by challenging what we are seeing.

For a series of projects at LA County Public Defender’s new 6th floor office in the Hall of Records Building, the complexity of truly seeing and knowing a person or situation in their totality is a theme explored across much of the eight artists’ work. Ian Robertson-Salt, Kenturah Davis, and Abel Alejandro depict their subjects through a multi-perspective lens to complicate some of the reductive legal

frameworks and cultural narratives constraining us all. Elana Mann and Jody Zellen use mirrors and lenticular devices to trace the Department’s work historically and consider how its mission and vision of justice have shifted over time. Andrew Hem, Moses X Ball, and Sergio Teran use the symbolic and surreal in their artwork to explore the depths of character and personal fortitude shared among staff and clients that are not always readily apparent.

Sergio Teran’s artwork, included here, showcases an artist’s unique ability to capture and translate the essence of our experiences in ways we might not otherwise be able to see for ourselves. At first glance, everything about the artwork is not what you would expect to see for a project at Public Defender: the skeleton of a boat suspended on an ambiguous rooftop landscape in LA, not a body of water in sight on the horizon. But deeper engagement with the work reveals that Teran presents a metaphor for justice as a collaborative effort — where learning, labor, and a rehabilitation process empower individuals to transcend their seemingly impossible circumstances toward a brighter future. The boat is an ancient archetype of freedom and growth, and one that requires the investment of time, knowledge, and labor to become a reality.

But building that boat and navigating those brave waters also require that we have safe harbors to return to — a theme that many of the other projects highlighted in this report thoughtfully consider. These include three projects at San Gabriel Valley Aquatic Center, Nogales Park, and Greater Whittier Regional Aquatic Center, which will provide sorely needed spaces for rest and relaxation in park-poor communities across the County, as well as meditative spaces of escape essential for staff and patient wellness at the bustling Harbor-UCLA Medical Center.

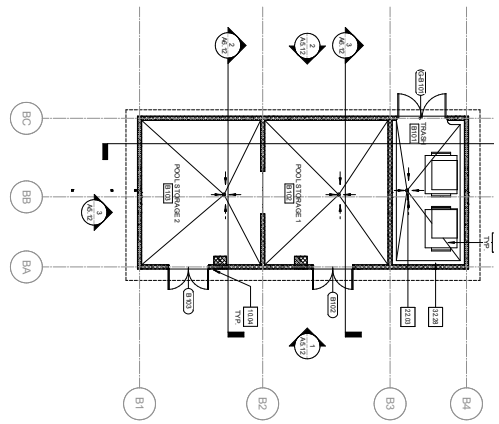
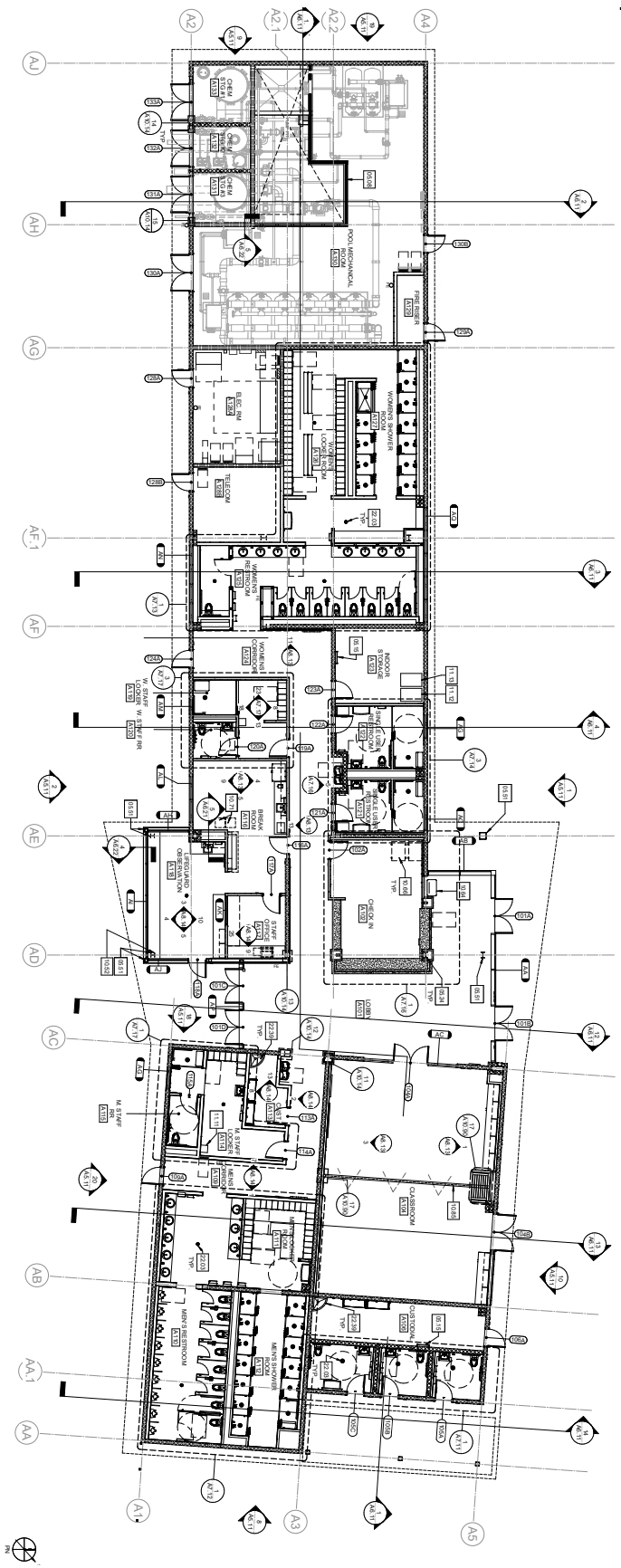
Safeguarding spaces for rest, reflection, and the enjoyment of art are revolutionary acts that are as vital now as ever before. We are grateful to our many program partners, colleagues, community members, and artists who understand this need and help us stay committed to the work.



# SCOPING / PLANNING

Project scoping and planning are the critical first stages of project management that set the tone and trajectory of success for each civic art project. Establishing an effective project plan involves tracking, documenting and determining a list of specific project goals, budgets, and timelines to adopt an agreement on the intended outcomes, while balancing a variety of stakeholder needs and perspectives. Meeting these objectives while striving to promote greater diversity, equity, and inclusion of underrepresented artists and communities poses unique questions and challenges specific to the context of each project site. The projects outlined across the following pages highlight some of the approaches the Civic Art team initiated during its scoping and planning phases.

**39** PROJECTS IN  
SCOPING / PLANNING



# SAN GABRIEL VALLEY AQUATIC CENTER



While the LA County Department of Parks and Recreation operates 30 aquatic facilities, many unincorporated communities in the east San Gabriel Valley still lack adequate access to aquatic facilities. During the time of racial desegregation, many public pools across the country closed rather than commit to integration.

This led to a surge in backyard pools, private club membership, and underinvestment in public facilities over time that has become an important equity issue whose impact is still experienced today. Acknowledging this past, the new San Gabriel Valley Aquatic Center will be a critical addition to the community and the first of its kind in the east San Gabriel Valley.

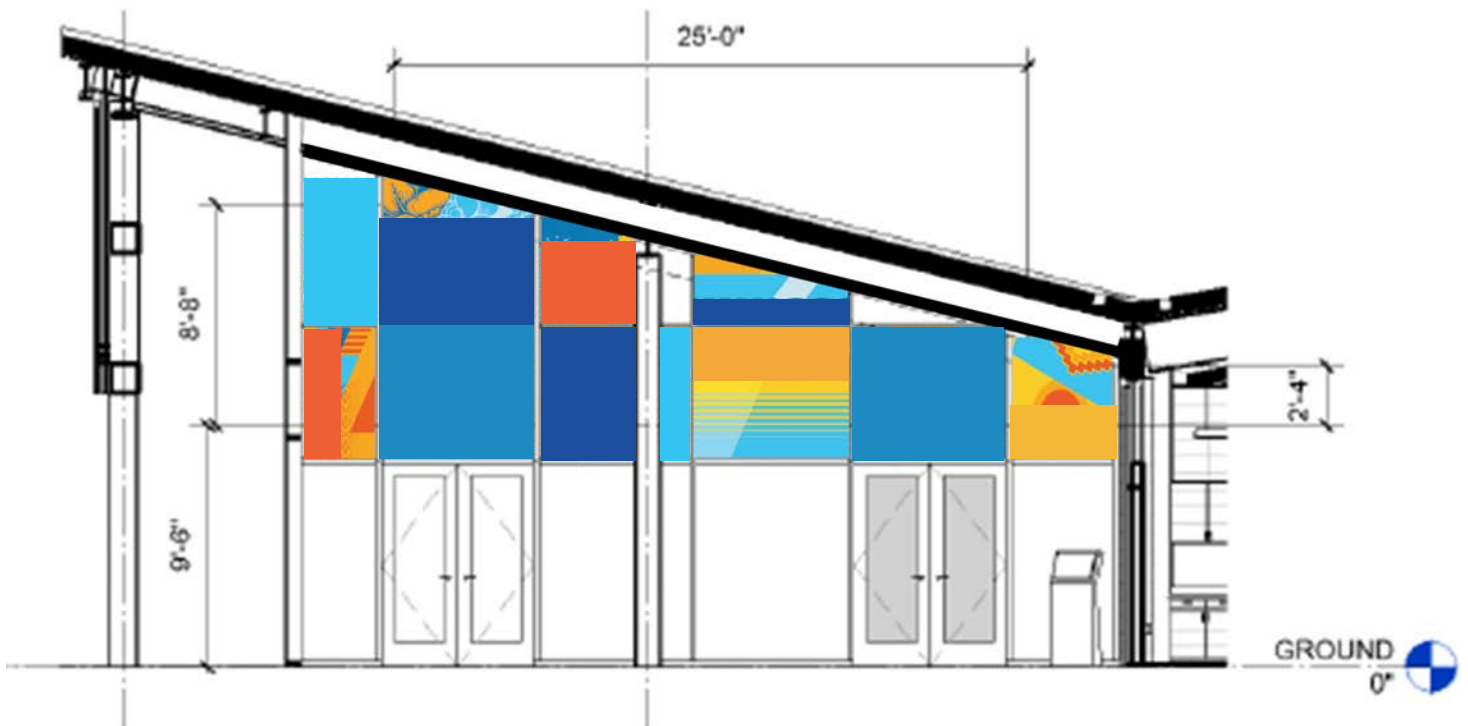
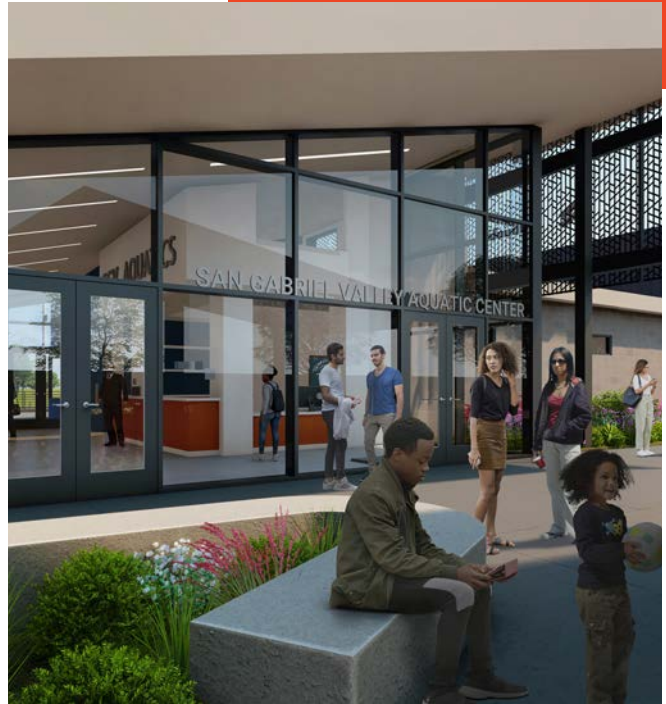
The Aquatic Center will consist of a pool building with offices, classrooms, an Olympic-size competitive swimming pool, a practice pool and other related amenities that will facilitate programming. Additional facilities surrounding the Aquatic Center will promote a family friendly wellness hub, including a parking lot, spectator bleachers, an electronic scoreboard, and an upcoming one-acre park with amenities. The new park will provide direct access to Allen J. Martin Park.



The commissioned artwork is intended to support the Aquatic Center site for the greatest number of visitors of all ages. It will reflect the following goals as described by community members in preliminary outreach efforts for the Aquatic Center:

- **Community Pride.** Make the campus a source of community pride and treat the facility and park as a whole.
- **Timeless.** Create a timeless artwork that celebrates the rich cultural history of the San Gabriel Valley.
- **Inclusive.** Create an inviting, colorful and unique environment.

In furthering the project’s mission of supporting equity, access, and inclusion, the Call for Artists solicitation process was intentionally promoted as an opportunity for artists with no previous experience in public art to apply. The artwork commission was sited for a two-dimensional glass opportunity in a prominent location at the visitor center. Glass as a material was selected to successfully translate many different styles of work, so artists with no prior experience in glass fabrication could have a low-barrier entry into the process.



This page: renderings of San Gabriel Valley Aquatic Center.

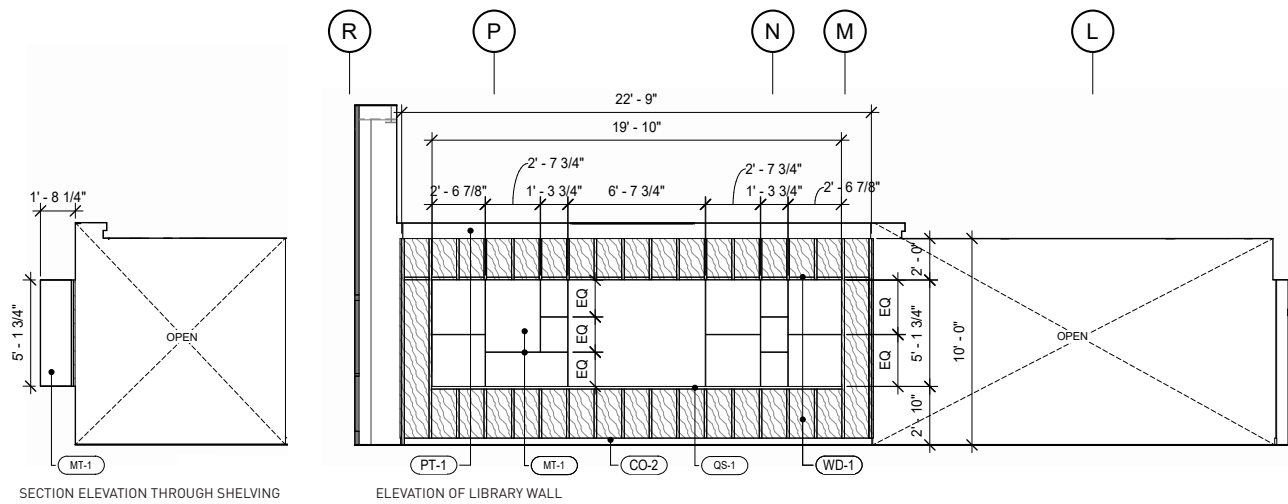
# HALL OF RECORDS – REGIONAL PLANNING OFFICE, 13TH FLOOR



The Department of Regional Planning (DRP) performs all land use planning functions for the unincorporated areas of Los Angeles County, spanning more than 2,600 square miles and represent two-thirds of the County’s land and one-tenth of its population.

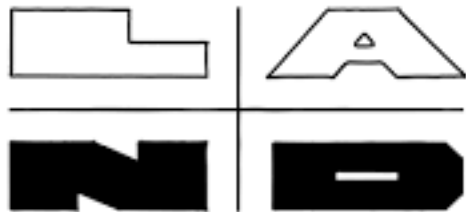
On the heels of its one hundredth anniversary, DRP has redesigned its headquarters on the 13th floor of the LA County Hall of Records, a fifteen-story example of mid-century modernist architecture. Richard Neutra and Robert Alexander originally designed the building in collaboration with sculptor Malcolm Leland, and it is eligible for State and National Historical Registries. The commissioned artwork will be prominently featured in the Flex Space, located at the core of the headquarters’ main lobby. The Flex Space will be used primarily by Regional Planning staff, but other County departments’ staff and the general public will be invited for general meetings and special events. The commissioned artwork is intended to embrace both the historical legacy and current mission of DRP as well as celebrate the diversity of past and present communities of Los Angeles County.

This page and next: rendering and architectural plan of Department of Regional Planning Flex Space.



The goals for the civic art project include:

- **Community Pride.** Celebrate the cultures and histories of Los Angeles County communities.
- **Geography.** Reflect Los Angeles County's diverse geography.
- **Historical Legacy.** Capture the spirit and history of regional planning in LA County as it celebrates the 100th anniversary of the founding of the Department.
- **Appropriateness to Site.** Align with the architectural intentions of the building and the renovation.
- **Welcome and Wellness.** Create a welcoming space and supportive atmosphere for employees and visitors.



The Los Angeles Nomadic Division (LAND) was selected as the art consultant to manage the project under Civic Art Division's guidance based on their in-depth understanding of DRP, their commitment to community engagement, and longstanding expertise in delivering exemplary site-responsive projects in the public sphere.

# ARTIST SELECTION

After the key parameters of a project opportunity are established, the Civic Art Division spends up to six months developing a process and plan that lead to an artist(s) project commission award. This involves conducting artist outreach and studio visits, hosting artist information meetings, releasing a Call for Artists, and hosting selection panel meetings. Throughout these steps, we strive to create projects that center community perspectives and give opportunities for more underrepresented artists to participate. The following pages showcase strategies implemented over the past fiscal year to meet these goals, including working with art consultants to expand our reach.

13 PROJECTS IN ARTIST SELECTION



on Av

DREAM BIG

2100 S

Edwards PAINTS  
dnpaint.com  
1800 DE PAINT  
13

How do  
et more e

SchoolsNotPrisons  
STONE  
USA

# SOUND ART – PARKS RESTROOM PROGRAM

Scoping / Planning

Artist Selection

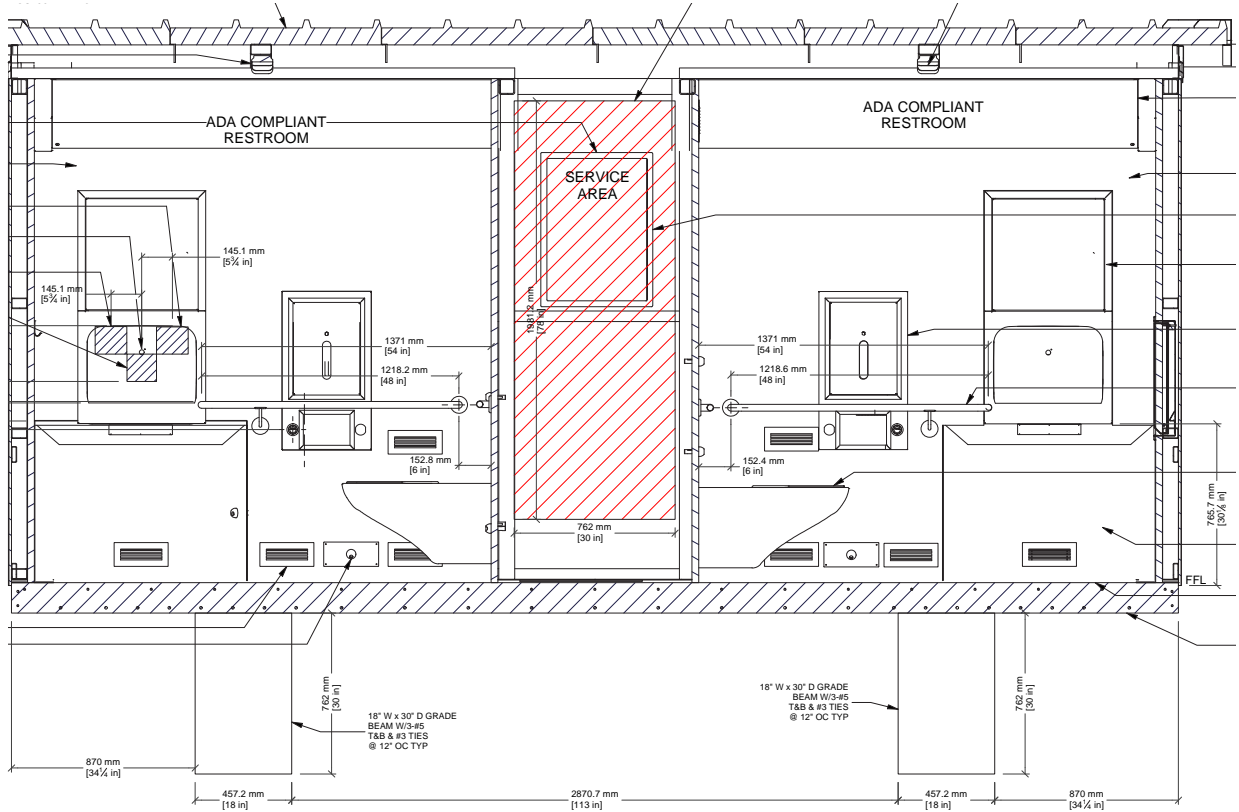
Community Engagement

Design

Fabrication

Installation

Collections



The Civic Art Division has developed an innovative sound art project in collaboration with Parks and Recreation at sites in the First and Second Districts. The sound art will be created specifically for the restroom areas of Atlantic Avenue Park and Athens Park and is part of Parks and Recreation’s renovations at the sites, which include new automated self-cleaning restrooms.

Label Curatorial was selected to lead the project and will actively engage the community in the artist selection process by soliciting feedback through community conversations and surveys about listener preferences and concerns. Label Curatorial has a strong history of collaborating with cutting-edge avant-garde musical artists, encouraging the expansion of innovative auditory experiences. Label Curatorial will help lead community members through the selection of artists who can bridge a multiplicity of styles to create compelling sound art that everyone can enjoy.

# ART CONSULTANT PREQUALIFIED LIST

To support the steady increase in projects the Civic Art Division manages each year, we have created a prequalified list of art consultants experienced in the areas of project management, community engagement and programming, and curatorial services.

Work orders for specific projects are distributed to the consultants, who then elect to apply or bid for the specific project. This approach has led to an array of new and exciting civic art projects and benefits for the field, including:

- **Expanded art opportunities.** Due to limited staff capacity, project funding below a certain threshold dollar amount was commonly “pooled” into larger budgets. However, by contracting consultants to manage smaller budgets, more opportunities are created for a wider range of artists and arts professionals. This, in turn, has led to greater versatility in project types and artwork mediums commissioned, leading to a more diverse and dynamic Civic Art Collection.
- **Increased accessibility.** Art consultants managing smaller budget projects have flexibility to subcontract with artists with less public art experience, expanding accessibility and providing artists with experience to compete for future commissions.
- **Streamlined solicitation process.** Creating an extensive list of prescreened consultants minimizes or eliminates many lengthy administrative steps in hosting selection panels.
- **Expanded artist networks.** Working with art consultants also supports the Civic Art Division’s broader outreach goals by bringing new artist networks into the fold and introducing the Division to different creative approaches to the outreach and selection process.



Art supplies at artist Kenturah Davis’ studio.

# COMMUNITY ENGAGEMENT

A key factor in selecting an artist or artist team for a project commission is the community engagement component of their proposed project plan. While each artist is free to explore this process differently, the Civic Art team encourages the integration of local perspectives into the design plan at the earliest stage of the process, so that completed artworks reflect a deep connection to the existing culture and neighborhood identity of the area in which they are placed. Successful community engagement often also involves working closely with staff and clients who frequent the space where the artwork will reside, contributing to a sense of shared identity and mission alignment.

Scoping / Planning

Artist Selection

Community Engagement

Design

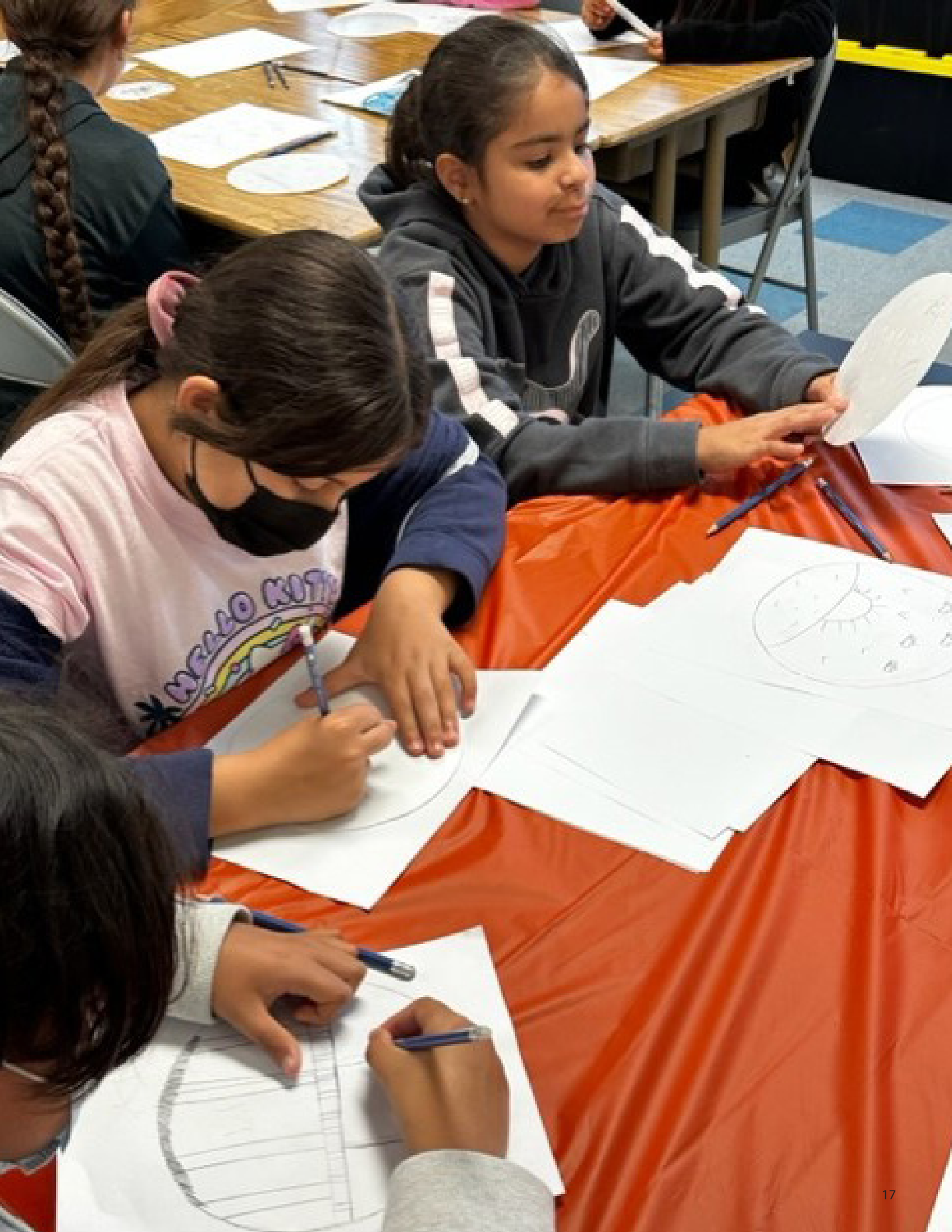
Fabrication

Installation

Collections

6 PROJECTS IN  
ENGAGEMENT





# NOGALES PARK – SECURITY BUILDING

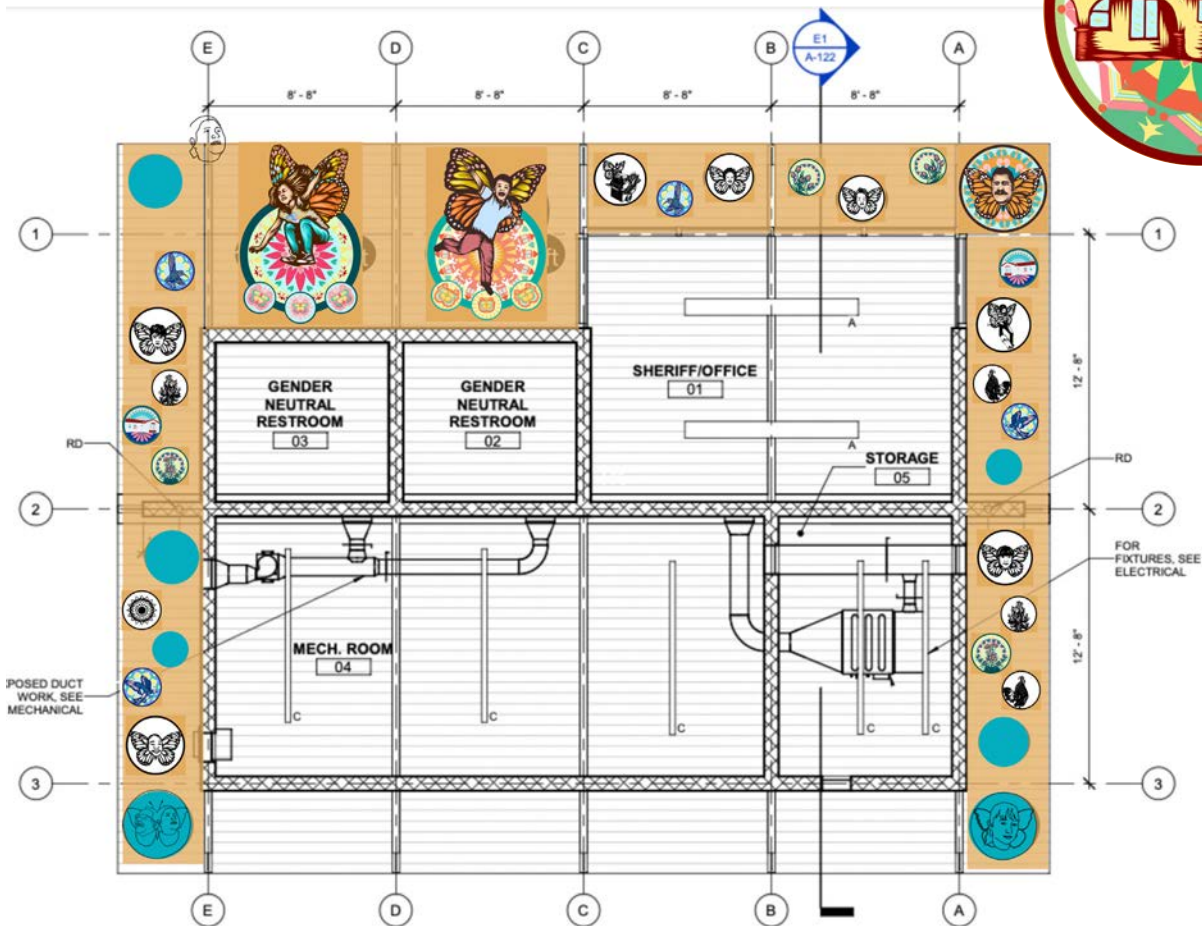


According to the 2016 Los Angeles County Comprehensive Parks and Recreation Needs Assessment, the unincorporated Nogales Park (formerly Walnut Park) is categorized as “Very High Need.” The California State Parks Community Fact Finder additionally characterizes the community as one of the most park-poor areas of the County, with only 0.1 acres of local parkland per 1,000 people — significantly below the Countywide average of 3.3 acres of parkland per 1,000 people.

After years of community engagement and planning, Parks and Recreation acquired the Nogales Park property in the summer of 2019. Over 7,500 residents were engaged in developing the park’s conceptual design and furthering its mission of improving access to safe parks in the area.

Previous page: Walnut Park students participating in community engagement activities led by Kalli Arte Collective. This page: Nogales Park architectural rendering. Next page: community engagement materials for the Nogales Park project.

Selected artist Kalli Arte Collective hosted two printmaking workshops for fourth grade students at Walnut Park Elementary to develop the designs for an artwork on the underside of the security building roof overhang at the site. The group worked with approximately 80 students over two 70-minute sessions to teach them about mono-printing techniques and help them develop their visual language related to themes such as connection to nature, friends, family, and sports. Kalli Arte Collective further developed the student artworks into a series of distinct icons and presented them to the community's Civic Engagement Project leadership, park management, and neighbors who live adjacent to the park for feedback and final approval. Art consultant Susan Gray is managing the project with the Civic Art Division.



# HALL OF RECORDS – PUBLIC DEFENDER OFFICE, 6TH FLOOR



The law offices of the Los Angeles County Public Defender recently retrofitted their space in the historic Los Angeles County Hall of Records building. As part of a Civic Art project, artists Abel Alejandro, Moses X Ball, Kenturah Davis, Andrew Hem, Elana Mann, Sergio Teran, Ian Robertson-Salt, and Jody Zellen were selected to create site-specific artworks for the entry and various office space locations.

Community engagement for the project was multifaceted and specific to each artist’s project. Artists conducted formal and informal staff and client interviews, archival research about the department’s history, and job shadowing of public defenders at County courthouses to better understand the nuances of the legal system for all individuals involved. Two of these artist projects are highlighted below.

This page: *A Man in Plain Sight* by Abel Alejandro. Next page: Abel Alejandro working in his studio.

## A MAN IN PLAIN SIGHT

Throughout his work, artist Abel Alejandro explores the concept of masculinity in both the public and private spheres, focusing on the average man as his central theme. For his project, Alejandro participated in conversations with staff to learn about their motivations for their work. He also spent an afternoon shadowing one of the department's lawyers, observing courthouse proceedings and the interactions between staff and clients up close.

*A Man in Plain Sight* depicts the journey of an ordinary person transitioning through the legal system, a situation that often invites unfair and oversimplified judgement from others. Alejandro aims to capture this man in multiple contexts, including on the streets, in the legal system, and at home, representing the typical individual served by the Los Angeles County Public Defender's Office. By portraying the subject from various perspectives, the artwork disrupts one-sided narratives about how someone might be understood, emphasizing that no one should be defined solely by their past actions or circumstances. The artwork suggests that everyone encompasses multiple identities and that, with the help of the right advocate, others can come to appreciate and recognize the complexities that make us all unique.



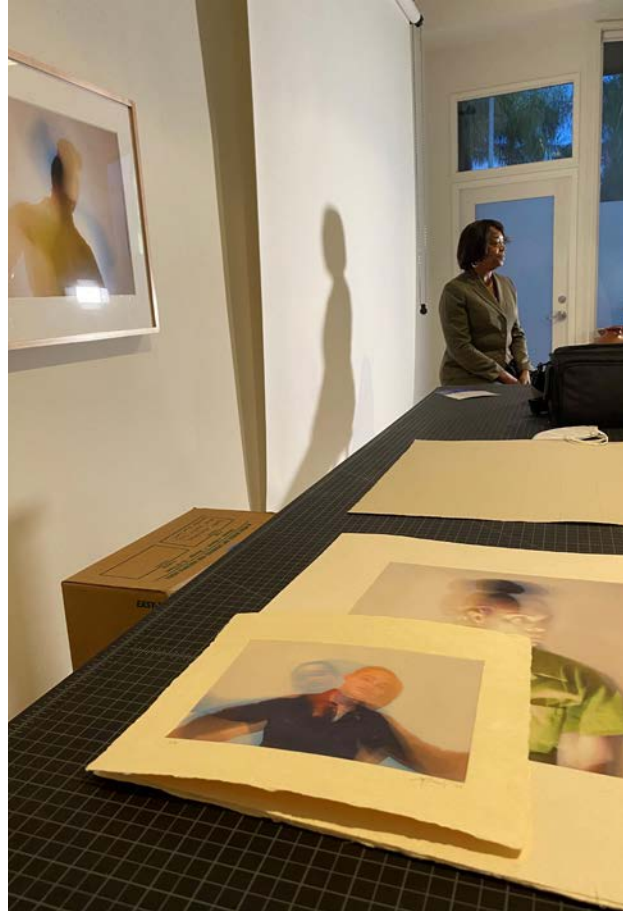
## EXCERPT OF CONTINGENCY — ANGELA DAVIS II (DOMINIQUE)

Kenturah Davis' art practice often centers on the representation of Black women in society. It explores the relationship between identity, language, and figurative mark-making. For this project, she chose to highlight the contributions of Black women at the Department of Public Defender, selecting three staff members as subjects for possible inclusion in the artwork.

In October 2022, these women were invited to the artist's studio in Altadena to be photographed, with one photograph of Deputy Public Defender Dominique Brown selected to be translated into a drawing on paper for the artwork commission. All three women received photographic prints for their time and participation. The drawing of Dominique Brown was then rubbed with carbon pigment over a collage of text, which consists of writings by Angela Davis, choreographer/anthropologist Katherine Dunham, and logician Jonathan Chimakonam, to create an embossed effect. Viewers can experience multiple dynamics at play in the artwork. From a distance, it presents a gestural movement of the Black female figure. Up close, the image dissolves to reveal the subtlety of the inlaid text.

The piece is part of a larger body of work that investigates how the language inscribed in our society in the form of laws and cultural norms functions as a choreography for how we exist and move through the world. The legal system, in particular, exemplifies a body of text that strives to organize our collective and individual movements literally and figuratively. The artist explores how we, as actors in society, negotiate that choreography — conforming, resisting, and improvising — in the pursuit of justice and freedom.

This page: artwork from Kenturah Davis' studio. Next page: *Excerpt of Contingency — Angela Davis II (Dominique)* by Kenturah Davis.





# DESIGN

An artwork’s design process can span many months, from a preliminary “napkin sketch” or image representing the artist’s initial vision for the space, to a more developed design incorporating community perspectives and stakeholder engagement, to a final design that accommodates all structural technicalities of the space. The following pages showcase two artists’ innovative approaches to delivering exceptional designs which excel in the areas of community engagement, site specificity, originality, and maximization of project budgets.

2 PROJECTS IN  
DESIGN

Scoping / Planning

Artist Selection

Community Engagement

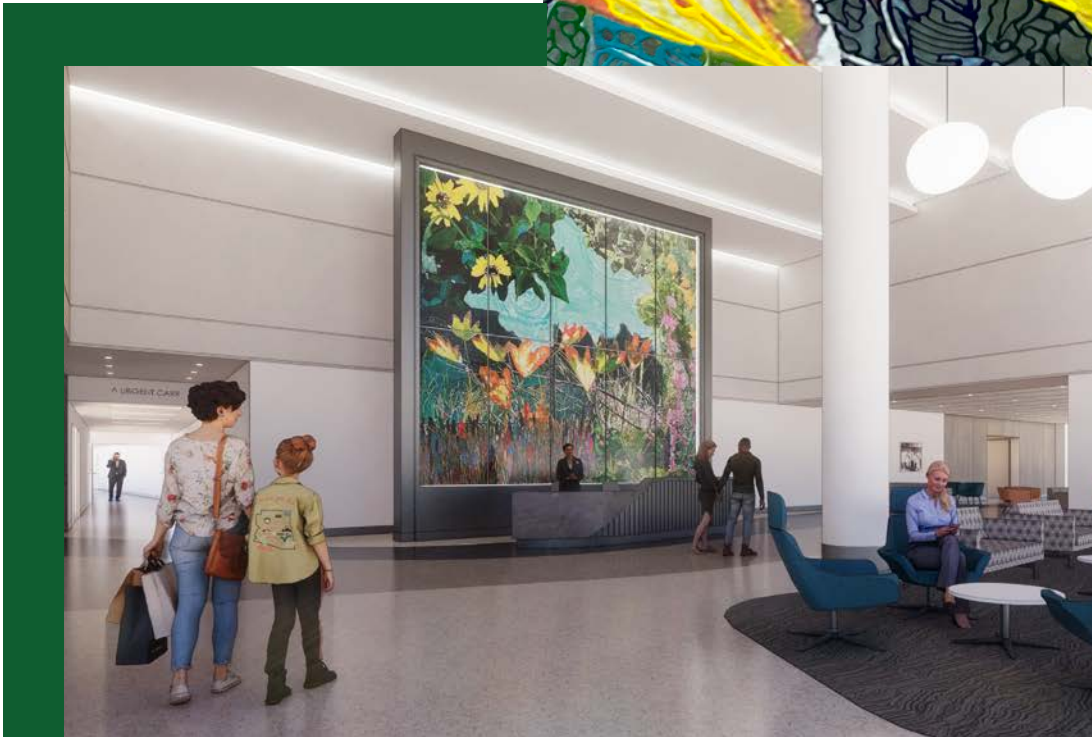
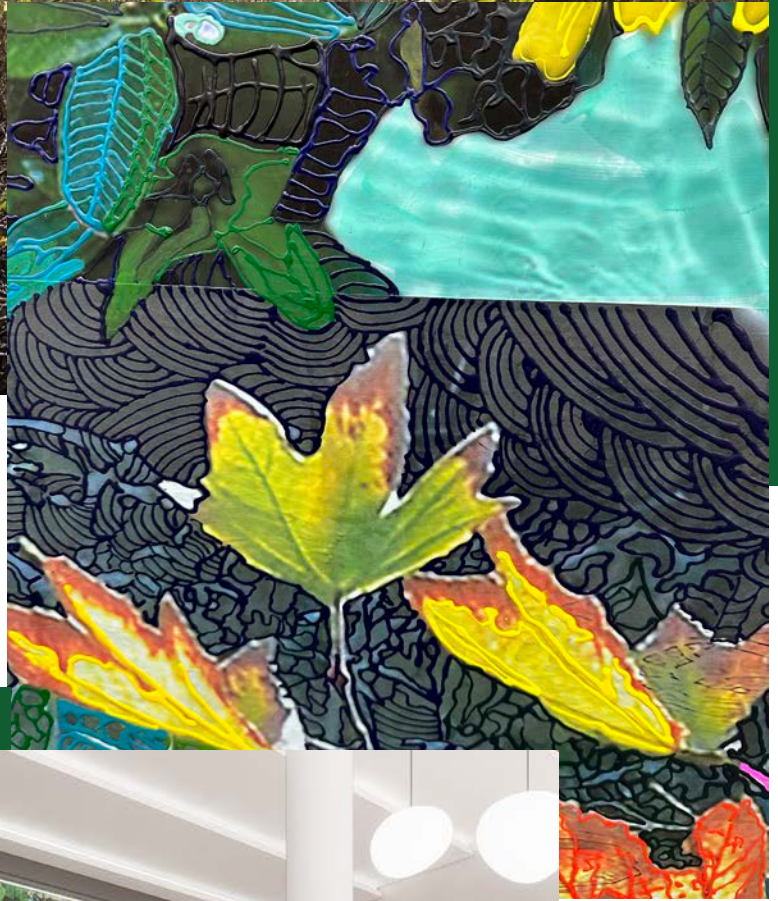
Design

Fabrication

Installation

Collections





# HARBOR-UCLA MEDICAL CENTER — INPATIENT LOBBY AND CENTRAL GREEN



The Harbor-UCLA Medical Center is undergoing a considerable renovation that will include new Inpatient and Outpatient buildings, support buildings, green spaces, a parking structure, and parking lots. The new campus is scheduled to be completed in 2027.

---

Harbor-UCLA is a public teaching hospital that is one of two Level 1 trauma centers in the County. Its patients are among the County's most underserved. In July 2022, the selection committee awarded commissions to artists Jaime Scholnick and Benjamin Ball/Ball-Nogues Studio for the two civic art projects on the campus.

# MARSHLANDS

Jaime Scholnick will create a large-scale, paneled glass artwork, *Marshlands*, for the lobby of the hospital's new Inpatient building.



**During the project's scoping phase, Scholnick spoke to nurses and other staff,** who implored her to design an artwork that would provide a meditative moment for staff and patients and a peaceful escape in an otherwise highly stressful setting. Scholnick was also struck by the stark urban environment of strip malls and fast-food restaurants surrounding the hospital.



**In her explorations of the neighborhood, Scholnick discovered the Bixby Marshland,** a 17-acre park located in Carson less than two miles from the hospital, and it inspired her design. The marsh was fully restored by the Sanitation Districts and reopened to the public in 2009, but it remains largely unknown to many local residents. Sometimes referred to as “the kidneys of the landscape,” these marshlands fulfill the vital ecological function of filtering sediments and pollutants from water runoff before the water slowly reenters the ocean and underground aquifers. Scholnick’s project has initiated meaningful conversations between Sanitation Districts staff, community members, and Harbor-UCLA representatives about activating the space over time through ongoing community engagement workshops and events.

Community engagement at Bixby Marshland led by Jaime Scholnick. Photos by Paul McCarty.

Scoping / Planning  
Artist Selection  
Community Engagement  
Design

Fabrication  
Installation  
Collections

## CHORUS FOR THE SKY

Benjamin Ball's artwork will consist of a large-scale sculptural glass artwork sited on the medical campus's new central green space located between the Inpatient and Outpatient buildings.



### ***Chorus for the Sky* was designed to resemble an abstract ship's mast and sail**

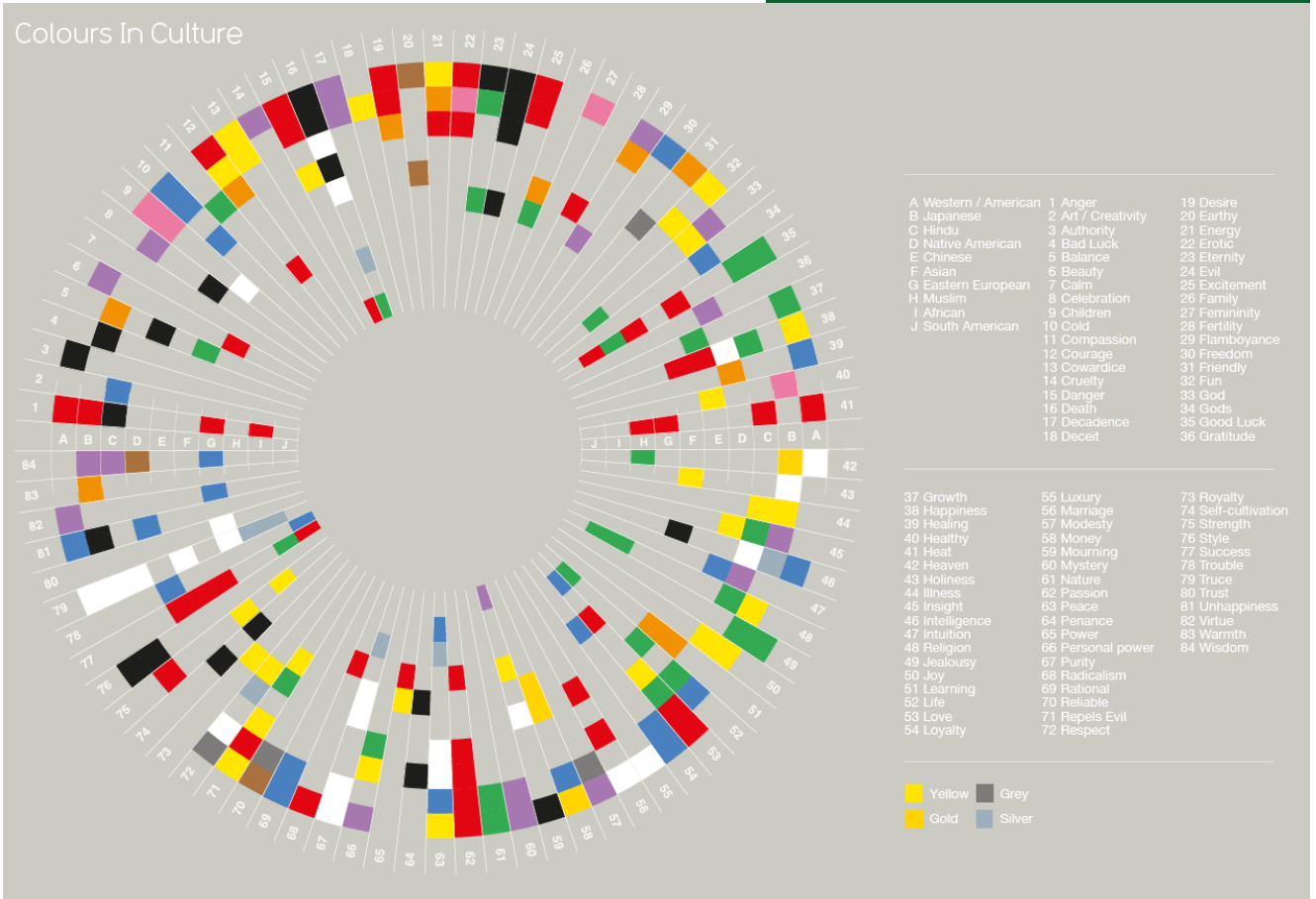
and is composed of small discs of colored glass. The sculpture will filter sunlight, providing shade and a colorful, patterned reflection on the ground. It will also offer a significant focal point and gathering space for clients, visitors, and staff. The artwork encourages organic interactions and restorative activities such as meditation, performances, and play. The artist developed a community engagement plan with Cynthia Gonzalez, the artist's community engagement coordinator, to engage the community about the project and solicit feedback about the design. A survey was distributed to residents and community members to gather data that will inform the color palette for the sculpture's final design.

Scoping / Planning

Artist Selection

Community Engagement

Design



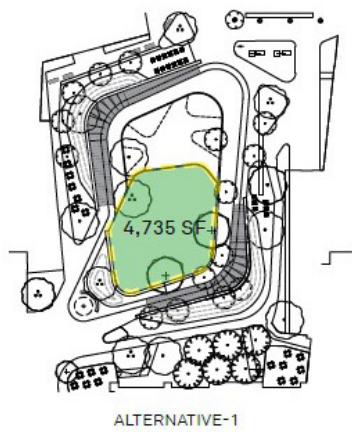
Fabrication

Installation

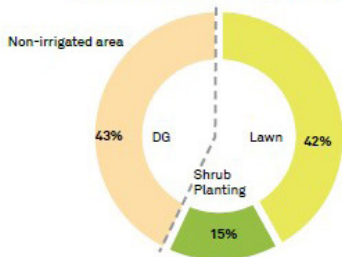
Collections



**Fascinated by systems of structure, computation, and color,** Ball-Nogues Studio aims to create a system of color, or chorus, for the artwork that acknowledges the myriad different cultural meanings and perspectives embedded in the language of color. The final color palette for the transparent cells of the artwork will be informed by feedback from community members and hospital stakeholders that was collected through surveys and presentations about the project. Individual colors representing different voices will then be arranged by the artist to form a harmonious chorus of color in the sky.



OVERALL LAWN SF REDUCTION - 36%



STUDIO-MLA



Scoping / Planning

Artist Selection

Community Engagement

Design

Fabrication

Installation

Collections

# FABRICATION

Artwork fabrication involves the translation of an artist’s design into physical “hard” art. This process often produces large and technically complex artworks. Because of the scale and durability requirements of most civic art projects, which are often situated in heavily populated areas and have an expected lifespan of 25 years, the materials and resources needed to fabricate an artwork are usually beyond the scope of an artist’s existing studio-practice skill set. Commissioned artists will often work with additional fabricators to bring the artist’s design to life. At other times, seemingly simple and traditional artmaking techniques are employed for meaningful impact.

5 PROJECTS IN FABRICATION





# HILDA L. SOLIS CARE FIRST VILLAGE

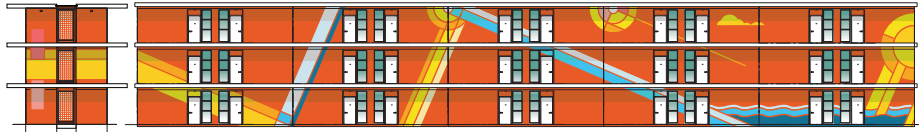


The Hilda L. Solis Care First Village is a temporary housing facility built on a four acre brownfield site near downtown Los Angeles.

The 60,500 square-foot complex is designed to serve individuals experiencing homelessness and consists of 232 individual units, kitchen and dining areas, laundry facilities, a dog park, administrative spaces for staff, and landscaped courtyards. The project was constructed in less than five months using prefabricated modular units and was opened in May 2021. The project was initiated after Supervisor Solis canceled the construction of a new Men’s Central Jail and decided to replace it with much needed housing during the pandemic.

This page and next: design plans and fabrication of artwork by 3B Collective for Hilda L. Solis Care First Village.

EAST FACING NORTH FACING



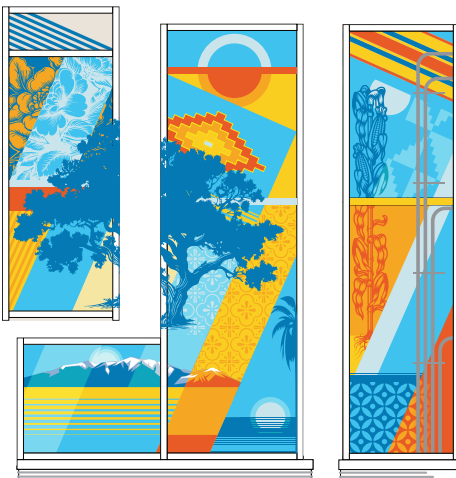
WEST FACING SOUTH FACING



DEPENDABLE  
 DYNAMIC  
 DELIGHT  
 DELIVER  
 DIGNITY  
 DIVERSE  
 DEVOTED  
 DISCOVER  
 DEDICATE  
 DELVE  
 DIVERSE  
 DISCOVER  
 DISTINGUISH



WEST FACING



SOUTH FACING

EAST FACING

-5-

To give the campus a sense of colorful cohesion, artist team 3B Collective was selected to develop a series of murals for the site. The artists created a system of geometric forms and graphic patterns based on various natural elements found in Southern California. The graphics were designed digitally and rendered into vinyl stencils which the artists then used to paint the murals by hand.

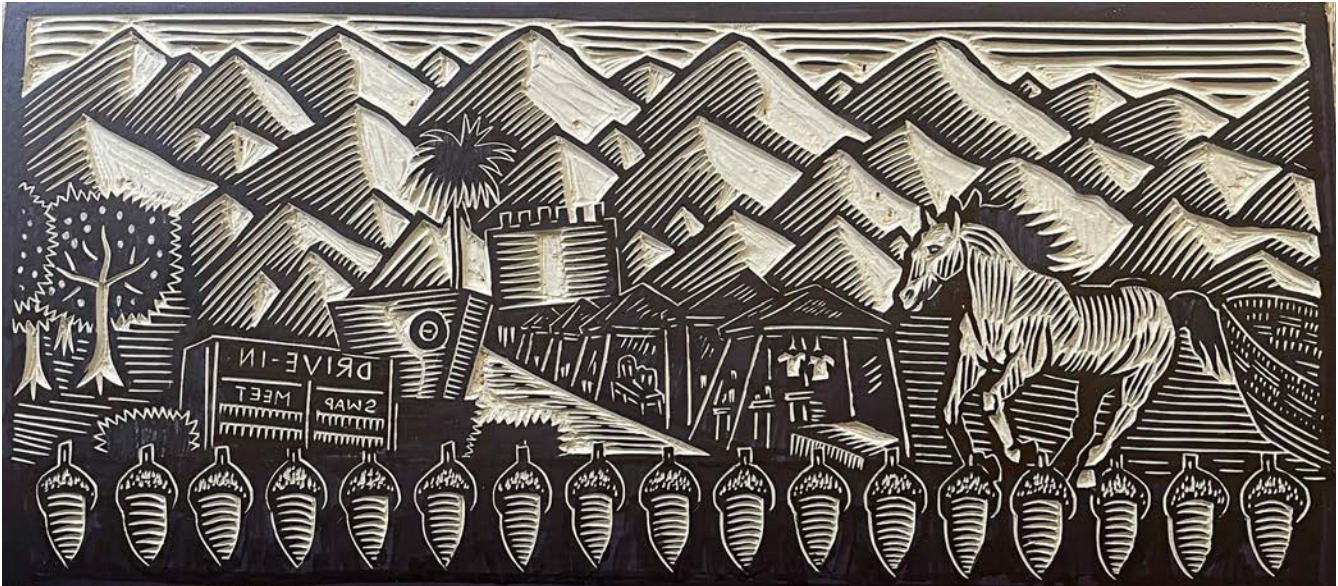


**3B Collective** is a Los Angeles-based group of six artists and designers dedicated to providing an inclusive platform that encourages pride and recognition of the different facets that make a community unique.

“As children of first-generation immigrant parents, we appreciated the storytelling and educational aspects that murals in our communities provided. In reaction to the erasure and destruction of these murals, we came together to create permanent artworks that can continue to honor a community’s history, the tradition of murals, and to help educate those unfamiliar with these histories. These projects work to create a sense of belonging, along with promoting the role that public works play in placemaking for those in the communities in which they are installed.” — 3B Collective



# BASSETT PARK MULTIPURPOSE BUILDING COURTYARD



The Bassett Park Multipurpose Building Courtyard is located in La Puente, a city in the eastern region of Los Angeles County. The area was originally inhabited by the Tongva peoples and was once known as Awing-na (or Ahwiinga). Over time, the region became known for its citrus, walnut, and avocado crops, as well as its growing industrial development in oil, banking, and communications. After World War II, the area underwent a building boom that transformed it into a mostly residential region and led to the displacement of crops.

---

As part of the Department of Parks and Recreation’s renovation of the park, artist Álvaro D. Márquez was selected to create artwork for the walls of the interior courtyard of the Bassett Park Multipurpose Building. Márquez’s art practice focuses on exploring histories of displacement in the Americas and the commodification of land as private property. His artwork for this project includes three linocut designs that reflect the agricultural history of the La Puente area in three distinct but related images.

Linocut is a printmaking technique that involves carving a design into a linoleum sheet using a sharp chisel or gouge. This creates a relief or raised surface that can be inked with a roller, also known as a brayer, and used to print images onto paper or fabric. The actual printing can be done by hand or with a printing press. The artwork created using this technique will be installed in 2024.

Scoping / Planning

Artist Selection

Community Engagement

Design

Fabrication

Installation

Collections

# INSTALLATION

In the final stage of Civic Art project management, installation of the fabricated artwork can present its own set of challenges. The site-specific nature of permanent artworks means that installation must be carefully coordinated within larger construction management schedules and facility needs and is often accompanied by unforeseen delays. When the project manager conducts the final installation review and the artwork is accepted, it represents the triumphant conclusion of years of coordinated efforts, careful planning, and problem-solving among Civic Art staff and our colleagues across numerous departments. Two completed projects are highlighted across the following pages.

2 PROJECTS IN  
INSTALLATION



# JACQUELINE AVANT CHILDREN AND FAMILY CENTER



The Jacqueline Avant Children and Family Center, formerly the MLK Child and Family Well-being Center, is more than just a building. It's a symbol of hope, care, and community. The Center houses the Departments of Mental Health, Public Health, Health Services, and Children and Family Services.

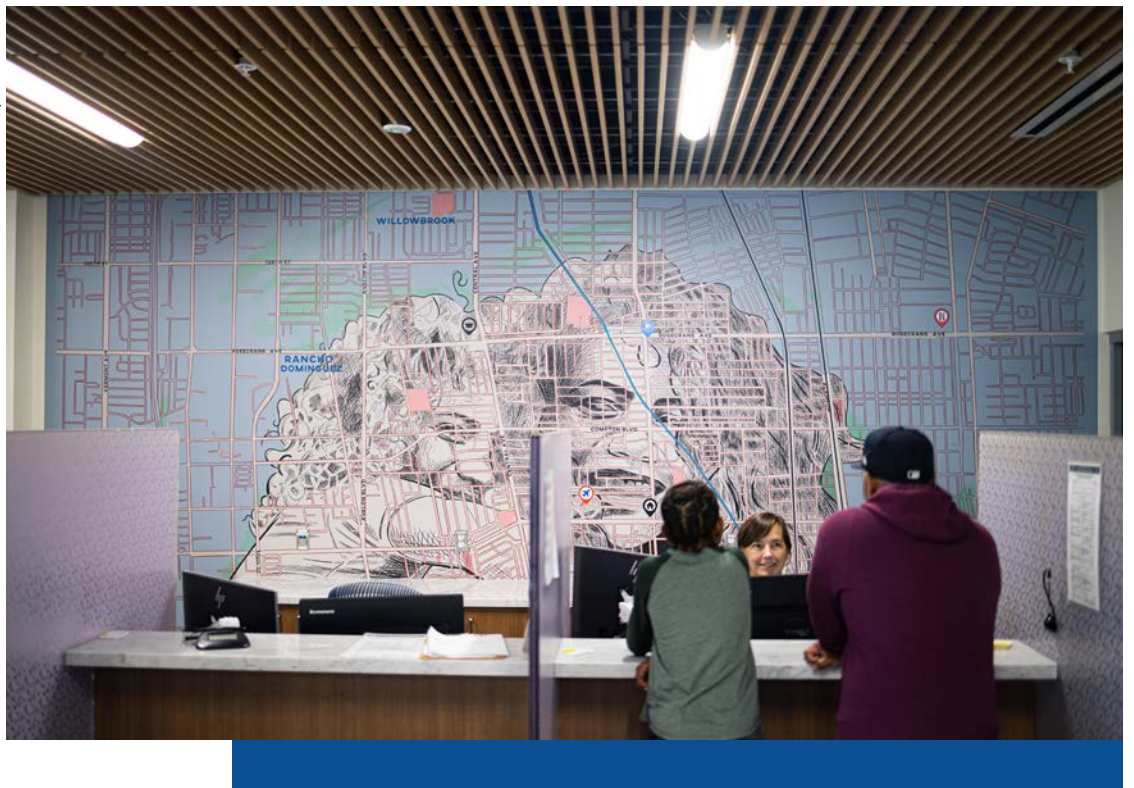
The artist team 120 Gallery, with artist Floyd Strickland and studio manager Mitchell Zenarosa, created a series of paintings and customized wall paper for the atrium in the main lobby, and a wallpaper mural behind the reception desk, and designed two screens for the exterior façade. Each design was informed by an extensive community engagement process that involved the artist and the neighboring King Drew Magnet High School, where the artist was once a student. The Center stands as a testament to the power of collaboration, creativity, and care for the community.

Previous page: *The Dreamers* by Floyd Strickland for Jacqueline Avant Children and Family Center. Photos by Irina Logra.



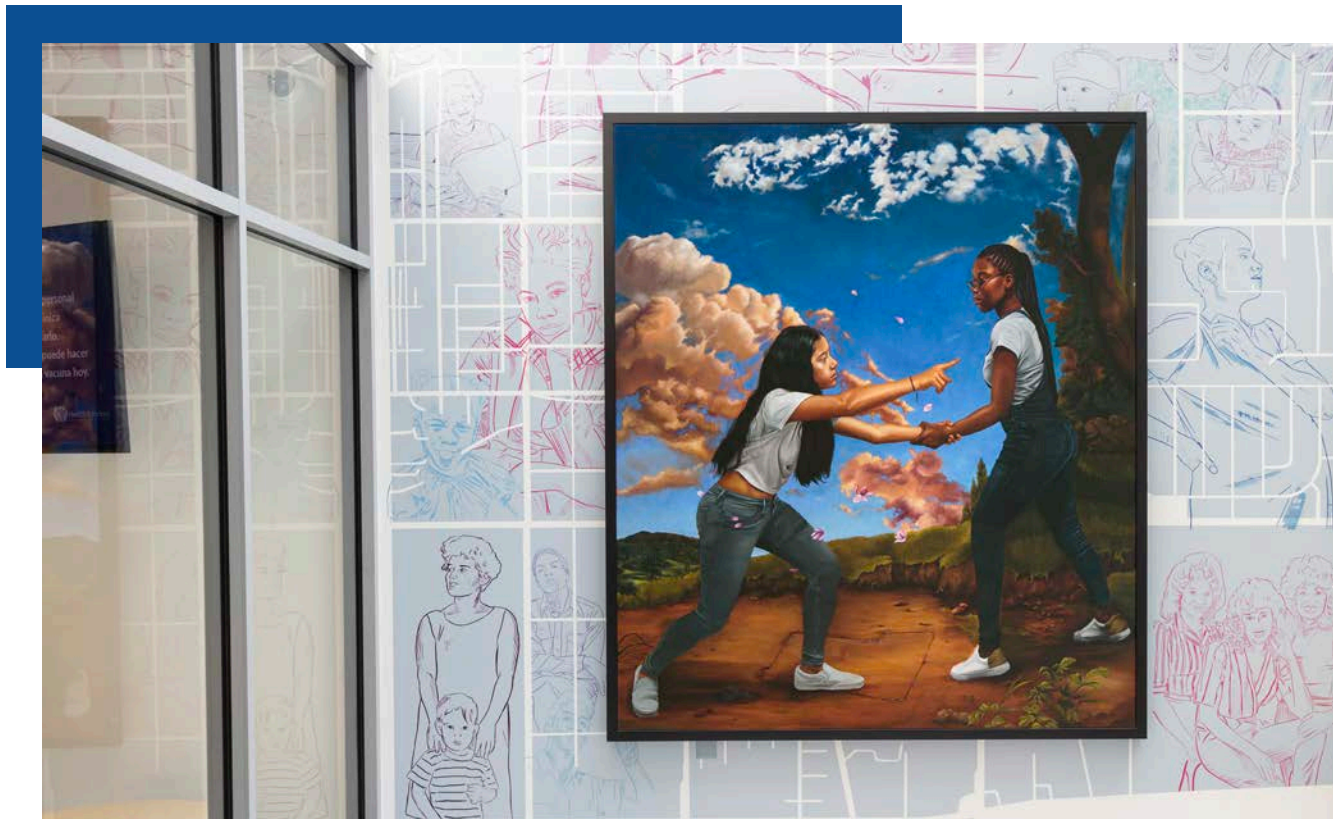


**Rooted** is a custom wallpaper artwork created for the reception desk area that depicts a mother and child intertwined with a map of the surrounding area.



## LOBBY PAINTINGS

The customized wallpaper depicts maps of the surrounding Willowbrook neighborhood with superimposed portraits of generations of its beloved residents. The three paintings — *The Dreamers*, *The Believers*, and *The Teacher* — depict neighborhood residents.



**The Believers** symbolizes unity, strength, and community. Because of the area’s demographics shift, the artist wanted to depict an image of unity and togetherness while also showing the central importance of young women in creating and sustaining flourishing communities.

**The Dreamers** depicts the spirit of Martin Luther King, Jr.’s “dream” for America and presents a new generation of children who have the potential to expand on his hope for equality.



**The Teacher** symbolizes the shared culture of the residents whom the Center will serve. During the community engagement process, residents mentioned the desire to see family represented in the artworks. The female figure reading to the children further demonstrates the central importance of matriarchal figures in Black and Brown communities.



# GREATER WHITTIER REGIONAL AQUATIC CENTER



The San Gabriel and Rio Hondo rivers are intertwined with the millennia-old histories of the Native peoples who inhabit this region. The swimming holes created by such rivers became prototypes of the modern public swimming pool. In the early 20th century, hundreds of municipal pools were built across the United States, where they became part of the social fabric of communities as swimming for fun and exercise grew in popularity. In the following decades, they became hotbeds of racial segregation. Today, public pools have returned to the role of community center, but many communities still lack access.

---

The Greater Whittier Regional Aquatic Center is a new public aquatic facility located in the unincorporated area of West Whittier-Los Nietos that aims to provide the community with access to recreational amenities. The Center features a competitive swimming pool, practice pool, and a glass mosaic mural by artist Rebeca Méndez. The artwork *Underwater Sunlight* spans the ceiling of the Center's entrance, lobby, and skylights.

This page and next: *Underwater Sunlight*, photos and artwork by Rebeca Méndez.



## MOSAIC CRAFTSMANSHIP

Measuring 2,100 square feet, *Underwater Sunlight* depicts a swimmer's submerged moment just before breaking the surface, surrounded by dancing air bubbles and blinded by a noonday sun, intricately rendered in mosaic glass by Mosaicos Venecianos de Mexico in Cuernavaca, Mexico.



## HISTORY MEMORIALIZED

A timeline of local histories accompanies the glass mosaic mural with lines of poetry written by students at neighboring Pioneer High School, which express the many manifestations of water in their lives.



## ONGOING ENGAGEMENT

The artist submitted a proposal for additional programming, including a photography workshop with Pioneer High School students in the Aquatic Center pool and a field trip to the Torrance Art Museum to visit her exhibition that is part of the SUR: Biennial.



Scoping / Planning

Artist Selection

Community Engagement

Design

Fabrication

Installation

Collections

# COLLECTIONS

After a civic art project is completed, the artwork is accessioned to the LA County Civic Art Collection. The Civic Art Collections team monitors and supports its maintenance over time. Adding to the task of tracking and caring for over 600 contemporary and historic permanent artworks across County-owned property is the important role of activating the Collection for continued public engagement. We aim to make LA County a region where arts, culture, and creativity are integral to every aspect of civic life for all people and communities. The following pages highlight the work the Collections team is leading to make the Civic Art Collection more reflective of the diverse communities we serve.

**44** PROJECTS IN  
COLLECTIONS





When the night  
has been  
dark in  
your  
eyes of  
me it will  
let me down  
just as  
hardly

CARMEN



# ILLUMINATE LA: COLLECTIVE MEMORY INSTALLATION – GRAND PARK



Across the U.S., it is increasingly acknowledged that artworks and monuments can inspire or perpetuate harmful histories that exclude the rich and diverse history of communities. Illuminate LA is a new initiative of the Civic Art Division created to illuminate the collective and complex history and memory of our region as told through our civic spaces and artworks.

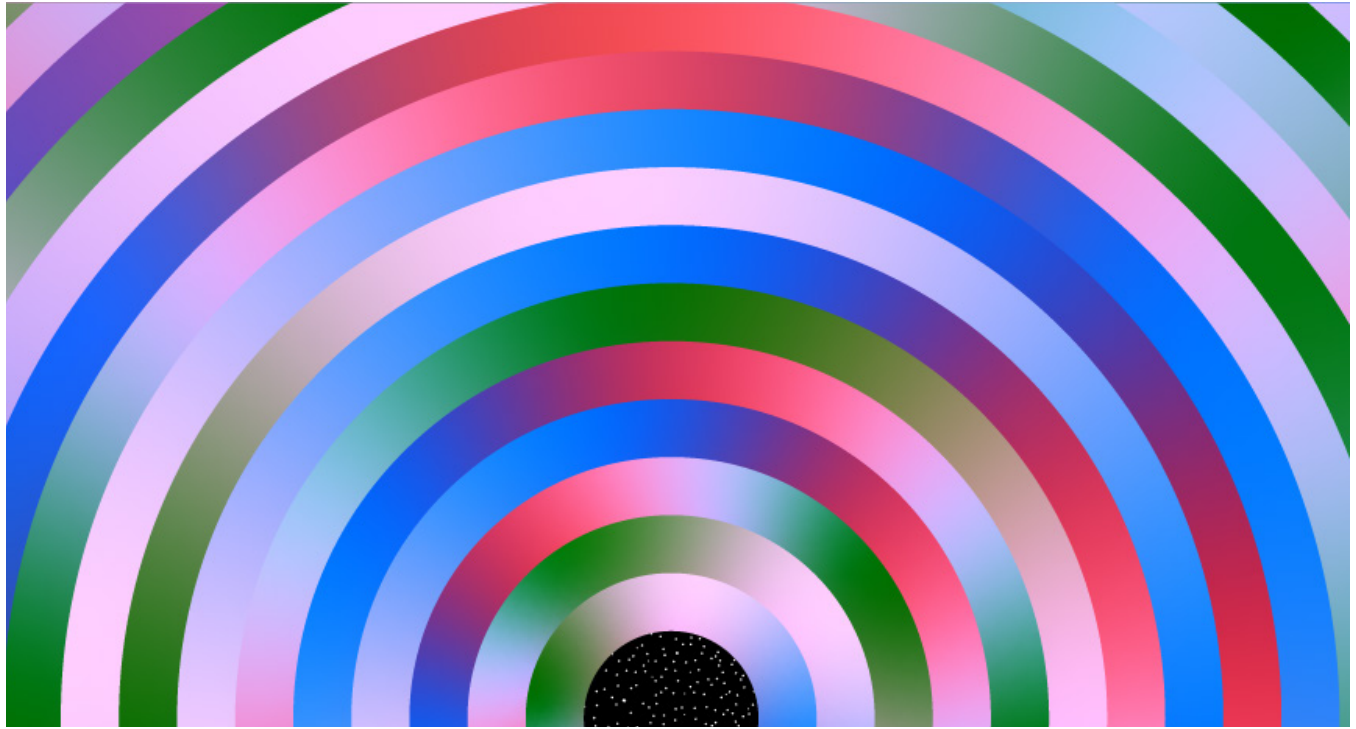
The *Collective Memory Installation*, in partnership with Grand Park, was one such project that offered artists the opportunity to challenge the notion that public monuments control narratives and perpetuate the erasure of marginalized communities. The project invited local artists to share their own cultural narratives, personal histories, and experiences of LA through a digital installation of their artworks in Grand Park with LA City Hall in the background.

This page and next: photos of *Collective Memory Installation* reception in Grand Park by Lauren Cho and Catherine Rodriguez.

**The exhibition was installed from February 25 to March 18, 2023,** and viewable twenty-four hours a day on all-weather LED screens. One hundred works by local artists were selected to be presented weekly and organized according to the following themes: “Our Cities,” “Earthly Spirits,” “Roots,” “Ofrenda,” and “Kinship.”



# CIVIC ART COLLECTION DEMOGRAPHICS STUDY



We seek to create and steward a Los Angeles County Civic Art Collection that is inclusive of all communities in the County; reflects diverse artists, approaches, mediums, cultures, and perspectives; and provides commission opportunities for artists and narratives historically underrepresented in public art.

---

To advance this vision, the Civic Art and Research and Evaluation divisions of the Department, in collaboration with Special Service for Groups, Research and Evaluation team (SSG R&E), launched the first Civic Art Collection Demographic Study in 2021 to conduct analysis of the artworks and artists within the Collection. The study seeks to document the demographic makeup of artists included in the Collection and shed light on how the Civic Art Division’s policies, practices, and management contribute to the diversity and representativeness of the Collection’s artist population.

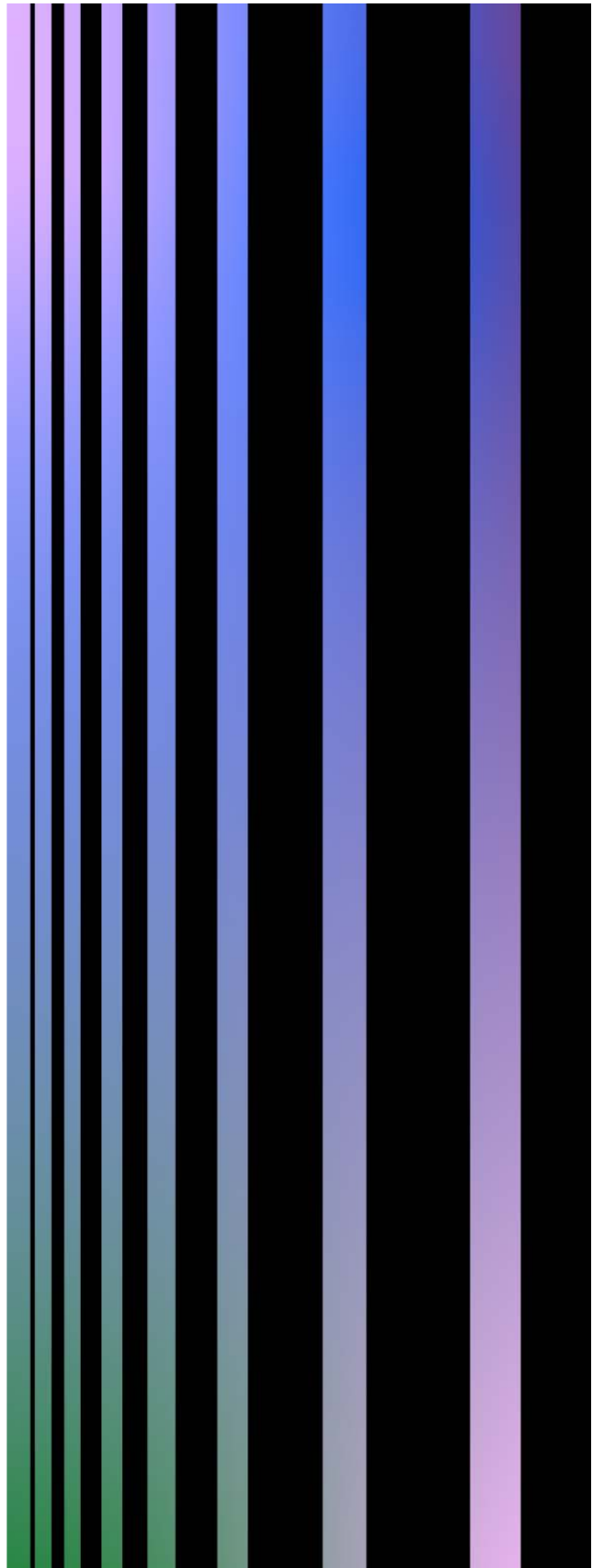
This study is part of a more extensive effort within the Civic Art Division and the Department to center diversity, equity, inclusion, and access to art and to expand economic opportunity for the public and artists within Los Angeles County. The findings explored here represent a starting point to assess policies and practices in the solicitation, outreach, artist selection process, and budget.

## METHODOLOGY

- **The Sample.** The study team invited 179 artists to participate in this survey, and 106 artists completed it.
- **Focus Group.** Two focus groups of six artists helped inform the survey’s content and design, including the survey’s length, the phrasing of questions and answer choices and the flow and sequence of questions. The artists also advocated for more transparency around the purpose and intent of the survey – all of which were integrated into the final design.
- **Analysis.** The SSG research team reviewed, cleaned, and analyzed the quantitative and qualitative survey data to produce the final report.

## AMONG THE KEY FINDINGS

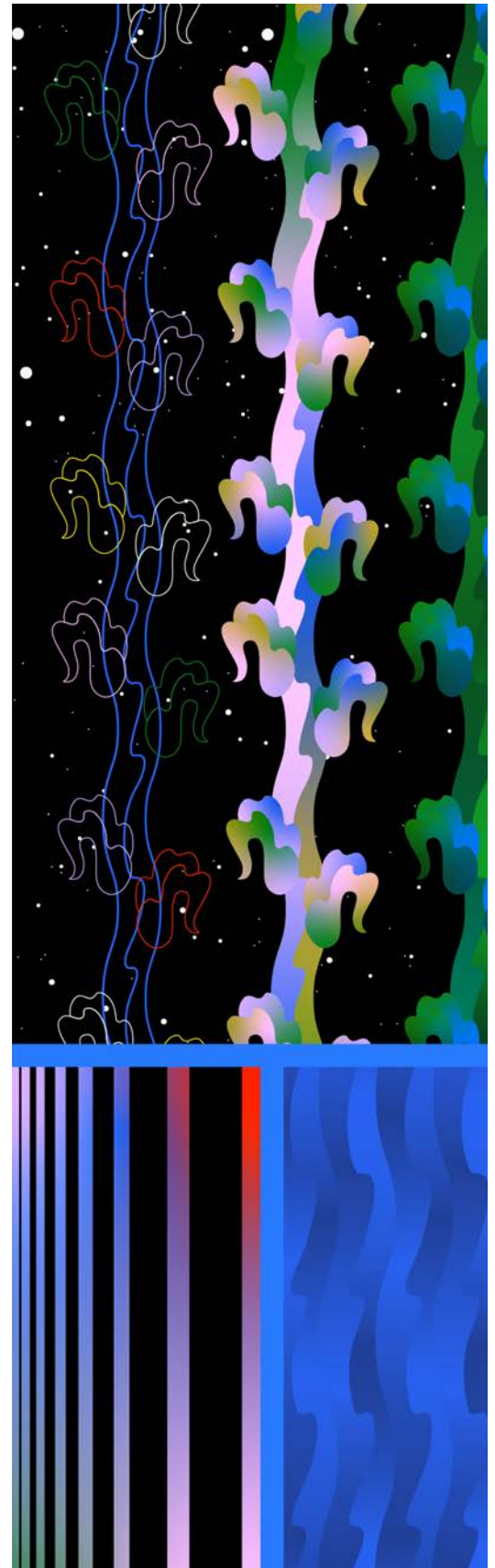
- **Latina/o/x/e artists are the most underrepresented** of all US Census race and ethnicity categories, **making up 9% of responding artists** compared to 49% of the LA County population.
- **Latina/o/x/e artists also received the lowest average commission** compared to other race or ethnic groups.
- **64% of respondents have a master’s degree, doctorate, or other terminal degree**, compared to 13% of the LA County population.



## AMONG THE KEY FINDINGS

- **50% of survey respondents identify as female**, similar to LA County's population. 42% percent of survey respondents identify as male, and 5% of survey respondents identify as genderqueer or gender-nonconforming.
- **Among artists who identified as one race, none identified as American Indian, Alaska Native, Indigenous, or First Nations**, compared to 0.1% of the total LA County population. Among artists who identified as belonging to more than one race, five specified that they identify with one race or ethnicity.
- **18% of survey respondents stated they have a disability.** In LA County, for residents under the age of 65, less than 3% report having a disability.
- **Respondents with higher levels of education received higher contract fees** than those with less education.
- **32% of respondents were born in California** while 24% were born in LA County.

This report provides empirical evidence to support the Civic Art Division and the Department as we continue to prioritize diversity, equity, inclusion, and access to art and expand economic opportunity for artists in LA County. The findings support efforts to assess policies and practices in solicitation, outreach, the artist selection process, and budget. The full report is available on the Arts and Culture website.



# GEORGE WASHINGTON RELOCATION



The George Washington statue located in Grand Park was toppled by protestors in August 2020 and relocated to an offsite storage facility. The Silverlake Conservation firm repaired and reinstalled the statue in the Lincoln Room of the Department of Military and Veteran Affairs' Bob Hope Patriotic Hall in December 2022, placing it in proximity to art and ephemera relating to military history, figures, and events. The *Illuminate LA* event "Undoing Harm Through Visual Art" featured artist-led activities that engaged audiences to explore the purpose of public monuments on the former site of George Washington statue in Grand Park.

---

In May 2023 the art consultant firm Community Connections was selected to conduct research and community engagement to inform the contextualization of the plaque that will accompany the statue at the Hall. The engagement will include input from a diverse group of stakeholders in the veteran community. To begin the community engagement, the consultant is working with the Department of Military and Veterans Affairs, the Department of Arts and Culture, and the First District to identify groups to approach and facilitate meetings. This life-size bronze figure of George Washington dressed in military uniform is a copy of the original granite sculpture by the French artist Jean-Antoine Houdon. Gorham Manufacturing Company cast approximately 30 bronze copies of the statue in the late 19th century. One copy was acquired in 1933 by the Women's Community Service, an auxiliary of the Los Angeles Chamber of Commerce, and presented to the County in 1933 on George Washington's birthday, February 22.



PAID

PAID PAID PAID

PAID

PAID PAID PAID



# PUBLIC ARTISTS IN DEVELOPMENT PROGRAM



Public Artists in Development (PAiD) is a new initiative funded by the Andrew W. Mellon Foundation that promotes the career growth and economic empowerment of diverse artists.

---

This program was created to address structural barriers that hinder the participation of underrepresented artists in public art. PAiD will offer a range of resources, including educational opportunities, training, mentorship, and new project opportunities to encourage the skill-building and professional readiness of underrepresented artists.

PAiD is a pilot program consisting of two cycles of the activities listed below. Each cycle is expected to be completed over a 12 to 18-month period, with activities occurring across different timelines.

## ARTIST COUNCIL

An eight-person Artist Council will solicit artists' perspectives about administrative oversight, new program design decisions, and outreach and create recommendations to benefit artists in the field. Each Council member will receive a \$5,500 stipend for participating and a \$22,500 project budget to develop a temporary project.

## PROFESSIONAL DEVELOPMENT PROGRAMMING

This free professional development programming series will provide artists the tools and training to support various aspects of their career development and elevate creative change strategies emerging across the field.

## PUBLIC ART APPRENTICESHIP

A Public Art Apprenticeship will train and mentor a rotating group of five artists in the specific skills and knowledge required to complete a public art commission. Each apprentice will be granted a \$100,000 - \$150,000 project budget to complete their first permanent public art project. In addition, each apprentice will receive an artist stipend of \$5,500 for participation in the program.

## ARTIST WEB PLATFORM

An artist web platform will provide ongoing access to professional resources, recorded workshops, templates, and other materials for artists.



Art is essential.  
Get **PAID**

COMING FALL 2023

Public Artists in Development (PAiD) is a new program by LA County Department of Arts and Culture to support the career growth and economic empowerment of underrepresented artists across LA County.

Learn more at [LACOUNTYARTS.ORG](http://LACOUNTYARTS.ORG)

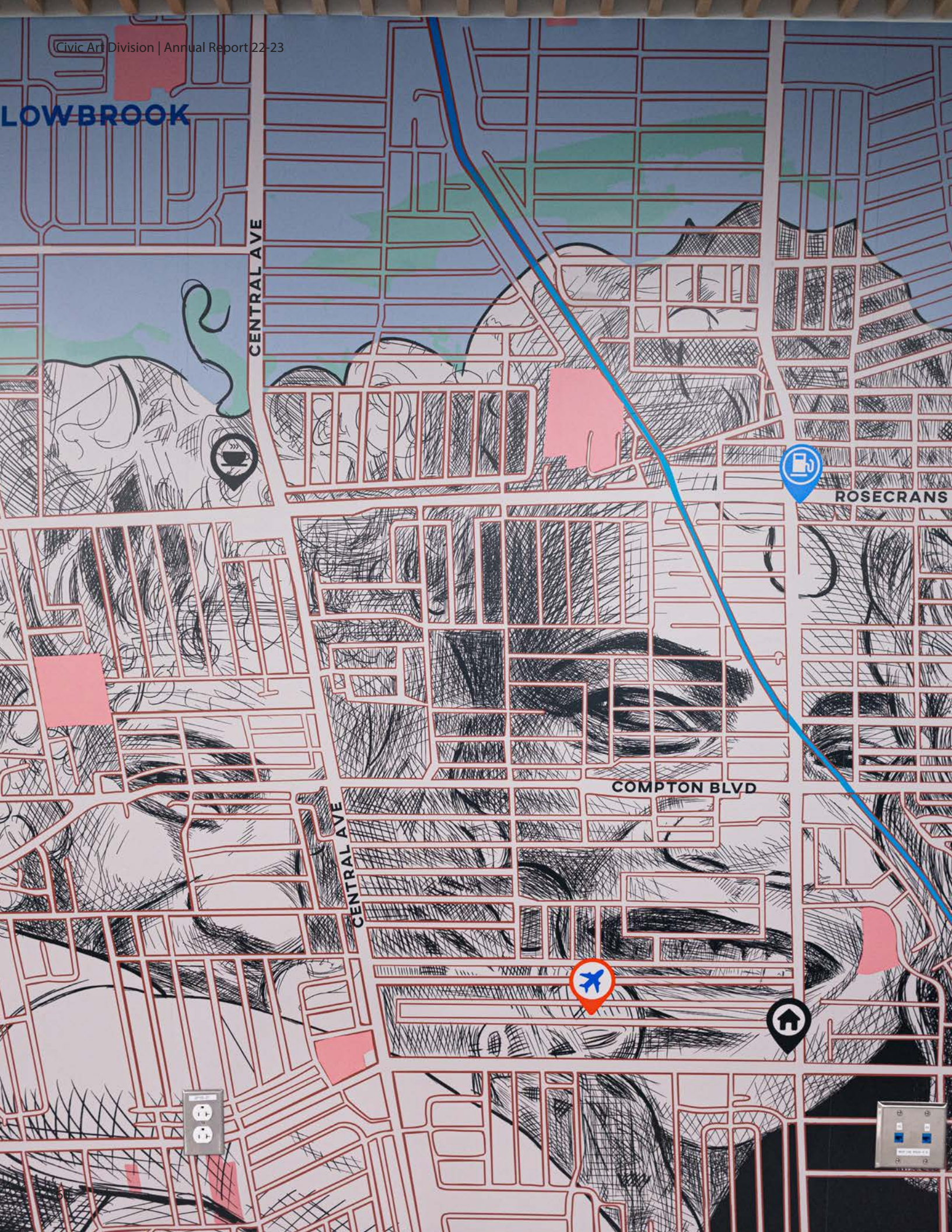
**D≠W** Mellon Foundation Los Angeles County Arts & Culture

# Mellon Foundation



Art consultant Dyson & Womack was contracted to collaborate closely with the Civic Art project team to manage the Artist Council identification process, meetings, and projects, and to develop and enact artist professional development programming. They are also spearheading the community outreach plan that involves enlisting local arts leadership in selecting the Artist Council cohort and organizing the Professional Development Programming series components in 2024.

# LOWBROOK



CENTRAL AVE

ROSECRANS

COMPTON BLVD

CENTRAL AVE

## BOARD OF SUPERVISORS

**Supervisor Hilda L. Solis**, First District

**Supervisor Holly J. Mitchell**, Second District

**Supervisor Sheila Kuehl**, Third District (through 12.05.22)

**Supervisor Lindsey P. Horvath**, Third District (began 12.05.22)

**Supervisor Janice Hahn**, Fourth District

**Supervisor Kathryn Barger**, Fifth District

## DEPARTMENT OF ARTS AND CULTURE

**Kristin Sakoda**

*Director*

**Heather Rigby**

*Chief Deputy*

## ARTS COMMISSIONERS

**Liane Weintraub**

*President*

**Leticia Rhi Buckley**

*Vice President*

**Patrisse Cullors**

*Secretary*

**Madeline Di Nonno**

*Executive Committee Member*

**Eric R. Eisenberg**

*Immediate Past President*

**Alis Clausen Odenthal**

**Anita Ortiz**

**Constance Jolcuvar**

**Diana Diaz**

**Helen Hernandez**

**Jennifer Price-Letscher**

**Pamela Bright-Moon**

**Randi Tahara**

**Rosalind Wyman †**

**Sandra P. Hahn**

## CIVIC ART DIVISION

**Grace Ramirez Gaston**

*Director*

**Lida Venieri**

*Assistant Director*

**Laleña Vellanoweth**

*Conservation and Collections Manager*

**Caroline Kerrigan Lerch**

*Project Manager*

**Iris Anna Regn**

*Project Manager*

**Pat Gomez**

*Senior Manager*

**Brianna MacGillivray**

*Program Specialist*

**Anne Marie Acosta**

*Financial Analyst*

**Danielle Galvan Gomez**

*Registrar*

### FY 2022-23 Annual Report Contributors

Photos by Civic Art staff unless otherwise indicated

Report design and editorial by Brianna MacGillivray

Project data and statistics by Anne Marie Acosta

Graphic design support by Daleen Saah

Copy-editing by Sheri Linden

Previous page: detail of *Rooted* by Floyd Strickland. Photo by Irina Logra.

† Deceased

Los Angeles  
County  
**Arts &  
Culture**

## FIRST DISTRICT

# PROJECTS LIST

### **3rd and Dangler Development**

4639-4655 E. 3rd St., Los Angeles, CA 90022  
DEPARTMENT: Development Authority  
PROJECT TYPE: Public-Private Partnership  
BUDGET: \$75,000  
FUNDING SOURCE: Civic Art Funds (1%)  
ARTIST: Stephanie Mercado  
PROJECT PHASE: Fabrication

### **Anthony Quinn Library - Quezada Mural Conservation 2022**

3965 E. Cesar Chavez Ave., Los Angeles, CA 90063  
DEPARTMENT: Library  
PROJECT TYPE: Collections  
PROJECT COST: \$14,427  
FUNDING SOURCE: LA County Library  
ARTIST: Josefina Quezada  
CONSERVATOR: May & Burch Conservation  
PROJECT PHASE: Completed

### **Bassett Park Multipurpose Building Courtyard**

510 Vineland Ave., Bassett, CA 91746  
DEPARTMENT: Parks and Recreation  
PROJECT TYPE: Capital Project  
BUDGET: \$28,000  
FUNDING SOURCE: Civic Art Funds (1%)  
ARTIST: Álvaro D. Márquez  
PROJECT PHASE: Fabrication

### **Belvedere Community Regional Park - re:Play Program**

4914 E. Cesar Chavez Ave., Los Angeles, CA 90022  
DEPARTMENT: Parks and Recreation  
PROJECT TYPE: Capital Project  
PROJECT COST: \$0  
PROJECT PHASE: Canceled

### **Belvedere Community Regional Park Restroom Renovation Project**

4914 E. Cesar Chavez Ave., Los Angeles, CA 90022  
DEPARTMENT: Parks and Recreation  
PROJECT TYPE: Capital Project  
PROJECT COST: \$0  
PROJECT PHASE: Canceled

### **Belvedere Park Synthetic Soccer Field and General Improvements**

4914 E. Cesar Chavez Ave., Los Angeles, CA 90022  
DEPARTMENT: Parks and Recreation  
PROJECT TYPE: Capital Project  
PROJECT COST: \$0  
PROJECT PHASE: Canceled

### **Bob Hope Patriotic Hall - Ackerman (Doolittle) Mural Conservation**

1816 S. Figueroa St., Los Angeles, CA 90015  
DEPARTMENT: Internal Services, Military and Veterans Affairs  
PROJECT TYPE: Collections  
PROJECT COST: \$34,553  
FUNDING SOURCE: Department of Military and Veterans Affairs  
ARTISTS: Frank Ackerman, Michael Bonelli, Tom Cornelison, Ronald Sabados  
CONSERVATOR: Site & Studio Conservation  
PROJECT PHASE: Completed

### **Carolyn Rosas Park - Reiss Mural Conservation**

18500 Farjardo St., Rowland Heights, CA 91748  
DEPARTMENT: Parks and Recreation  
PROJECT TYPE: Collections  
BUDGET: \$14,700  
FUNDING SOURCE: Civic Art Operating Funds  
ARTIST: Bunnie Reiss  
PROJECT PHASE: Selection

### **City Terrace - Botello Mural Conservation**

1126 N. Hazard Ave., Los Angeles, CA 90063  
DEPARTMENT: Parks and Recreation  
PROJECT TYPE: Collections  
BUDGET: \$107,000  
FUNDING SOURCE: Civic Art Funds (1%)  
ARTIST: Paul Botello  
PROJECT PHASE: Planning

### **Clara Shortridge Foltz Criminal Justice Center - Public Defender Office, 19th Floor**

210 W. Temple St., Los Angeles, CA 90012  
DEPARTMENT: Public Defender  
PROJECT TYPE: Capital Project  
BUDGET: \$165,000  
FUNDING SOURCE: Civic Art Funds (1%)  
PROJECT PHASE: On Hold

### **Clara Shortridge Foltz Criminal Justice Center - Schwartzberg Tapestry Conservation**

210 W. Temple St., Los Angeles, CA 90012  
DEPARTMENT: State Courts  
PROJECT TYPE: Collections  
BUDGET: \$3,000  
FUNDING SOURCE: Civic Art Funds (1%)  
ARTIST: Susan Schwartzberg  
PROJECT PHASE: Planning

# FIRST DISTRICT

## **Coroner - Palmer Sculpture Conservation**

1104 N. Mission Rd., Los Angeles, CA 90033  
DEPARTMENT: Medical Examiner  
PROJECT TYPE: Collections  
PROJECT COST: \$27,325  
FUNDING SOURCE: Department of Medical Examiner  
ARTIST: Erin Shie Palmer  
CONSERVATOR: Fine Arts Conservation  
PROJECT PHASE: Completed

## **Department of Public Social Services (DPSS) Arts District - Martin Mural Re-fabrication**

813 E. 4th Pl., Los Angeles, CA 90013  
DEPARTMENT: Public Social Services  
PROJECT TYPE: Collections  
BUDGET: \$5,000  
FUNDING SOURCE: Department of Public Social Services  
ARTIST: Damon Martin  
PROJECT PHASE: Project Closeout

## **Eastern Avenue Hill – Mapache City Projects Sculpture Relocation**

1100 N. Eastern Ave., Los Angeles, CA 90022  
DEPARTMENT: Internal Services  
PROJECT TYPE: Collections  
BUDGET: \$89,700  
FUNDING SOURCE: Internal Services Department  
ARTIST: Mapache City Projects (Sandra de la Loza, Arturo Romo)  
CONSERVATOR: Site & Studio Conservation  
PROJECT PHASE: Conservation

## **Fort Moore Memorial - Benches Re-fabrication**

501 N. Hill St., Los Angeles, CA 90012  
DEPARTMENT: Chief Executive Office  
PROJECT TYPE: Collections  
PROJECT COST: \$19,900  
FUNDING SOURCE: Chief Executive Office  
ARTIST: n/a  
CONSERVATOR: Williams Art Conservation  
PROJECT PHASE: Completed

## **Fort Moore Memorial - Gilded Wall Conservation**

501 N. Hill St., Los Angeles, CA 90012  
DEPARTMENT: Chief Executive Office  
PROJECT TYPE: Collections  
PROJECT COST: \$68,400  
FUNDING SOURCE: Chief Executive Office  
ARTIST: n/a  
CONSERVATOR: Site & Studio Conservation  
PROJECT PHASE: Completed

## **Fort Moore Pioneer Memorial Restoration**

501 N. Hill St., Los Angeles, CA 90012  
DEPARTMENT: Chief Executive Office  
PROJECT TYPE: Collections  
BUDGET: \$182,300  
FUNDING SOURCE: Civic Art Funds (1%), Chief Executive Office  
ARTISTS: Henry Kreis, Albert Stewart, Gladding, McBean and Company  
CONSERVATORS: Site & Studio Conservation, Williams Art Conservation  
PROJECT PHASE: Punchlist

## **Grand Park - Indigenous Art and Educational Activity**

200 N. Grand Ave., Los Angeles, CA 90012  
DEPARTMENT: Arts and Culture  
PROJECT TYPE: Collections  
PROJECT COST: \$22,872.50  
FUNDING SOURCE: Civic Art Funds (1%)  
ARTISTS: Mercedes Dorame, Cindi Alvitre, Carly Lake, Scott Wilson  
PROJECT PHASE: Completed

## **Hacienda Heights Community and Recreation Center - Dinh Sculpture Conservation**

1234 Valencia Ave., Hacienda Heights, CA 91745  
DEPARTMENT: Parks and Recreation  
PROJECT TYPE: Collections  
PROJECT COST: \$19,000  
FUNDING SOURCE: Department of Parks and Recreation  
ARTIST: James Dinh  
CONSERVATOR: RLA Conservation  
PROJECT PHASE: Completed

## **Hall of Administration Seismic Retrofit**

500 W. Temple St., Los Angeles, CA 90012  
DEPARTMENT: Public Works  
PROJECT TYPE: Capital Project  
BUDGET: TBD  
FUNDING SOURCE: Civic Art Funds (1%)  
ARTIST: TBD  
PROJECT PHASE: Scoping

## **Hall of Records - Public Defender Office, 6th Floor**

320 W. Temple St., Los Angeles, CA 90012  
DEPARTMENT: Public Defender  
PROJECT TYPE: Capital Project  
BUDGET: \$166,000  
FUNDING SOURCE: Civic Art Funds (1%)  
ARTIST(S): Abel Alejandro, Moses X Ball, Kenturah Davis, Andrew Hem, Elana Mann, Sergio Teran, Ian Robertson-Salt, Jody Zellen  
PROJECT PHASE: Fabrication

# PROJECTS LIST

PROJECTS LIST

## FIRST DISTRICT

### **Hall of Records - Regional Planning Office, 13th Floor**

320 W. Temple St., Los Angeles, CA 90012  
DEPARTMENT: Regional Planning  
PROJECT TYPE: Capital Project  
BUDGET: \$112,000  
FUNDING SOURCE: Civic Art Funds (1%)  
ARTIST: TBD  
PROJECT PHASE: Selection

### **Hilda L. Solis Care First Village**

1060 N. Vignes St., Los Angeles, CA 90012  
DEPARTMENT: Board of Supervisors - First District  
PROJECT TYPE: Initiative  
BUDGET: \$150,000  
FUNDING SOURCE: First Supervisorial District  
ARTIST: 3B Collective  
PROJECT PHASE: Fabrication

### **Houdon (George Washington) Statue Relocation**

200 N. Grand Ave., Los Angeles, CA 90012  
DEPARTMENTS: Internal Services, Military and Veterans Affairs  
PROJECT TYPE: Collections  
BUDGET: \$39,300  
FUNDING SOURCE: Department of Arts and Culture, Civic Art Operating Funds  
ARTISTS: Jean-Antoine Houdon and Gorham Manufacturing Company  
CONSERVATOR: Silverlake Conservation  
PROJECT PHASE: Selection

### **La Puente Enhanced One-Stop Development Center**

16005 Central Ave., La Puente, CA 91744  
DEPARTMENT: Public Works  
PROJECT TYPE: Capital Project  
BUDGET: \$219,000  
FUNDING SOURCES: Civic Art Funds (1%), Department of Public Works  
ARTIST: Carly Lake  
PROJECT PHASE: Installation

### **Los Angeles General Medical Center - Ballin (Medical Sciences) Fresco Conservation**

2051 Marengo St., Los Angeles, CA 90033  
DEPARTMENT: Health Services  
PROJECT TYPE: Collections  
PROJECT COST: \$180,386.62  
FUNDING SOURCE: Civic Art Funds (1%)  
ARTISTS: Hugo Ballin, H.W. Johnson, E. Neuman, Vsevolod Ulianoff  
CONSERVATOR: Zebala & Partners  
PROJECT PHASE: Completed

### **Los Angeles General Medical Center - Child Care Center**

1200 N. State St., Los Angeles, CA 90033  
DEPARTMENT: Health Services  
PROJECT TYPE: Capital Project  
BUDGET: \$99,600  
FUNDING SOURCE: Civic Art Funds (1%)  
ARTIST: Andrew Hem  
PROJECT PHASE: Punchlist

### **Los Angeles General Medical Center - Coerced Sterilization Recognition Project**

2051 Marengo St., Los Angeles, CA 90033  
DEPARTMENT: Health Services  
PROJECT TYPE: Initiative  
PROJECT COST: \$134,953.94  
FUNDING SOURCES: Civic Art Funds (1%), Department of Health Services  
ARTIST: Phung Huynh  
PROJECT PHASE: Completed

### **Los Angeles General Medical Center - Crisis Recuperative Care Center Program**

1774 Zonal Ave., Unit E, Los Angeles, CA 90033  
DEPARTMENT: Health Services  
PROJECT TYPE: Capital Project  
BUDGET: \$130,300  
FUNDING SOURCE: Civic Art Funds (1%)  
ARTIST: Star Montana  
PROJECT PHASE: Project Closeout

### **Los Angeles General Medical Center - Howe (Baroda Wall) Sculpture Donation**

1200 N. State St., Los Angeles, CA 90033  
DEPARTMENT: Health Services  
PROJECT TYPE: Collections  
BUDGET: \$54,000  
FUNDING SOURCES: Civic Art Funds (1%), Donation  
ARTIST: Brad Howe  
PROJECT PHASE: Installation

### **Los Angeles General Medical Center - Residential Treatment Program A**

1774 Zonal Ave., Unit A, Los Angeles, CA 90033  
DEPARTMENT: Mental Health  
PROJECT TYPE: Capital Project  
BUDGET: \$137,200  
FUNDING SOURCE: Civic Art Funds (1%)  
ARTIST: Lorenzo Hurtado Segovia  
PROJECT PHASE: Engagement



# FIRST DISTRICT

## **Los Angeles General Medical Center - Residential Treatment Program B**

1774 Zonal Ave., Unit B, Los Angeles, CA 90033  
DEPARTMENT: Mental Health  
PROJECT TYPE: Capital Project  
BUDGET: \$136,900  
FUNDING SOURCE: Civic Art Funds (1%)  
ARTIST: Jaime Scholnick  
PROJECT PHASE: Project Closeout

## **Los Angeles General Medical Center - Residential Treatment Program C**

1774 Zonal Ave., Unit C, Los Angeles, CA 90033  
DEPARTMENT: Mental Health  
PROJECT TYPE: Capital Project  
BUDGET: \$127,600  
FUNDING SOURCE: Civic Art Funds (1%)  
ARTIST: Patrick Martinez  
PROJECT PHASE: Project Closeout

## **Los Angeles General Medical Center Restorative Care Villages - Arts Purchase Program**

1774 Zonal Ave., Los Angeles, CA 90033  
DEPARTMENTS: Health Services, Mental Health  
PROJECT TYPE: Capital Project  
BUDGET: \$57,800  
FUNDING SOURCE: Civic Art Funds (1%)  
ARTIST(S): Ball-Nogues Studio, Renée A. Fox, Olalekan Jeyifous, Patrick Martinez, Star Montana, Jaime Scholnick, Lorenzo Hurtado Segovia  
PROJECT PHASE: Planning

## **MacLaren Community Park - North Side**

4024 Durfee Ave., El Monte, CA 91732  
DEPARTMENT: Chief Executive Office  
PROJECT TYPE: Capital Project  
BUDGET: TBD  
FUNDING SOURCE: Civic Art Funds (1%)  
ARTIST: TBD  
PROJECT PHASE: Scoping

## **MacLaren Hall Redevelopment Opportunity**

4024 Durfee Ave., El Monte, CA 91732  
DEPARTMENT: Chief Executive Office  
PROJECT TYPE: PPP (DDCCP)  
BUDGET: TBD  
FUNDING SOURCE: Civic Art Funds (1%)  
ARTIST: TBD  
PROJECT PHASE: Scoping

## **Medical Examiner Counseling Rooms**

1104 N. Mission Rd., Los Angeles, CA 90033  
DEPARTMENT: Medical Examiner  
PROJECT TYPE: Initiative  
BUDGET: \$77,000  
FUNDING SOURCE: Civic Art Funds (1%)  
ARTIST: TBD  
PROJECT PHASE: Selection

## **Montebello Park Elementary Arts and STEM Integrated Learning Project**

6300 Northside Dr., Los Angeles, CA 90022  
DEPARTMENT: Public Works  
PROJECT TYPE: Capital Project  
BUDGET: \$30,000  
FUNDING SOURCE: Civic Art Funds (1%)  
CONSULTANT: reDiscover Center  
PROJECT PHASE: Engagement

## **Perotti (Christopher Columbus) Statue Relocation and Storage**

200 N. Grand Ave., Los Angeles, CA 90012  
DEPARTMENT: Internal Services  
PROJECT TYPE: Collections  
BUDGET: \$25,000  
FUNDING SOURCE: Internal Services Department  
ARTIST: Paolo Perotti  
PROJECT PHASE: Ongoing

## **Peter F. Schabarum Regional Park**

17250 Colima Rd., Rowland Heights, CA 91748  
DEPARTMENT: Parks and Recreation  
PROJECT TYPE: Capital Project  
PROJECT COST: \$0  
PROJECT PHASE: Canceled

## **Public Works Headquarters - Courtyard**

900 S. Fremont Ave., Alhambra, CA 91803  
DEPARTMENT: Public Works  
PROJECT TYPE: Capital Project  
PROJECT COST: \$127,271.31  
FUNDING SOURCE: Civic Art Funds (1%)  
ARTIST: Geoff McFetridge  
PROJECT PHASE: Completed

## **Public Works Headquarters - CS-AIR**

900 S. Fremont Ave., Alhambra, CA 91803  
DEPARTMENT: Public Works  
PROJECT TYPE: Capital Project  
PROJECT COST: \$0  
PROJECT PHASE: Canceled

# PROJECTS LIST

PROJECTS LIST

## FIRST DISTRICT

### **Puente Hills Regional Park**

13130 Crossroads Parkway S., City of Industry, CA 91746

DEPARTMENT: Parks and Recreation

PROJECT TYPE: Capital Project

BUDGET: TBD

FUNDING SOURCE: Civic Art Funds (1%)

ARTIST: TBD

PROJECT PHASE: Scoping

### **Restorative Care Villages - Publication**

Various, Los Angeles, CA

DEPARTMENT: Mental Health

PROJECT TYPE: Initiative

BUDGET: \$73,800

FUNDING SOURCE: Civic Art Funds (1%)

ARTIST: n/a

PROJECT PHASE: Planning

### **Ruben F. Salazar Park Multipurpose Room - Haro Murals**

3864 Whittier Blvd., Los Angeles, CA 90023

DEPARTMENT: Parks and Recreation

PROJECT TYPE: Collections

BUDGET: TBD

FUNDING SOURCE: Civic Art Funds (1%)

ARTIST: Richard Haro

PROJECT PHASE: Planning

### **Ruben F. Salazar Park Vision Project**

3864 Whittier Blvd., Los Angeles, CA 90023

DEPARTMENT: Parks and Recreation

PROJECT TYPE: Capital Project

BUDGET: \$200,000

FUNDING SOURCE: Civic Art Funds (1%)

ARTIST: TBD

PROJECT PHASE: Planning

### **San Angelo Park - Lonner Mural Conservation**

245 S. San Angelo Ave., La Puente, CA 91746

DEPARTMENT: Parks and Recreation

PROJECT TYPE: Collections

BUDGET: \$19,300

FUNDING SOURCE: Department of Parks and Recreation

ARTIST: Mara Lonner

PROJECT PHASE: Selection

### **San Gabriel Valley Aquatic Center**

635 N. California Ave., La Puente, CA 91744

DEPARTMENT: Parks and Recreation

PROJECT TYPE: Capital Project

BUDGET: \$271,000

FUNDING SOURCE: Civic Art Funds (1%)

ARTIST: TBD

PROJECT PHASE: Planning

### **Santa Fe Dam Swim Beach Restroom #3 Replacement**

15501 E. Arrow Hwy., Baldwin Park, CA 91706

DEPARTMENT: Parks and Recreation

PROJECT TYPE: Capital Project

BUDGET: \$23,000

FUNDING SOURCE: Civic Art Funds (1%)

ARTIST: TBD

PROJECT PHASE: Scoping

### **Sound Art - Parks Restroom Program (Atlantic Avenue Park)**

570 S. Atlantic Blvd., Los Angeles, CA 90022

DEPARTMENT: Parks and Recreation

PROJECT TYPE: Capital Project

BUDGET: \$21,000

FUNDING SOURCE: Civic Art Funds (1%)

ARTIST: TBD

PROJECT PHASE: Selection

### **Whittier Narrows Recreation Area - Dominguez Sculpture Conservation**

750 S. Santa Anita Ave., South El Monte, CA 91733

DEPARTMENT: Parks and Recreation

PROJECT TYPE: Capital Project

BUDGET: \$49,000

FUNDING SOURCE: Civic Art Funds (1%)

ARTIST: Benjamin Dominguez

PROJECT PHASE: Planning

Total SD1 Projects: 51

## SECOND DISTRICT

### **3965 South Vermont Avenue - CS-AIR**

3965 S. Vermont Ave., Los Angeles, CA 90037  
DEPARTMENT: Probation  
PROJECT TYPE: Capital Project  
PROJECT COST: \$79,984.52  
FUNDING SOURCE: Civic Art Funds (1%)  
ARTIST: Fabian Debora  
PROJECT PHASE: Completed

### **3965 South Vermont Avenue - Maintenance Program**

3965 S. Vermont Ave., Los Angeles, CA 90037  
DEPARTMENT: Probation  
PROJECT TYPE: Collections  
BUDGET: \$30,000  
FUNDING SOURCE: Civic Art Funds (1%)  
ARTIST: Olalekan Jeyifous  
PROJECT PHASE: Ongoing

### **3965 South Vermont Avenue - Vinyl Murals**

3965 S. Vermont Ave., Los Angeles, CA 90037  
DEPARTMENT: Probation  
PROJECT TYPE: Capital Project  
PROJECT COST: \$118,984.92  
FUNDING SOURCE: Civic Art Funds (1%)  
ARTIST: Olalekan Jeyifous  
PROJECT PHASE: Completed

### **95th and Normandie Pocket Park**

9501 S. Normandie Ave., Los Angeles, CA 90044  
DEPARTMENT: Parks and Recreation  
PROJECT TYPE: Capital Project  
PROJECT COST: \$0  
FUNDING SOURCE: Civic Art Funds (1%)  
ARTIST: n/a  
PROJECT PHASE: Canceled

### **Burton W. Chace Park - Medallion Project**

13650 Mindanao Way, Marina del Rey, CA 90292  
DEPARTMENT: Beaches and Harbors  
PROJECT TYPE: Capital Project  
PROJECT COST: \$0  
PROJECT PHASE: Canceled

### **Burton W. Chace Park - Romanelli Sculpture Conservation**

13650 Mindanao Way, Marina del Rey, CA 90292  
DEPARTMENT: Beaches and Harbors  
PROJECT TYPE: Collections  
BUDGET: \$32,000  
FUNDING SOURCE: Civic Art Funds (1%)  
ARTIST: Carlo Alfred Romanelli  
PROJECT PHASE: Scoping

### **Col. Leon H. Washington Park Maintenance Yard/ Restroom Replacement Project**

8908 Maie Ave., Los Angeles, CA 90002  
DEPARTMENT: Parks and Recreation  
PROJECT TYPE: Capital Project  
PROJECT COST: \$0  
PROJECT PHASE: Canceled

### **Enterprise Park - Strayhorn Tiled Artwork Conservation**

13055 Clovis St., Los Angeles, CA 90059  
DEPARTMENT: Parks and Recreation  
PROJECT TYPE: Collections  
BUDGET: \$2,400  
FUNDING SOURCE: Civic Art Funds (1%)  
ARTIST: Robin Strayhorn  
CONSERVATOR: RLA Conservation  
PROJECT PHASE: Conservation

### **Florence Library - Children's Area**

7807 S. Compton Ave., Los Angeles, CA 90001  
DEPARTMENT: Library  
PROJECT TYPE: Capital Project  
BUDGET: \$55,000  
FUNDING SOURCE: Civic Art Funds (1%)  
CONSULTANT: Lenore French - Transformation Arts  
PROJECT PHASE: Selection

### **Florence Library - Magallanes Mural Deaccession**

1616 E. Florence Ave., Los Angeles, CA 90001  
DEPARTMENT: Library  
PROJECT TYPE: Collections  
PROJECT COST: \$0  
ARTIST: Oscar Magallanes  
PROJECT PHASE: Completed

### **Franklin D. Roosevelt Park Restroom Replacement and Renovation Project**

7600 Graham Ave., Los Angeles, CA 90001  
DEPARTMENT: Parks and Recreation  
PROJECT TYPE: Capital Project  
PROJECT COST: \$0  
PROJECT PHASE: Canceled

### **Golden State Mutual Art Collection**

Various Locations in Second District, Los Angeles County  
DEPARTMENT: Board of Supervisors - Second District  
PROJECT TYPE: Collections  
BUDGET: \$257,200  
FUNDING SOURCE: Civic Art Funds (1%)  
ARTISTS: Various  
PROJECT PHASE: Ongoing

# PROJECTS LIST

## SECOND DISTRICT

# PROJECTS LIST

**Harbor-UCLA Central Green**  
1000 W. Carson St., Torrance, CA 90502  
DEPARTMENT: Health Services  
PROJECT TYPE: Capital Project  
BUDGET: \$1,003,800  
FUNDING SOURCE: Civic Art Funds (1%)  
ARTIST: Ball-Nogues Studio  
PROJECT PHASE: Engagement

**Harbor-UCLA Inpatient Lobby**  
1000 W. Carson St., Torrance, CA 90502  
DEPARTMENT: Health Services  
PROJECT TYPE: Capital Project  
BUDGET: \$1,003,800  
FUNDING SOURCE: Civic Art Funds (1%)  
ARTIST: Jaime Scholnick  
PROJECT PHASE: Engagement

**Helen Keller Park - Martinez Tiled Artwork Conservation**  
12521 S. Vermont Ave., West Athens, CA 90044  
DEPARTMENT: Parks and Recreation  
PROJECT TYPE: Collections  
BUDGET: \$3,300  
FUNDING SOURCE: Civic Art Funds (1%)  
ARTIST: Michele Martinez  
CONSERVATOR: Silverlake Conservation  
PROJECT PHASE: Conservation

**Jacqueline Avant Children and Family Center**  
1741 E. 120th St., Los Angeles, CA 90059  
DEPARTMENT: Mental Health  
PROJECT TYPE: Capital Project  
BUDGET: \$207,500  
FUNDING SOURCE: Civic Art Funds (1%)  
ARTIST: Floyd Strickland  
PROJECT PHASE: Artist Closeout

**Kenneth Hahn State Recreation Area - Green Valley Connection**  
4100 S. La Cienega Blvd., Los Angeles, CA 90056  
DEPARTMENT: Parks and Recreation  
PROJECT TYPE: Capital Project  
PROJECT COST: \$0  
PROJECT PHASE: Canceled

**Kenneth Hanh Japanese Garden Renovation**  
4100 S. Cienega Blvd., Los Angeles, CA 90056  
DEPARTMENT: Parks and Recreation  
PROJECT TYPE: Capital Project  
BUDGET: \$26,000  
FUNDING SOURCE: Civic Art Funds (1%)  
ARTIST: TBD  
PROJECT PHASE: Scoping

**Lennox Park Pool House - Healy Tiled Artwork Conservation**  
10828 S. Condon Ave., Lennox, CA 90304  
DEPARTMENT: Parks and Recreation  
PROJECT TYPE: Collections  
BUDGET: \$6,600  
FUNDING SOURCE: Civic Art Funds (1%)  
ARTIST: Wayne Healy  
CONSERVATOR: Silverlake Conservation  
PROJECT PHASE: Conservation

**Magic Johnson Park - Arts Programming**  
905 E. El Segundo Blvd., Los Angeles, CA 90059  
DEPARTMENT: Parks and Recreation  
PROJECT TYPE: Capital Project  
BUDGET: \$120,200  
FUNDING SOURCE: Civic Art Funds (1%)  
ARTIST: n/a  
PROJECT PHASE: Planning

**Magic Johnson Park - CS-AIR**  
905 E. El Segundo Blvd., Los Angeles, CA 90059  
DEPARTMENT: Parks and Recreation  
PROJECT TYPE: Capital Project  
PROJECT COST: \$95,842.03  
FUNDING SOURCE: Civic Art Funds (1%)  
ARTIST: Sandra de la Loza  
PROJECT PHASE: Completed

**Marina del Rey Parking Structure**  
Mindanao Way and Admiralty Way, Marina del Rey, CA 90292  
DEPARTMENT: Beaches and Harbors  
PROJECT TYPE: Capital Project  
BUDGET: \$162,000  
FUNDING SOURCE: Civic Art Funds (1%)  
ARTIST: TBD  
PROJECT PHASE: Planning

**Marina del Rey Public Safety Dock Replacement**  
13851 Fiji Way, Marina del Rey, CA 90292  
DEPARTMENT: Beaches and Harbors  
PROJECT TYPE: Capital Project  
PROJECT COST: \$0  
PROJECT PHASE: Canceled

## SECOND DISTRICT

### **Martin Luther King, Jr. Community Hospital - Suter Painting Conservation**

1680 E. 120th St., Los Angeles, CA 90059  
DEPARTMENT: Second District  
PROJECT TYPE: Collections  
PROJECT COST: \$9,088.46  
FUNDING SOURCE: Civic Art Funds (1%)  
ARTIST: Lyle Suter  
CONSERVATOR: Zebala & Partners  
PROJECT PHASE: Completed

### **Martin Luther King, Jr. Medical Center - Moody Photo Collage Accession and Plaque**

1670-1680 E. 120th St., Los Angeles, CA 90059  
DEPARTMENT: Health Services  
PROJECT TYPE: Collections  
BUDGET: \$500  
FUNDING SOURCE: Civic Art Funds (1%)  
ARTIST: Dominique Moody  
PROJECT PHASE: Planning

### **Martin Luther King, Jr. Recuperative Care Center - Rodriguez Plaque**

1670 E. 120th St., Los Angeles, CA 90059  
DEPARTMENT: Health Services  
PROJECT TYPE: Collections  
BUDGET: \$500  
FUNDING SOURCE: Civic Art Funds (1%)  
ARTIST: Sandra Rodriguez  
PROJECT PHASE: Planning

### **Mary M. Bethune Park - Tzanetopoulos Tiled Artwork Conservation**

1244 E. 61st St., Los Angeles, CA 90001  
DEPARTMENT: Parks and Recreation  
PROJECT TYPE: Collections  
BUDGET: \$3,900  
FUNDING SOURCE: Civic Art Funds (1%)  
ARTIST: Paul Tzanetopoulos  
CONSERVATOR: Silverlake Conservation  
PROJECT PHASE: Conservation

### **Mary M. Bethune Park General Improvements**

1244 E. 61st St., Los Angeles, CA 90001  
DEPARTMENT: Parks and Recreation  
PROJECT TYPE: Capital Project  
BUDGET: \$8,000  
FUNDING SOURCE: Civic Art Funds (1%)  
ARTIST: TBD  
PROJECT PHASE: Scoping

### **Middlebrook Artwork Transport and Storage**

7807 S. Compton Ave., Los Angeles, CA 90001  
DEPARTMENT: Aging and Disabilities  
PROJECT TYPE: Collections  
BUDGET: \$18,700  
FUNDING SOURCE: Civic Art Funds (1%)  
ARTIST: Willie Middlebrook  
CONSERVATOR: Zebala & Partners  
PROJECT PHASE: Project Closeout

### **Mona Park - Warren Tiled Artwork Conservation**

2291 E. 121st St., Compton, CA 90222  
DEPARTMENT: Parks and Recreation  
PROJECT TYPE: Collections  
BUDGET: \$3,800  
FUNDING SOURCE: Civic Art Funds (1%)  
ARTIST: Dakota Warren  
CONSERVATOR: Silverlake Conservation  
PROJECT PHASE: Conservation

### **Park to Playa Mural Conservation**

5950 Stoneview Dr., Culver City, CA 90232  
DEPARTMENT: Parks and Recreation  
PROJECT TYPE: Collections  
PROJECT COST: \$5,000  
FUNDING SOURCE: Civic Art Operating Funds  
ARTIST: Otis College of Art and Design Creative Action Program  
CONSERVATOR: Zebala & Partners  
PROJECT PHASE: Completed

### **Park to Playa Trail - Temporary Mural**

5950 Stoneview Dr., Culver City, CA 90232  
DEPARTMENT: Parks and Recreation  
PROJECT TYPE: Capital Project  
PROJECT COST: \$7,000  
FUNDING SOURCE: Civic Art Funds (1%)  
ARTIST: Otis College of Art and Design - David Russell  
PROJECT PHASE: Completed

### **SD2 Play Program**

Various Locations in Second District, Los Angeles County  
DEPARTMENT: Parks and Recreation  
PROJECT TYPE: Capital Project  
BUDGET: \$237,000  
FUNDING SOURCE: Civic Art Funds (1%)  
CONSULTANT: LBP2 Consulting  
PROJECT PHASE: Selection

# PROJECTS LIST

PROJECTS LIST

## SECOND DISTRICT

### Sound Art - Parks Restroom Program (Athens Park)

12603 S. Broadway, Los Angeles, CA 90061  
DEPARTMENT: Parks and Recreation  
PROJECT TYPE: Capital Project  
BUDGET: \$21,000  
FUNDING SOURCE: Civic Art Funds (1%)  
CONSULTANT: Laura Whitcomb - Label Curatorial  
PROJECT PHASE: Selection

### Ted Watkins Memorial Park - Strayhorn Tiled Artwork Conservation

1335 E. 103rd St., Los Angeles, CA 90002  
DEPARTMENT: Parks and Recreation  
PROJECT TYPE: Collections  
BUDGET: \$9,000  
FUNDING SOURCE: Civic Art Funds (1%)  
ARTIST: Robin Strayhorn  
PROJECT PHASE: Selection

### Vermont Corridor - Lobby

510 S. Vermont Ave., Los Angeles, CA 90020  
DEPARTMENT: Mental Health  
PROJECT TYPE: PPP (DDCCP)  
PROJECT COST: \$199,376.09  
FUNDING SOURCES: Civic Art Funds (1%),  
LA County Development Authority  
ARTIST: Suzy Taekyung Kim  
PROJECT PHASE: Completed

### Vermont Corridor - Terrace

510 S. Vermont Ave., Los Angeles, CA 90020  
DEPARTMENT: Mental Health  
PROJECT TYPE: PPP (DDCCP)  
PROJECT COST: \$829,111.04  
FUNDING SOURCES: Civic Art Funds (1%), LA County  
Development Authority  
ARTIST: Amir H. Fallah  
PROJECT PHASE: Completed

### Victoria Community Regional Park Restroom Renovation Project

419 Martin Luther King Jr. St., Carson, CA 90746  
DEPARTMENT: Parks and Recreation  
PROJECT TYPE: Capital Project  
PROJECT COST: \$0  
FUNDING SOURCE: Civic Art Funds (1%)  
PROJECT PHASE: Canceled

### Willowbrook Senior Center - Community Engagement Workshop

12915 Jarvis Ave., Los Angeles, CA 90061  
DEPARTMENT: Aging and Disabilities  
PROJECT TYPE: Capital Project  
BUDGET: \$7,000  
FUNDING SOURCE: Civic Art Funds (1%)  
CONSULTANT: Abigail Duckor  
PROJECT PHASE: Selection

Total SD2 Projects: 39

## THIRD DISTRICT

### El Cariso Park - Glassman Sculpture Conservation

13100 Hubbard St., Sylmar, CA 91342  
DEPARTMENT: Parks and Recreation  
PROJECT TYPE: Collections  
PROJECT COST: \$30,160  
FUNDING SOURCE: Civic Art Funds (1%)  
ARTIST: Stephen Glassman  
CONSERVATOR: RLA Conservation  
PROJECT PHASE: Completed

### LA River Headwaters Pavilion - Canoga Park

21416 Bassett St., Los Angeles, CA 91303  
DEPARTMENT: Public Works  
PROJECT TYPE: Initiative  
BUDGET: \$400,000  
FUNDING SOURCE: Grant Funds  
ARTIST: TBD  
PROJECT PHASE: Planning

### Olive View-UCLA - Mental Health Urgent Care Center

14228 Saranac Ln., Sylmar, CA 91342  
DEPARTMENT: Mental Health  
PROJECT TYPE: Capital Project  
BUDGET: \$146,900  
FUNDING SOURCE: Civic Art Funds (1%)  
ARTIST: Ball-Nogues Studio  
PROJECT PHASE: Project Closeout

### Olive View-UCLA - Mental Health Wellness Center

14238 Saranac Ln., Sylmar, CA 91342  
DEPARTMENT: Mental Health  
PROJECT TYPE: Capital Project  
BUDGET: \$67,000  
FUNDING SOURCE: Civic Art Funds (1%)  
ARTIST: Michael Waugh  
PROJECT PHASE: Project Closeout

# THIRD DISTRICT

## **Olive View-UCLA - Recuperative Care Center**

14134 Bucher Ave., Sylmar, CA 91342  
DEPARTMENT: Health Services  
PROJECT TYPE: Capital Project  
BUDGET: \$342,700  
FUNDING SOURCES: Civic Art Funds (1%),  
Third Supervisorial District  
ARTIST: Debra Scacco  
PROJECT PHASE: Design

## **Olive View-UCLA - Residential Treatment Program A**

14119 Bucher Ave., Sylmar, CA 91342  
DEPARTMENT: Mental Health  
PROJECT TYPE: Capital Project  
BUDGET: \$157,700  
FUNDING SOURCE: Civic Art Funds (1%)  
ARTIST: Renée A. Fox  
PROJECT PHASE: Project Closeout

## **Olive View-UCLA - Residential Treatment Program D**

14149 Bucher Ave., Sylmar, CA 91342  
DEPARTMENT: Mental Health  
PROJECT TYPE: Capital Project  
BUDGET: \$157,700  
FUNDING SOURCE: Civic Art Funds (1%)  
ARTIST: Olalekan Jeyifous  
PROJECT PHASE: Project Closeout

## **Olive View-UCLA Restorative Care Village - Arts Purchase Program**

14445 Olive View Dr., Sylmar, CA 91342  
DEPARTMENT: Health Services, Mental Health  
PROJECT TYPE: Capital Project  
BUDGET: \$57,800  
FUNDING SOURCE: Civic Art Funds (1%)  
ARTIST: Ball-Nogues Studio, Renée A. Fox, Olalekan Jeyifous  
PROJECT PHASE: Planning

## **Restorative Care Villages - Publication**

14445 Olive View Dr., Sylmar, CA 91342  
DEPARTMENT: Mental Health  
PROJECT TYPE: Initiative  
BUDGET: \$73,800  
FUNDING SOURCE: Civic Art Funds (1%)  
ARTIST: n/a  
PROJECT PHASE: Planning

## **VA Hospital - Metro Donation**

11301 Wilshire Blvd., Los Angeles, CA 90073  
DEPARTMENT: Public Works  
PROJECT TYPE: Initiative  
BUDGET: \$0  
ARTIST: Piece by Piece - Dawn Mendelson  
PROJECT PHASE: Design

## **Zev Yaroslavsky Family Support Center - East Lobby**

7515 Van Nuys Blvd., Van Nuys, CA 91405  
DEPARTMENT: Public Works  
PROJECT TYPE: Capital Project  
PROJECT COST: \$104,961.48  
FUNDING SOURCE: Civic Art Funds (1%)  
ARTIST: Chris Natrop  
PROJECT PHASE: Completed

Total SD3 Projects: 11

# PROJECTS LIST

## FOURTH DISTRICT

# PROJECTS LIST

### **Dorothy Kirby Center - Stained Glass Accession**

1500 S. McDonnell Ave., Commerce, CA 90040  
DEPARTMENT: Probation  
PROJECT TYPE: Collections  
BUDGET: \$14,000  
FUNDING SOURCE: Civic Art Funds (1%)  
ARTIST: Unknown  
PROJECT PHASE: Planning

### **Greater Whittier Regional Aquatic Center**

8028 Pioneer Blvd., Whittier, CA 90606  
DEPARTMENT: Parks and Recreation  
PROJECT TYPE: Capital Project  
BUDGET: \$324,000  
FUNDING SOURCE: Civic Art Funds (1%)  
ARTIST: Rebeca Méndez  
PROJECT PHASE: Engagement

### **Los Nietos Community and Senior Center - Art Purchase**

11640 Slauson Ave., Whittier, CA 90606  
DEPARTMENT: Aging and Disabilities  
PROJECT TYPE: Capital Project  
PROJECT COST: \$16,009.22  
FUNDING SOURCE: Civic Art Funds (1%)  
ARTISTS: Wayne Healy, Pola Lopez, Andrea Ramirez, Laura Vazquez Rodriguez  
PROJECT PHASE: Completed

### **Nogales Park - Security Building**

2603 Grand Ave., Walnut Park, CA 90255  
DEPARTMENT: Parks and Recreation  
PROJECT TYPE: Capital Project  
BUDGET: \$33,500  
FUNDING SOURCE: Civic Art Funds (1%)  
CONSULTANT: Susan F. Gray & Company  
PROJECT PHASE: Engagement

### **Norwalk Library - Benton Sculpture Conservation**

12350 Imperial Hwy., Norwalk, CA 90650  
DEPARTMENT: Library  
PROJECT TYPE: Collections  
BUDGET: \$2,000  
FUNDING SOURCE: Civic Art Funds (1%)  
ARTIST: Fletcher Benton  
CONSERVATOR: Silverlake Conservation  
PROJECT PHASE: Selection

### **Norwalk Library - Benton Sculpture Donation**

12350 Imperial Hwy., Norwalk, CA 90650  
DEPARTMENT: Library  
PROJECT TYPE: Collections  
PROJECT COST: \$13,571.47  
FUNDING SOURCE: Civic Art Funds (1%)  
ARTIST: Fletcher Benton  
PROJECT PHASE: Completed

### **Norwalk Library - Interior Mural**

12350 Imperial Hwy., Norwalk, CA 90650  
DEPARTMENT: Library  
PROJECT TYPE: Initiative  
BUDGET: \$65,000  
FUNDING SOURCE: LA County Library  
ARTIST: TBD  
PROJECT PHASE: On Hold

### **Norwalk Library - Mayer Tiled Artwork Conservation**

12350 Imperial Hwy., Norwalk, CA 90650  
DEPARTMENT: Library  
PROJECT TYPE: Collections  
BUDGET: \$5,400  
FUNDING SOURCE: Civic Art Funds (1%)  
ARTIST: Ben Mayer  
CONSERVATOR: Silverlake Conservation  
PROJECT PHASE: Selection

### **Rancho Los Amigos - Outpatient Building**

7601 E. Imperial Hwy., Downey, CA 90242  
DEPARTMENT: Health Services  
PROJECT TYPE: Capital Project  
PROJECT COST: \$73,000  
FUNDING SOURCE: Civic Art Funds (1%)  
ARTIST: Hataya Tubtim  
PROJECT PHASE: Completed

### **Rancho Los Amigos - Recuperative Care Center and Residential Treatment Program**

7601 E. Imperial Hwy., Downey, CA 90242  
DEPARTMENTS: Health Services, Mental Health  
PROJECT TYPE: Capital Project  
BUDGET: \$451,324.65  
FUNDING SOURCE: Civic Art Funds (1%)  
ARTIST: Matthew Mazzotta  
PROJECT PHASE: Completed



## FOURTH DISTRICT

### **Rancho Los Amigos - South Campus County Office Building**

7601 E. Imperial Hwy., Downey, CA 90242  
DEPARTMENTS: Internal Services, Probation  
PROJECT TYPE: Capital Project  
BUDGET: \$1,000,000  
FUNDING SOURCE: Civic Art Funds (1%)  
ARTIST: TBD  
PROJECT PHASE: Scoping

### **Restorative Care Villages - Publication**

7601 E. Imperial Hwy., Downey, CA 90242  
DEPARTMENT: Mental Health  
PROJECT TYPE: Initiative  
BUDGET: \$73,800  
FUNDING SOURCE: Civic Art Funds (1%)  
ARTIST: n/a  
PROJECT PHASE: Planning

### **San Pedro Courthouse**

505 S. Centre St., San Pedro, CA 90731  
DEPARTMENT: Chief Executive Office  
PROJECT TYPE: PPP (DDCCP)  
BUDGET: \$920,000  
FUNDING SOURCE: Civic Art Funds (1%)  
ARTIST: TBD  
PROJECT PHASE: Planning

### **San Pedro Courthouse - Community Arts Grant**

505 S. Centre St., San Pedro, CA 90731  
DEPARTMENT: Chief Executive Office  
PROJECT TYPE: PPP (DDCCP)  
BUDGET: \$50,000  
FUNDING SOURCE: Civic Art Funds (1%)  
ARTIST: TBD  
PROJECT PHASE: Planning

### **San Pedro Service Center - Leone Tiled Artwork Conservation**

769 W. 3rd St., San Pedro, CA 90731  
DEPARTMENT: Aging and Disabilities  
PROJECT TYPE: Collections  
PROJECT COST: \$4,028.95  
FUNDING SOURCE: Civic Art Funds (1%)  
ARTIST: Barbara Leone  
CONSERVATOR: RLA Conservation  
PROJECT PHASE: Completed

Total SD4 Projects: 15

## FIFTH DISTRICT

### **Apollo Community Regional Park Restroom Renovation**

4555 W. Avenue G, Lancaster, CA 93536  
DEPARTMENT: Parks and Recreation  
PROJECT TYPE: Capital PProject  
PROJECT COST: \$0  
ARTIST: n/a  
PROJECT PHASE: Canceled

### **Browns Canyon Equestrian**

12080 Browns Canyon Rd., Chatsworth, CA 91311  
DEPARTMENT: Parks and Recreation  
PROJECT TYPE: Capital PProject  
PROJECT COST: \$0  
ARTIST: n/a  
PROJECT PHASE: Canceled

### **Cahuenga Pass — Ford Art Tower**

2580 Cahuenga Blvd. E., Los Angeles, CA 90068  
DEPARTMENT: Parks and Recreation  
PROJECT TYPE: PPP (DDCCP)  
BUDGET: \$350,000  
ARTIST: n/a  
PROJECT PHASE: Project Closeout

### **Charles White Park**

77 Mountain View St., Altadena, CA 91001  
DEPARTMENT: Parks and Recreation  
PROJECT TYPE: Capital Project  
BUDGET: \$473,000  
ARTIST: TBD  
PROJECT PHASE: Planning

### **Del Valle Park — Picnic Area and Shade Structure**

28201 Sloan Canyon Rd., Castaic, CA 91384  
DEPARTMENT: Parks and Recreation  
PROJECT TYPE: Capital Project  
BUDGET: \$0  
ARTIST: n/a  
PROJECT PHASE: Canceled

### **Eaton Canyon Natural Area New Restroom**

1750 N. Altadena Dr., Pasadena, CA 91107  
DEPARTMENT: Parks and Recreation  
PROJECT TYPE: Capital Project  
BUDGET: \$0  
ARTIST: n/a  
PROJECT PHASE: Canceled

# PROJECTS LIST

## FIFTH DISTRICT

### **Everett Martin Park Restroom Replacement**

35548 N. 92nd St. E., Littlerock, CA 93543  
DEPARTMENT: Parks and Recreation  
PROJECT TYPE: Capital Project  
BUDGET: \$0  
ARTIST: n/a  
PROJECT PHASE: Canceled

### **Fire Department — Sobieski Panel Stabilization**

ADDRESS: n/a  
DEPARTMENT: Fire  
PROJECT TYPE: Collections  
PROJECT COST: \$2,860  
FUNDING SOURCES: Civic Art Funds (1%), Los Angeles Fire Department  
ARTIST: Anne-Elizabeth Sobieski  
PROJECT PHASE: Completed

### **Fire 104**

26901 Golden Valley Rd., Santa Clarita, CA 91351  
DEPARTMENT: Fire  
PROJECT TYPE: Capital Project  
PROJECT COST: \$114,000  
FUNDING SOURCES: Civic Art Funds (1%), Los Angeles Fire Department  
ARTIST: Anne-Elizabeth Sobieski  
PROJECT PHASE: Completed

### **Fire Station 143 — Kobayashi Sculpture Relocation**

28580 Hasley Canyon Rd., Castaic, CA 91384  
DEPARTMENT: Fire  
PROJECT TYPE: Collections  
BUDGET: \$0  
ARTIST: Kipp Kobayashi  
PROJECT PHASE: Planning

### **George Lane Skate Park**

5520 W. Ave. L8, Quartz Hill, CA 93536  
DEPARTMENT: Parks and Recreation  
PROJECT TYPE: Capital Project  
PROJECT COST: \$14,000  
ARTISTS: Michael Parker and Todd Ciborowski  
PROJECT PHASE: Completed

### **High Desert Mental Health Urgent Care Center — Art Purchase**

335 E. Ave. I, Lancaster, CA 93535  
DEPARTMENT: Mental Health  
PROJECT TYPE: Capital Project  
BUDGET: \$15,800  
FUNDING SOURCE: Civic Art Funds (1%)  
ARTIST: Michael Waugh  
PROJECT PHASE: Project Closeout

### **High Desert Mental Health Urgent Care Center — Lobby**

335 E. Ave. I, Lancaster, CA 93535  
DEPARTMENT: Mental Health  
PROJECT TYPE: Capital Project  
BUDGET: \$127,700  
FUNDING SOURCE: Civic Art Funds (1%)  
ARTIST: Cheryl Molnar  
PROJECT PHASE: Project Closeout

### **Honor Ranch Development**

Santa Clarita, CA  
DEPARTMENT: Economic Opportunities  
PROJECT TYPE: PPP (DDCCP)  
BUDGET: TBD  
FUNDING SOURCE: Civic Art Funds (1%)  
ARTIST: TBD  
PROJECT PHASE: Scoping

### **John Anson Ford Amphitheatre Scenic Trail**

2580 Cahuenga Blvd. E., Los Angeles, CA 90068  
DEPARTMENT: Parks and Recreation  
PROJECT TYPE: Capital Project  
BUDGET: \$34,300  
FUNDING SOURCE: Civic Art Funds (1%)  
ARTIST: TBD  
PROJECT PHASE: On hold

### **Live Oak Library**

22 W. Live Oak Ave., Arcadia, CA 91007  
DEPARTMENT: Library  
PROJECT TYPE: Capital Project  
BUDGET: \$43,000  
FUNDING SOURCE: Civic Art Funds (1%)  
ARTIST: TBD  
PROJECT PHASE: Scoping

### **Loma Alta Park New Restroom and Restroom Renovation**

3330 N. Lincoln Ave., Altadena, CA 91001  
DEPARTMENT: Parks and Recreation  
PROJECT TYPE: Capital Project  
BUDGET: \$0  
ARTIST: n/a  
PROJECT PHASE: Canceled

### **North Hollywood Medical Office Building**

5300 W. Tujunga Blvd., North Hollywood, CA 91601  
DEPARTMENTS: Health Services, Public Health, Mental Health  
PROJECT TYPE: Capital Project  
BUDGET: TBD  
FUNDING SOURCE: Civic Art Funds (1%)  
ARTIST: TBD  
PROJECT PHASE: Scoping

# PROJECTS LIST

## COUNTYWIDE

### **Restorative Care Villages — Publication**

335 E. Ave. I, Lancaster, CA 93535  
DEPARTMENT: Mental Health  
PROJECT TYPE: Initiative  
BUDGET: \$73,800  
FUNDING SOURCE: Civic Art Funds (1%)  
ARTIST: n/a  
PROJECT PHASE: Planning

### **Temple City Library**

5939 Golden West Ave., Temple City, CA 91780  
DEPARTMENT: Library  
PROJECT TYPE: Capital Project  
BUDGET: \$50,000  
FUNDING SOURCE: Civic Art Funds (1%)  
ARTIST: TBD  
PROJECT PHASE: Scoping

### **Veteran's Memorial Park Renovation Project**

13000 Sayre St., Sylmar, CA 91342  
DEPARTMENT: Parks and Recreation  
PROJECT TYPE: Capital Project  
BUDGET: \$0  
ARTIST: n/a  
PROJECT PHASE: Canceled

Total SD5 Projects: 21

## COUNTYWIDE

### **19th Amendment Centennial Artwork Competition**

DEPARTMENT: Chief Executive Office  
PROJECT TYPE: Initiative  
BUDGET: \$60,000  
FUNDING SOURCE: Chief Executive Office  
ARTISTS: Andrea Monroe, Amy Smith, Clarence J. Williams III, Laura Vazquez Rodriguez, Moses X Ball, Ragni Agarwal  
PROJECT PHASE: Project Closeout

### **Accessory Dwelling Unit Directive II Working Group**

DEPARTMENTS: Regional Planning, Chief Executive Office  
PROJECT TYPE: Initiative  
BUDGET: \$0  
ARTIST: n/a  
PROJECT PHASE: Ongoing

### **Civic Art Collections Demographics Study**

DEPARTMENT: Arts and Culture  
PROJECT TYPE: Initiative  
BUDGET: \$46,600  
FUNDING SOURCE: Civic Art Operating Funds  
ARTIST: n/a  
PROJECT PHASE: Fabrication

### **Countywide Civic Art Baseline Inventory**

DEPARTMENT: Arts and Culture  
PROJECT TYPE: Collections  
BUDGET: \$240,000  
FUNDING SOURCE: LA County General Fund  
ARTISTS: Various  
PROJECT PHASE: On Hold

### **Countywide Community Engagement Planning Committee**

DEPARTMENT: Public Works  
PROJECT TYPE: Initiative  
BUDGET: \$0  
ARTIST: n/a  
PROJECT PHASE: Ongoing

### **Courthouse Artwork State Ownership Project**

DEPARTMENT: Arts and Culture  
PROJECT TYPE: Collections  
BUDGET: \$0  
ARTISTS: Various  
PROJECT PHASE: Planning

### **Health Departments Artist Roster**

DEPARTMENTS: Health Services, Mental Health, Public Health  
PROJECT TYPE: Initiative  
PROJECT COST: \$5,408.25  
FUNDING SOURCE: Civic Art Operating Funds  
ARTIST: n/a  
PROJECT PHASE: Completed

### **Illuminate LA: Collective Memory Installation — Grand Park**

200 N. Grand Ave., Los Angeles, CA 90012  
DEPARTMENT: Arts and Culture  
PROJECT TYPE: Initiative  
PROJECT COST: \$150,700  
FUNDING SOURCES: Department of Arts and Culture, Civic Art Operating Funds  
ARTISTS: Various  
PROJECT PHASE: Closeout

# PROJECTS LIST

PROJECTS LIST

## COUNTYWIDE

### **Illuminate LA: Digital Documentation Project**

DEPARTMENT: Arts and Culture  
PROJECT TYPE: Initiative  
PROJECT COST: \$44,800  
FUNDING SOURCES: Department of Arts and Culture,  
Civic Art Operating Funds  
ARTIST: TBD  
PROJECT PHASE: Planning

### **Illuminate LA: Programming — Grand Park**

DEPARTMENT: Arts and Culture  
PROJECT TYPE: Initiative  
PROJECT COST: \$49,300  
FUNDING SOURCES: Department of Arts and Culture,  
Civic Art Operating Funds  
CONSULTANT: Anuradha Vikram  
ARTISTS: Alan Nakagawa, Carmen Argote, Isaac  
Michael Ybarra, Maryam Hosseinzadeh, Sebastian  
Hernandez  
PROJECT PHASE: Project Closeout

### **Interdepartmental Healthy Design Workgroup**

DEPARTMENT: Public Health  
PROJECT TYPE: Initiative  
BUDGET: \$0  
ARTIST: n/a  
PROJECT PHASE: Completed

### **Los Angeles River Master Plan**

DEPARTMENT: Public Works  
PROJECT TYPE: Initiative  
BUDGET: \$0  
ARTIST: n/a  
PROJECT PHASE: Ongoing

### **Metro Technical Advisory Committee (MTAC)**

DEPARTMENT: Regional Planning  
PROJECT TYPE: Initiative  
BUDGET: \$0  
ARTIST: n/a  
PROJECT PHASE: Ongoing

### **Mural Ordinance**

DEPARTMENT: Arts and Culture  
PROJECT TYPE: Initiative  
BUDGET: \$50,000  
FUNDING SOURCE: Department of Regional Planning  
ARTIST: n/a  
PROJECT PHASE: Planning

### **OurCounty Sustainability Plan**

DEPARTMENT: Chief Executive Office  
PROJECT TYPE: Initiative  
BUDGET: \$0  
FUNDING SOURCE: Department of Regional Planning  
ARTIST: n/a  
PROJECT PHASE: Ongoing

### **Public Artists in Development (PAiD) Program**

DEPARTMENT: Arts and Culture  
PROJECT TYPE: Initiative  
BUDGET: \$1,750,000  
FUNDING SOURCE: Andrew W. Mellon Foundation  
Grant  
CONSULTANT: Dyson & Womack  
ARTISTS: TBD  
PROJECT PHASE: Planning

### **The Los Angeles County Zero Waste Plan**

DEPARTMENT: Public Works  
PROJECT TYPE: Initiative  
BUDGET: \$0  
ARTISTS: n/a  
PROJECT PHASE: Ongoing

Total Countywide Projects: 17

