

2025 Wind and Wildfires: Impact on Artists and Arts Nonprofits

Cultural Resources Workgroup
March 25, 2025

Measuring impact requires triangulating across multiple data sources

Data sources incorporated into our analysis

Department of Arts and Culture

- Rapid Impact Assessment survey, in partnership with National Coalition for Arts Preparedness and Emergency Response (NCAPER) and the Foundation for Advancement in Conservation
- Administrative data

Smithsonian Rapid Response Reports

- Created by Smithsonian Cultural Rescue Initiative
- Primarily used open-source locational data for cultural heritage sites

Other LA County organizations

- Discipline-specific surveys
- Member surveys
- Conservator survey

Types of indicators: examples

Scale of impact

Example: LA Arts Community Fire Relief Fund received 2,000 eligible applications from artists impacted by the wind and wildfires.

Source: Getty News

Direct impacts

Example: Among artists surveyed, by 57 percent experienced physical damage to their studio or workplace.

Source: LA County Arts & Culture Assessment Brief #4

Indirect impacts

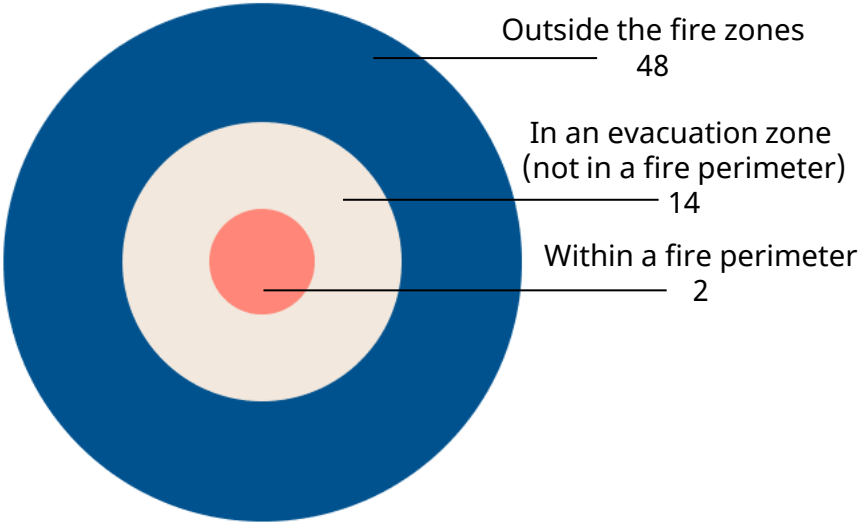
Example: Among arts nonprofits surveyed, 69 percent lost income due to business interruption.

Source: LA County Arts & Culture Assessment Brief #4

Needs differ by geography

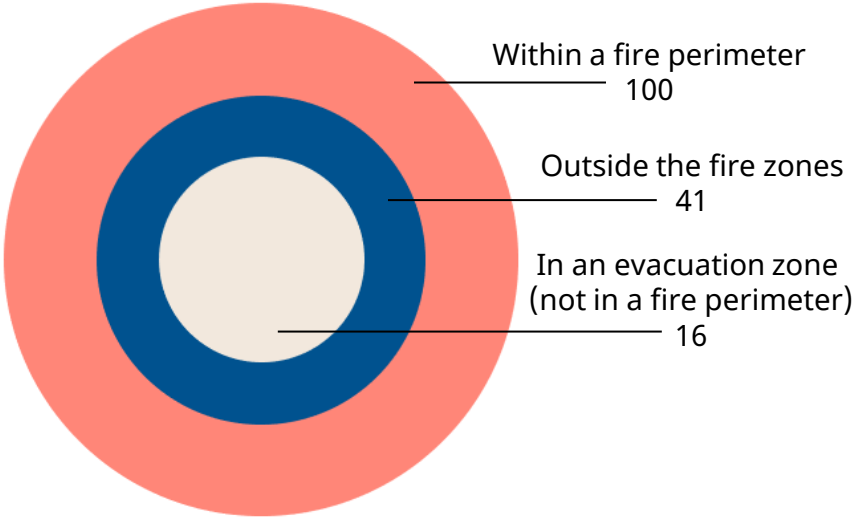
We are hearing from more artists who had homes and workplaces within fire perimeters and evacuation zones, and from more arts organizations located outside the zones. All report wildfire impacts and needs.

Arts organizations and institutions locations¹



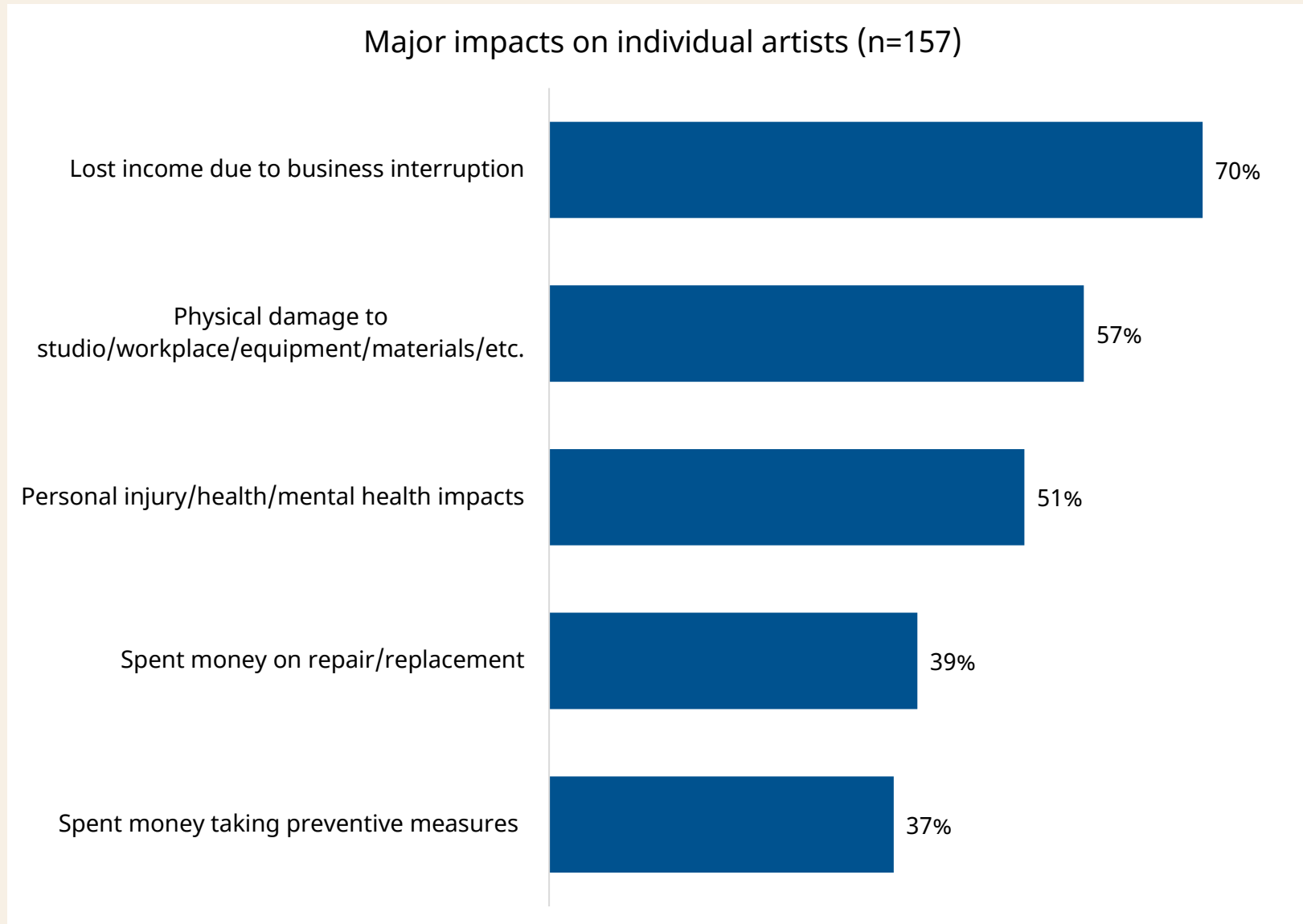
¹based on office or business addresses

Individual artist locations²

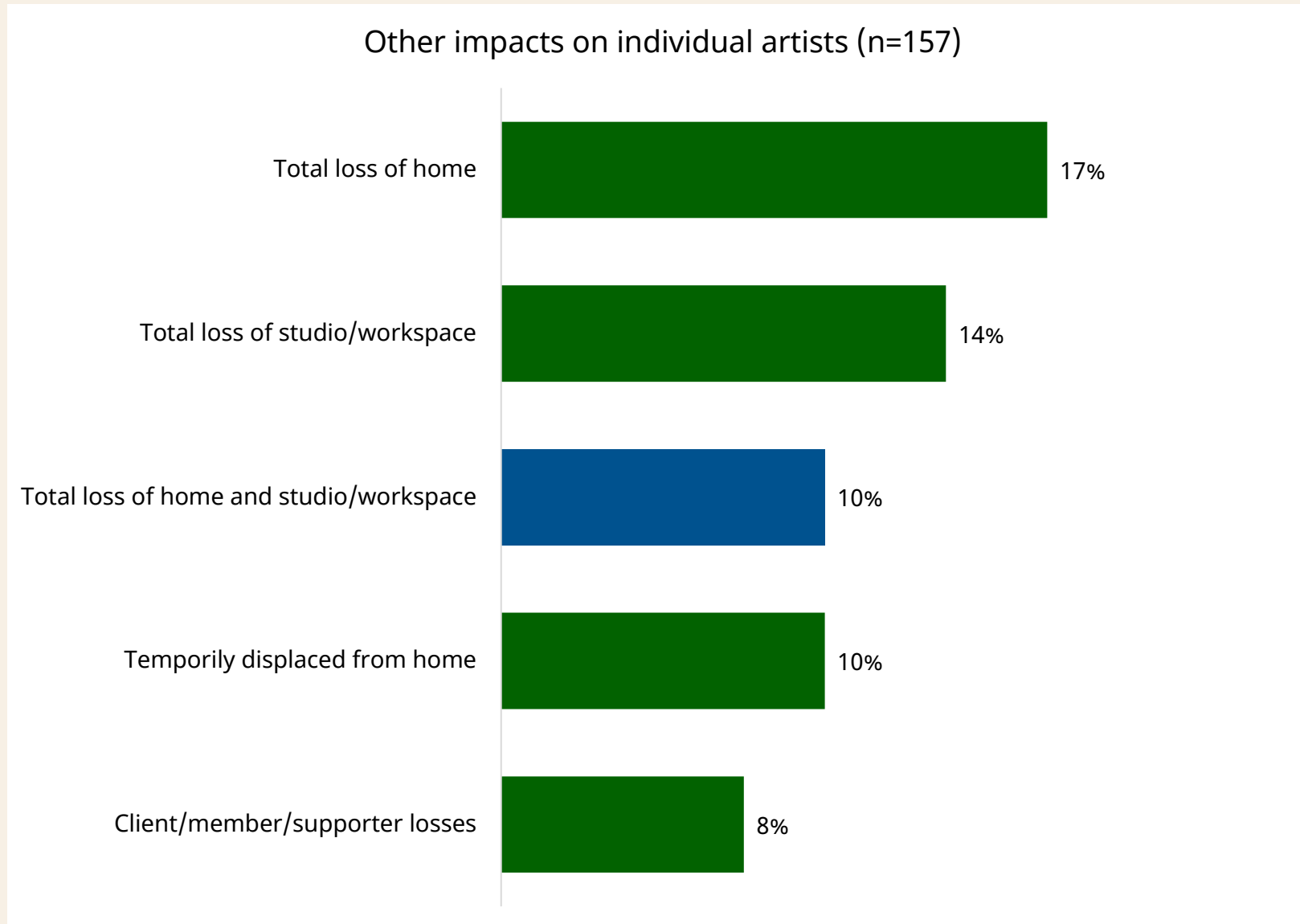


²based on residential zip codes

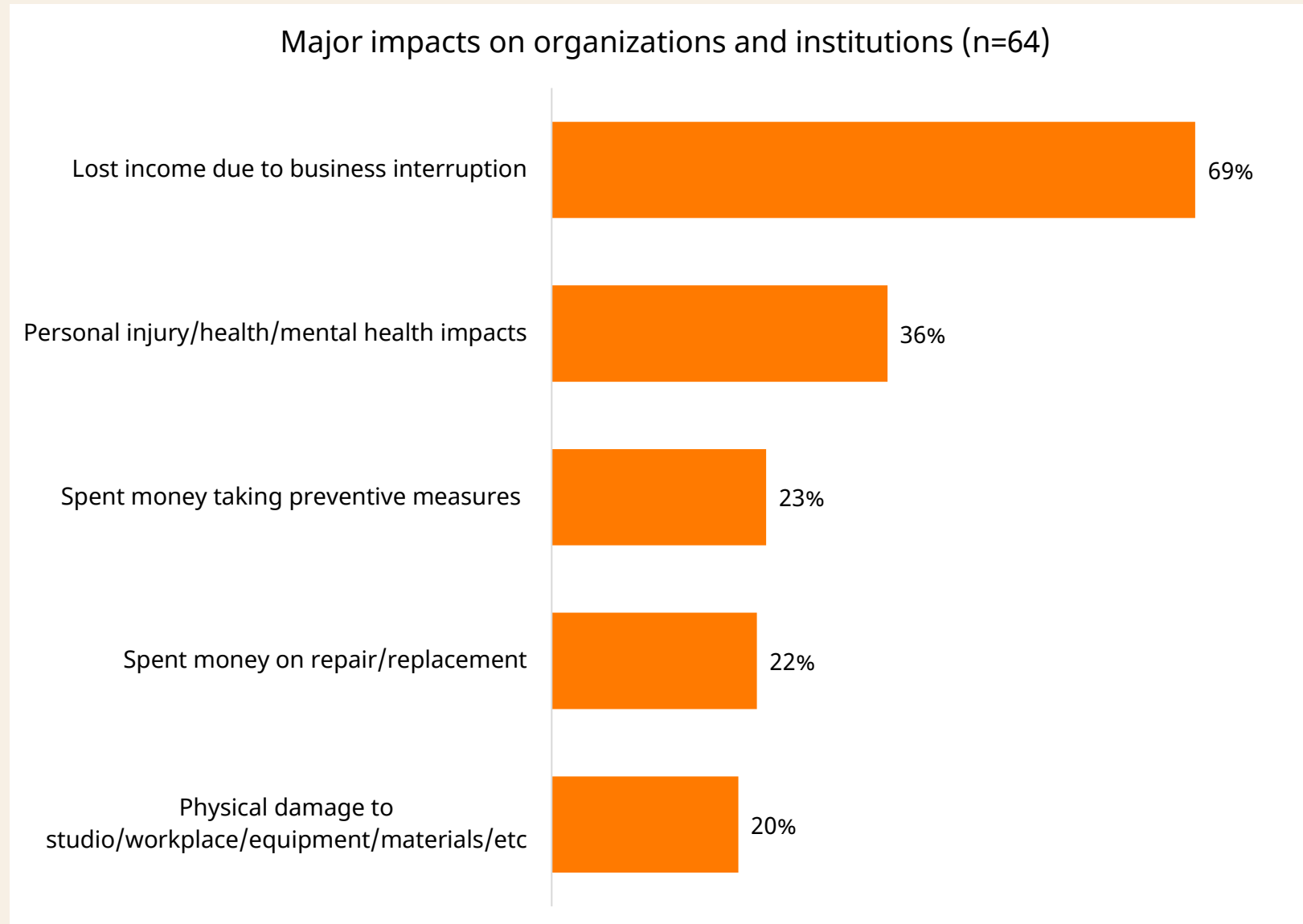
Lost income was the greatest impact on individual artists



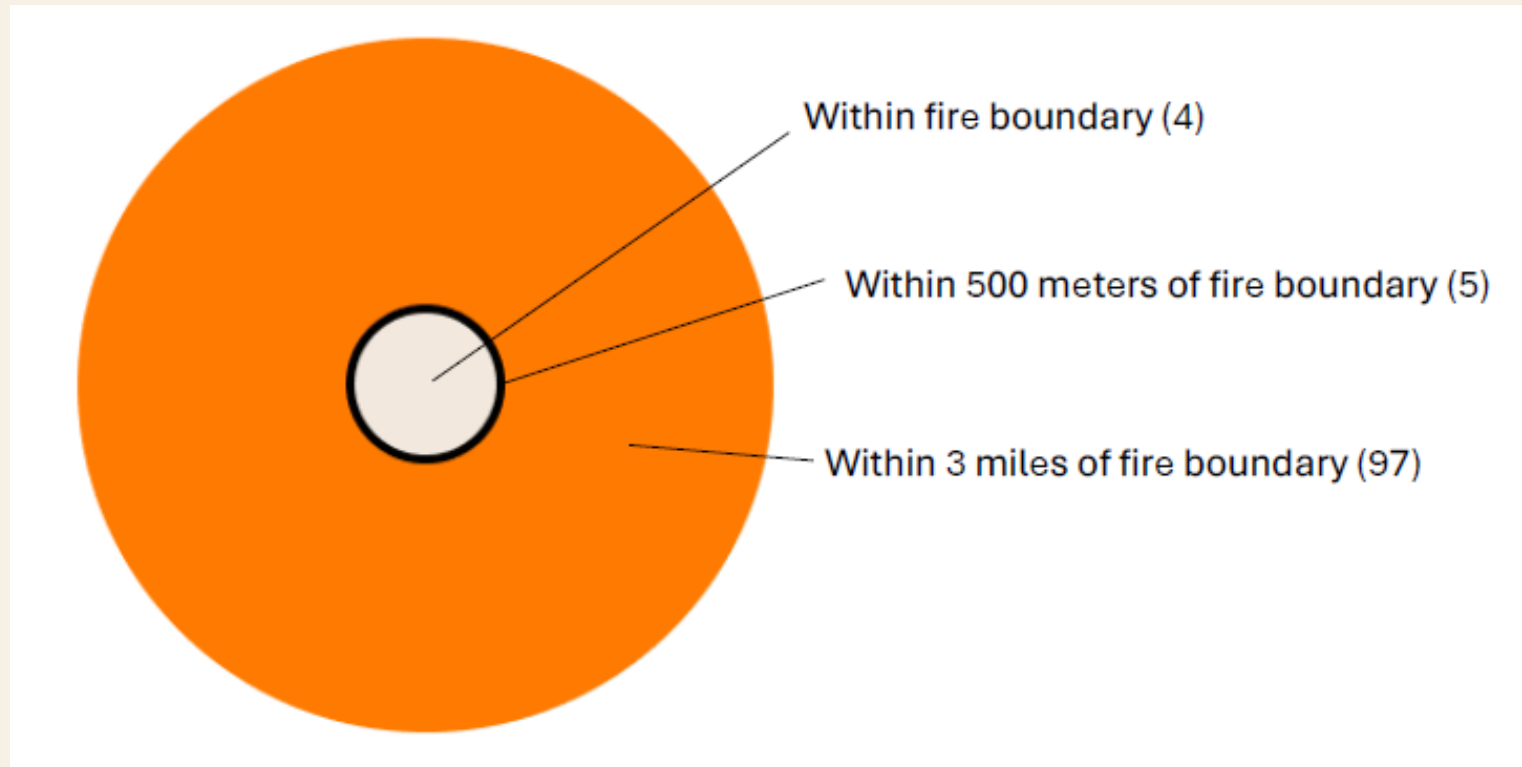
Most artists who lost homes also lost their workplace, and vice versa



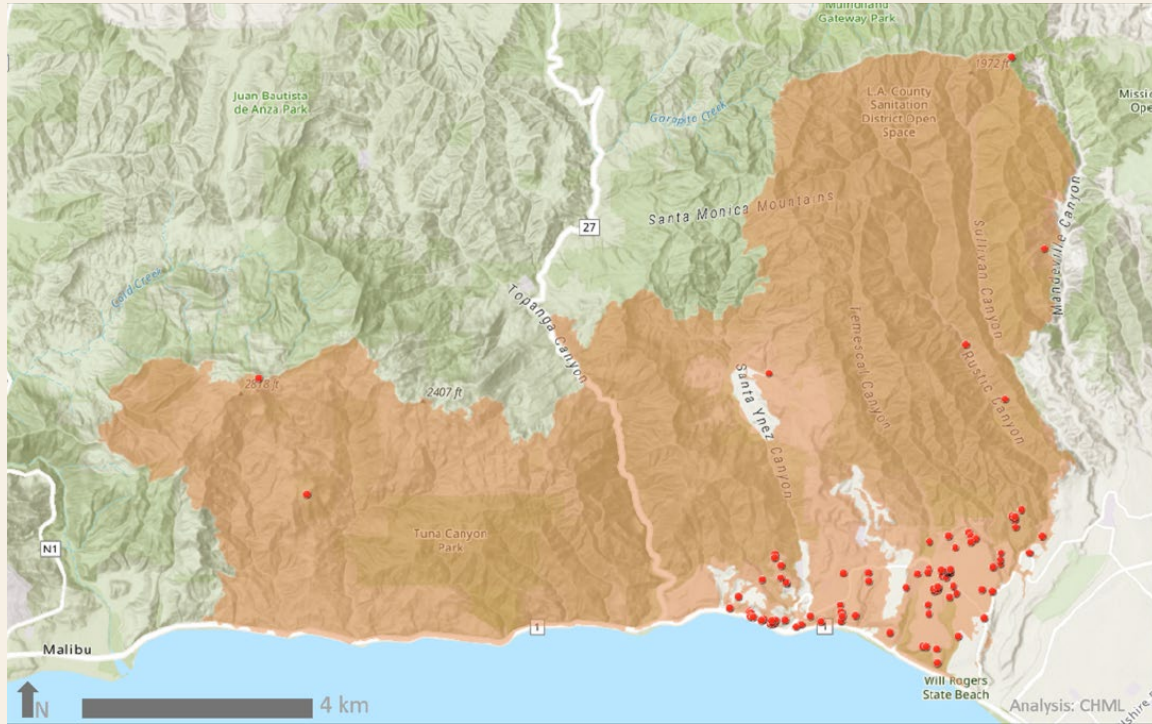
Almost the same share of arts organizations and institutions lost income



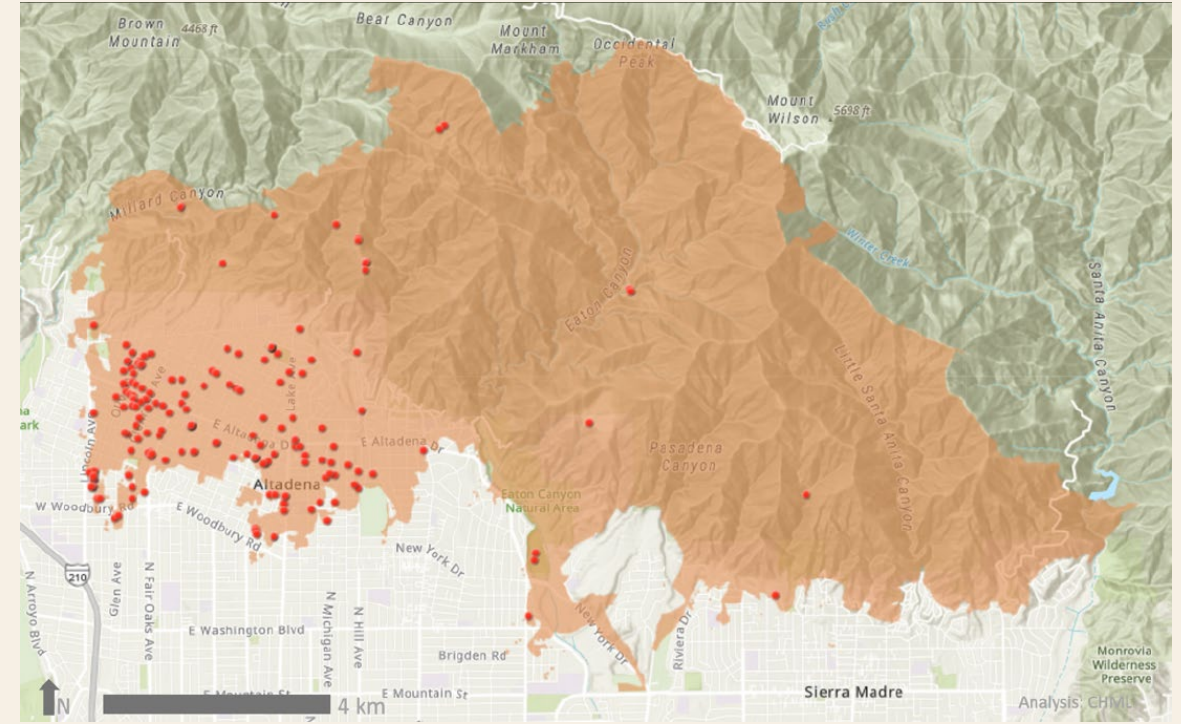
LA County arts and culture nonprofit grantees: Headquarters by proximity to fires



Smithsonian Rapid Response Reports: Potential impacts to cultural heritage



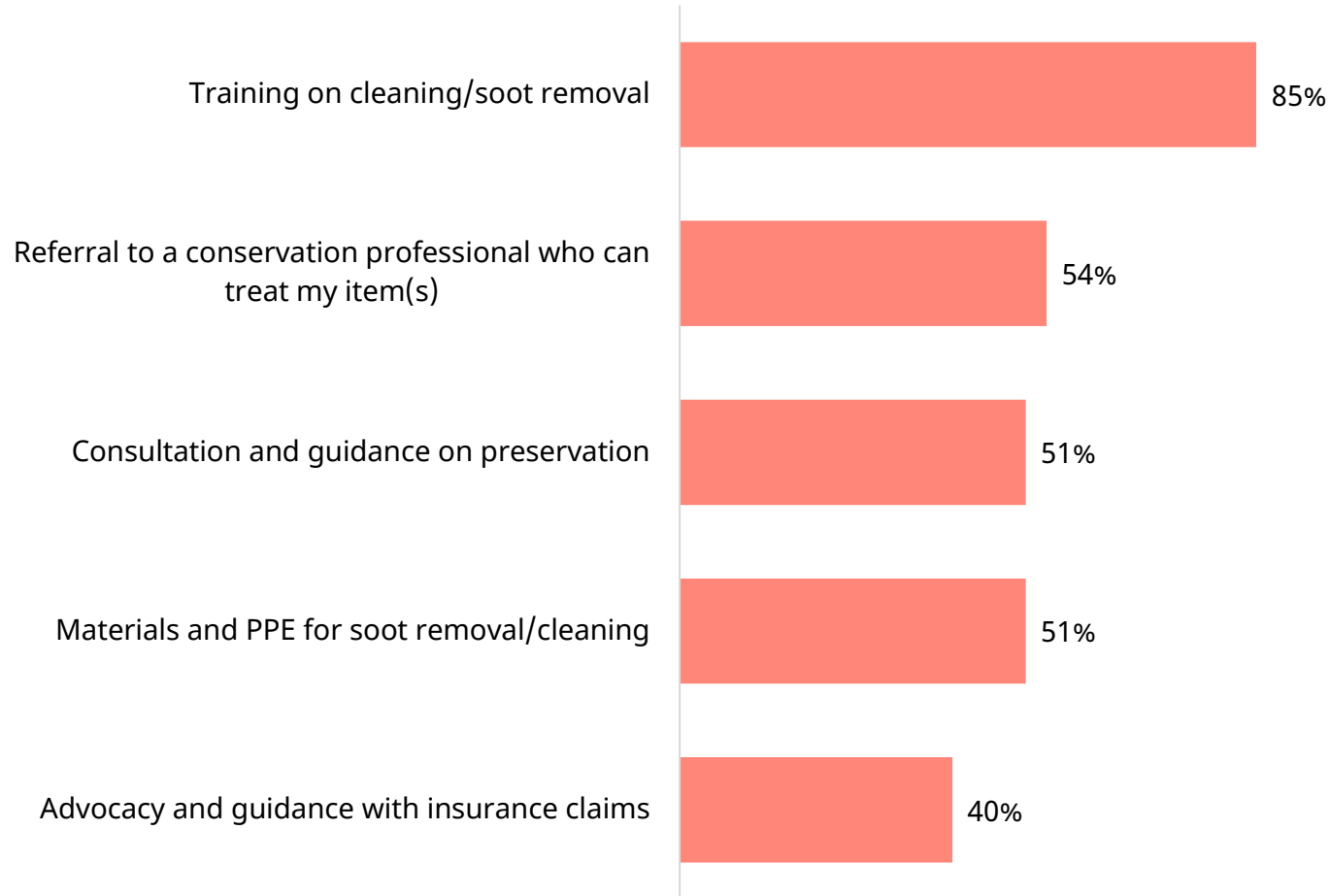
Palisades: 83 cultural heritage sites



Eaton: 189 cultural heritage sites

Art Recovery LA survey as of March 18

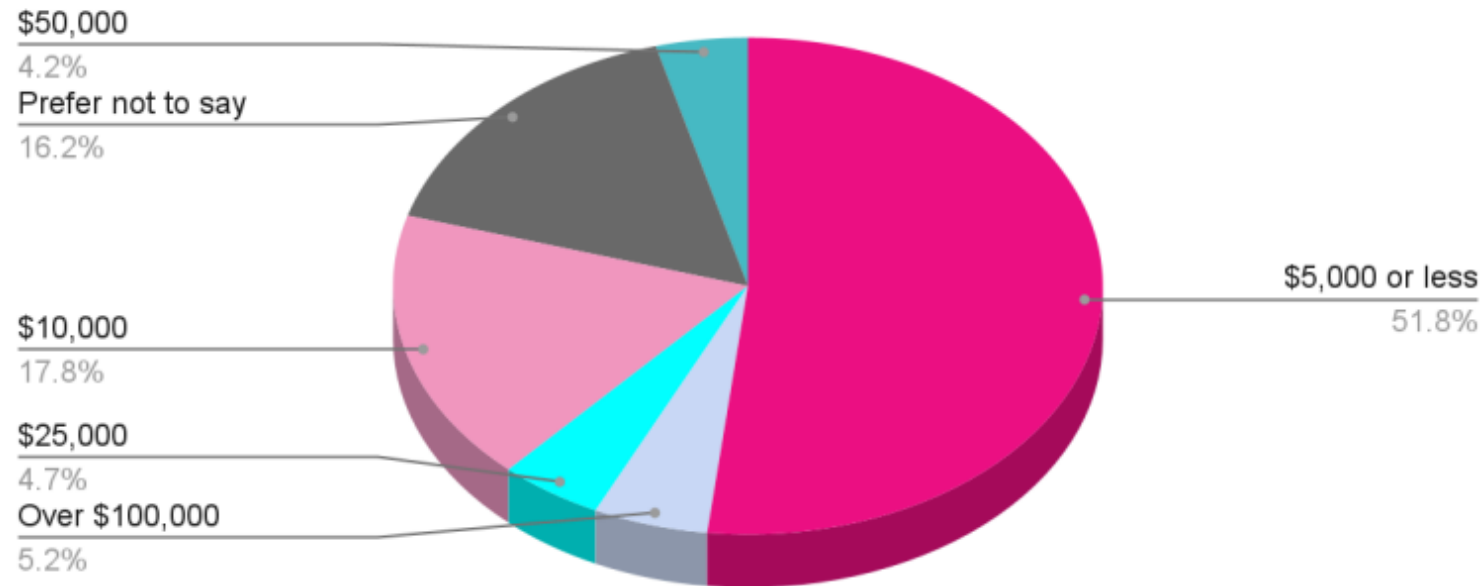
Top five supports needed (n=65)



“Is it safe to keep items made of wood, to keep papers, photographs, special clothing, metal buttons, jewelry, special, large, wooden jewelry box furniture that is lined with velvet like fabric?”

LA Performance Practice survey as of February 6

Please estimate the financial impact of the wildfires on you or your work



"I can't even pay rent this month [...] I'm scrambling to find some type of work to not get evicted this month."

Theatre Commons LA as of January 30

Two theatres burned down:

- Theatre Palisades
- Public Display of Altadena

Four additional theatres damaged:

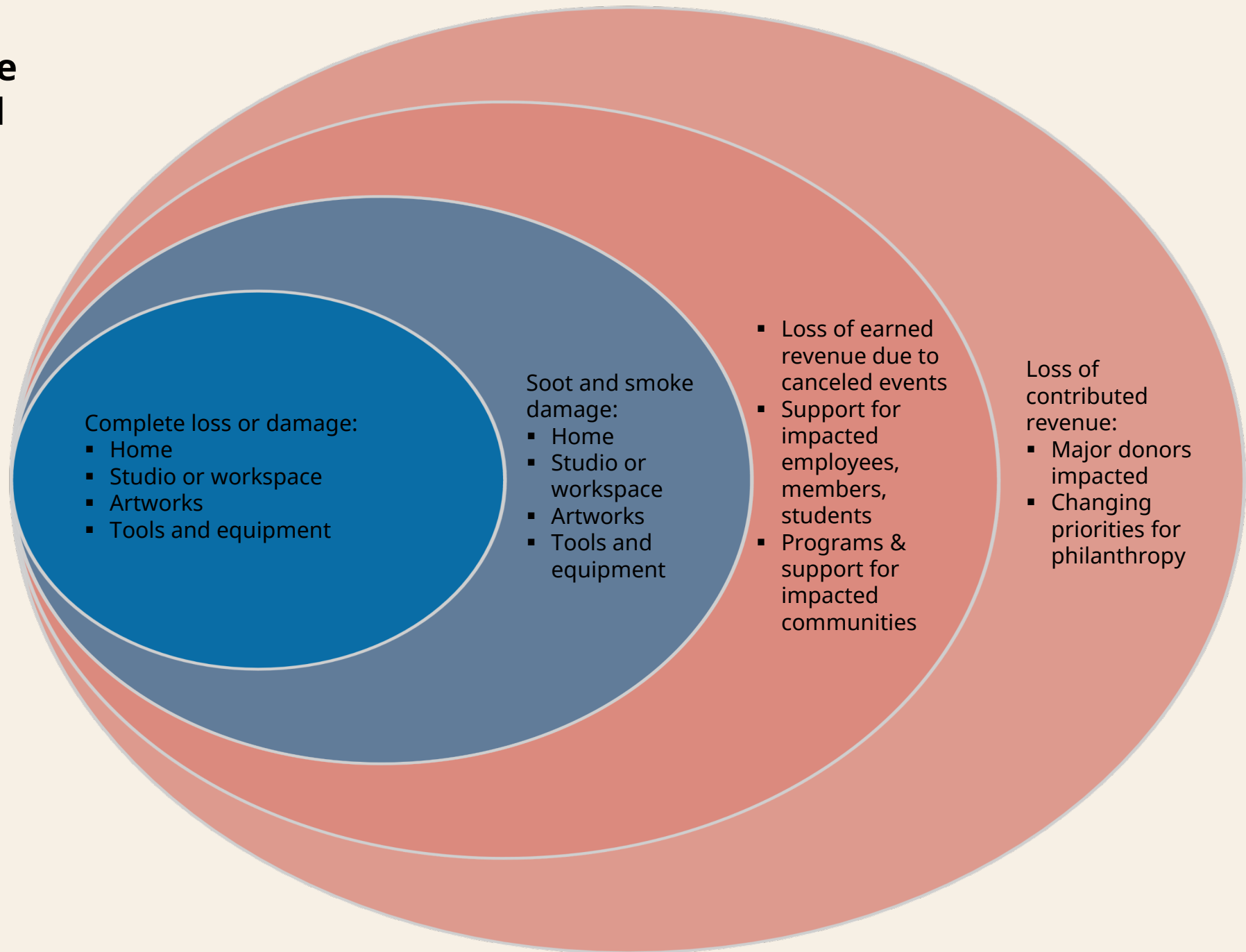
- Pasadena Playhouse (wind damage)
- The Group Rep (wind damage)
- Lineage Performing Arts (smoke damage)
- Boston Court (smoke damage)

At least 10 theatres had to cancel shows

Top short-term challenges:

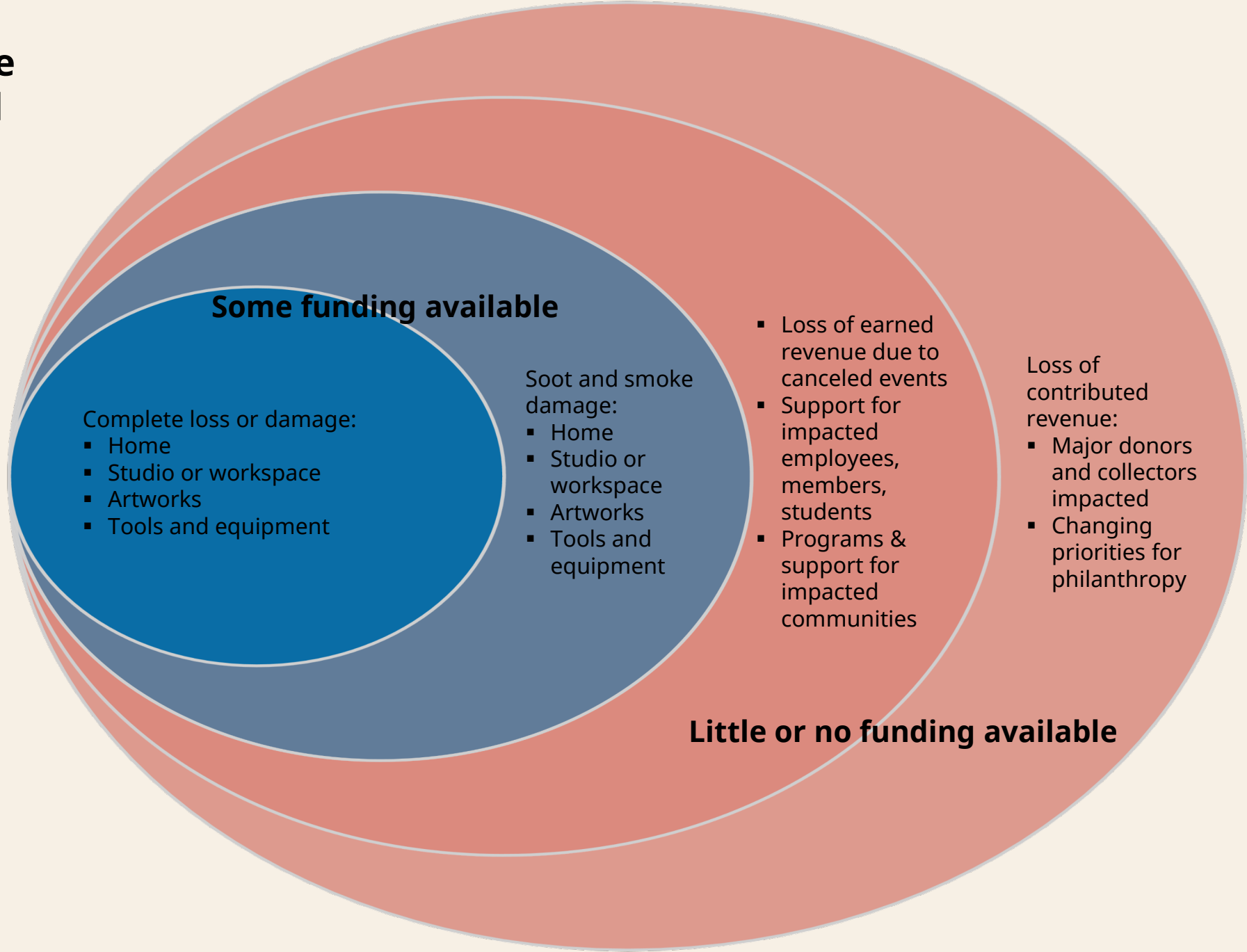
1. Lost revenue from cancelled shows or classes
2. Audience retention/recruitment in changing communities
3. Fundraising and impact on long-term financials on current donors and ticket buyers
4. Rehearsal delays and future show impact
5. Staff bandwidth as we navigate another crisis

Financial ripple effects beyond the fire perimeter and evacuation zones



Financial ripple effects beyond the fire perimeter and evacuation zones:

Funding availability





More information:

lacountyarts.org/experiences/arts-and-culture-digital-resource-center/wildfire-impact-reporting

Bronwyn Mauldin
Director of Research and Evaluation
bmauldin@arts.lacounty.gov