

2025 Wind and Wildfires: Impact on Artists and Arts Nonprofits

LA Arts Funders Meeting
June 2025

Measuring impact requires triangulating across multiple data sources

Data sources incorporated into our analysis

Smithsonian Rapid Response Reports

- Created by Smithsonian Cultural Rescue Initiative
- Primarily used open-source locational data for cultural heritage sites

Early arts service organization surveys

- Discipline-specific surveys
- Member surveys
- Conservator survey

Department of Arts and Culture

- Administrative data
- Rapid Impact Assessment survey, in partnership with National Coalition for Arts Preparedness and Emergency Response (NCAPER) and the Foundation for Advancement in Conservation

Types of indicators: examples

Scale of impact

Example: LA Arts Community Fire Relief Fund received 2,000 eligible applications from artists impacted by the wind and wildfires.

Source: Getty News

Direct impacts

Example: Among artists surveyed, by 57 percent experienced physical damage to their studio or workplace.

Source: LA County Arts & Culture Assessment Brief #5

Indirect impacts

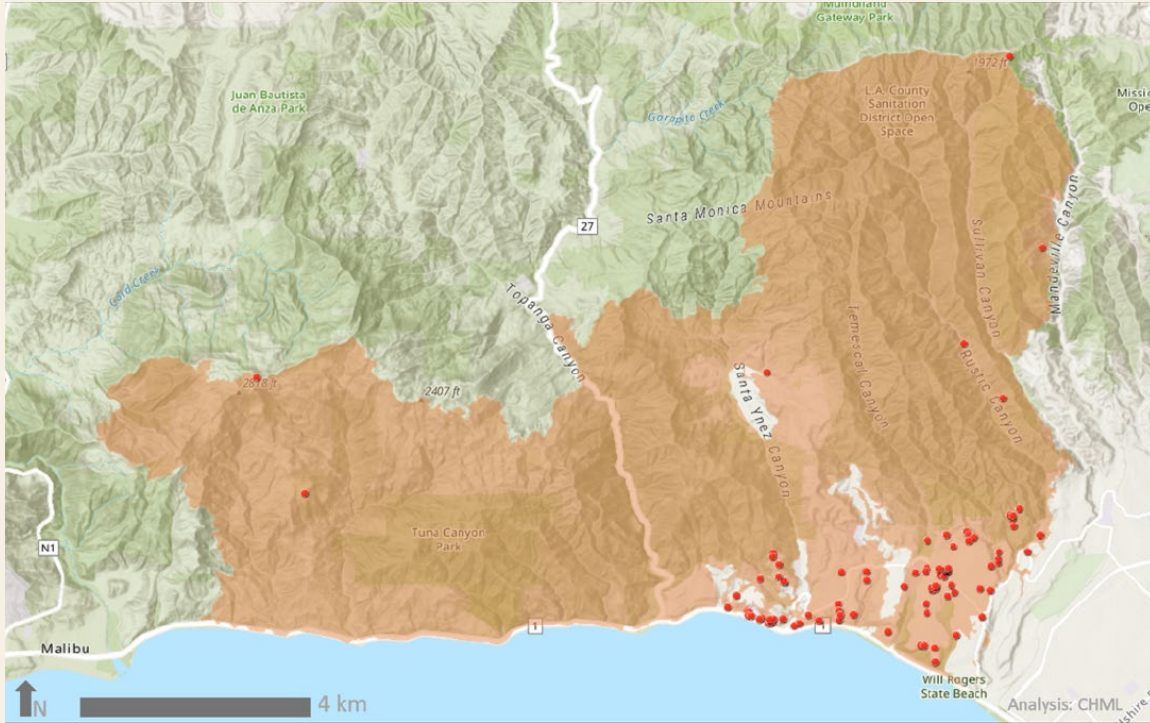
Example: Among arts nonprofits surveyed, 69 percent lost income due to business interruption.

Source: LA County Arts & Culture Assessment Brief #5

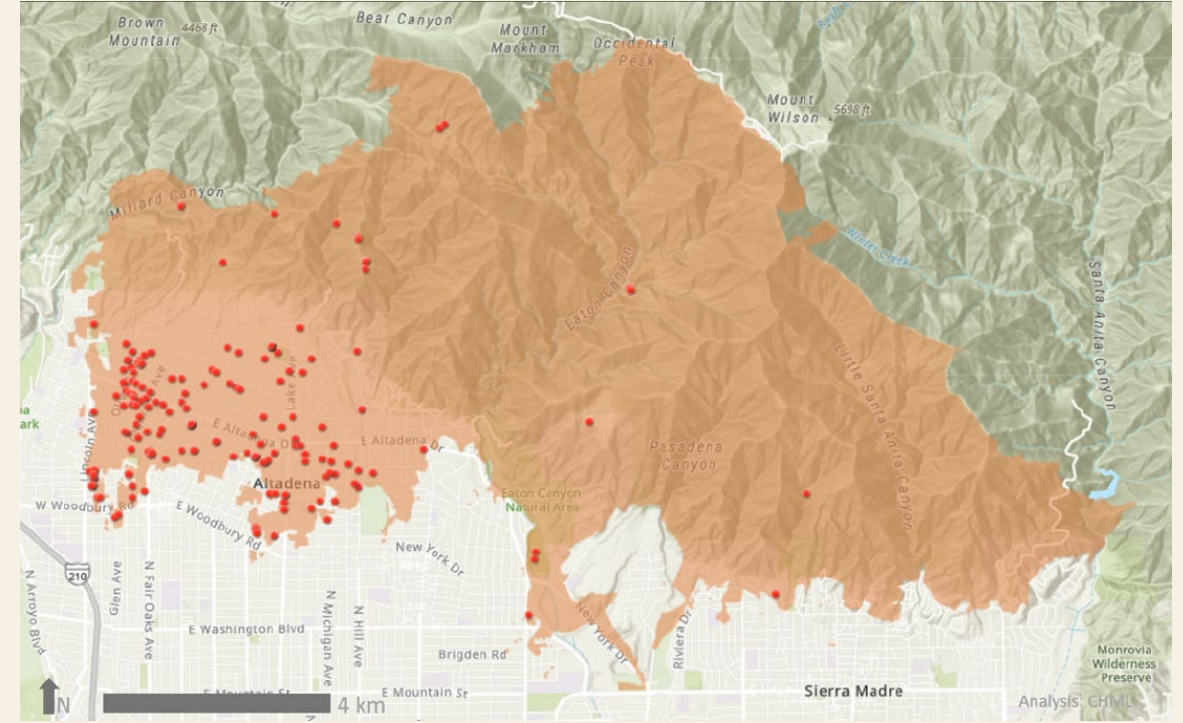
Smithsonian Rapid Response Reports

- Created by Smithsonian Cultural Rescue Initiative
- Primarily used open-source locational data for cultural heritage sites

Smithsonian Rapid Response Reports: Potential impacts to cultural heritage



Palisades: 83 cultural heritage sites



Eaton: 189 cultural heritage sites

Early arts service organization surveys

- Discipline-specific surveys
- Member surveys
- Conservator survey

Theatre Commons LA as of January 30

Two theatres burned down:

- Theatre Palisades
- Public Display of Altadena

Four additional theatres damaged:

- Pasadena Playhouse (wind damage)
- The Group Rep (wind damage)
- Lineage Performing Arts (smoke damage)
- Boston Court (smoke damage)

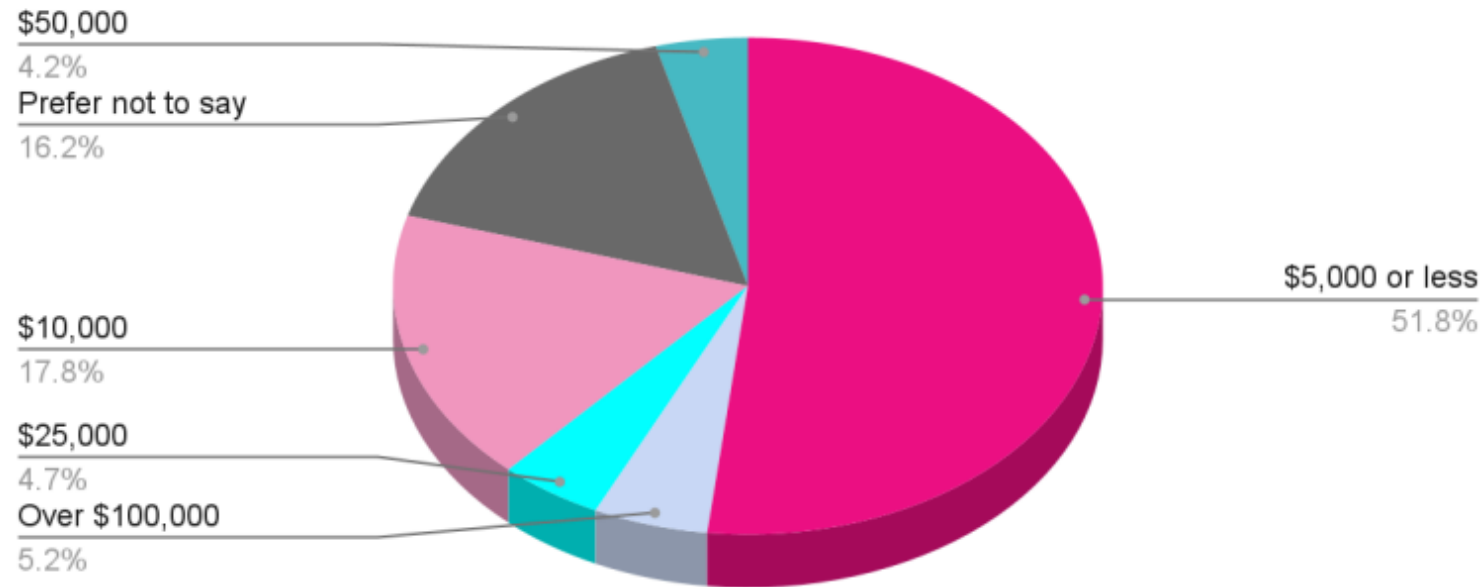
At least 10 theatres had to cancel shows

Top short-term challenges:

1. Lost revenue from cancelled shows or classes
2. Audience retention/recruitment in changing communities
3. Fundraising and impact on long-term financials on current donors and ticket buyers
4. Rehearsal delays and future show impact
5. Staff bandwidth as we navigate another crisis

LA Performance Practice survey as of February 6

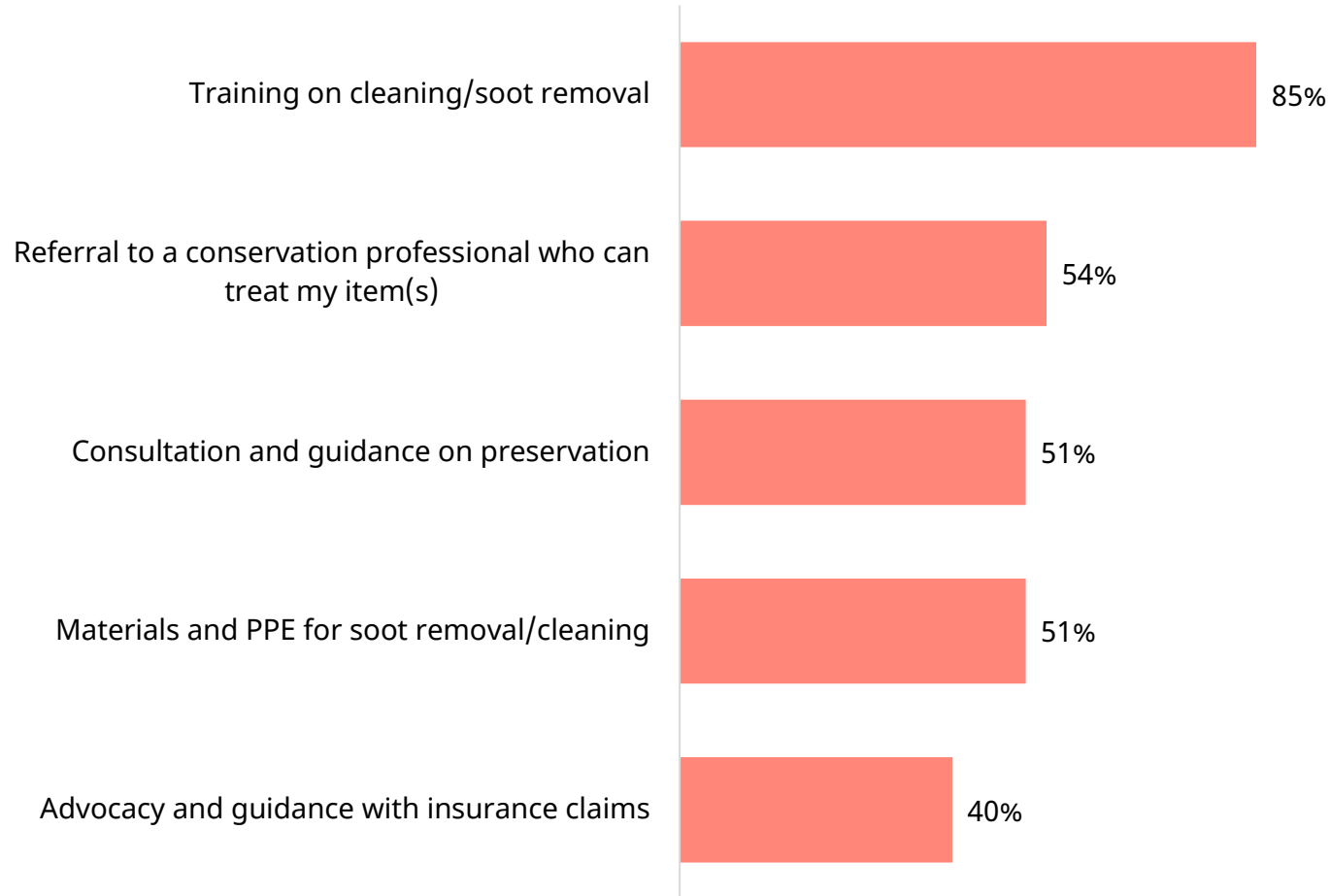
Please estimate the financial impact of the wildfires on you or your work



"I can't even pay rent this month [...] I'm scrambling to find some type of work to not get evicted this month."

Art Recovery LA survey as of March 18

Top five supports needed (n=65)

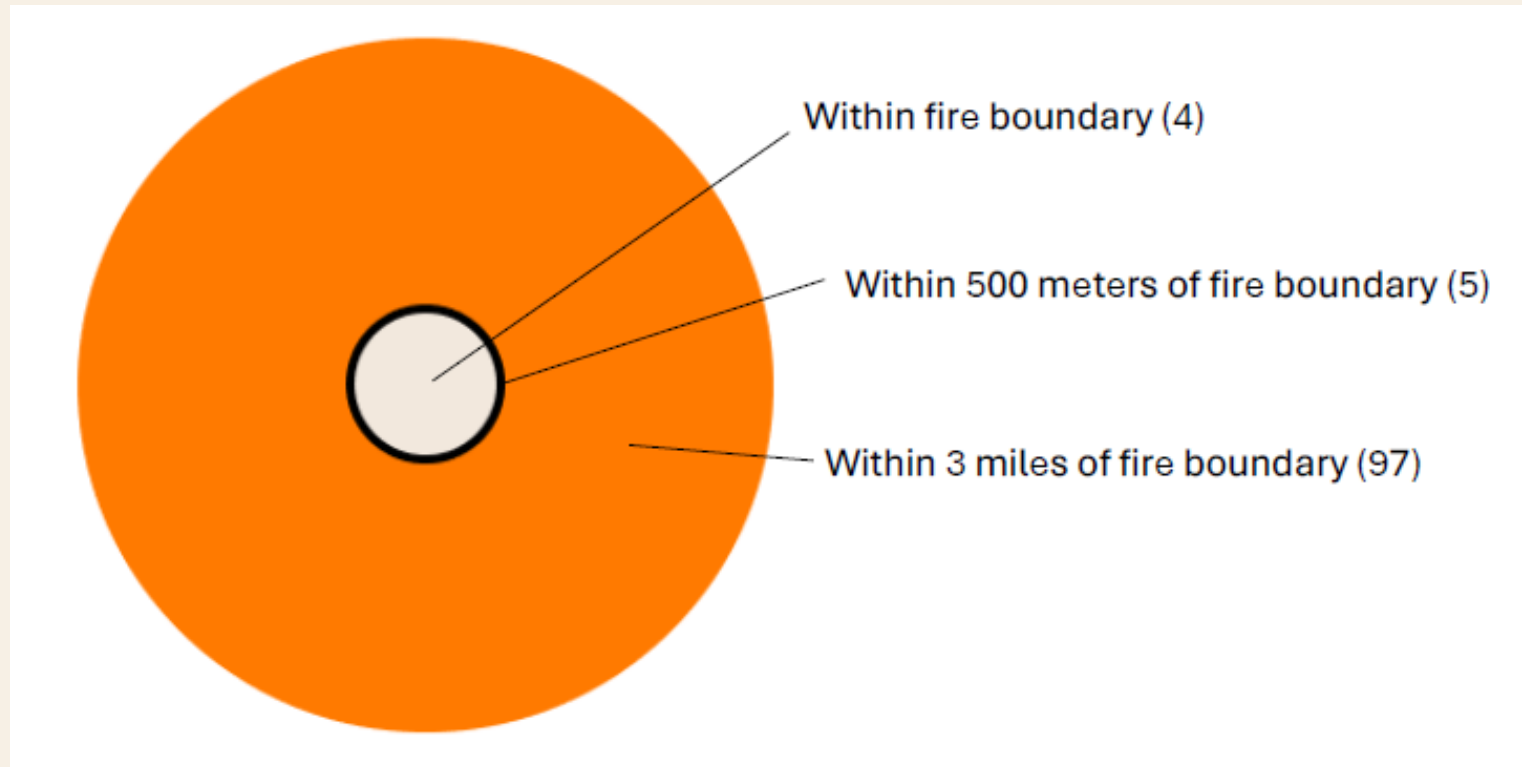


“Is it safe to keep items made of wood, to keep papers, photographs, special clothing, metal buttons, jewelry, special, large, wooden jewelry box furniture that is lined with velvet like fabric?”

Department of Arts and Culture

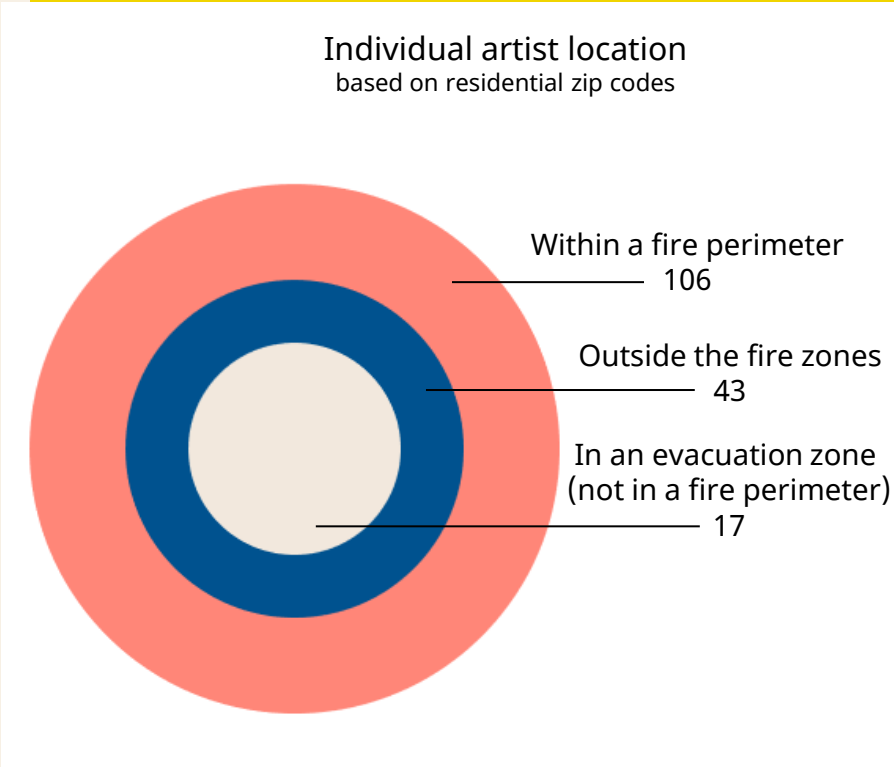
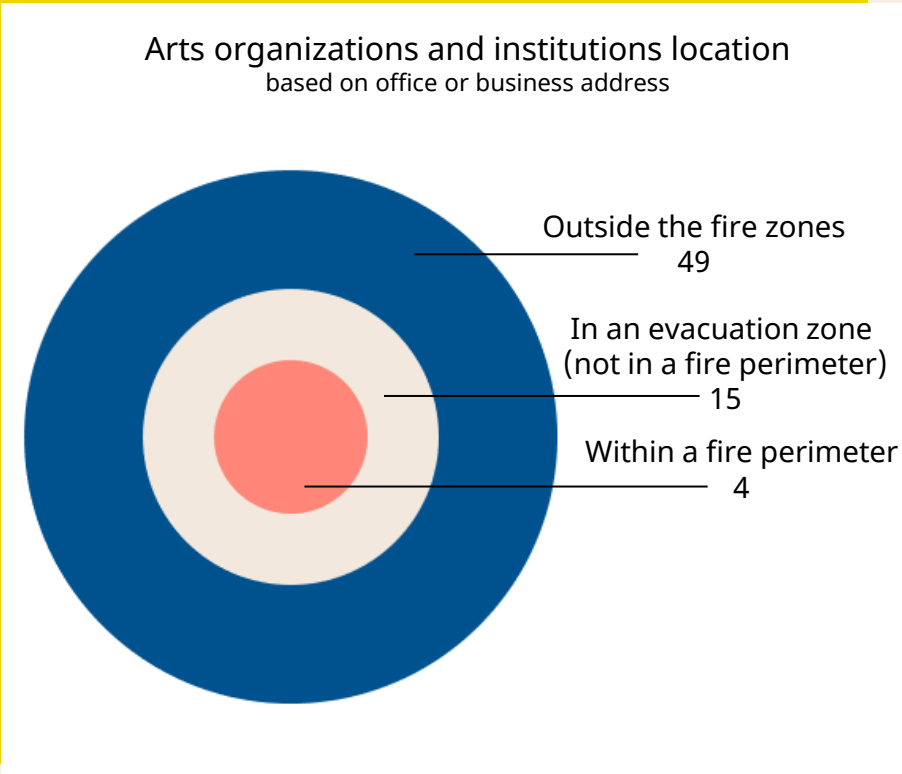
- Administrative data
- Rapid Impact Assessment survey, in partnership with National Coalition for Arts Preparedness and Emergency Response (NCAPER) and the Foundation for Advancement in Conservation

LA County arts and culture nonprofit grantees: Headquarters by proximity to the wildfires

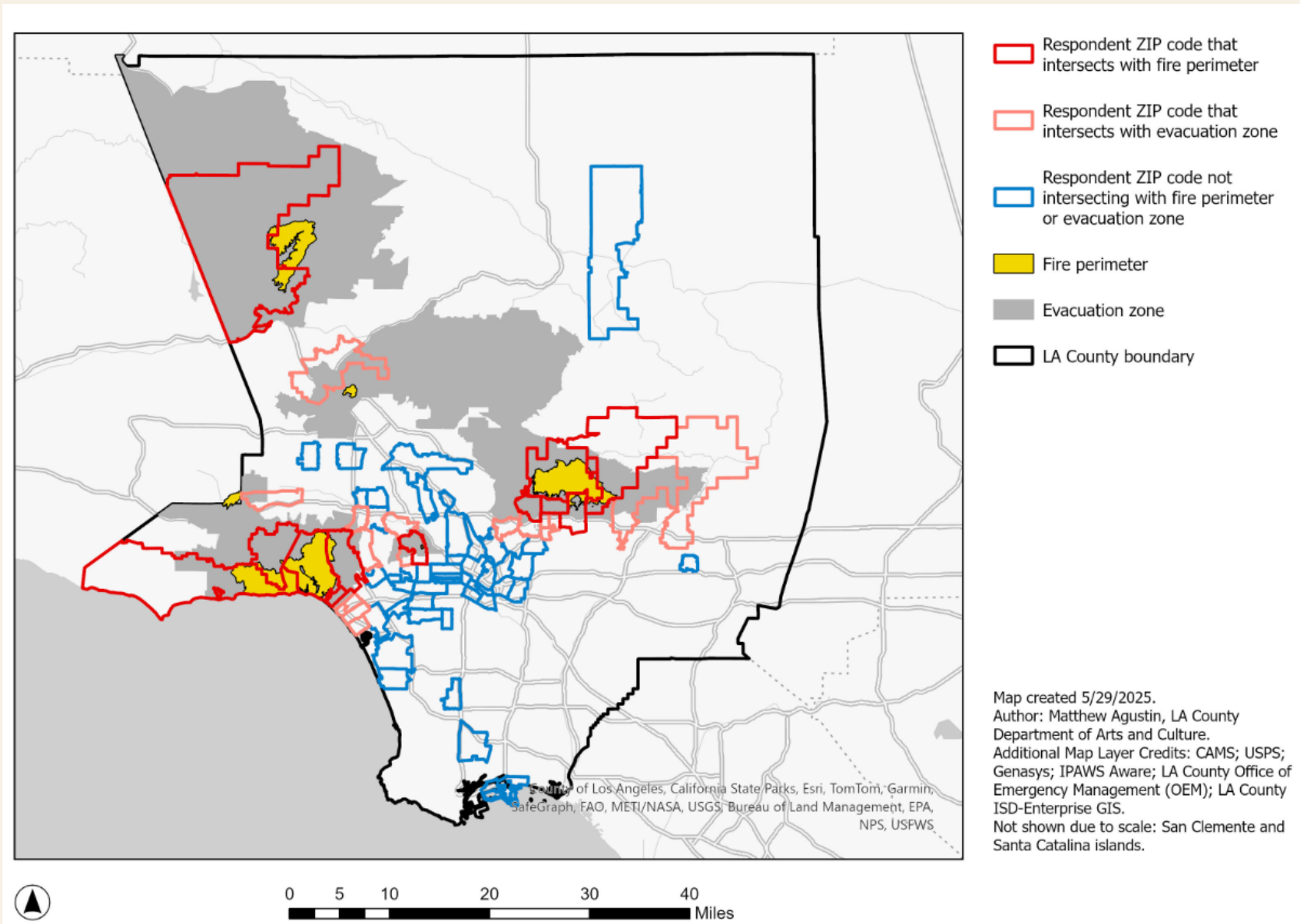


NCAPER assessment survey findings

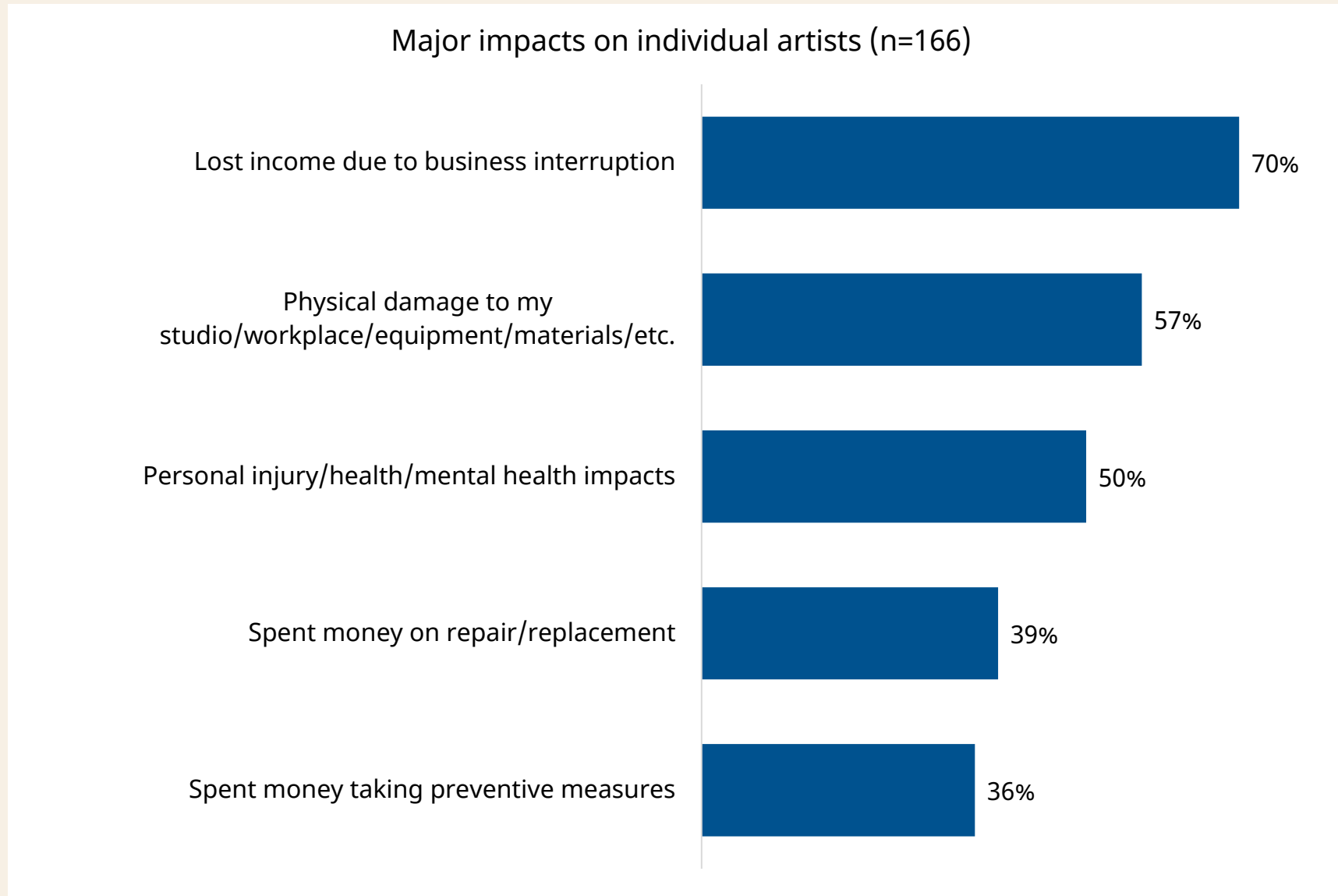
We heard from more artists who had homes and workplaces within fire perimeters and evacuation zones, and from more arts organizations located outside the zones. All report wildfire impacts and needs.



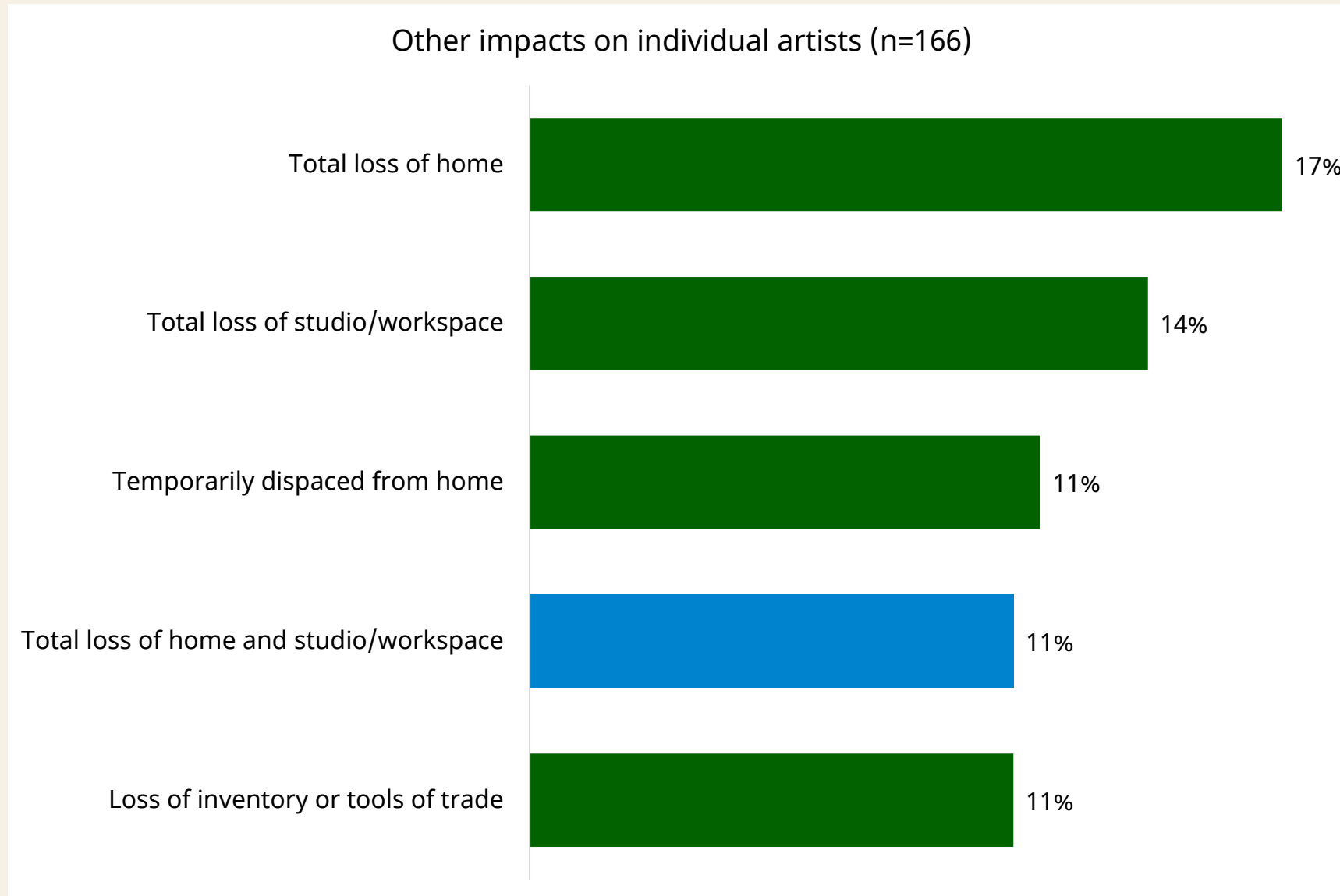
Respondent ZIP codes in proximity to the wildfires



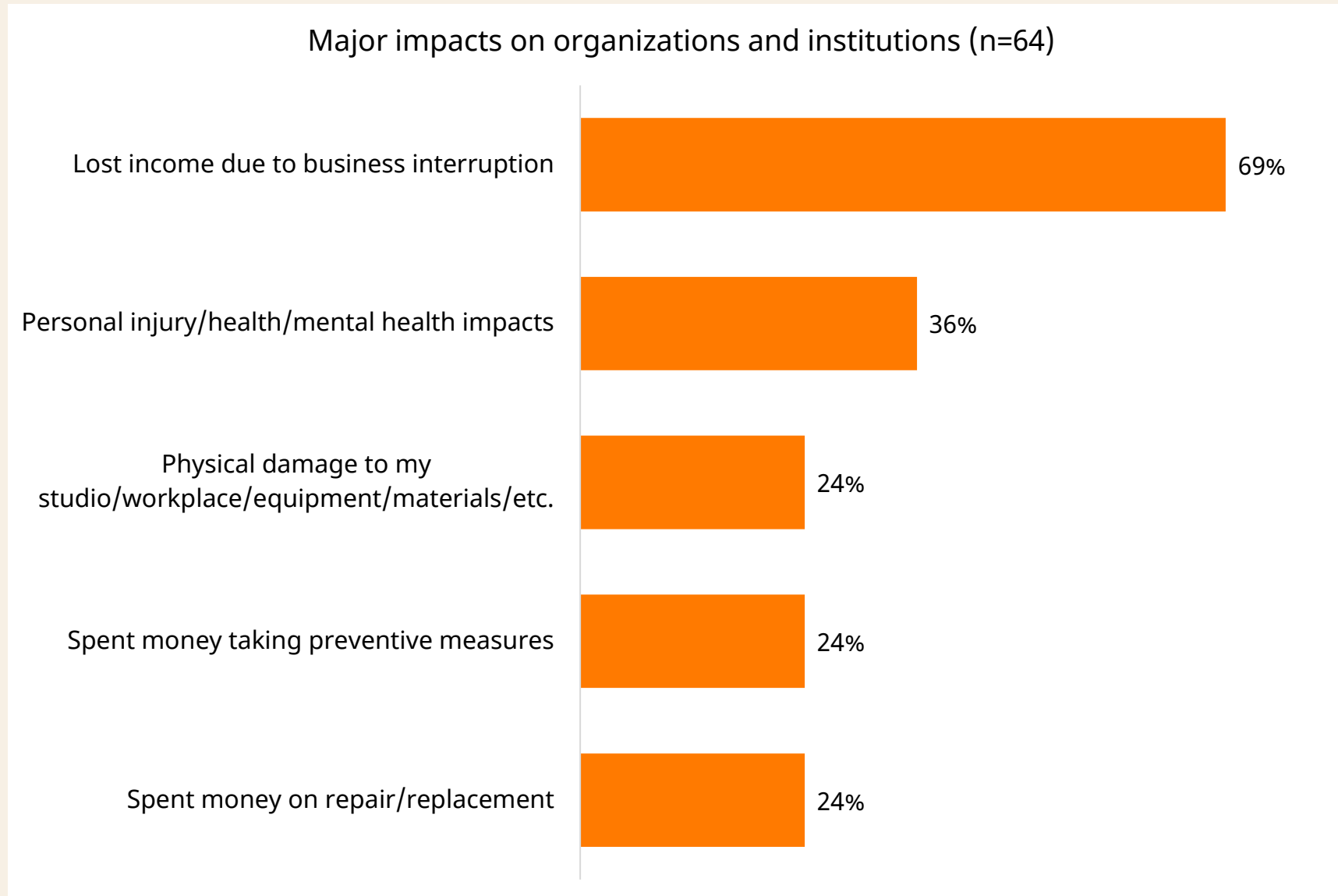
The most common impact on individual artists was lost income



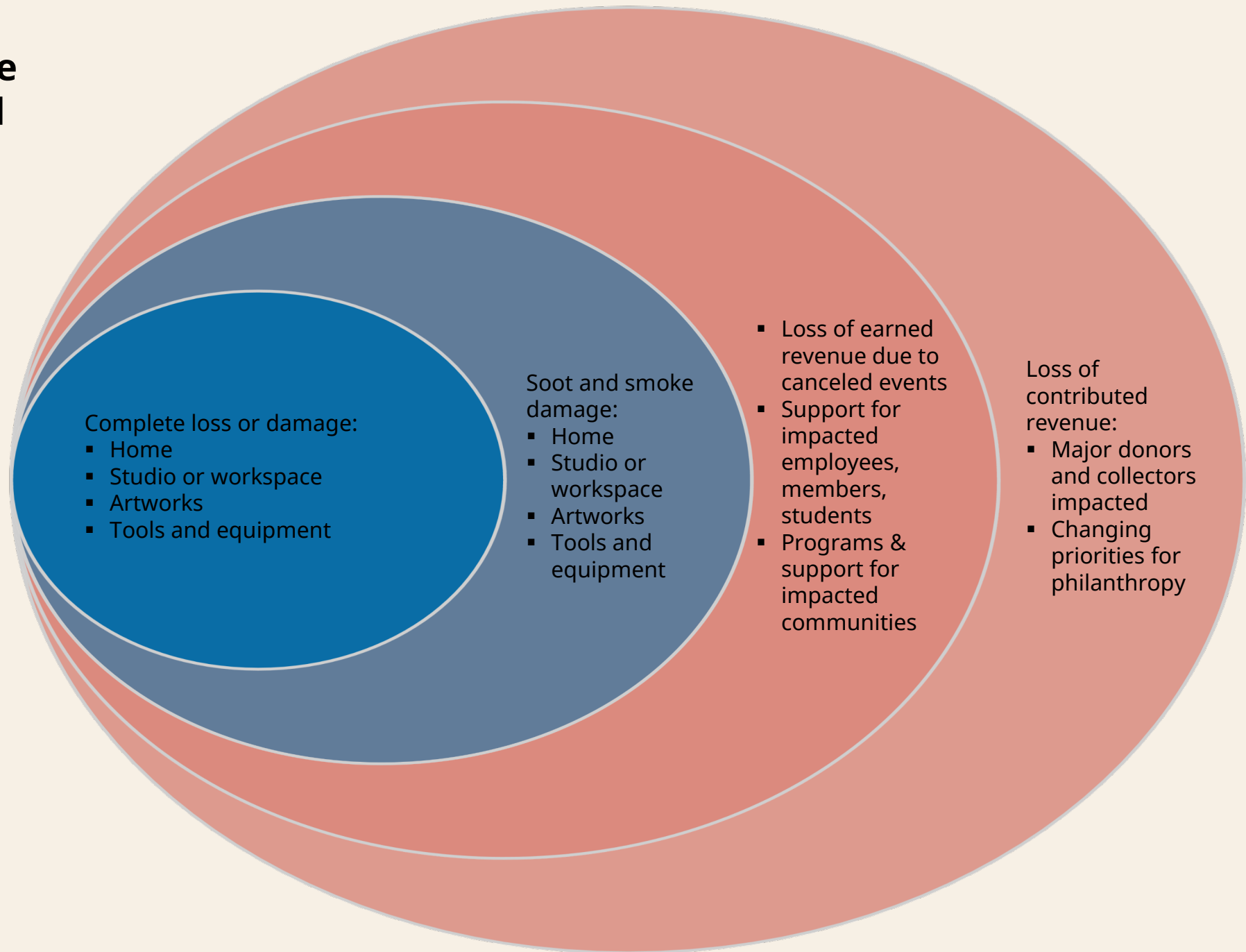
Most artists who lost homes also lost their workplace, and vice versa



Almost the same share of arts organizations and institutions lost income

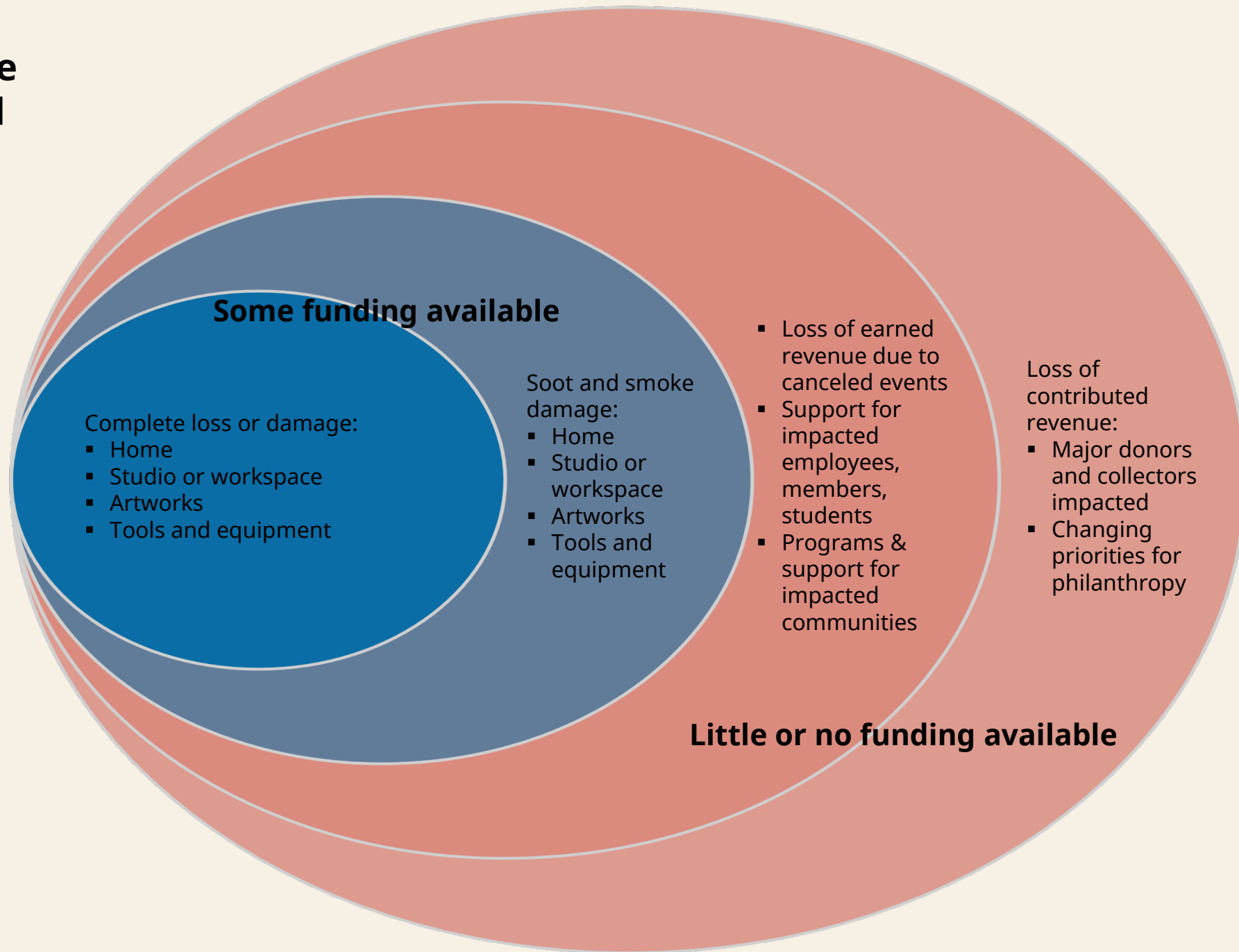


Financial ripple effects beyond the fire perimeter and evacuation zones



Financial ripple effects beyond the fire perimeter and evacuation zones:

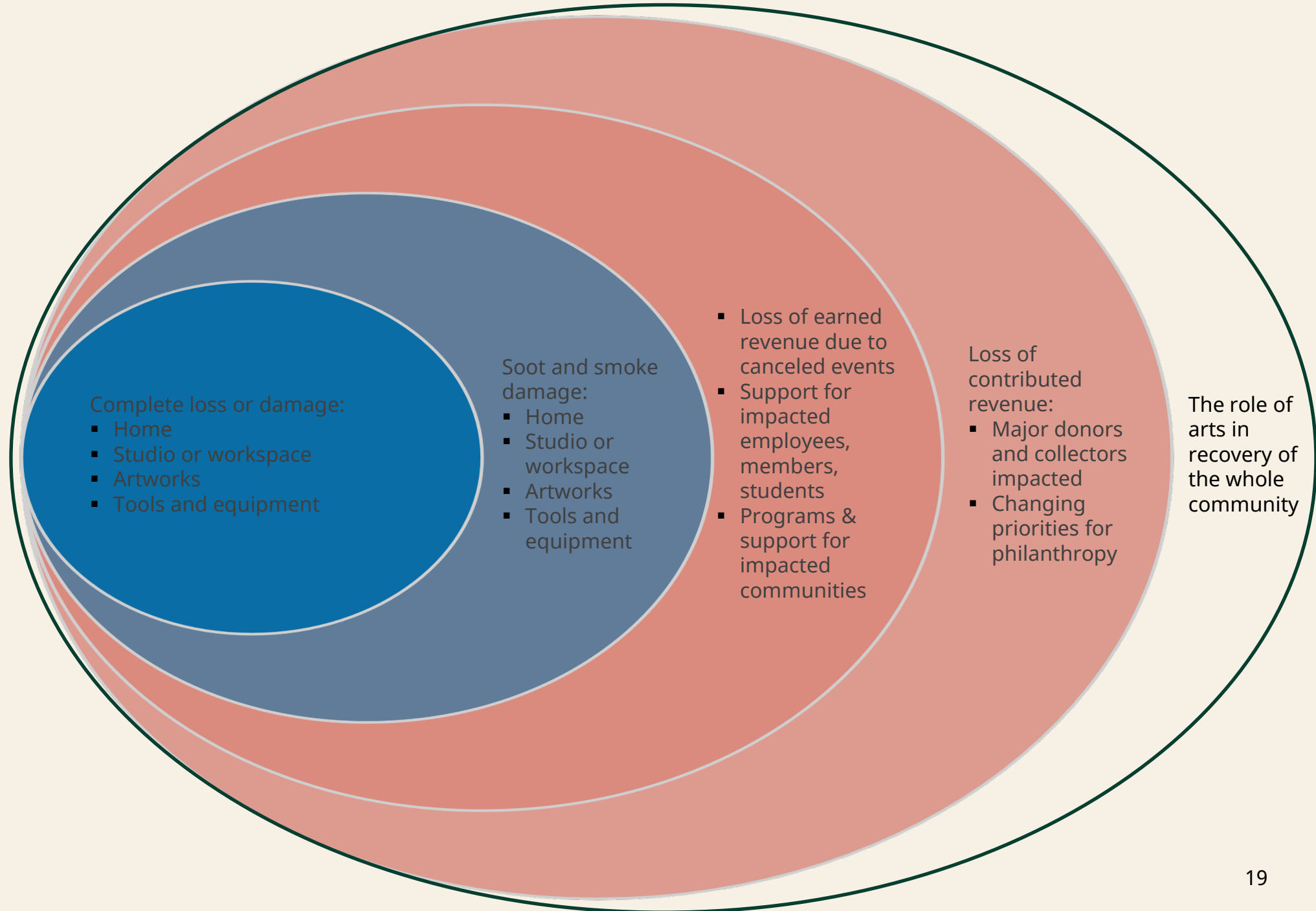
Funding availability



The role of arts in recovery:

Funding and support needed ahead

- Community wellbeing
- Healing centered arts education
- Social cohesion
- Rebuilding
- Economic revitalization
- Cultural preservation
- Sustainability
- Preparedness





More information:

lacountyarts.org/experiences/arts-and-culture-digital-resource-center/wildfire-impact-reporting