

Make It or Break It: Choosing Your Materials Wisely



Presented by: LaStarsha McGarity

Arts Tune Up

October 21st, 2020

IDEA

- ❖ Aesthetics
- ❖ Start thinking about what materials can achieve this look
- ❖ Define your intent



Image:
Shutterstock

IDEA

WHERE?

- ❖ Indoors / outdoors?
- ❖ Near water / plantings?
- ❖ Can the public interact with your work?
- ❖ Other risks of the location?



Image:
Jürgen Hans/objektfotograf.ch, via
Collection Vitra Design Museum



IDEA

WHERE?

TEST

- ❖ Most manufacturers will send FREE samples
- ❖ Reach out to companies that use the product if its a non-traditional art material
- ❖ Test whether it fits your aesthetic and preservation needs



© Shutterstock / Jorge Salcedo

Image:
Shutterstock



IDEA

WHERE?

TEST

DOCUMENT

- ❖ Keep notes/ sketches
- ❖ Save samples and Safety Data Sheets of the materials you used
- ❖ Document your intent



Image:
MFA Boston



IDEA

WHERE?

TEST

DOCUMENT

PLAN

- ❖ No material is permanent, think about what change is acceptable
- ❖ Think about what happens in the event of damage
- ❖ Find a safe storage location for your documented information



Image:s
Evergreene
Architectural Arts

Artist Led Example

ANOTHER PLACE, 1997

Antony Gormley

Solid Cast Iron

Permanently installed on Crosby Beach in Merseyside, England



Image: Antony Gormley



Image: Antony Gormley

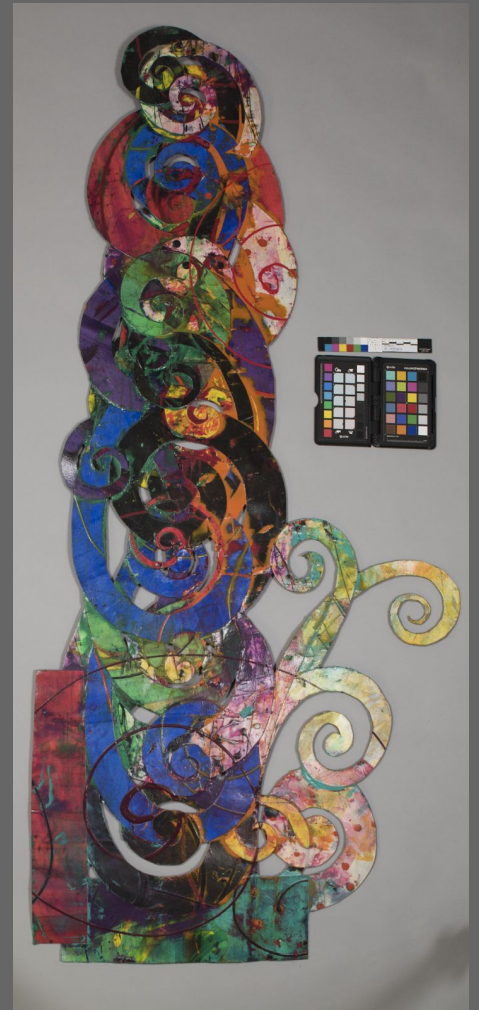


Images: JofusSunshyne(left)
Visitlivepool.com (right)

Conservator Led Example



Zayamaca #4, 1994
Al Loving
Acrylic paint, paper,
acrylic medium, staples,
polymethyl-methacrylate
(PMMA) sheet
Saint Louis Art Museum



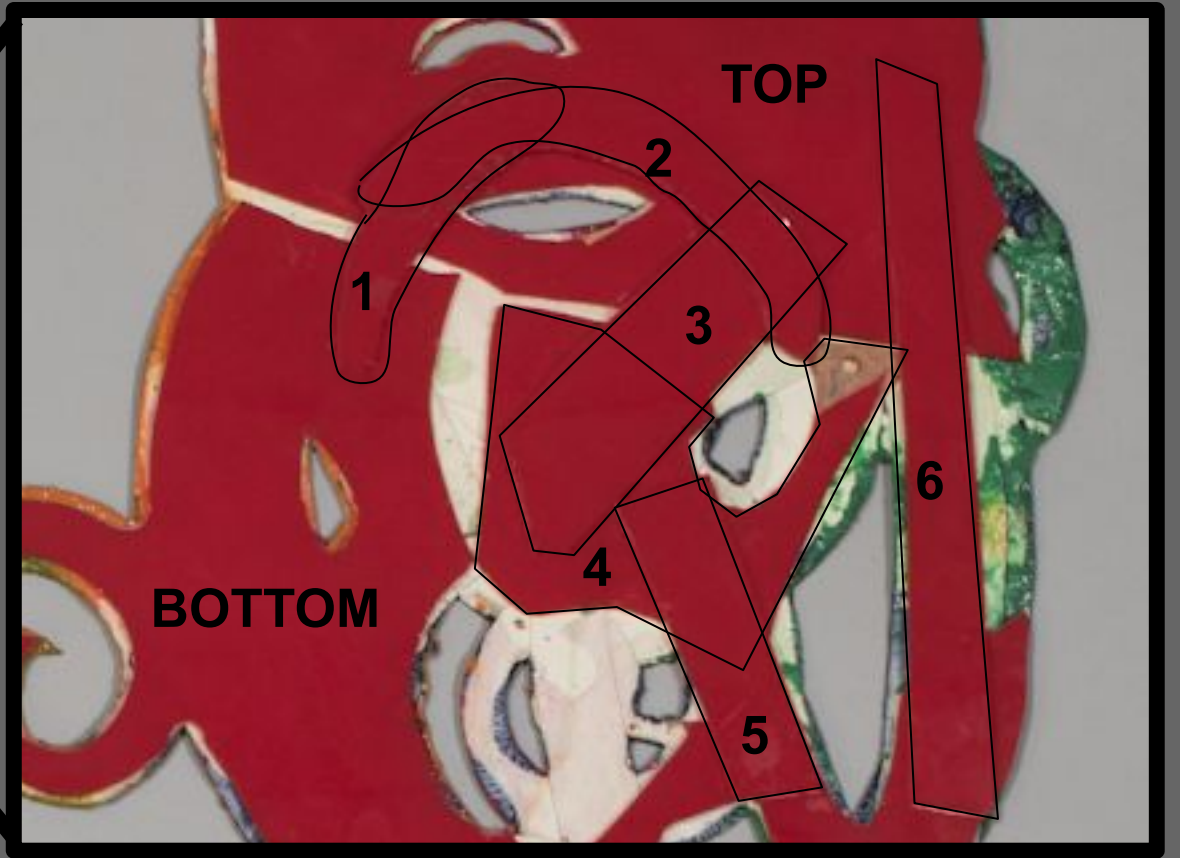
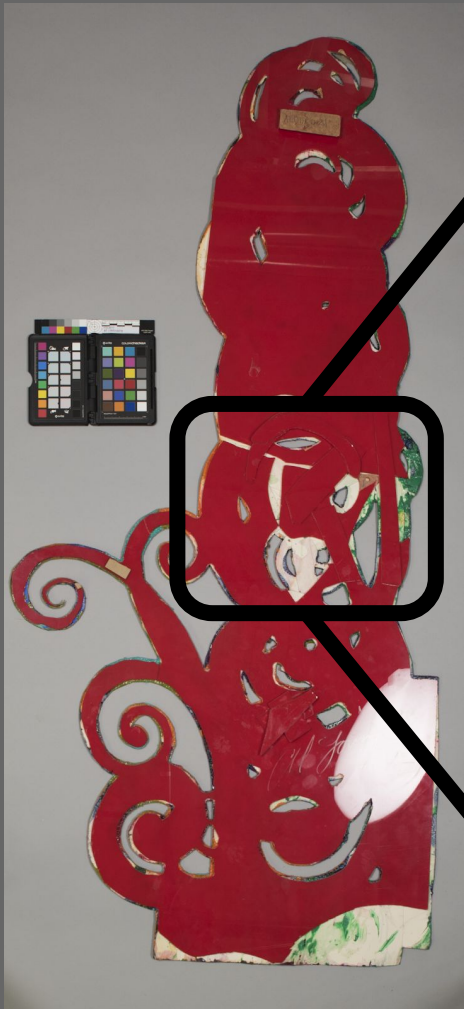




Image: Livy Bailin





ACKNOWLEDGMENTS

Los Angeles County
Department of Arts
and Culture

Laleña Vellanoweth

Brianna MacGillivray

Thank you for
being present
and listening!