

LA County Dept of Public Health COVID-19 Liaison call line

not for public – just businesses, non-profits, stakeholders

877-777-5799

LiaisonCOVID19@ph.lacounty.gov

Decrease in COVID

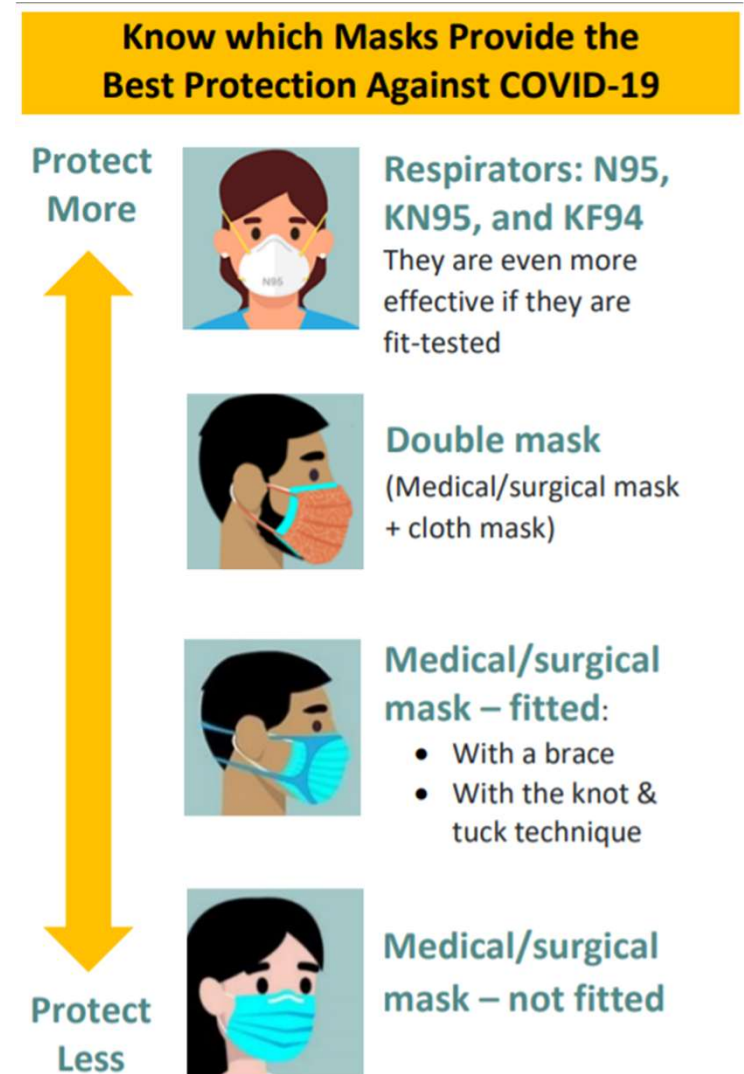
- Cases, hospitalizations going down
- Omicron surge is essentially over
- No new variants that we think would change the situation too much
- Vaccinations protect against severe disease, reduce risk of getting infected
- New effective treatments available (in small amounts)
- Policies changing rapidly
 - CDC – guidelines
 - State – laws
 - County – ordinances and health orders – can be stricter than state

Indoor masking update

Indoor Masking

- Mask wearing
 - Simple, highly effective way to reduce risk of transmitting COVID, especially indoors
 - Businesses may continue to require even as laws change
 - Keeping indoor masking is safer, more inclusive and inviting for your immunocompromised patrons

Study: https://www.cdc.gov/mmwr/volumes/71/wr/mm7106e1.htm?s_cid=mm7106e1



Changing Indoor Masking Requirements

- Feb 16, 2022 – State of California removes requirement for fully vaccinated to mask indoors. Unvaccinated must still mask.
 - LA County to keep in place until transmission risk for virus lower (Moderate level as measured by CDC)
 - Feb 25 – LA County issues interim indoor unmasking allowance for fully vaccinated **only for businesses that meet certain criteria** (see next slide)
- March 1, 2022 – State of California to remove mask requirement for unvaccinated

LA County Interim indoor unmasking allowance for fully vaccinated (Feb 25, 2022)

- **Choose which group in the business it will apply to**
 - Option #1—All Customers/visitors **and** onsite workers.
 - Option #2—Just customers and visitors. All workers stay masked indoors.
- **Verify *all* in group are fully vax or recent negative test**
 - Negative tests
 - PCR test from within 2 days, antigen test from within 1 day.
 - If applying the policy to workers (i.e. choosing Option 1), then workers may present a negative test every 3 days.
- **Provide all a respirator-type mask (N95/KN95/KF94) to all workers.**
- **Reminder: Unvaccinated or partially vaccinated persons must continue to wear a well-fitting mask indoors.**
- **Does *NOT* apply to:** Settings with Federal / State indoor masking requirement for all: public transit and transit hubs, healthcare settings, correctional facilities, homeless shelters and emergency shelters, and schools.



Basic requirements for performance spaces

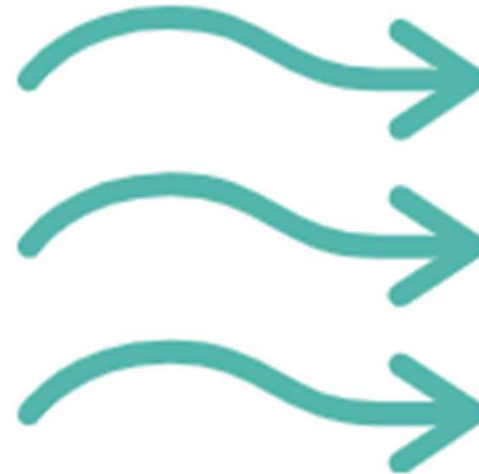
Best Practices for Smaller and Cultural Events

<http://publichealth.lacounty.gov/acd/ncorona2019/bestpractices/venues/>

Event Location	Number of Attendees	Masking Rules****	Proof of Full Vaccination (or negative test*) required for patrons?	Performer requirements
INDOOR	Under 1,000 <i>Not a mega event</i>	<p>Required for all patrons and employees.</p> <p>Employees must wear a medical grade mask, surgical mask or higher-level respirator (N95, KN95) when indoors.</p> <p><i>NEW - Feb 25 – Venues may use Interim Unmasking for Fully Vaccinated policy.</i></p>	<p>LA City: Required of all age 12 and older,</p> <p>Not LA City: strongly recommended</p> <p>Fully vaccinated or recent negative test (PCR within 2 days, antigen within 1 day)</p>	<p>Ideally, performers should be at least 12 feet from audience members.</p> <p>Performers unmasking indoors:</p> <ul style="list-style-type: none"> • Up-to-date on vaccination (boostered or not yet due) test at least 1x weekly • Not up-to-date on vaccination or unvaccinated – test at least 2x weekly

<http://publichealth.lacounty.gov/acd/ncorona2019/bestpractices/venues/>

Ventilation



- Good ventilation key to reducing risk
- Maximal outside air
 - Open doors and windows if safe to do so
- HVAC
 - Air changes per hour (ACH) aim for 2-6
 - More if space is crowded or few doors and windows open
 - MERV 13 filter is system can handle it
 - Set to 100% outside air
 - Run for 2 hours before and after event
- Careful use of fans. When in doubt one blowing outward. It pulls air inward through open doors/windows on opposite side of room.
- State guidance on ventilation – very thorough:
<https://www.cdph.ca.gov/Programs/CID/DCDC/Pages/COVID-19/Interim-Guidance-for-Ventilation-Filtration-and-Air-Quality-in-Indoor-Environments.aspx>
- Improving school gymnasium ventilation
 - <http://publichealth.lacounty.gov/acd/ncorona2019/docs/GymVentilationGuidance.pdf>

The future

- When will it be safe for large fully vaccinated and booster indoor choir to sing without masks?
 - Not clear at the moment
 - Perform own risk assessment. Ask about
 - Current risk level for COVID?
 - Amount of transmission
 - Severity
 - Higher risk individuals in choir or audience? (older age, underlying health issues)
 - Can you increase ventilation?
 - Mask wearing for audience?
 - Can you test everyone before performance?
 - Discuss risk as a group?

COVID-19 Guidance links

LA County Health Officer Order - http://www.publichealth.lacounty.gov/media/coronavirus/docs/HOO/HOO_SaferReturnWorkCommunity.pdf

LA County main COVID page - <http://www.publichealth.lacounty.gov/media/coronavirus/>

Performance Spaces and Galleries – key links

- Businesses - publichealth.lacounty.gov/acd/ncorona2019/BestPractices/
- Smaller and Cultural Events - publichealth.lacounty.gov/acd/ncorona2019/bestpractices/venues/
- Mega Events - publichealth.lacounty.gov/acd/ncorona2019/BestPractices/LargeEvents/
- Vaccination/test verification toolkit - publichealth.lacounty.gov/media/coronavirus/business-verification.htm
- Guidance for professional Performers - publichealth.lacounty.gov/media/Coronavirus/docs/business/Guidance-ProfessionalPerformers.pdf
- Responding to COVID in the Workplace - publichealth.lacounty.gov/acd/ncorona2019/workplaceresponse/
- LA County Interim unmasking allowance - <http://publichealth.lacounty.gov/media/Coronavirus/business-masks.htm>
- Mask upgrade - <http://publichealth.lacounty.gov/media/Coronavirus/docs/business/UpgradeMaskRequirement.pdf>
- LA County Dept of Arts and Culture FAQ - https://www.lacountyarts.org/sites/default/files/dph_artsculture_faq_20211109.pdf

Ventilation

- State guidance on ventilation – very thorough - cdph.ca.gov/Programs/CID/DCDC/Pages/COVID-19/Interim-Guidance-for-Ventilation-Filtration-and-Air-Quality-in-Indoor-Environments.aspx
- Improving school gymnasium ventilation - <http://publichealth.lacounty.gov/acd/ncorona2019/docs/GymVentilationGuidance.pdf>

If you are in LA City

- SafePassLA.org

For Schools

- **TK – 12 Schools** - <http://ph.lacounty.gov/acd/ncorona2019/EducationToolkit/tk12/>
- **Higher Education** - <http://ph.lacounty.gov/acd/ncorona2019/EducationToolkit/IHE/>

More Resources

- **State list of lab services**
 - <https://testing.covid19.ca.gov/covid-19-testing-task-force-laboratory-list/>
 - Look for Full Service option for labs that can do sampling too
- **Free and low-cost PPE** (Personal Protective Equipment like masks)
<http://publichealth.lacounty.gov/docs/FreeAndLowCostPPE.pdf>
- **LA County Dept of Consumer and Business Affairs**
 - <https://lacountyhelpcenter.org/>
 - **833) 238-4450**. Hours: Monday to Friday 8 a.m. – 4:30 p.m.
- School-based Arts education programs ***might*** be able to receive free COVID-19 Antigen tests.
Reach out to
ACDC-Education@ph.lacounty.gov

CDC's Measurement of Risk

Old approach using
[CDC's COVID Data Tracker](#)

Indicator	Low Transmission	Moderate Transmission	Substantial Transmission	High Transmission
Total new cases per 100,000 persons in the past 7 days	0-9	10-49	50-99	≥100
Percentage of Nucleic Acid Amplification Test results that are positive during the past 7 days	<5.0%	5.0%-7.9%	8.0%-9.9%	≥10.0%

New approach
[COVID-19 Community Levels](#)

CDC's COVID-19 Community Levels and Indicators

New Cases (per 100,000 population in the last 7 days)	Indicators	Low	Medium	High
Fewer than 200	New COVID-19 admissions per 100,000 population (7-day total)	<10.0	10.0-19.9	≥20.0
	Percent of staffed inpatient beds occupied by COVID-19 patients (7-day average)	<10.0%	10.0-14.9%	≥15.0%
200 or more	New COVID-19 admissions per 100,000 population (7-day total)	NA	<10.0	≥10.0
	Percent of staffed inpatient beds occupied by COVID-19 patients (7-day average)	NA	<10.0%	≥10.0%

The COVID-19 community level is determined by the higher of the inpatient beds and new admissions indicators, based on the current level of new cases per 100,000 population in the past 7 days

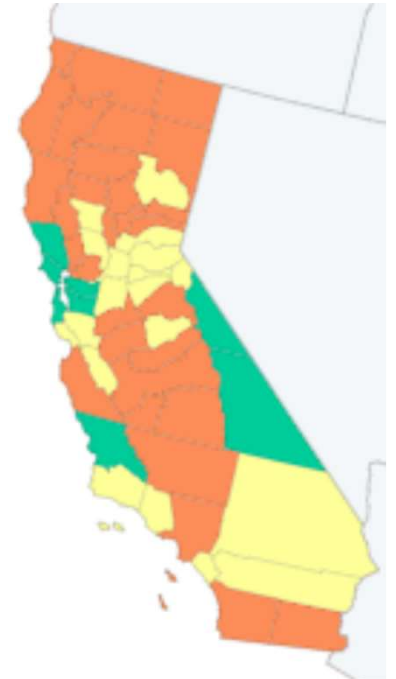
CDC's COVID-19 Community Levels

<https://www.cdc.gov/coronavirus/2019-ncov/science/community-levels.html>

CDC's COVID-19 Community Levels and Indicators

New Cases (per 100,000 population in the last 7 days)	Indicators	Low	Medium	High
Fewer than 200	New COVID-19 admissions per 100,000 population (7-day total)	<10.0	10.0-19.9	≥20.0
	Percent of staffed inpatient beds occupied by COVID-19 patients (7-day average)	<10.0%	10.0-14.9%	≥15.0%
200 or more	New COVID-19 admissions per 100,000 population (7-day total)	NA	<10.0	≥10.0
	Percent of staffed inpatient beds occupied by COVID-19 patients (7-day average)	NA	<10.0%	≥10.0%

The COVID-19 community level is determined by the higher of the inpatient beds and new admissions indicators, based on the current level of new cases per 100,000 population in the past 7 days



As of 2/28/22 LA County still in a HIGH Level.

For communities with a HIGH level of COVID, CDC recommends everyone still wear a mask indoors