




LOS ANGELES COUNTY
DEPARTMENT OF ARTS AND CULTURE

**CIVIC ART
DIVISION**

**FY 2020 - 2021
ANNUAL REPORT**

A woman with long dark hair, wearing a black tank top and a long, colorful patterned skirt, stands in a courtyard. She is reaching out to touch a shallow stream of water flowing over a series of colorful, abstract, bowl-shaped sculptures mounted on a wall. The sculptures are in various colors including blue, green, red, and yellow. The water is clear and reflects the surrounding environment. The background shows a modern building with large concrete columns and a paved walkway with some greenery.

Detail of *The Organic Infrastructure of a Living Community*, pictured on the cover, by Geoff McFetridge in the courtyard of the Public Works Headquarters. Photos by Yoshihiro Makino.

CIVIC ART DIVISION

FY 2020 - 2021

PROJECTS SUMMARY

138 Total Civic Art Projects

- 104 Actively Managed Projects
- 34 Projects in Scoping
- 29 Completed or Installed Projects
- 526 Artworks in Civic Art Collection

YEAR IN REVIEW	4
CAPITAL PROJECTS	6
Installed Projects	7
Active Projects	16
Art Purchases	22
COUNTY COLLECTION PROJECTS	24
Temporary Projects	25
Donation and Conservation Projects	28
Professional Development	30
PROJECTS LIST	33
First District	33
Second District	36
Third District	39
Fourth District	40
Fifth District	40
Countywide	42

CONTENTS



Down the Block, a two-dimensional lightbox artwork in the lobby of Mark Ridley-Thomas Behavioral Health Center by artist team FreelandBuck. Photos by Eric Staudenmaier.

In 2004, the Los Angeles County Board of Supervisors adopted the County’s first Civic Art Policy, allocating one percent (1%) of design and construction costs of new County capital projects to a Civic Art Special Fund for the creation of civic artworks. The County’s Civic Art Policy is managed by the Department of Arts and Culture’s Civic Art Division, to commission socially engaged civic artworks, support conservation efforts, and manage artistic and cultural programs and services throughout the unincorporated areas of Los Angeles County in all five Supervisorial Districts.

One year from the sweeping changes initiated by the coronavirus pandemic and its transformative impacts on our lives, the Civic Art team is grateful to continue supporting artists who create meaningful artwork that reflects and engages LA’s diverse communities. Despite delays across many areas of the economy, our work has yet to slow down. In fact, during the 2020-2021 fiscal year, we nearly doubled the number of projects actively managed from the previous year, ranging from multi-artist, site-specific commissions at the County’s Restorative Care Villages to producing temporary and permanent artworks along the 13-mile Park to Playa Trail.

More importantly, we doubled down on our commitment to reexamine our practices and introduce procedural changes to better promote access and inclusion in the attainment of resources for underrepresented artists in public art and allow greater participation in the artist selection process for community members. These changes led to revisions of the Civic Art Policy and Procedures in Fall 2020.

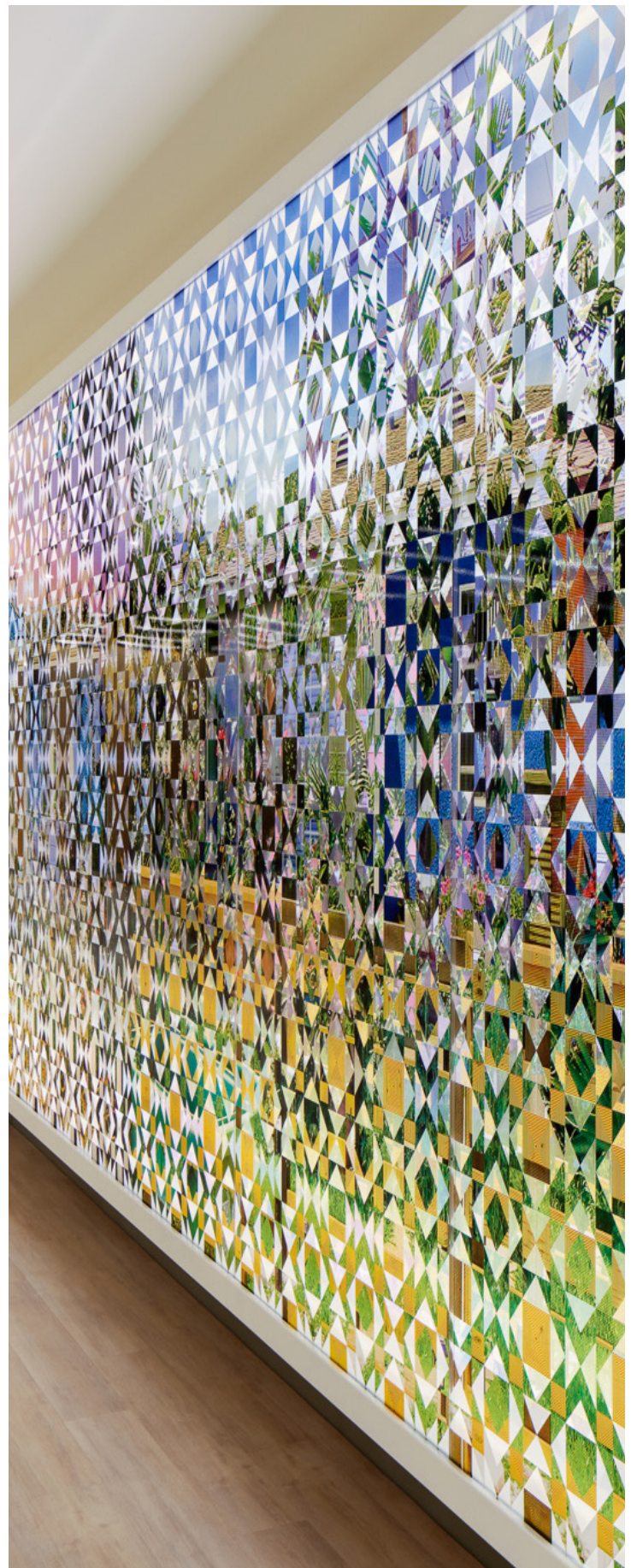
The details of this work continue and are further supported by the adoption of the Countywide Cultural Policy in June 2021, a landmark achievement in the Department of Arts and Culture’s efforts to ensure that everyone in LA County has equitable access to arts resources and services. As Department Director Kristin Sakoda stated, “This policy sets out a bold vision for arts and culture, that I believe, as it is implemented, will enhance the role of the arts in our lives and build more innovative, inclusive government for the Los Angeles County region.”

This past year, we were honored to work in partnership with the Native American Indian Commission to produce a series of Indigenous-led art and educational activities in response to the removal of the Christopher Columbus statue from Grand Park in 2018. In the words of the selected artists, Mercedes Dorame and the Puvungna Collective, “Murals, monuments, and statues ... surround the users of spaces with signifiers about what or who is important and why ... But this is an illusion, and a challenge to those who seek equity and change.” Their resulting project, *Memory and Futurity in Yaanga*, presents an alternative future rooted in reciprocity, belonging, and right relationship to the land through a retelling of the past.

Because as artist team FreelandBuck’s newly completed artwork for the Mark Ridley-Thomas Behavioral Health Center further reminds us, rich dimension may be found in the details of community life and the neighborhood legacies that support us. *Down the Block* is a 90-foot aluminum and polycarbonate lightbox comprised of digital photographs of three sets of homes from the surrounding Willowbrook community, layered in a geometric, quilt pattern of opaque and translucent images. The resulting parallax effect causes the work to visually vibrate as the viewer moves around the piece.

FreelandBuck worked with Silver Threads, a Willowbrook seniors’ quilting group, to engage community members through a series of in-person and virtual meetings to develop the source material for the design. The final artwork is both familiar and strikingly new, merging a sense of tradition with innovation, much like Silver Threads themselves. With over 20 years of experience working with the community and hospital to sew hand-made quilts to support patients on their healing journeys, Silver Threads represents the kind of community care rooted in the past that has felt all the more timely during this period of immense change.

We wish to thank the Board of Supervisors and our other County colleagues, the Department of Arts and Culture’s executive leadership, and our invaluable community partners and artists who continue to support our work and champion the important role of art in civic life.





CAPITAL PROJECTS

Art in our public spaces results from thoughtful coordination among local communities, design team members and County staff. From inception to design development, fabrication and installation, civic art projects generally require one to three years to complete permanent artworks. They may also include temporary artworks and artist residencies of a shorter duration. The following pages highlight a few of the many active and completed projects managed across the County within the past fiscal year.



VERMONT CORRIDOR

The Vermont Corridor is an innovative public-private partnership between the County of Los Angeles and Trammell Crow Company to transform a two-block area of Koreatown into a modern complex expected to revitalize the area and serve a variety of community needs. The first of three projects is a 15-story building designed by Gensler to house the Department of Mental Health and Workforce Development, Aging and Community Services headquarters. Though the building was completed prior to the Developer Delivered County Capital Project policy adoption, through the work of the Second District and the Community Development Commission, Trammell Crow elected to include a civic art component which led to two projects created for the lobby and outdoor terrace areas of the building, described below.

Lobby

Situated on the soffit wall at the street level entrance of the Vermont Corridor is a multilayered painting by artist Suzy Taekyung Kim. Spanning 9 by 53-feet, *Canopy of Blooms* reflects the endless cycle of life and death through an infinity loop of blooming native wildflowers. Layers of paint, gold and silver leaf, and paper combine to create an exquisite tapestry of radiating colors that celebrate the life stories of Koreatown residents across generations, and invite viewers to find moments of harmony, hope and healing under its expanse. Sporadically visible within the layers of the artwork is

a speech on Korean Hanji paper by Dosan Ahn Chang Ho, an early leader of Korean American immigrants. Published in 1920, the speech advocated sovereignty from Japanese colonial rule and lauded the Korean independent spirit that helped shape the Los Angeles Koreatown neighborhood. Installation of the mural was completed in early May 2021.

Terrace

Amir H. Fallah's three-part installation *Portals*, a collaboration with Judson Studios, is made of stained and fused glass — a medium the artist chose to convey the possibility of seeing past obstacles and progressing into the future. Each brightly colored, 6 by 8-foot panel features a lush botanical border representing healing and growth. Hundreds of different types of plants found in the surrounding area are depicted, reflecting the diversity of Los Angeles. Within the foliage, Fallah has placed the abstracted outlines of three styles of doorways — Victorian, Korean and Mid-Century Modern — inviting viewers to push past metaphoric boundaries. Installed outdoors on the Terrace, the effect of *Portals* will change throughout the day, creating colorful new designs on the concrete around it as the sun spills through its glass sections. The artwork offers both clients and staff the opportunity for a moment of calm reflection and renewal. Installation was completed in early May 2021.

Opposite page: *Portals* by Amir H. Fallah at Vermont Corridor. Photo by Alan Shaffer. Above: *Canopy of Blooms* by Suzy Taekyung Kim at Vermont Corridor. Photo by Joshua White.



EDMUND D. EDELMAN CHILDREN'S COURT

Dedicated in 1992, Edmund D. Edelman Children's Court in Monterey Park was the first juvenile courthouse in the nation specially designed to meet the emotional needs of children. Serving mostly inner-city youth and, in some cases, children who have been in the facility multiple times, the courthouse facilities include a renovated play area with five walls dedicated to showcasing artwork. Artist Andrew Hem was selected to create 5 painted murals for the interior courtyard, completed in April 2021.

The mural series, *United by Will*, highlights the outdoor play area as a positive site for engagement among staff and children while conceptually communicating the idea of children as the heroes of their own stories. Apart from their costumes, superheroes are often unassuming people with relatable problems. They encourage kids to express brave parts of themselves while acknowledging their vulnerabilities and limits. Rendered in Hem's colorful and imaginative figurative style, the mural images at the courthouse represent the ideas of collaboration, support, determination, friendship, courage and hope – all elements of personal strength. The "powers" that the children and teenage subjects of these murals share are their ability to persevere and endure difficult circumstances. Through these murals, the artist hopes to encourage the heroes of tomorrow and inspire children to believe in themselves.



Above: select work from *United by Will* mural series by Andrew Hem at Edmund D. Edelman Children's Court. Photos by Nikki Dixon.



DEVIL'S PUNCHBOWL NATURAL AREA AND NATURE CENTER

The Devil's Punchbowl is a 1,310-acre geological wonder where visitors can walk, hike or take a horseback ride on a 7.5-mile round-trip trail through a deep canyon formed by the runoff of large quantities of water from the San Gabriel Mountains and features spectacular vertical tilted rock formations created by layers of sedimentary rocks. Artist Aaron Morse was selected to create artwork on one of the small walls of the welcoming and nature center.

Entitled *Devil's Punchbowl Wildlife*, the mural illustrates an imaginary scene from the arroyo at the bottom of the loop trail showing local plants and animal species,

many of which are exhibited at the Nature Center, with the trail's main rock formation shown in the distance. The landscape directly inspired the incorporation of such colors as red oxide, raw sienna, sunset yellow, teal, cocoa brown and lavender gray. The artwork also intends to recall vintage posters and postcards celebrating California's natural beauty.

As a result of the wildfires, Devil's Punchbowl's Nature Center was unfortunately burned down, so Vasquez Rocks Natural Area and Nature Center was designated as the alternate site to showcase the mural. Installation of the mural at Vasquez Rocks Natural Area and Nature Center was completed in mid-April 2021.

This page: *Devil's Punchbowl Wildlife* by Aaron Morse at Vasquez Rocks Natural Area and Nature Center. Photos by Aaron Morse.



ZEV YAROSLAVSKY FAMILY SUPPORT CENTER

Zev Yaroslavsky Family Support Center is an award-winning facility that brings together seven family services departments under one roof to create a more collaborative environment for staff and improve access to services for the San Fernando Valley's communities. Artist Chris Natrop was selected to create an artwork for the Center's East Lobby, a busy waiting area for visitor check-in and assessment.

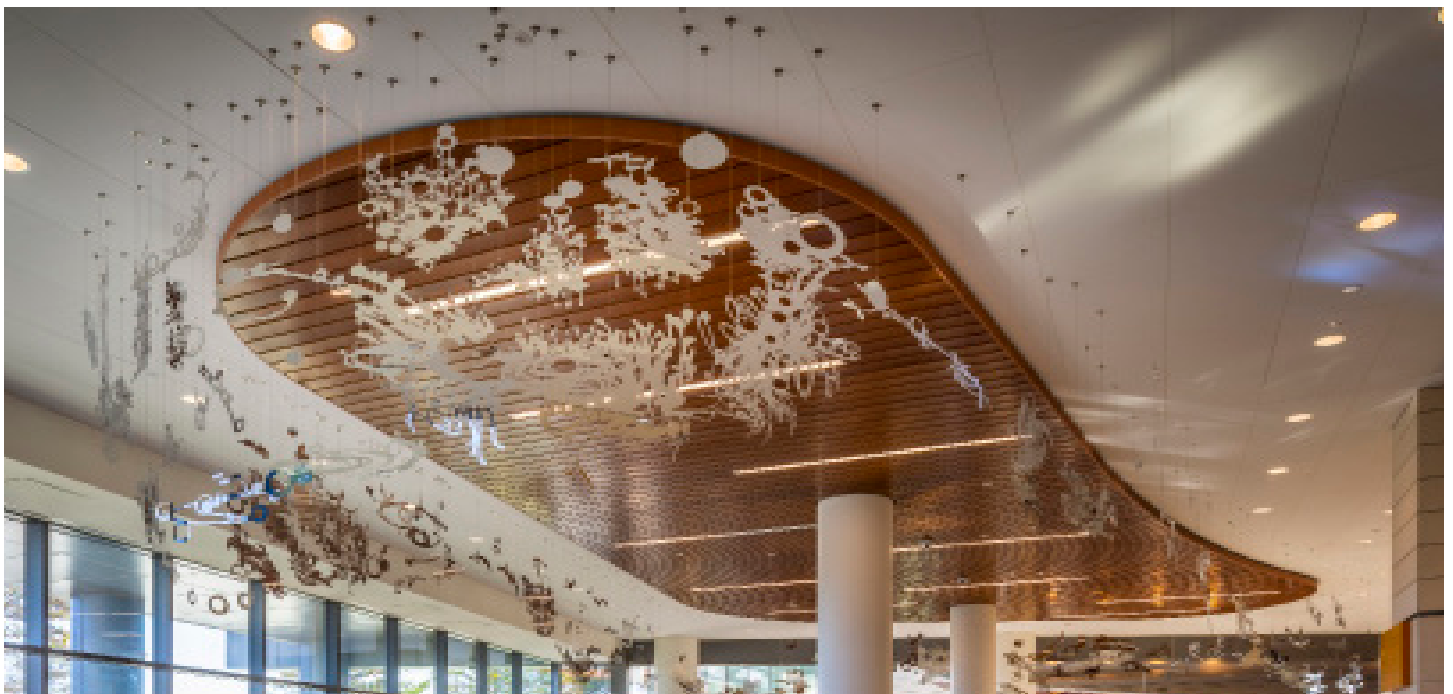
The artwork aims to create an uplifting and calm environment in an area that introduces patients to the facility, while also distinguishing a significant corner of the building at the intersection of Van Nuys Boulevard and Saticoy Street, visible to the public from the street.

Reflecting Within Us is an aerial sculpture comprising 130 intricate shapes with mirrored surfaces suspended along a 150-foot perimeter of the ceiling in the East Lobby of the Center. The shapes, cut from highly polished stainless steel alloy, form various silhouettes recognizable in nature, including birds, trees, and water elements, which interact with the sunlight from the lobby windows to cast light and shadows upon the adjacent architecture. Each figure was first produced in the artist's studio as hand-cut paper, then digitized for further development and fabrication. The elements come together in various combinations, creating



larger, multifaceted installations: worlds in which light and form coalesce into a unified universe to create a serene and immersive environment accessible to all visitors, encouraging open-ended interpretation and personal reflection. Installation of the artwork was completed in October 2020.

This page: *Reflecting Within Us* by Chris Natrop at Zev Yaroslavsky Family Support Center. Photos by Chris Natrop.





DCBA HEADQUARTERS

Since 1975, the Department of Consumer and Business Affairs (DCBA) has been the County's local consumer protection agency. DCBA promotes a fair and vibrant marketplace and serves consumers, businesses and communities through education, advocacy and complaint resolution. DCBA educates consumers and small business owners about their rights and responsibilities, mediating disputes, and investigating consumer fraud complaints.

Artist Soo Kim was selected to create an original mixed media collage triptych consisting of three archival pigment prints mounted on Dibond with hand-cut Tyvek sheets and framed in a Plexiglas box for the northwest wall of the lobby of DCBA headquarters. The artwork design was informed through a civic engagement process in collaboration with DCBA. During the engagement, staff was invited to share one to five images of sentimental objects that convey their sense of home, to be incorporated into the artwork. Layered on top of this grid of symbols, the artist intertwined golden branches with images of renowned architect Richard Neutra's work, including the Hall of Records building where DCBA is headquartered and where this artwork resides. Neutra's dedication to designing affordable, multifamily houses aligns with DCBA's mission of empowering and protecting Los Angeles County residents.



This page: *A Record of Everything* by Soo Kim at DCBA Headquarters.
Photos by Lisa Ohlweiler.

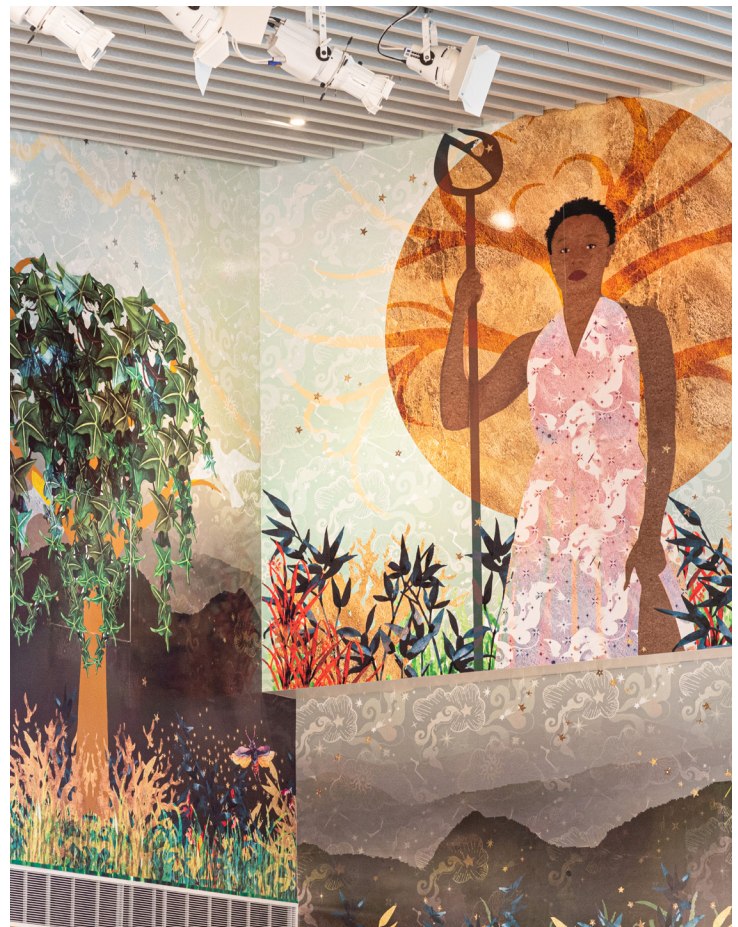
Following Neutra's philosophy, Kim's resulting artwork, *A Record of Everything*, explores the interconnection between personal, architectural and natural elements that contribute to community well-being. Installation was completed in May 2021.



MAGIC JOHNSON PARK MULTIPURPOSE ROOM

As part of a community-driven revitalization plan for Willowbrook, the 126-acre Magic Johnson Park is undergoing extensive renovations to provide an array of amenities currently unavailable in South LA. Phase 1 of the park redevelopment included the construction of a new 20,000-square-foot Multipurpose Room to host community events. Carla Jay Harris was selected to create site-specific artwork, which was completed in August 2020.

Spanning three walls of the Center, *The Guardians* is a mural inspired by the artist's positive memories of the community spaces of her youth and a direct response to the traumatic events of 2020. The central theme of sanctuary is represented by two female figures who frame the space and act as guardians watching over an idyllic pastoral park scene that includes birds and plant species native to the surrounding area, intertwined with mythological elements. By blending reality with fantasy, the artist intended to imbue the space with the feeling of a surreal oasis for new and returning visitors to enjoy. As the child of a military officer, Harris traveled the globe, and her social and artistic development were deeply impacted by the many new environments she encountered. Community centers functioned as a sanctuary for the artist – a space to feel grounded again, connecting with family, neighbors, and friends.



Above: *The Guardians* by Carla Jay Harris at Magic Johnson Park. Photos by Irina Logra.



RANCHO LOS AMIGOS OUTPATIENT BUILDING

To round out the last phase of a series of projects on the north campus of the Rancho Los Amigos National Rehabilitation Center, artist Hataya Tubtim was selected to complete a project for the Outpatient Building. Rancho has a history of excellence and innovation with an approach to care centered on patient and family, making patient involvement key to the success of civic art at this site.

Taking cues from this model, Tubtim led story-gathering workshops with more than 100 community members, patients, Wellness Center members, other Rancho artists, staff and family. During this public engagement phase, she collected quotes that demonstrate how community support is intricately woven into the process of healing and wellness at the Center. The resulting hand-printed and framed statements are included in the mural she created, *The Recovery Garden*. It honors the friendships that blossom there, mainly through patient participation in Rancho's innovative on-site Restorative Garden, which provides garden-related occupational therapy activities for patients. The words of encouragement and messages of hope represent the social support network that nurtures Rancho's recovery ecosystem. Installation of the mural was completed in early May 2021.



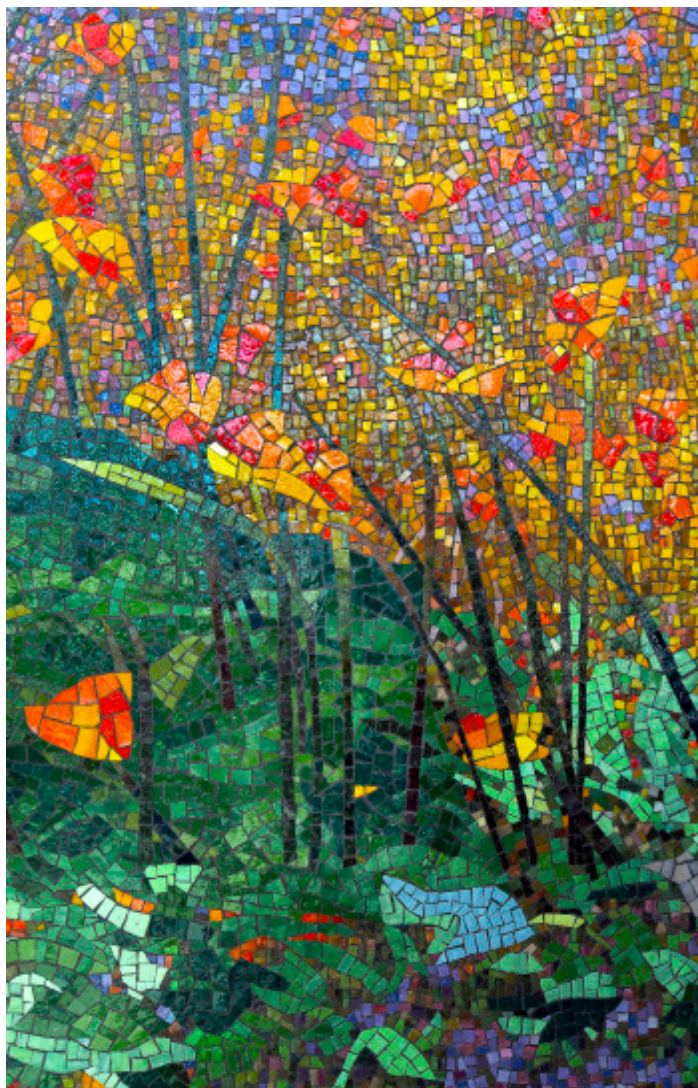
Above: *The Recovery Garden* mural by Hataya Tubtim inspired by occupational therapies at Rancho Los Amigos National Rehabilitation Center, pictured below. Mural photo by Steven Lam.



HIGH DESERT MENTAL HEALTH URGENT CARE CENTER

High Desert Mental Health Urgent Care Center is a 9,900-square-foot mental health facility in Lancaster, California, serving local children, adolescents and adults who may be suffering through a crisis and in need of immediate mental health treatment, and is part of one of the County's first four Restorative Care Village campuses.

Artist Cheryl Molnar was selected to create a two-story mosaic mural for the lobby of the Center intended to inspire a "sense of calm amidst tumult," in the words of the artist. *Birds in Flight* reimagines the natural beauty and complexity of the surrounding region through a scene of abstracted birds flying over a landscape of the High Desert's famed California poppies, rosy sunset and gentle foothills of the Antelope Valley that is meant to be both dreamlike and soothingly familiar.



The artist worked with the master craftspeople at Miotto Mosaic Art Studios to translate her final design into a mosaic mural. The artwork is composed of one hundred thousand hand-cut glass tiles preassembled into small sheets and installed into a grid pattern utilizing special techniques that allow the mural to be safely removed should it later need to be relocated.

Installation of Molnar's mosaic mural was completed in August 2020. The artist also created a corresponding coloring book based on the artwork design, which is now available for distribution to visitors at the Center.

Opposite page: *Birds in Flight* mosaic mural by Cheryl Molnar at High Desert Mental Health Urgent Care Center. Photo by Steve King Architectural Imaging. This page: Miotto Mosaic Art Studios installing the mural.





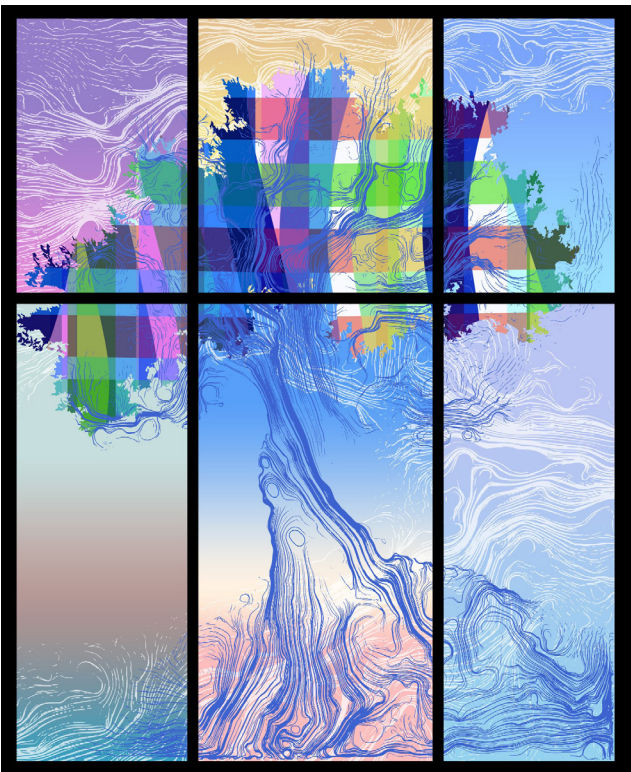
OLIVE VIEW-UCLA MEDICAL CENTER RESTORATIVE CARE VILLAGE

The County is building four of the Country’s first residential mental health and well-being campuses to address a continuum of needs for the population experiencing homelessness. These Restorative Care Villages will provide a new kind of environment for this vulnerable population, one with a comprehensive, holistic approach to the interrelated and complex challenges of homelessness, substance abuse, mental illness, job training/housing, and medical co-morbidity. The Olive View Medical Center campus will include a Mental Health Urgent Care Center, Mental Health Wellness Center, Recuperative Care Center, and Residential Treatment Program, for which five artists were commissioned to create original artworks, described below. Additional art purchases and a publication detailing the Olive View Medical Center projects are also planned.

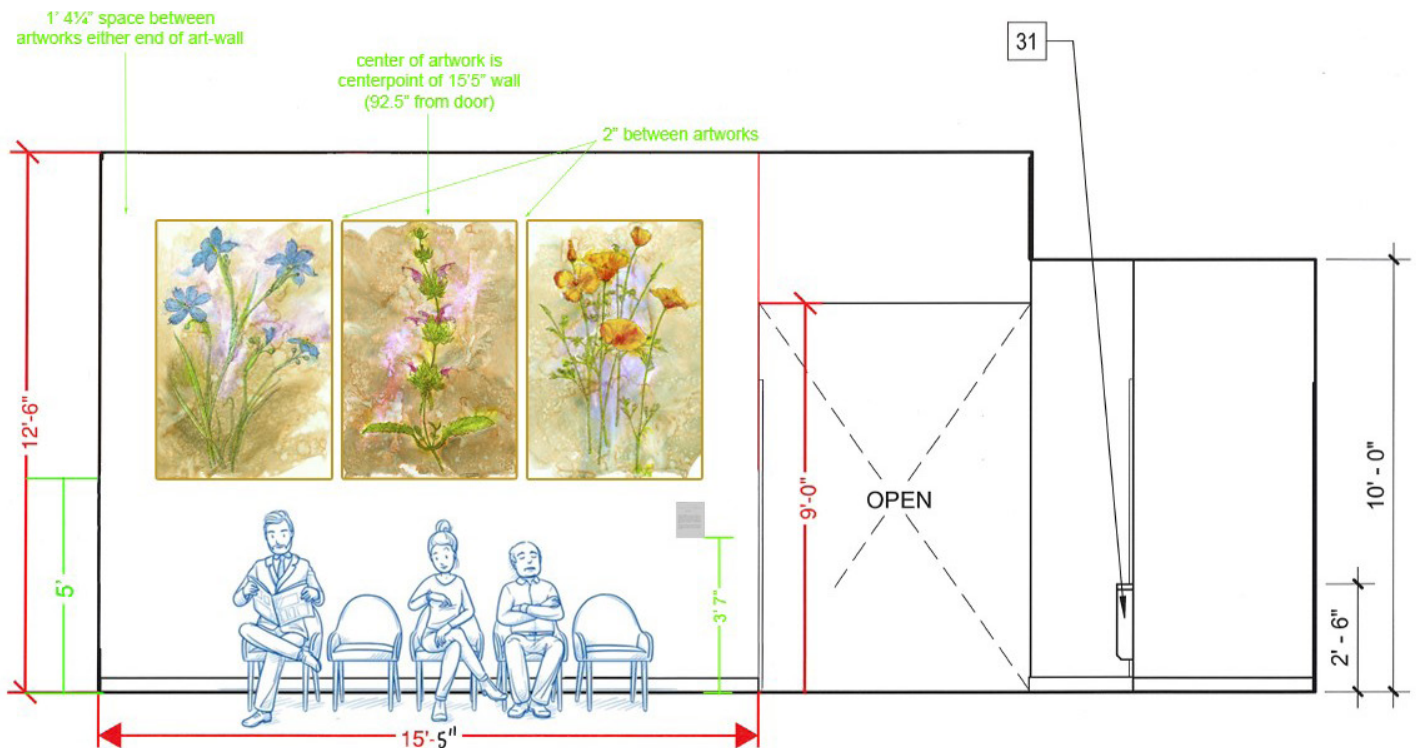
MENTAL HEALTH URGENT CARE CENTER

Artist team Ball-Nogues was selected to create a floor-to-ceiling glass artwork, which will separate the adult and youth areas of the lobby of the Center. The artwork depicts a large olive tree, a historical reference to the olive orchards that give the Olive View Medical Center its name. The tree also refers symbolically to the great strength and resilience of

the Restorative Care Village community and clients. The artists developed custom algorithms to draw the textured bark of the life-size tree. They chose to fabricate the colorful artwork with Judson Studios in fused glass panels delicately layered with silkscreened and sandblasted patterns, which cast a soothing light around the space and create a sense of calm.



Above: rendering of the Restorative Care Village at Olive View-UCLA Medical Center. Right: rendering of artwork by artist team Ball-Nogues.

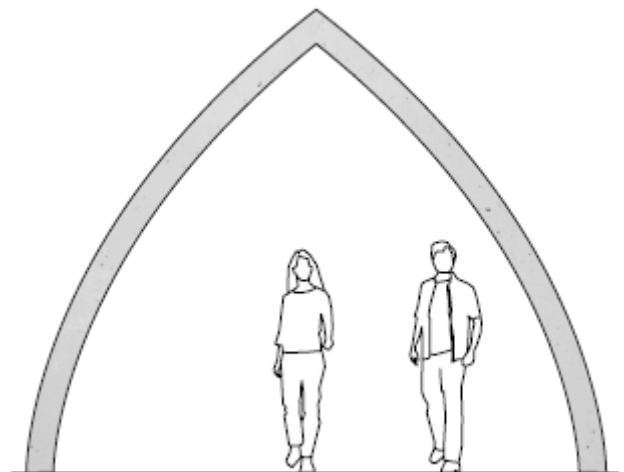


MENTAL HEALTH WELLNESS CENTER

Three artworks by Michael Waugh were selected for the Wellness Center Lobby. This series of large prints entitled *Wild LA Flowers: Blue-eyed Grass, Hummingbird Sage, California Poppies* depicts wildflowers found in and around Sylmar and uses a pastel and terra-cotta color palette which works in concert with the interior colors of the Center. On the surface, the images depict three of the most common wildflowers that can be found in the Los Angeles area. The black lines that outline each of the flowers employ a calligraphic technique known as “micrography”: Upon closer inspection, they’re composed of text from the book *Wild LA*, published by the Natural History Museum of LA County in 2019. Several copies of the *Wild LA* book will be placed in the Lobby for visitors to the facility.

RECUPERATIVE CARE CENTER

Artist Debra Scacco was selected to create a lightweight concrete functional artwork in the form of a pavilion, which is visible from both the Recuperative Care Center and Residential Treatment Program areas. The inhabitable sculpture is an open shell composed of two curved concrete slabs. An irregular pattern of cutouts with colored Plexiglas windows depicts the San Gabriel Mountains. Within and immediately surrounding the work, visitors experience these colored forms as they



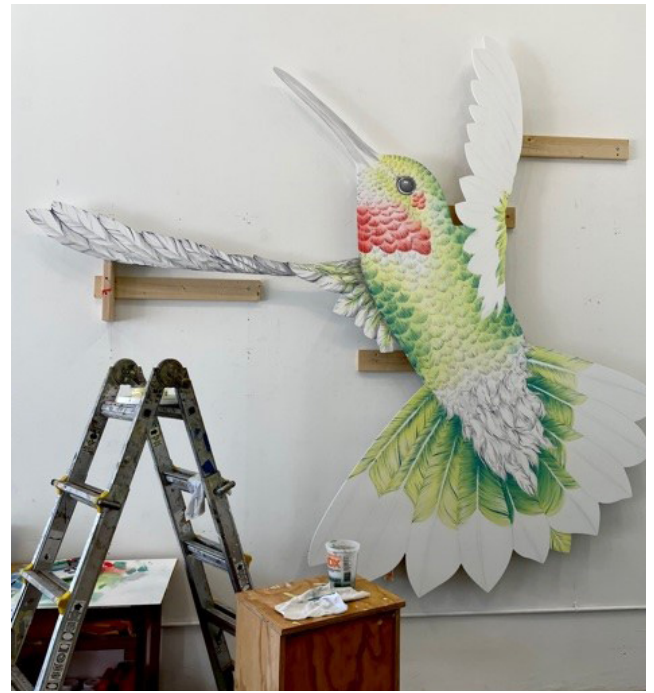
forms as they shift with the position of the sun and project colored shadows throughout the day, creating new views and perspectives from moment to moment. *Here-and-Now Mountain* utilizes the therapeutic qualities of light and nature to complement and assist the extraordinary mission of Olive View Restorative Care Village.

Above: renderings of artworks by Michael Waugh and Debra Scacco at Olive View-UCLA Restorative Care Village.

**RESIDENTIAL TREATMENT PROGRAM D**

Artist Olalekan Jeyifous was selected to create an exterior mural for the Residential Treatment Program buildings most visible upon entry to the site from the Olive View-UCLA campus. Rendered in abstract organic forms, *Canyon Dreamscape* is inspired by the rolling landforms of the Wilson Canyon terrain, which provide the backdrop for the facility, and the drought-resistant landscaping on the residential site. The artwork's color palette is both playful and vibrant as well as tranquil and meditative, to create an overall effect that is welcoming and uplifting. The artist states that he draws inspiration from the immediate landscape and vegetation to express the proven connections between nature, holistic health and well-being, and the ability of restorative spaces to facilitate and encourage tranquility, inspiration and mental wellness.

Above: rendering of *Canyon Dreamscape* by Olalekan Jeyifous. Below: the artist pictured at his home in New York.



RESIDENTIAL TREATMENT PROGRAM A

Artist Renée A. Fox was selected to create an exterior mural for one of the Residential Treatment Program buildings visible upon entry to the site from Bucher Avenue. *Sunset Over the San Gabriel Foothills* is a hand-painted, multi-paneled aluminum mural composed of a joyful array of brightly colored hummingbirds and sunset “clouds” over a horizon mimicking the shape of the foothills. The peaceful, remote site is home to mature trees and a large population of Anna’s hummingbirds, which feature in the mural, encouraging visitors, residents and staff to connect with the surrounding natural environment while promoting an uplifting, healing experience.

Above: artist Renée A. Fox working in her studio on *Sunset Over the San Gabriel Foothills*.



PARK TO PLAYA TRAIL

The Park to Playa Trail is a 13-mile long regional trail that connects a network of trails and parks from the Baldwin Hills Parklands to the Pacific Ocean. Civic Art was pleased to launch two distinct projects in the area.

TEMPORARY MURAL

In January 2020, Civic Art began collaborating with Otis College of Art and Design's Creative Action Program on a site-specific mural designed and painted by Otis students with teaching artist David Russell. The 200-foot-long *Lavender Chiveevi* mural can be experienced along the new Park to Playa Trail, connecting Kenneth Hahn State Recreation Area to the ocean. Situated on an existing concrete swale, the mural design was developed through research and conversation with the Blair Hills community, the Baldwin Hills Conservancy, the Gabrieleno-Tongva Indian Tribe, and the Department of Parks and Recreation.

The *Lavender Chiveevi* mural — *chiveevi* is the Tongva noun for snake — encourages hikers to wend their way through the surrounding landscape. The design actively reimagines the County's roadways as lush trails of local wildflowers in perpetual bloom and pays homage to Indigenous tribes in its use of geometric patterning. The mural becomes a visual trail of local flowers, including California poppies, red velvet yarrow, rock rose and sky lupine. A corresponding poster and activity sheets were also designed for use at Stoneview Nature Center.

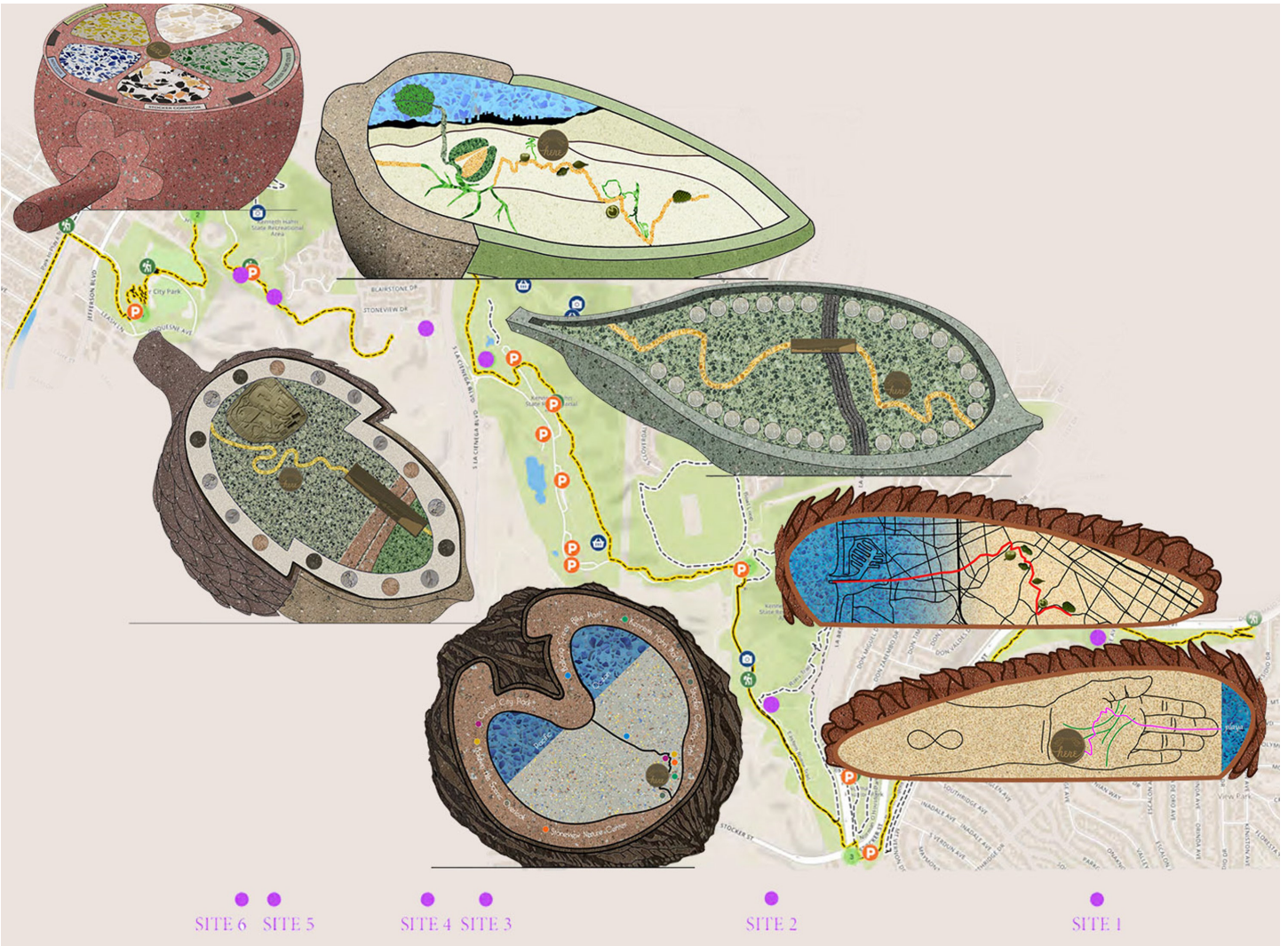
SCENIC OVERLOOK TO STOCKER CORRIDOR

Artist Kim Abeles was selected to create seven sculptures to be placed along the Park to Playa Trail in six distinct locations, leading visitors along the winding trail between the Scenic Overlook to the west and the Stocker Corridor in Kenneth Hahn State Recreation Area to the east.

The artworks, which take the form of seed pods from indigenous California trees (pine, oak, bladderpod, black walnut, and manzanita), were fabricated in concrete, terrazzo and metal for a strong visual presence from afar. Upon closer inspection, the interiors of the seed pods reveal maps informed by the activities, locations and vistas found throughout the trails of the park while speaking to the ideas of growth and the metaphorical journeys that visitors experience to connect with nature in our urban setting.



Top: temporary mural painted by Otis College students. Photo by David Russel. Above: seed pod mold by artist Kim Abeles.



Top: temporary mural painted by Otis College students. Photo by David Russel. Above: rendering of artwork by Kim Abeles.



LOS NIETOS COMMUNITY SENIOR CENTER ART PURCHASES

The Los Nietos Community and Senior Center, formerly Los Nietos Library, was rededicated as a Community and Senior Center in 2017. As part of the renovation plans, funding was allocated to purchase artworks for the Center. A selection committee was convened to select artworks for purchase from forty-six potential choices representing nine established and emerging artists.

Twelve two-dimensional artworks, including paintings and limited edition prints, were selected to be placed in the Center's entrance corridor and community room. The artworks consist of figurative works reflecting a diversity of ages in family-friendly depictions of community life and activities consistent with the Center's programming. Selected artworks were created by Wayne Healy, Pola Lopez, Laura Vazquez Rodriguez, and Andrea Ramirez "Mextica."



Left: Wayne Healy (b. 1946), *Tea for Two*, mono-silkscreen on paper, 20 x 26," 1998. Right: Pola Lopez (b. 1954), *Mujer Indigena*, acrylic on canvas, 20 x 24," 2019.

Wayne Healy grew up in East Los Angeles, where political events in the 1960s stimulated his commitment to creating socially and culturally relevant public art. In 1975, Healy reunited with grade school friend and fellow artist David Botello to establish the public art team East Los Streetscapers (ELS), going on to paint dozens of murals and complete numerous multimedia public art projects throughout the United States and Europe for more than two decades. In his solo practice, Healy uses drawing, serigraph and mono-silkscreen painting and etching to capture universal themes through the depiction of everyday life. His artwork is noted for its skillful draftsmanship, energetic style, dramatically angled compositions and bold colors.





Pola Lopez is a self-taught artist working in Santa Fe, New Mexico. Early in her career, Lopez was an active member of La Cofradía de Arte y Artesanos, an organization and brotherhood of Hispano artists promoting awareness and opportunities to share their creative cultural work in a market where they were largely underserved and underrecognized. From 2003-2020, Lopez worked in Los Angeles where she cultivated a deep connection to community and established 2 Tracks Studio, a public studio and exhibition space in Highland Park. As a professional muralist and mentor, she has completed several student-assisted murals with at-risk youth, in addition to sixteen of her own community mural projects throughout LA. Today she is recognized as one of the leading contemporary Chicana artists in the U.S., honored as the “official portrait artist” of her native New Mexico to the White House in 2006. Lopez’s vibrant abstract and figurative paintings include an eclectic mix of traditional symbols drawn from her Southwest heritage combined with an Indigenous feminine perspective.

Laura Vazquez Rodriguez was born in Los Angeles and raised in the small community of Pico Rivera. She received a bachelor’s degree in fine arts, specializing in Illustration, from California State University, Long Beach. Working primarily with acrylic on canvas and carved wood panels, Rodriguez is best known for using strong and continuous lines to construct graphic images centered on themes of spirituality, life and death, love and healing, and mother and child. Her artwork has been showcased on book covers, educational posters, documentaries and periodicals,



and is included in numerous private and public art collections. She has created art for CABE (California Association of Bilingual Education) and AMAE (Association of Mexican American Educators). Her most recent works include a logo for the City of Los Angeles and the cover art for Roberto Rodriguez’s book *Our Sacred Maíz Is Our Mother: Indigeneity and Belonging in the Americas*.

Andrea Ramirez “Mextica” is a community-taught painter working in Los Angeles. Inspired by the *papel amate* artwork of Otomi and Nahua traditions and the *carretas* of Costa Rica that she grew up with, Ramirez paints the community, culture and love surrounding her. Working with the natural colors and texture of

papel amate’s bark paper and a flat, elongated perspective, Ramirez’s acrylic paintings seek to capture the everyday activities of her community, such as getting tacos from the neighborhood *taquero* or strolling Mariachi Plaza in Boyle Heights. It is important to the artist that her audience see themselves positively represented in her paintings. Their memories of being in the subjects’ locations make the paintings come to life and feel like home.

Top Right: Laura Vazquez Rodriguez (b. 1970), *The Nap*, acrylic on canvas, 11 x 17,” 2017. Above: Andrea Ramirez “Mextica” (b. 1981), *Rebozo Workshop*, acrylic on canvas board, 18 x 24,” 2018.



COUNTY COLLECTION

LA County's Civic Art Collection comprises 526 contemporary and historic permanent artworks located across County-owned property and acquired through art purchases, donations, and original commissions. Special care and conservation needs often distinguish managing a public art collection from that of a museum or private art collection because most of these artworks are displayed outdoors or in high-traffic public spaces.

MEMORY AND FUTURITY IN YAANGA

INDIGENOUS ART AND EDUCATIONAL ACTIVITIES

In July 2020, the Department of Arts and Culture put out a call for artists, in collaboration with the Los Angeles City/County Native American Indian Commission, to create a temporary artwork or program in response to the November 2018 removal of the Christopher Columbus statue at Grand Park in downtown Los Angeles. Two projects were selected: an engagement program by the Puvungna Collective and a temporary art installation by Mercedes Dorame.

In the words of the artists:

“It is imperative that those concerned with social justice strip away that veneer of objectivity to challenge, interrogate and sometimes invert the social relations and structures of power immortalized in public art and monuments. To re-signify public spaces is to conjure new opportunities to imagine something different. Something better. Something more intimately inclusive of the land and all of its people — past, present, and future.”

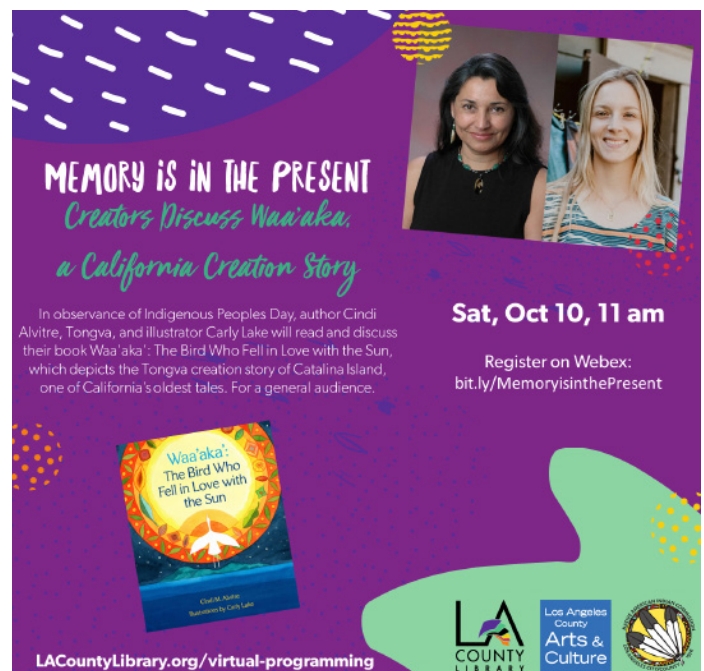
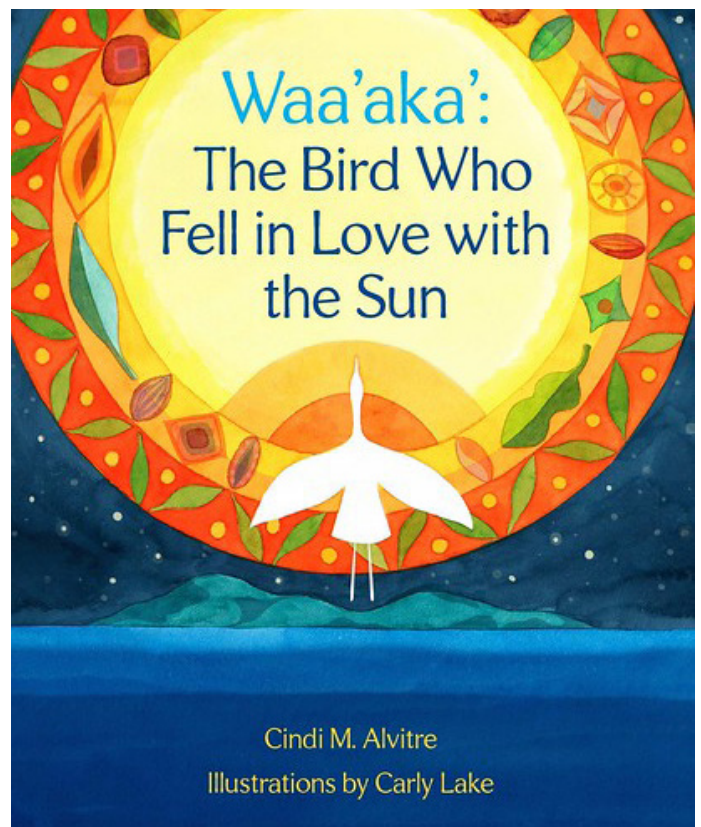
Previous page: materials for a Tongva blessing. This page: performance activation and Tongva blessing of artworks by Puvungna Collective and Mercedes Dorame in Grand Park. Photos by Erick Iñiguez and Evelyn Hang Yin.



MEMORY IS IN THE PRESENT... is a collaboration between Puvungna Collective artists Cindi Alvitre, Carly Lake and Scott Wilson. It reflects the convergence of a Tongva storyteller, an illustrator and a cultural anthropologist, who have come together to tell the *Puvungna* creation narrative accurately, and in a way that honors the culture from which it originates. The resulting two projects — a traditional picture book and a 14-minute virtual reality film — illuminate this story in a transformative way intended to tie people back to the present place and moment.



Birthplace of the People: A Tongva Origin Story is a 14-minute 360 virtual reality film that tells the story of the Tongva god Weywot and the creation of the world. The film illustrates the birth of the Tongva people on the site of Puvungna, what is now the California State University, Long Beach campus. *Puvungna* — which means place of the great gathering—was the site of the world’s creation, and where its first death and funeral took place. This 360-degree VR experience immerses the viewer in the spiritual place of Los Angeles’ original inhabitants, in a mythological space that transcends time. By connecting this physical place to its spiritual past, the film is intended to remind us of histories we may have forgotten, or may have never known. Cindi Alvitre narrated the film, Carly Lake produced the artwork using Tilt Brush technology to paint in the 3D virtual space, and Scott Wilson directed and edited the film.



The picture book *Waa'aka': The Bird Who Fell in Love With the Sun* tells the story of a beautiful bird who falls in love with Tamet, the sun, and tries to follow him up to the sky. *Waa'aka'* was written by Cindi Alvitre and illustrated by Carly Lake, and is available at Heyday Publishers.



WEE NEHIINKEM —ALL MY RELATIVES

by Tongva artist Mercedes Dorame, was a temporary installation created to coincide with the programming of *Memory Is in the Present...* It was on view from November 21, 2020, to January 4, 2021, in Grand Park. Working with the Tongva origin story of Taraaxashom or the Pleiades, Dorame created star maps inviting the viewer to look up and observe the movement of celestial bodies, to remember and to imagine, while also inviting the viewer to look down, to acknowledge they are standing on Tongva land, and reawaken a connection to this history and envision a more equitable future.



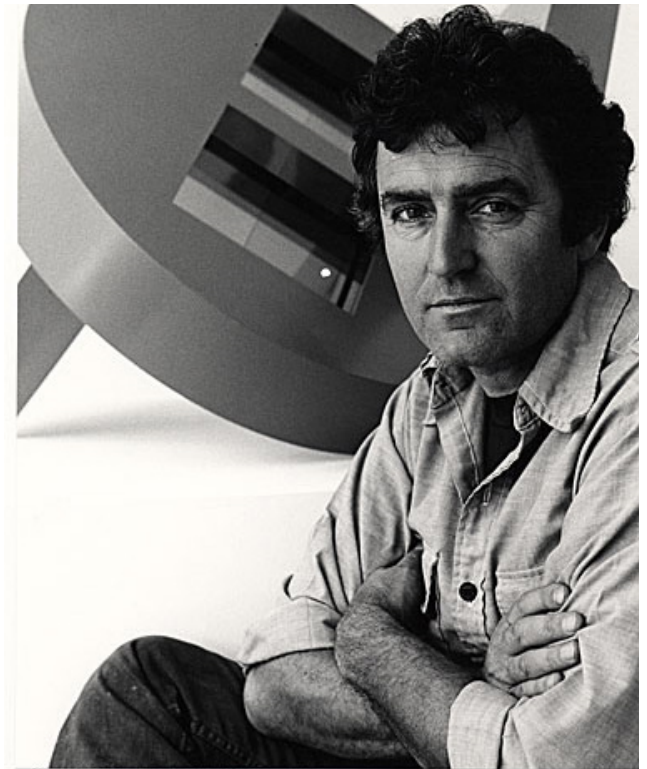
This page: details of the star maps by Mercedes Dorame and Tongva blessing of the artwork in Grand Park. Photos by Erick Iñiguez and Evelyn Hang Yin.
Opposite page: book cover by Carly Lake. Event graphics by Laleña Vellanoweth.

NORWALK LIBRARY

FLETCHER BENTON DONATION

Civic Art was pleased to manage the donation process for *Folded Circle Ring Interlocking S* by artist Fletcher Benton to the County's Civic Art Collection.

The sculpture was donated by private collector Kevin Burke and installed in April 2021 at the front entrance of the newly renovated Norwalk Library to be enjoyed by all visitors. Benton was an American sculptor who practiced his art in Northern California for most of his career. *Folded Circle Ring Interlocking S* is an excellent representation of Benton's large-scale, abstract, kinetic steel sculptures, and a wonderful addition to the Civic Art Collection.



Right: artist Fletcher Benton. Below: *Folded Circle Ring Interlocking S* at Norwalk Library.





LOS NIETOS COMMUNITY SENIOR CENTER ARTWORK CONSERVATION

Mexican Tree of Life by Barbara Beall.

The Los Nietos Community and Senior Center, formerly Los Nietos Library, was rededicated as a Community and Senior Center in 2017. As part of the renovation plans for the Center, Civic Art allocated funds to conserve *Mexican Tree of Life*, by artist Barbara Beall. Conservation of the mural was completed in August 2020. The tree of life is a popular image in Mexican folk art – its origins arising from a combination of pre-colonial ceramic craft and post-colonial biblical imagery of the Garden of Eden. Mexican ceramic artists, particularly in the highland region of Metepec, create highly intricate trees of life that showcase their skill. The tree of life is often used to adorn a communal event such as a wedding or a funeral.

PROFESSIONAL DEVELOPMENT

In October 2020, Civic Art was pleased to host its first conservation themed Arts Tune-Up event. Workshops included various presentations by professional art conservators from across the field as they shared their knowledge about how to plan for the long-term care of artists' artwork in a variety of contexts.

Over three days, artists were invited to attend seven free workshops covering care guidance, medium-specific information and best practices to help them mitigate risks while maintaining their original artistic intent.



**If These Walls Could Talk:
Conservation Fundamentals for
Creating and Preserving Murals**
Presented by Samantha Emmanuel & Kiernan Graves

LA COUNTY ARTS TUNE-UP: PRESERVATION TIPS FOR ARTISTS

PRESERVATION TIPS FOR ARTISTS

October 21-23, 2020
Virtual Speaker Series

Join us in conversation with professional art conservators from across the field as they share their knowledge about how to plan for the long-term care of your artwork in a variety of contexts. Over seven different sessions, presenters will cover both general and medium specific information, and best practices that will help you mitigate risks while maintaining your original artistic intent.

To register, <https://www.lacountyarts.org/calendar/arts-tune-materials-conservation>

ARTS TUNE-UP



LaStarsha McGarity



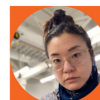
Samantha Emmanuel



Kiernan Graves



Erin Jue



Jennifer Kim



Shannon Brogdon-Grantham



Lily Doan



Nylah Byrd



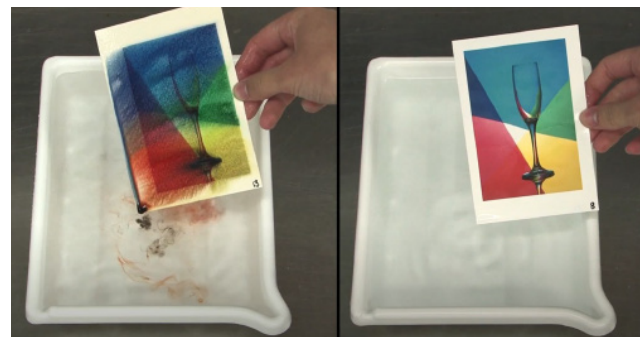
Magdalena Solano



Nicole Alvarado



Jacklyn Chi



PRESERVATION TIPS FOR ARTISTS

ARTS TUNE-UP



Unlikely Collaborators: How Conservators Can Support Artists' Practices

Presented by Shannon Brogdon-Grantham

Photograph and Paper Conservator at the Smithsonian's
Museum Conservation Institute

Thursday, October 22
11:00am – 12:00pm PST

Art Conservation is likened to magic behind-the-scenes. Public awareness of the field is limited, but the internet, social media, and web series like this Arts Tune-Up have allowed conservators to "pull back the curtain" revealing this often-mysterious profession. In this session, Shannon will present a short overview on the work conservators do and how they aid artists in fulfilling their artistic intent, beyond the preservation of a work of art. Specifically, conservators and artists can forge a harmonious partnership through artist interviews, collaborative research projects, decolonization of art spaces, and other ways to be highlighted in this session.

For more information and to register, please visit
<https://www.lacountyarts.org/calendar/arts-tune-materials-conservation>



This page: select presentation images courtesy of the facilitators.
Event graphics by Laleña Vellanoweth. Bottom right: artwork by
Jürgen Hans.

BOARD OF SUPERVISORS

Supervisor Hilda L. Solis, First District

Supervisor Mark Ridley-Thomas, Second District (thru 12.6.20)

Supervisor Holly J. Mitchell, Second District (began 12.6.20)

Supervisor Sheila Kuehl, Third District

Supervisor Janice Hahn, Fourth District

Supervisor Kathryn Barger, Fifth District

ARTS COMMISSIONERS

Eric Hanks, 2020-2021

Constance Jolcuvar, 2021-2022

President

Constance Jolcuvar, 2020-2021

Darnella Davidson, 2021-2022

Vice President

Darnella Davidson, 2020-2021

Liane Weintraub, 2021-2022

Secretary

Helen Hernandez, 2020-2021

Eric Hanks, 2021-2022

Immediate Past President

Liane Weintraub, 2020-2021

Executive Committee

Norma Provencio Pichardo (thru 6.28.21)

Tim Dang

Pamela Bright-Moon

Hope Warshaw (thru 2.12.21)

Rosalind Wyman

Madeline Di Nonno

Eric Eisenberg

Liz Schindler Johnson

Alis Clausen Odenthal

Jennifer Price-Letscher (appointed 1.21.21)

CIVIC ART COMMITTEE

Eric Eisenberg

Alis Clausen Odenthal

Constance Jolcuvar

Hope Warschaw

Norma Provencio Pichardo

DEPARTMENT OF ARTS AND CULTURE

Kristin Sakoda

Director

Heather Rigby

Chief Deputy

Kristin Friedrich

*Director of Communications
and Public Affairs*

CIVIC ART DIVISION

Grace Ramirez Gaston

Director

Lida Venieri

Finance and Operations Manager

Laleña Vellanoweth

Conservation and Collections Manager

Caroline Kerrigan Lerch

Project Manager

Iris Anna Regn

Project Manager

Pat Gomez

Project Manager

Ottavia Crucitti

Project Manager

Brianna MacGillivray

Program Coordinator

FY 2020-21 Annual Report Contributors

Photos by Civic Art staff unless otherwise indicated

Design and Editorial by Brianna MacGillivray

Copy-editing by Sheri Linden

Los Angeles
County
**Arts &
Culture**



FIRST DISTRICT

3RD AND DANGLER DEVELOPMENT

4639-4655 E. 3rd St., Los Angeles, CA 90022
DEPARTMENT: Los Angeles County Development Authority
BUDGET: \$75,000
FUNDING SOURCE: Civic Art Funds
ARTIST: Stephanie Mercado
STATUS: Design

4TH AND HEWITT

321 S. Hewitt St. and 813 E.4th Pl., Los Angeles, CA 90117
DEPARTMENTS: Chief Executive Office, Public Social Services
BUDGET: \$1,000,000
FUNDING SOURCE: Civic Art Funds
ARTIST: TBD
STATUS: Scoping

ANTHONY QUINN LIBRARY – QUEZADA MURAL CONSERVATION

3965 E. Cesar Chavez Ave., Los Angeles, CA 90063
DEPARTMENT: Library
BUDGET: \$4,300
FUNDING SOURCE: Library
ARTISTS: Josefina Quezada, Teresa Chacon, Herlinda Bustamente, Rosa M. Quezada, Patricia Rivera, Thelma Heavilin Sanchez, Vivian Sanchez, Susan Valdez Torres
CONSERVATOR: May & Burch
STATUS: Closeout

BOB HOPE PATRIOTIC HALL – ACKERMAN (DOOLITTLE) MURAL CONSERVATION

1816 S Figueroa St., Los Angeles, CA 90015
DEPARTMENTS: Military and Veteran Affairs, Internal Services
BUDGET: \$34,600
FUNDING SOURCE: Internal Services
ARTIST: Frank Ackerman
CONSERVATOR: Site and Studio Conservation
STATUS: Planning

CALTRANS PARK – 28TH AND HOPE

2707 S. Grand Ave., Los Angeles, CA 90007
DEPARTMENT: Public Social Services
BUDGET: TBD
FUNDING SOURCE: TBD
ARTIST: TBD
STATUS: Scoping

CITY TERRACE – BOTELLO MURAL CONSERVATION

1126 N. Hazard Ave., Los Angeles, CA 90063
DEPARTMENT: Parks and Recreation
BUDGET: \$32,000
FUNDING SOURCE: Civic Art Funds
ARTIST: Paul Botello
CONSERVATOR: Site and Studio Conservation
STATUS: Scoping

CLARA SHORTRIDGE FOLTZ CRIMINAL JUSTICE CENTER – PUBLIC DEFENDER OFFICE 19TH FLOOR

210 W. Temple St., Los Angeles, CA 90012
DEPARTMENT: Public Defender
BUDGET: TBD
FUNDING SOURCE: TBD
ARTIST: TBD
STATUS: Scoping

CLARA SHORTRIDGE FOLTZ CRIMINAL JUSTICE CENTER – SCHWARTZENBERG TAPESTRY CONSERVATION

210 W. Temple St., Los Angeles, CA 90012
DEPARTMENT: State Courts
BUDGET: \$3,000
FUNDING SOURCE: Civic Art Funds
ARTIST: Susan Schwartzberg
CONSERVATOR: TBD
STATUS: Scoping

COVID-19 MEMORIAL

LOCATION: TBD
DEPARTMENT: First District
BUDGET: TBD
FUNDING SOURCE: TBD
ARTIST: TBD
STATUS: Scoping

DCBA HEADQUARTERS – LOBBY

500 W. Temple St., Room B-96, Los Angeles, CA 90012
DEPARTMENT: Consumer and Business Affairs
BUDGET: \$77,000
FUNDING SOURCES: Civic Art Funds, Consumer and Business Affairs
ARTIST: TBD
STATUS: Closeout

DOROTHY KIRBY CENTER – STAINED GLASS ACCESSION

1500 S. McDonnell Ave., Commerce, CA 90040
DEPARTMENT: Probation
BUDGET: \$14,000
FUNDING SOURCE: Civic Art Funds
ARTIST: Unknown
STATUS: Planning

PROJECTS LIST

FIRST DISTRICT

DPSS ARTS DISTRICT – MARTIN MURAL RE-FABRICATION

813 E. 4th Pl., Los Angeles, CA 90013
DEPARTMENT: Public Social Services
BUDGET: \$5,000
FUNDING SOURCE: Civic Art Funds
ARTIST: Damon Martin
STATUS: Planning

EAST LOS ANGELES SUSTAINABLE MEDIAN STORMWATER CAPTURE

LOCATION: Various intersections of East Los Angeles
DEPARTMENT: Public Works
BUDGET: \$30,000
FUNDING SOURCE: Civic Art Funds
ARTIST: TBD
STATUS: Planning

EDELMAN CHILDREN'S COURT – MURALS PROJECT

201 Centre Plaza Dr. #2700, Monterey Park, CA 91754
DEPARTMENT: Children and Family Services
BUDGET: \$57,500
FUNDING SOURCE: Children and Family Services
ARTIST: Andrew Hem
STATUS: Closeout

FORT MOORE PIONEER MEMORIAL FORT MOORE – GILDED WALL CONSERVATION

501 N. Hill St., Los Angeles, CA 90012
DEPARTMENT: Chief Executive Office
BUDGET: \$224,000
FUNDING SOURCE: Civic Art Funds
ARTIST: Henry Kreis
CONSERVATOR: Williams Art Conservation
STATUS: Punch List

FORT MOORE – BENCHES REPLACEMENT

501 N. Hill St., Los Angeles, CA 90012
DEPARTMENT: Chief Executive Office
BUDGET: \$20,800
FUNDING SOURCE: Civic Art Funds
ARTIST: Henry Kreis
CONSERVATOR: Williams Art Conservation
STATUS: Installation

GRAND PARK – INDIGENOUS ART AND EDUCATIONAL ACTIVITY

200 N. Grand Ave., Los Angeles, CA 90012
DEPARTMENT: Arts and Culture
BUDGET: \$24,300
FUNDING SOURCE: Civic Art Funds
ARTISTS: Cindi Alvitre, Carly Lake, Scott Wilson, Mercedes Dorame
STATUS: Ongoing

GRAND PARK – VIETNAM MEMORIAL CONSERVATION

200 N. Grand Ave., Los Angeles, CA 90012
DEPARTMENT: Internal Services
BUDGET: \$1,000
FUNDING SOURCE: Civic Art Funds
ARTIST: Frank Ackerman
CONSERVATOR: Silverlake Conservation
STATUS: Closeout

HALL OF RECORDS – PUBLIC DEFENDER OFFICE 6TH FLOOR

320 West Temple St., Los Angeles, CA 90012
DEPARTMENT: Public Defender
BUDGET: TBD
FUNDING SOURCE: TBD
ARTIST: TBD
STATUS: Planning

HALL OF RECORDS – REGIONAL PLANNING OFFICE 13TH FLOOR

320 West Temple St., Los Angeles, CA 90012
DEPARTMENT: Regional Planning
BUDGET: TBD
FUNDING SOURCE: Civic Art Funds
ARTIST: TBD
STATUS: Planning

HOUDON (GEORGE WASHINGTON) STATUE RELOCATION AND STORAGE

200 N. Grand Ave., Los Angeles, CA 90012
DEPARTMENT: Internal Services
BUDGET: \$8,100
FUNDING SOURCE: Civic Art Funds
ARTIST: Jean-Antoine Houdon
STATUS: Planning

LAC+USC – BALLIN (MEDICAL SCIENCES) FRESCO CONSERVATION

2051 Marengo St., Los Angeles, CA 90033
DEPARTMENT: Health Services
BUDGET: \$195,000
FUNDING SOURCES: Civic Art Funds, Health Services
ARTIST: Hugo Ballin
CONSERVATOR: Aneta Zebala Paintings Conservation
STATUS: Closeout

LAC+USC – HOWE (BARODA WALL) SCULPTURE DONATION

1200 N. State St., Los Angeles, CA 90033
DEPARTMENT: Health Services
BUDGET: \$54,000
FUNDING SOURCES: Civic Art Funds, Donation
ARTIST: Brad Howe
DONOR: David Bohnett
STATUS: Installation

FIRST DISTRICT

LAC+USC – CHILD CARE CENTER

1200 N. State St., Los Angeles, 90033
DEPARTMENT: Health Services
BUDGET: \$79,000
FUNDING SOURCE: Civic Art Funds
ARTIST: Andrew Hem
STATUS: Fabrication

LAC+USC – COERCED STERILIZATION RECOGNITION PROJECT

2051 Marengo St., Los Angeles, CA 90033
DEPARTMENT: Health Services
BUDGET: \$132,000
FUNDING SOURCES: Health Services, Civic Art Funds
ARTIST: Phung Huynh
STATUS: Installation

LAC+USC RESTORATIVE CARE VILLAGE, PHASE I

LAC+USC – ART PURCHASE

1774 Zonal Ave., Los Angeles, CA 90033
DEPARTMENTS: Health Services, Mental Health
BUDGET: \$25,000
FUNDING SOURCE: Civic Art Funds
ARTIST: TBD
STATUS: Planning

LAC+USC – RECUPERATIVE CARE CENTER PROGRAM

1774 Zonal Ave., Los Angeles, CA 90033
DEPARTMENT: Health Services
BUDGET: \$137,200
FUNDING SOURCE: Civic Art Funds
ARTIST: Star Montana
STATUS: Installation

LAC+USC – RESIDENTIAL TREATMENT PROGRAM A

1774 Zonal Ave., Los Angeles, CA 90033
DEPARTMENT: Mental Health
BUDGET: \$137,900
FUNDING SOURCE: Civic Art Funds
ARTIST: Lorenzo Hurtado
STATUS: Installation

LAC+USC – RESIDENTIAL TREATMENT PROGRAM B

1774 Zonal Ave., Los Angeles, CA 90033
DEPARTMENT: Mental Health
BUDGET: \$137,400
FUNDING SOURCE: Civic Art Funds
ARTIST: Jamie Scholnick
STATUS: Installation

LAC+USC – RESIDENTIAL TREATMENT PROGRAM C

1774 Zonal Ave., Los Angeles, CA 90033
DEPARTMENT: Mental Health
BUDGET: \$137,400
FUNDING SOURCE: Civic Art Funds
ARTIST: Patrick Martinez
STATUS: Installation

LAC+USC RESTORATIVE CARE VILLAGE, PHASE II

LAC+USC – GENERAL HOSPITAL

1774 Zonal Ave., Los Angeles, CA 90033
DEPARTMENT: Health Services
BUDGET: \$1,000,000
FUNDING SOURCE: Civic Art Funds
ARTIST: TBD
STATUS: Scoping

LAC+USC – MENTAL HEALTH OUTPATIENT AND WELLNESS CENTER

1774 Zonal Ave., Los Angeles, CA 90033
DEPARTMENT: Health Services
BUDGET: \$1,000,000
FUNDING SOURCE: Civic Art Funds
ARTIST: TBD
STATUS: Scoping

LAC+USC – MENTAL HEALTH URGENT CARE CENTER

1774 Zonal Ave., Los Angeles, CA 90033
DEPARTMENT: Health Services
BUDGET: \$1,000,000
FUNDING SOURCE: Civic Art Funds
ARTIST: TBD
STATUS: Planning

LAC+USC – RECOVERY AND RESPITE CENTER

1774 Zonal Ave., Los Angeles, CA 90033
DEPARTMENT: Health Services
BUDGET: \$1,000,000
FUNDING SOURCE: Civic Art Funds
ARTIST: TBD
STATUS: Scoping

LA PUENTE ARTS PROGRAMMING

16005 Central Ave., La Puente, CA 91744; 510 Vine-
land Ave., Bassett, CA 91746
DEPARTMENTS: Parks and Recreation, Public Works
BUDGET: \$55,000
FUNDING SOURCE: Civic Art Funds
ARTIST: Álvaro Márquez
STATUS: Design

LA PUENTE ENHANCED ONE-STOP DEVELOPMENT CENTER

16005 Central Ave., La Puente, CA 91744
DEPARTMENT: Public Works
BUDGET: \$192,000
FUNDING SOURCE: Civic Art Funds
ARTIST: Carly Lake
STATUS: Design

PROJECTS LIST

FIRST DISTRICT

PEROTTI (CHRISTOPHER COLUMBUS) STATUE RELOCATION AND DEACCESSION

200 N. Grand Ave., Los Angeles, CA 90012
DEPARTMENT: Internal Services
BUDGET: \$20,000
FUNDING SOURCE: Civic Art Funds
ARTIST: Paolo Perotti
STATUS: On Hold

RE: PLAY PROGRAM – BELVEDERE COMMUNITY REGIONAL PARK

4914 East Cesar E Chavez Ave., Los Angeles, CA 90022
DEPARTMENT: Parks and Recreation
BUDGET: TBD
FUNDING SOURCE: TBD
ARTIST: TBD
STATUS: Scoping

RE: PLAY PROGRAM – WHITTIER NARROWS RECREATION AREA

750 S Santa Anita Ave., South El Monte, CA 91733
DEPARTMENT: Parks and Recreation
BUDGET: TBD
FUNDING SOURCE: TBD
ARTIST: TBD
STATUS: Scoping

RUBEN F. SALAZAR PARK – BOTELLO MURAL CONSERVATION

3864 Whittier Blvd., Los Angeles, CA 90023
DEPARTMENT: Parks and Recreation
BUDGET: \$13,900
FUNDING SOURCE: Civic Art Funds
ARTIST: Paul Botello
CONSERVATOR: Site and Studio Conservation
STATUS: Closeout

SAN GABRIEL VALLEY AQUATIC CENTER

635 N. California Ave., La Puente, CA 91744
DEPARTMENT: Parks and Recreation
BUDGET: TBD
FUNDING SOURCE: TBD
ARTIST: TBD
STATUS: Planning

WALNUT POCKET PARK

2603 Grand Ave., Walnut Park, CA 90255
DEPARTMENT: Parks and Recreation
BUDGET: \$34,000
FUNDING SOURCE: Civic Art Funds
ARTIST: TBD
STATUS: Planning

SECOND DISTRICT

92ND STREET LINEAR PARK

92nd Street between Graham Avenue and South Fir Avenue, Los Angeles, CA 90002
DEPARTMENT: Parks and Recreation
BUDGET: \$56,000
FUNDING SOURCE: Civic Art Funds
ARTIST: TBD
STATUS: Scoping

95TH AND NORMANDIE POCKET PARK

9501 S. Normandie Ave., Los Angeles, CA 90044
DEPARTMENT: Development Authority
BUDGET: \$12,000
FUNDING SOURCE: Civic Art Funds
ARTIST: TBD
STATUS: Scoping

3965 SOUTH VERMONT AVENUE – CS-AIR

550 S. Vermont Ave., Los Angeles, CA 90037
DEPARTMENT: Probation
BUDGET: \$82,500
FUNDING SOURCE: Civic Art Funds
ARTIST: Homeboy Industries, Somos LA Arte
STATUS: Active

3965 SOUTH VERMONT AVENUE – MAINTENANCE PROGRAM

550 S. Vermont Ave., Los Angeles, CA 90037
DEPARTMENT: Probation
BUDGET: \$30,000
FUNDING SOURCE: Civic Art Funds
ARTIST: Olalekan Jeyifous
STATUS: Fabrication

3965 SOUTH VERMONT AVENUE – VINYL MURALS

3965 S. Vermont Ave., Los Angeles, CA 90037
DEPARTMENT: Probation
BUDGET: \$230,300
FUNDING SOURCE: Civic Art Funds
ARTIST: Olalekan Jeyifous
STATUS: Closeout

ATHENS PARK AQUATICS FACILITY

12603 S. Broadway, Los Angeles, CA 90061
DEPARTMENT: Parks and Recreation
BUDGET: \$25,000
FUNDING SOURCE: Civic Art Funds
ARTIST: TBD
STATUS: Scoping

FLORENCE LIBRARY – MAGALLANES MURAL DEACCESSION

1616 E. Florence Ave., Los Angeles, CA 90001
DEPARTMENT: Library
BUDGET: N/A
FUNDING SOURCE: N/A
ARTIST: Oscar Magallanes
STATUS: Active

SECOND DISTRICT

GOLDEN STATE MUTUAL ART COLLECTION

500 W. Temple St., Los Angeles, CA 90012
DEPARTMENT: Second District
BUDGET: \$249,500
FUNDING SOURCE: Civic Art Funds
ARTIST: N/A
STATUS: Installation

HARBOR-UCLA – INPATIENT BUILDING

1000 W. Carson St., Torrance, CA 90502
DEPARTMENT: Health Services
BUDGET: \$1,000,000
FUNDING SOURCE: Civic Art Funds
ARTIST: TBD
STATUS: Planning

HARBOR-UCLA – MENTAL HEALTH OUTPATIENT CLINIC

1000 W. Carson St., Torrance, CA 90502
DEPARTMENT: Health Services
BUDGET: TBD
FUNDING SOURCE: TBD
ARTIST: TBD
STATUS: Scoping

HARBOR-UCLA – OUTPATIENT BUILDING

1000 W. Carson St., Torrance, CA 90502
DEPARTMENT: Health Services
BUDGET: \$1,000,000
FUNDING SOURCE: Civic Art Funds
ARTIST: TBD
STATUS: Planning

KENNETH HAHN STATE RECREATION AREA – GREEN VALLEY CONNECTION

4100 S. La Cienega Blvd., Los Angeles, CA 90059
DEPARTMENT: Parks and Recreation
BUDGET: \$7,000
FUNDING SOURCE: Civic Art Funds
ARTIST: TBD
STATUS: Scoping

LENNOX LIBRARY – RICHARDSON STAINED GLASS CONSERVATION

4359 S. Lennox Blvd., Los Angeles, CA 90304
DEPARTMENT: Library
BUDGET: \$800
FUNDING SOURCE: Civic Art Funds
ARTIST: TBD
STATUS: Active

MAGIC JOHNSON PARK – ARTS PROGRAMMING

905 E. El Segundo Blvd., Los Angeles, CA 90059
DEPARTMENT: Parks and Recreation
BUDGET: \$50,000
FUNDING SOURCE: Civic Art Funds
ARTIST: Sandra de la Loza
STATUS: Planning

MAGIC JOHNSON PARK – CS-AIR

905 E. El Segundo Blvd., Los Angeles, CA 90059
DEPARTMENT: Parks and Recreation
BUDGET: \$82,500
FUNDING SOURCE: Civic Art Funds
ARTIST: Fabian Debora
STATUS: Active

MAGIC JOHNSON PARK – MULTIPURPOSE ROOM

905 E. El Segundo Blvd., Los Angeles, CA 90059
DEPARTMENT: Parks and Recreation
BUDGET: \$100,000
FUNDING SOURCE: Civic Art Funds
ARTIST: Carla Jay Harris
STATUS: Punch List

MARK RIDLEY-THOMAS BEHAVIORAL HEALTH CENTER – FACADE

12021 Wilmington Ave., Los Angeles CA 90059
DEPARTMENT: Mental Health
BUDGET: \$976,000
FUNDING SOURCE: Civic Art Funds
ARTIST: Cliff Garten
STATUS: Installation

MARK RIDLEY-THOMAS BEHAVIORAL HEALTH CENTER – LOBBY

12021 Wilmington Ave., Los Angeles CA 90059
DEPARTMENT: Mental Health
BUDGET: \$191,500
FUNDING SOURCES: Civic Art Funds, UUT Funds
ARTIST: FreelandBuck
STATUS: Closeout

MARK RIDLEY-THOMAS BEHAVIORAL HEALTH CENTER – SUTER PAINTING CONSERVATION

1680 E 120th St., Los Angeles, CA 90059
DEPARTMENT: Second District
BUDGET: \$10,000
FUNDING SOURCE: Civic Art Funds
ARTIST: Lyle Suter
CONSERVATOR: Aneta Zebala Paintings Conservation
STATUS: Installation

MARTIN LUTHER KING, JR. CHILD AND FAMILY WELLBEING CENTER

1741 E. 120th St., Los Angeles, CA 90059
DEPARTMENT: Mental Health
BUDGET: \$207,500
FUNDING SOURCE: Civic Art Funds
ARTISTS: Floyd Strickland and Mitchell Zenarosa
STATUS: Fabrication

PROJECTS LIST

SECOND DISTRICT

MARTIN LUTHER KING, JR. MEDICAL CENTER – MOODY PHOTO COLLAGE ACCESSION AND PLAQUE

1670-1680 E. 120th St., Los Angeles, CA 90059

DEPARTMENT: Health Services

BUDGET: \$500

FUNDING SOURCE: Civic Art Funds

ARTIST: Dominique Moody

Status: Closeout

PARK TO PLAYA TRAIL — SCENIC OVERVIEW THROUGH STOCKER CORRIDOR

Blair Hills Corridor, Culver City, CA 90232

DEPARTMENT: Parks and Recreation

BUDGET: \$127,000

FUNDING SOURCE: Civic Art Funds

ARTIST: Kim Abeles

STATUS: Installation

PARK TO PLAYA TRAIL – TEMPORARY MURAL 5950 Stoneview Dr., Culver City, CA 90232

DEPARTMENT: Parks and Recreation

BUDGET: \$7,000

FUNDING SOURCE: Civic Art Funds

ARTISTS: Students from Otis College Of Art and
Design's Creative Action Program

STATUS: Closeout

RE:PLAY PROGRAM – COL. LEON H. WASHINGTON PARK

8908 Maie Ave., Los Angeles, CA 90002

DEPARTMENT: Parks and Recreation

BUDGET: TBD

FUNDING SOURCE: TBD

ARTISTS: TBD

STATUS: Scoping

RE:PLAY PROGRAM – EAST RANCHO DOMINGUEZ PARK

15116 S Atlantic Ave., Compton, CA 90221

DEPARTMENT: Parks and Recreation

BUDGET: TBD

FUNDING SOURCE: TBD

ARTISTS: TBD

STATUS: Scoping

RE:PLAY PROGRAM – ENTERPRISE PARK

13055 Clovis Ave., Los Angeles, CA 90059

DEPARTMENT: Parks and Recreation

BUDGET: TBD

FUNDING SOURCE: TBD

ARTISTS: TBD

STATUS: Scoping

RE:PLAY PROGRAM – GEORGE WASHINGTON CARVER PARK

1400 E. 118th St. Los Angeles CA 90059

DEPARTMENT: Parks and Recreation

BUDGET: TBD

FUNDING SOURCE: TBD

ARTISTS: TBD

STATUS: Scoping

RE:PLAY PROGRAM – JESSE OWENS COMMUNITY REGIONAL PARK

9799 S Western Ave., Los Angeles, CA 90047

DEPARTMENT: Parks and Recreation

BUDGET: TBD

FUNDING SOURCE: TBD

ARTISTS: TBD

STATUS: Scoping

RE:PLAY PROGRAM – LENNOX PARK

10828 Condon Ave., Inglewood, CA 90304

DEPARTMENT: Parks and Recreation

BUDGET: TBD

FUNDING SOURCE: TBD

ARTISTS: TBD

STATUS: Scoping

RE:PLAY PROGRAM – MONA PARK

2291 E 121st St., Compton, CA 90222

DEPARTMENT: Parks and Recreation

BUDGET: TBD

FUNDING SOURCE: TBD

ARTISTS: TBD

STATUS: Scoping

TED WATKINS MEMORIAL PARK – STRAYHORN TILED ARTWORK CONSERVATION

1335 E. 103rd St., Los Angeles, CA 90002

DEPARTMENT: Parks and Recreation

BUDGET: TBD

FUNDING SOURCE: TBD

ARTIST: Robin Strayhorn

STATUS: Planning

VERMONT CORRIDOR — LOBBY

510 S. Vermont Ave., Los Angeles, CA 90020

DEPARTMENT: Mental Health

BUDGET: \$257,000

FUNDING SOURCE: Civic Art Funds

ARTIST: Suzy Taekyung Kim

STATUS: Closeout

VERMONT CORRIDOR — TERRACE

510 S. Vermont Ave., Los Angeles, CA 90020

DEPARTMENT: Mental Health

BUDGET: \$773,000

FUNDING SOURCE: Civic Art Funds

ARTIST: Amir H. Fallah

STATUS: Closeout

THIRD DISTRICT

CAHUENGA PASS – FORD ART TOWER

2580 Cahuenga Blvd. E., Los Angeles, CA 90068
DEPARTMENT: Parks and Recreation
BUDGET: \$350,000
FUNDING SOURCE: AT&T
ARTIST: TBD
STATUS: Planning

CAMP VERNON KILPATRICK REPLACEMENT CENTER

427 S. Encinal Canyon Rd., Malibu, CA 90265
DEPARTMENT: Probation
BUDGET: \$340,000
FUNDING SOURCE: Civic Art Funds
ARTIST: TBD
STATUS: Planning

EL CARISO PARK – GLASSMAN SCULPTURE CONSERVATION

13100 Hubbard St., Sylmar, CA 91342
DEPARTMENT: Parks and Recreation
BUDGET: TBD
FUNDING SOURCE: Civic Art Funds
ARTIST: Stephen Glassman
CONSERVATOR: TBD
STATUS: Planning

JOHN ANSON FORD AMPHITHEATRE SCENIC TRAIL

2580 Cahuenga Blvd., Los Angeles, CA 90068
DEPARTMENT: Parks and Recreation
BUDGET: \$30,000
FUNDING SOURCE: Civic Art Funds
ARTIST: TBD
STATUS: On Hold

TOPANGA LIBRARY – RICE SCULPTURE CONSERVATION

122 Topanga Canyon Dr., Topanga, CA 90290
DEPARTMENT: Library
BUDGET: \$3,100
FUNDING SOURCE: Civic Art Funds
ARTIST: Megan Rice
CONSERVATOR: Silverlake Conservation
STATUS: Fabrication

VA HOSPITAL – METRO DONATION

11301 Wilshire Blvd., Los Angeles, CA 90073
DEPARTMENT: Public Works
BUDGET: TBD
FUNDING SOURCE: Metro Art
ARTIST: Peter Stewart
STATUS: Planning

ZEV YAROSLAVSKY FAMILY SUPPORT CENTER – EAST LOBBY

7515 Van Nuys Blvd., Van Nuys, CA 91405
DEPARTMENT: Public Works
BUDGET: \$129,000
FUNDING SOURCE: Civic Art Funds
ARTIST: Chris Natrop
STATUS: Closeout

FOURTH DISTRICT

ADVENTURE PARK MULTI-BENEFIT STORMWATER CAPTURE

10130 Gunn Ave., Whittier, CA 90605
DEPARTMENT: Parks and Recreation
BUDGET: TBD
FUNDING SOURCE: TBD
ARTIST: TBD
STATUS: SCOPING

LOS PADRINOS JUVENILE HALL SECURITY ENHANCEMENT PHASE 1

7285 Quill Dr., Downey, CA 90242
DEPARTMENT: Probation
BUDGET: \$22,000
FUNDING SOURCE: Civic Art Funds
ARTIST: TBD
STATUS: Planning

BURTON W. CHACE PARK

13650 Mindanao Way, Marina del Rey, CA 90292
DEPARTMENT: Beaches and Harbors
BUDGET: TBD
FUNDING SOURCE: TBD
ARTIST: TBD
STATUS: Planning

LOS NIETOS COMMUNITY AND SENIOR CENTER – ART PURCHASE

11640 Slauson Ave., Whittier, CA 90606
DEPARTMENT: Workforce Development, Aging and Community Services (WDACS)
BUDGET: \$16,500
FUNDING SOURCE: Civic Art Funds
ARTIST: Wayne Healy, Pola Lopez, Andrea Ramirez, Laura Vazquez Rodriguez
STATUS: Installation

LOS NIETOS COMMUNITY AND SENIOR CENTER – BEALL TILED ARTWORK CONSERVATION

11640 Slauson Ave., Whittier, CA 90606
DEPARTMENT: Workforce Development, Aging and Community Services (WDACS)
BUDGET: \$17,900
FUNDING SOURCE: Civic Art Funds
ARTIST: Barbara Beall
CONSERVATOR: Fine Arts Conservation
STATUS: Closeout

FOURTH DISTRICT

NORWALK LIBRARY

12350 Imperial Hwy., Norwalk, CA 90650
DEPARTMENT: Library
BUDGET: TBD
FUNDING SOURCE: Civic Art Funds
ARTIST: TBD
STATUS: Planning

NORWALK LIBRARY – BENTON SCULPTURE DONATION

12350 Imperial Hwy., Norwalk, CA 90650
DEPARTMENT: Library
BUDGET: \$27,900
FUNDING SOURCES: Civic Art Funds, Donation
ARTIST: Fletcher Benton
DONOR: Kevin Burke
STATUS: Closeout

PETER F. SCHABARUM REGIONAL PARK

17250 Colima Rd., Rowland Heights, CA 91748
DEPARTMENT: Parks and Recreation
BUDGET: \$23,000
FUNDING SOURCE: Civic Art Funds
ARTIST: TBD
STATUS: Scoping

RANCHO LOS AMIGOS — OUTPATIENT BUILDING

7601 E. Imperial Hwy., Downey, CA 90242
DEPARTMENT: Health Services
BUDGET: \$73,000
FUNDING SOURCE: Civic Art Funds
ARTIST: Hataya Tubtim
STATUS: Closeout

RANCHO LOS AMIGOS RESTORATIVE CARE VILLAGE RANCHO LOS AMIGOS – RECUPERATIVE CARE CENTER AND RESIDENTIAL TREATMENT PROGRAM

7601 E. Imperial Hwy., Downey, CA 90242
DEPARTMENT: Health Services, Mental Health
BUDGET: \$554,000
FUNDING SOURCE: Civic Art Funds
ARTIST: Matthew Mazzotta
STATUS: Final Design

RANCHO LOS AMIGOS – SOUTH CAMPUS COUNTY OFFICE BUILDING

7601 E. Imperial Hwy., Downey, CA 90242
DEPARTMENT: Internal Services, Probation
BUDGET: \$1,000,000
FUNDING SOURCE: Civic Art Funds
STATUS: Scoping

SAN PEDRO COURTHOUSE

505 S. Centre St., San Pedro, CA 90731
DEPARTMENT: Chief Executive Office
BUDGET: \$1,000,000
FUNDING SOURCE: Civic Art Funds
ARTIST: TBD
STATUS: Scoping

WHITTIER AQUATIC CENTER

8028 Pioneer Blvd., Whittier, CA 90606
DEPARTMENT: Parks and Recreation
BUDGET: \$284,000
FUNDING SOURCE: Civic Art Funds
ARTIST: Rebeca Méndez
STATUS: Final Design

FIFTH DISTRICT

ALTADENA GOLF COURSE

1456 East Mendocina St., Altadena, CA 91001
DEPARTMENT: Parks and Recreation
BUDGET: \$26,000
FUNDING SOURCE: Civic Art Funds
ARTIST: TBD
STATUS: Scoping

BARRY J. NIDORF JUVENILE HALL SECURITY ENHANCEMENT PHASE I

16350 Filbert St., Sylmar, CA 91342
DEPARTMENT: Probation
BUDGET: \$34,000
FUNDING SOURCE: Civic Art Funds
ARTIST: TBD
STATUS: Planning

BROWNS CANYON EQUESTRIAN PARK

12080 Browns Canyon Rd., Chatsworth CA 91311
DEPARTMENT: Parks and Recreation
BUDGET: TBD
FUNDING SOURCE: Civic Art Funds
ARTIST: TBD
STATUS: Scoping

CAMP CHALLENGER CCTV PHASE II

5300 W. Ave. I, Lancaster, CA 93536
DEPARTMENT: Probation
BUDGET: \$21,000
FUNDING SOURCE: Civic Art Funds
ARTIST: TBD
STATUS: Planning

CAMP ROCKEY MODULAR LIVING UNIT PHASE II

1900 Sycamore Canyon Rd., San Dimas, CA 91773
DEPARTMENT: Probation
BUDGET: \$13,000
FUNDING SOURCE: Civic Art Funds
ARTIST: TBD
STATUS: Planning

FIFTH DISTRICT

CASTAIC LAKE RECREATION AREA

32132 Castaic Lake Dr., Santa Clarita, CA 91384
DEPARTMENT: Parks and Recreation
BUDGET: \$18,000
FUNDING SOURCE: Civic Art Funds
ARTIST: Aaron Morse
STATUS: Closeout

CASTAIC REGIONAL SPORTS COMPLEX

31320 North Castaic Rd., Castaic, CA 91384
DEPARTMENT: Parks and Recreation
BUDGET: \$14,000
FUNDING SOURCE: Civic Art Funds
ARTIST: Michael Parker and Todd Ciborowski
STATUS: Closeout

CRESCENTA VALLEY COMMUNITY REGIONAL PARK

3901 Dunsmore Ave., La Crescenta, CA 91214
DEPARTMENT: Parks and Recreation
BUDGET: \$19,000
FUNDING SOURCE: Civic Art Funds
ARTIST: Aaron Morse
STATUS: Closeout

DEL VALLE PARK – PICNIC AREA AND SHADE STRUCTURE

28201 Sloan Canyon Rd., Castaic, CA 91384
DEPARTMENT: Parks and Recreation
BUDGET: TBD
FUNDING SOURCE: TBD
ARTIST: TBD
STATUS: Scoping

DEVIL'S PUNCHBOWL NATURAL AREA AND NATURE CENTER

Punchbowl Rd., Pearblossom, CA 93553
DEPARTMENT: Parks and Recreation
BUDGET: \$19,000
FUNDING SOURCE: Civic Art Funds
ARTIST: Aaron Morse
STATUS: Closeout

FIRE STATION 104

26901 Golden Valley Rd., Santa Clarita, CA 91351
DEPARTMENT: Fire
BUDGET: \$115,500
FUNDING SOURCE: Civic Art Funds
ARTIST: Anne-Elizabeth Sobieski
STATUS: Closeout

FIRE STATION 143 – KOBAYASHI SCULPTURE RELOCATION

28580 Hasley Canyon Rd., Castaic, CA 91384
DEPARTMENT: Fire
BUDGET: TBD
FUNDING SOURCE: TBD
ARTIST: Kipp Kobayashi
STATUS: Scoping

FRANK G. BONELLI REGIONAL PARK

120 E. Via Verde, San Dimas, CA 91773
DEPARTMENT: Parks and Recreation
BUDGET: \$19,000
FUNDING SOURCE: Civic Art Funds
ARTIST: Aaron Morse
STATUS: Closeout

GEORGE LANE SKATE PARK

5520 W. Ave. L8, Quartz Hill, CA 93536
DEPARTMENT: Parks and Recreation
BUDGET: \$14,000
FUNDING SOURCE: Civic Art Funds
ARTISTS: Michael Parker and Todd Ciborowski
STATUS: Closeout

HIGH DESERT RESTORATIVE CARE VILLAGE HIGH DESERT MENTAL HEALTH URGENT CARE CENTER –ART PURCHASE

335 E. Ave. I, Lancaster CA 93535
DEPARTMENT: Mental Health
BUDGET: \$15,800
FUNDING SOURCE: Civic Art Funds
ARTIST: Michael Waugh
STATUS: Closeout

HIGH DESERT MENTAL HEALTH URGENT CARE CENTER – LOBBY

335 E. Ave. I, Lancaster CA 93535
DEPARTMENT: Mental Health
BUDGET: \$123,000
FUNDING SOURCE: Civic Art Funds
ARTIST: Cheryl Molnar
STATUS: Closeout

JACKIE ROBINSON PARK

8773 E Ave. R, Sun Village, CA 93543
DEPARTMENT: Parks and Recreation
BUDGET: TBD
FUNDING SOURCE: TBD
ARTIST: TBD
STATUS: Scoping

LITTLEROCK PARK

96th Street E and E Avenue T, Littlerock, CA 93543
DEPARTMENT: Parks and Recreation
BUDGET: TBD
FUNDING SOURCE: TBD
ARTIST: TBD
STATUS: Scoping

LIVE OAK LIBRARY

22 W. Live Oak Blvd., Arcadia, CA 91007
DEPARTMENT: Library
BUDGET: \$43,000
FUNDING SOURCE: Civic Art Funds
ARTIST: TBD
STATUS: Scoping

PROJECTS LIST

FIFTH DISTRICT

MARSHALL CANYON GOLF COURSE CLUBHOUSE

6100 Stephens Ranch Rd., La Verne, CA 91750
DEPARTMENT: Parks and Recreation
BUDGET: \$19,000
FUNDING SOURCE: Civic Art Funds
ARTIST: Dog and Pony
STATUS: Fabrication

OLIVE VIEW-UCLA RESTORATIVE CARE VILLAGE

OLIVE VIEW-UCLA – ART PURCHASE

14445 Olive View Dr., Los Angeles, CA 91342
DEPARTMENTS: Health Services, Mental Health
BUDGET: \$42,000
FUNDING SOURCE: Civic Art Funds
ARTIST: TBD
STATUS: Planning

OLIVE VIEW-UCLA – MENTAL HEALTH URGENT CARE CENTER

14445 Olive View Dr., Los Angeles, CA 91342
DEPARTMENT: Mental Health
BUDGET: \$149,800
FUNDING SOURCE: Civic Art Funds
ARTIST: Ball-Nogues
STATUS: Fabrication

OLIVE VIEW-UCLA – MENTAL HEALTH WELLNESS CENTER

14445 Olive View Dr., Los Angeles, CA 91342
DEPARTMENT: Mental Health
BUDGET: \$66,900
FUNDING SOURCE: Civic Art Funds
ARTIST: Michael Waugh
STATUS: Fabrication

OLIVE VIEW-UCLA – RECUPERATIVE CARE CENTER

14445 Olive View Dr., Los Angeles, CA 91342
DEPARTMENT: Health Services
BUDGET: \$226,900
FUNDING SOURCE: Civic Art Funds
ARTIST: Debra Scacco
STATUS: Fabrication

OLIVE VIEW-UCLA – RESIDENTIAL TREATMENT PROGRAM A

14445 Olive View Dr., Los Angeles, CA 91342
DEPARTMENT: Mental Health
BUDGET: \$172,600
FUNDING SOURCE: Civic Art Funds
ARTIST: Renée A. Fox
STATUS: Fabrication

OLIVE VIEW-UCLA – RESIDENTIAL TREATMENT PROGRAM D

14445 Olive View Dr., Los Angeles, CA 91342
DEPARTMENT: Mental Health
BUDGET: \$172,600
FUNDING SOURCE: Civic Art Funds
ARTIST: Olalekan Jeyifous
STATUS: Fabrication

PUBLIC WORKS HEADQUARTERS – COURTYARD

900 S. Fremont Ave., Alhambra, CA 91803
DEPARTMENT: Public Works
BUDGET: \$127,300
FUNDING SOURCES: Civic Art Funds, Public Works
ARTIST: Geoff McFetridge
STATUS: Closeout

PUBLIC WORKS HEADQUARTERS – CS-AIR

900 S. Fremont Ave., Alhambra, CA 91803
DEPARTMENT: Public Works
BUDGET: \$75,000
FUNDING SOURCES: Civic Art Funds, Public Works
ARTIST: TBD
STATUS: Planning

RE:PLAY PROGRAM – CHARLES WHITE PARK

77 Mountain View St., Altadena, CA 91001
DEPARTMENT: Parks and Recreation
BUDGET: TBD
FUNDING SOURCES: TBD
ARTIST: TBD
STATUS: Scoping

TEMPLE CITY LIBRARY

9050 E Las Tunas Dr., Temple City, CA 91780
DEPARTMENT: Library
BUDGET: \$50,000
FUNDING SOURCE: Civic Art Funds
ARTIST: TBD
STATUS: Scoping

COUNTYWIDE

19TH AMENDMENT CENTENNIAL ARTWORK COMPETITION

LOCATION: Countywide
DEPARTMENT: N/A
BUDGET: \$60,000
FUNDING SOURCE: Chief Executive Office
ARTISTS: Andrea Monroe, Amy Smith, Clarence J. Williams III, Laura Vazquez Rodriguez, Moses X Ball, Ragni Agarwal
STATUS: Installation/Distribution

COUNTYWIDE

COUNTYWIDE CIVIC ART BASELINE INVENTORY

LOCATION: Countywide
DEPARTMENT: N/A
BUDGET: \$240,000
FUNDING SOURCE: LA County General Fund
ARTIST: N/A
STATUS: On Hold

COURTHOUSE ARTWORK STATE OWNERSHIP PROJECT

LOCATION: Countywide
DEPARTMENT: Arts and Culture
BUDGET: N/A
FUNDING SOURCE: N/A
ARTIST: N/A
STATUS: Active

INTERDEPARTMENTAL HEALTHY DESIGN WORKGROUP

LOCATION: Countywide
DEPARTMENT: Public Health
BUDGET: N/A
FUNDING SOURCE: N/A
ARTIST: N/A
STATUS: Active

LIBRARY CS-AIR

LOCATION: Countywide
DEPARTMENT: Library
PROJECT COST: \$14,000
FUNDING SOURCE: Civic Art Funds
ARTIST: Alan Nakagawa
STATUS: Completed

LOS ANGELES COUNTY CIVIC ART COLLECTION STUDY

LOCATION: Countywide
DEPARTMENT: Arts and Culture
BUDGET: \$30,000
FUNDING SOURCE: Civic Art Funds
ARTIST: N/A
STATUS: Planning

LOS ANGELES RIVER MASTER PLAN

LOCATION: Countywide
DEPARTMENT: Public Works
BUDGET: TBD
FUNDING SOURCE: TBD
ARTIST: N/A
STATUS: Active

MURAL ORDINANCE

LOCATION: Countywide
DEPARTMENT: Arts and Culture
BUDGET: TBD
FUNDING SOURCE: TBD
ARTIST: N/A
STATUS: Scoping

OURCOUNTY SUSTAINABILITY PLAN

LOCATION: Countywide
DEPARTMENT: Chief Office of Sustainability
BUDGET: TBD
FUNDING SOURCE: TBD
ARTIST: N/A
STATUS: Active

PUBLIC ART IN PRIVATE DEVELOPMENT (PAPD) PROGRAM

LOCATION: Countywide
DEPARTMENT: Arts and Culture
BUDGET: TBD
FUNDING SOURCES: TBD
ARTIST: TBD
STATUS: Planning

PUBLIC ARTISTS IN DEVELOPMENT (PAiD) PROGRAM

LOCATION: Countywide
DEPARTMENT: Arts and Culture
BUDGET: \$1,750,000
FUNDING SOURCES: Andrew W. Mellon Foundation
ARTIST: TBD
STATUS: Planning

PUBLIC HEALTH/PLACE/VISION ZERO INITIATIVE — CS-AIR

695 S. Vermont, 14th Floor, South Tower,
Los Angeles, CA 90005
DEPARTMENTS: Public Health, Public Works
BUDGET: \$84,000
FUNDING SOURCE: Civic Art Funds
ARTIST: Clement Hanami
STATUS: Fabrication

ROADMAP TO A SUSTAINABLE WASTE MANAGEMENT FUTURE

LOCATION: Countywide
DEPARTMENT: Public Works
BUDGET: N/A
FUNDING SOURCE: N/A
ARTIST: N/A
STATUS: Active

PROJECTS LIST