

# LA PUENTE ONE STOP DEVELOPMENT CENTER

Artist Workshop

December 22, 2020



Los Angeles  
County  
**Arts &  
Culture**

ARTS EDUCATION

GRANTS AND  
PROFESSIONAL  
DEVELOPMENT

**CIVIC ART**

RESEARCH AND  
EVALUATION

CULTURAL EQUITY AND INCLUSION INITIATIVE (CEII)

**LA PUENTE ONE STOP DEVELOPMENT CENTER**



# LA PUENTE

## La Puente, CA

Place in: [Los Angeles County, CA](#), [Los Angeles-Long Beach-Anaheim, CA Metro Area](#), [California](#), [United States](#)

**40,020**

Population

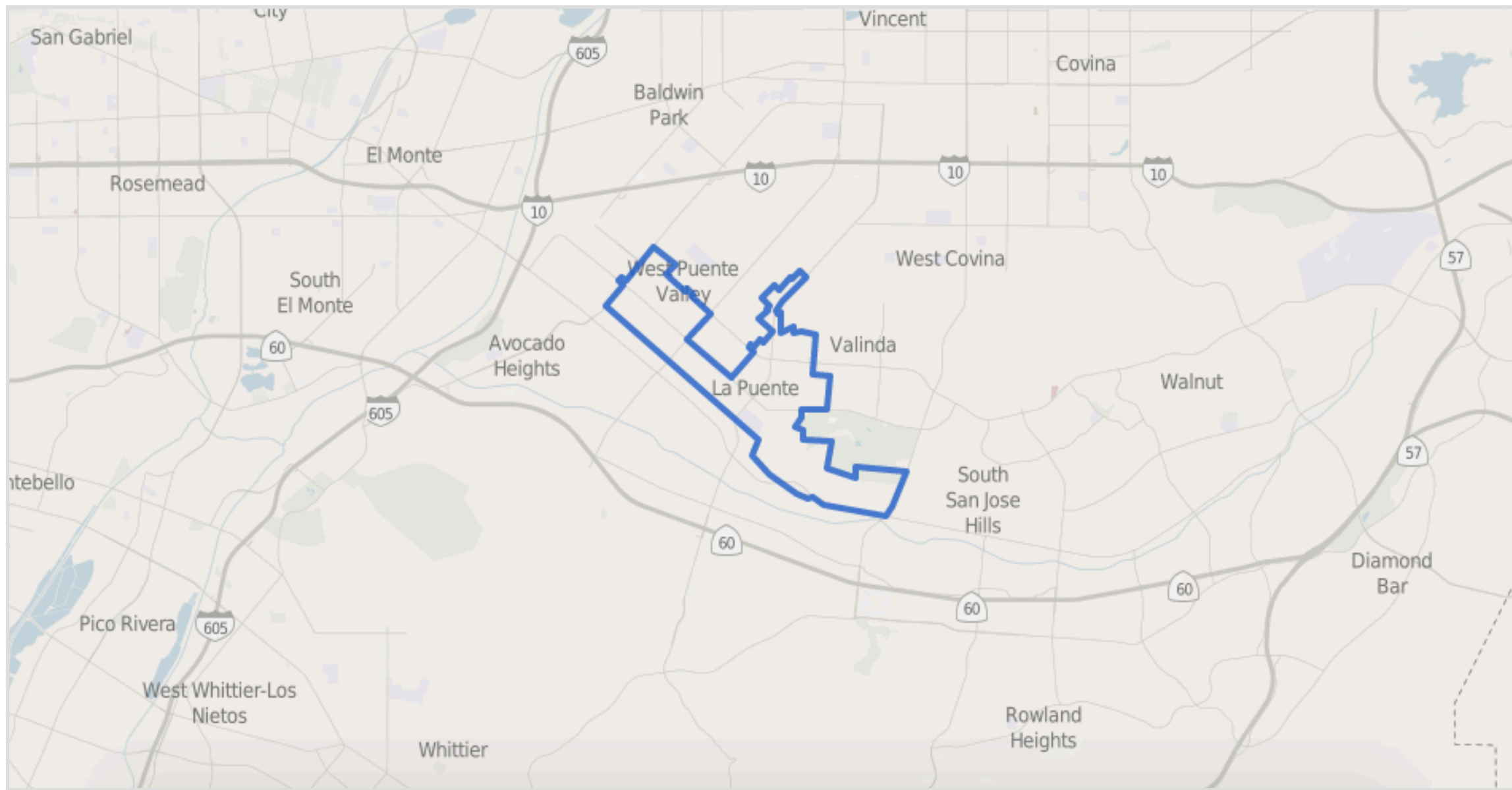
**3.5** square miles

**11,504** people per square mile

Census data: ACS 2019 5-year unless noted

**LA PUENTE ONE STOP DEVELOPMENT CENTER**





## LA PUENTE ONE STOP DEVELOPMENT CENTER



The City of La Puente, incorporated in August 1, 1956, is approximately 3.5 square miles and is home to approximately 40,020 people. It is primarily a residential community with multiple types of businesses. The City's rural community is preserved by a well defined general plan.

La Puente One stop Development Center is located in front of the City Hall of La Puente and is not too far from Workman Elementary School and La Puente High School.

# POPULATION



**LA PUENTE ONE STOP  
DEVELOPMENT CENTER  
CALL FOR ARTIST-RFP**



## ELIGIBILITY

1. This artwork opportunity is open to local artists residing or working within the Greater Los Angeles Area: Los Angeles County, Orange County, Ventura County, San Bernardino County, and Riverside County.
2. Artists will not be eligible to apply if they have been commissioned a civic art project with the Department of Arts and Culture in the last five years, whose budget was higher than \$150,000.

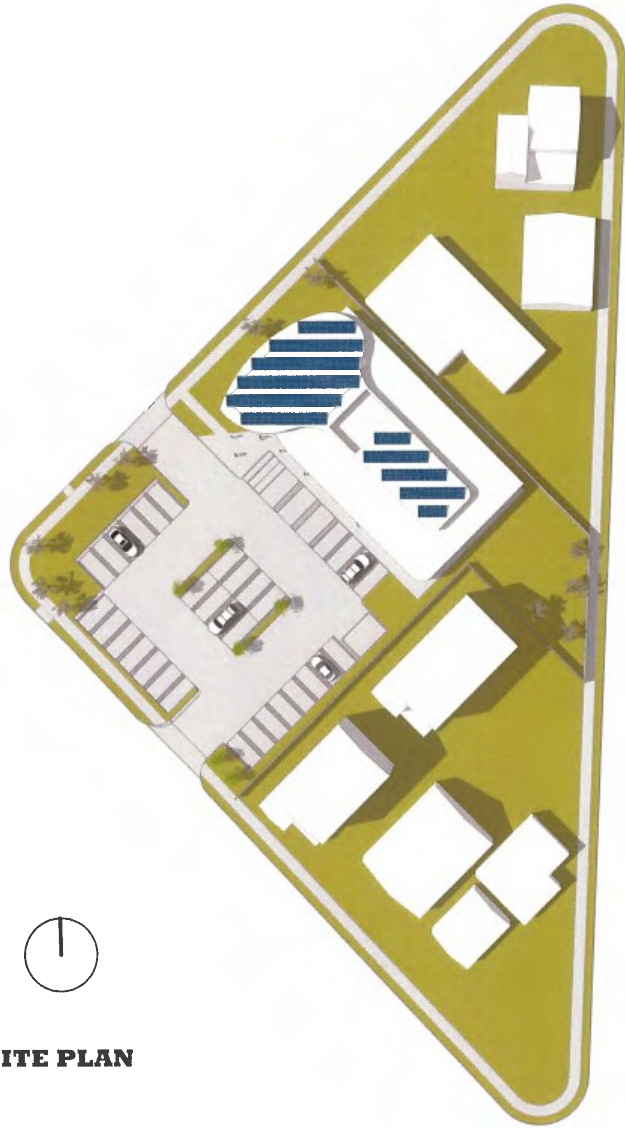


**LA PUENTE ONE STOP DEVELOPMENT CENTER**



**LA PUENTE ONE STOP DEVELOPMENT CENTER**





**SITE PLAN**



**AERIAL VIEW**





La Puente Development Center

## PROJECT GOALS

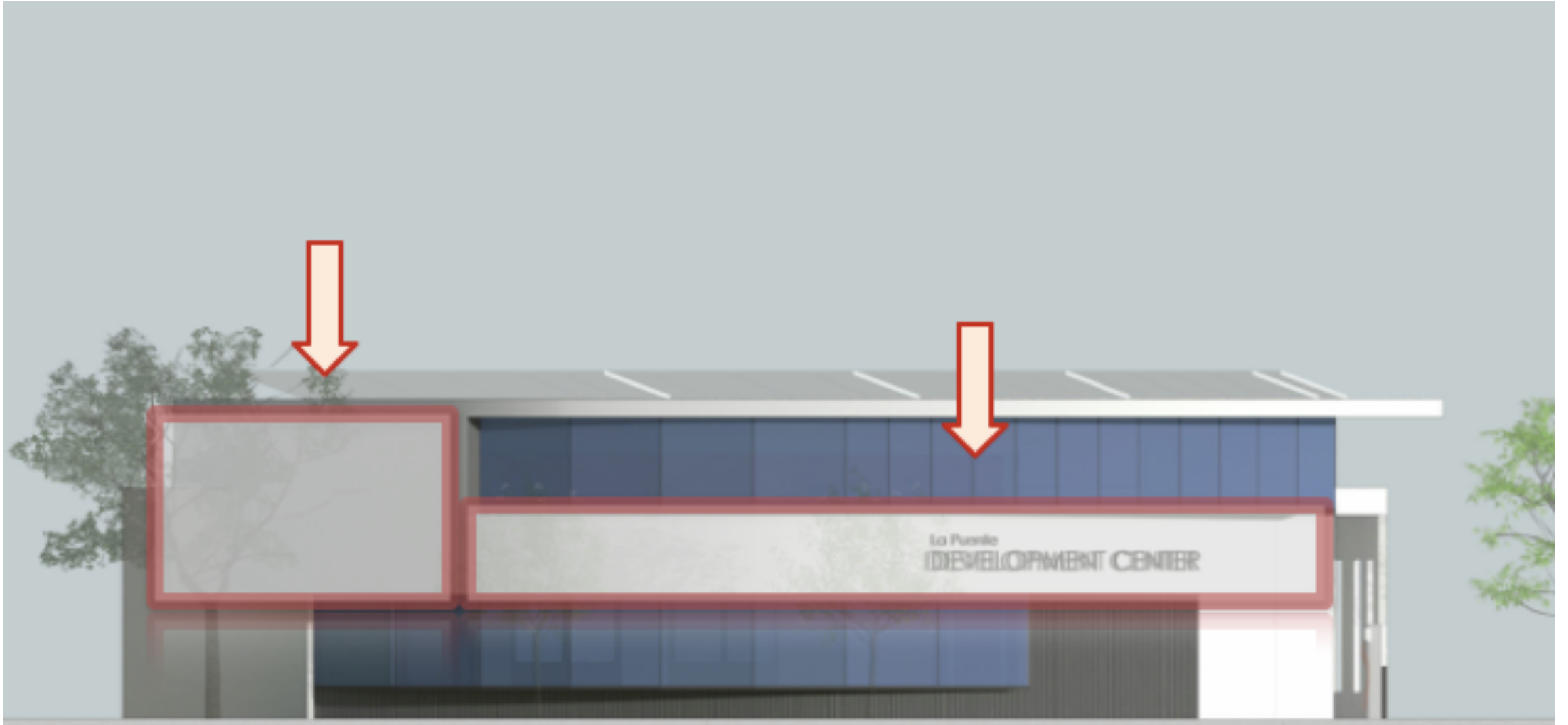
The selected artist or artist team will create an original and site-specific artwork for the La Puente One Stop Development Center that will embrace the history of stewardship of the land, the diversity of past and present communities, and the essential values of environmental sustainability.

A focus on community engagement is an essential element throughout the course of this project.

## **ART OPPORTUNITY**

**Upper left wall and adjacent band**





**LA PUENTE ONE STOP DEVELOPMENT CENTER**



# SELECTION COMMITTEE (PCC)

- AN ARTS DEPUTY FROM THE FIRST SUPERVISORIAL DISTRICT
- ARTS COMMISSIONER
- REPRESENTATIVES FROM THE DESIGN TEAM
- COMMUNITY REPRESENTATIVE(S)
- REPRESENTATIVES FROM THE DEPARTMENT OF PUBLIC WORKS AND PARKS AND RECREATION
- TWO ARTS PROFESSIONAL (S)
- THE CIVIC ART PROGRAM STAFF SERVES AS A NON-VOTING ADVISOR TO THE PCC

# EVALUATION CRITERIA

Applications will be scored using the following criteria (up to 500 points):

- Past works reflect conceptual skills, authenticity, originality, artistic practice, and evoke response (up to 200 points).
- Artist experience is demonstrated by technical skills, basic professional quality of craftsmanship, understanding of material(s) and or media, professional approaches to processes and presentation as expressed by resume and portfolio (up to 200 points).
- Artist interest related to the artwork themes and goals outlined for this specific civic art project (up to 100 points).

# APPLICATION PROCESS

Artists or Artist Teams can apply online using the following link:

[https://apply-lacdac.smaply.io/prog/la\\_puente\\_one\\_stop\\_development\\_center/](https://apply-lacdac.smaply.io/prog/la_puente_one_stop_development_center/)

## INSTRUCTIONS for First Time Applicants:

- 1) **Please create an account** using the "REGISTER" green button;
- 2) Make sure to **fill out your eligibility profile** as an “**individual**” and as an “**individual artist**”, even if you are applying as Artist Team;
- 3) **Fill-out your account information** (if you are applying as Artist Team please select one member as the main contact for the team);
- 4) If you **Verify your email** please make sure to use the “LOG IN” button to re-access the application platform.

# APPLICATION MATERIALS

DESCRIPTION OF  
INTEREST

RESUME - in PDF  
(3 PG MAX) or MULTIPLE  
ATTACHED if apply as  
ARTIST TEAM

10 IMAGES WITH  
DETAILS INFO

**READ** (read the RFP thoroughly)

**RESEARCH** (do your research)

**BE CONCISE**

**CHECK** (references/ proofread)



## **DESCRIPTION OF INTEREST in the project through the response to the following:**

- Briefly describe why this project interests you;
- Briefly describe your artistic or community practice, your sources of inspiration, and your method of developing high quality, innovative and meaningful artwork;
- How will you be able to engage and welcome different audiences, such as the La Puente One Stop Development Center users, visitors, staff and surrounding communities?
- What is your experience managing budgets of similar scale or working within time constraints?

# 10 IMAGES OF EXISTING ARTWORKS

## 1 PHOTO per file and of one individual artwork

- Put in context / People / Site
- Details are allowed

## HIGH RESOLUTION

- 72 DPI minimum

## NO LARGER THAN

- 1920 pixels (px) X 1920 pixels (px)
- No larger than 30 MB

## NAMING CONVENTION

“FirstInitialLastName-Image1”  
(example: JJones-Image1).

If you are applying as a team, use  
the team’s name (example:  
JCollective-Image1).

Image 1

**Title, date, medium,  
dimensions and location  
of the artwork;**

**Brief description of the  
artwork (max 100 words);**

**Budget;**

**Commissioning agency or  
client, and project  
manager, if applicable.**



# WHAT MAKES A GOOD PHOTO FOR US?





# YES AND NO



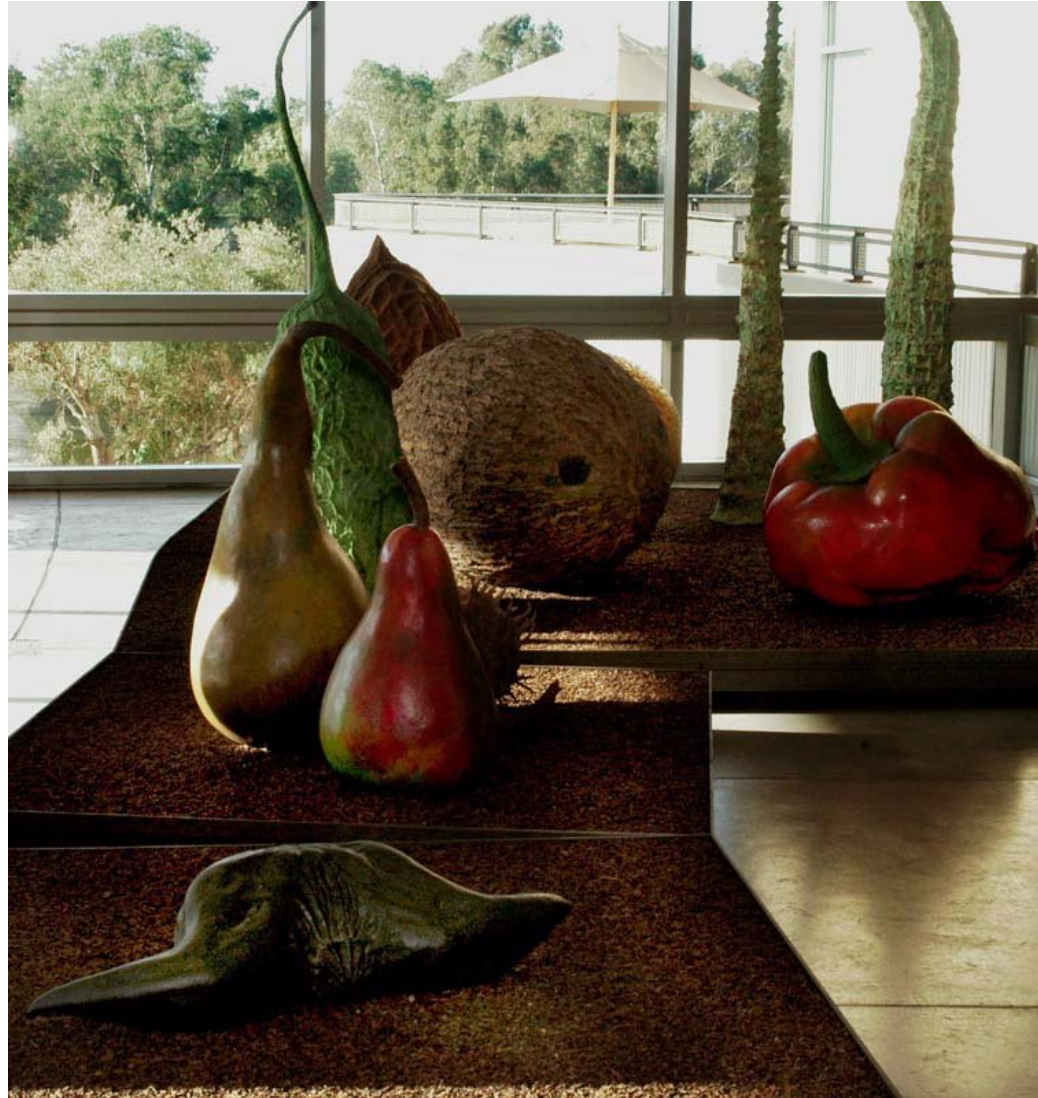
**Botanical Sky (2018)**  
65" x 45"  
spray paint on acetate on glass



detail

University of Maryland Art Gallery Office  
College Park, Maryland

NO





# NO



## **"FIRE HOSE FRIEZE" - 2005**

**FIRE STATION #31, CITY OF SAN DIEGO**

**1'- 4" X 180' PERIMETER WALL FRIEZE**

**DESIGN TEAM - PLATT/WHITELOW, ARCHITECTS**

**Awards: 2005 Award of Merit, American Society of Civil Engineers, San Diego Section.**

**2006 Honor Award, American Public Works Association, San Diego and Imperial Counties Chapter**



# YES





# YES



# TENTATIVE SCHEDULE

**January 15, 2021**

**Deadline for Submissions 5:00 PST**

**early February, 2021**

**PCC Meeting 1:** 3 Artist(s) Selected to Develop Proposal

**Mid-March, 2021**

**PCC Meeting 2:** Artist(s) and Artwork Proposal Selected

**April-May, 2021**

Civic Art Engagement

**May-September, 2021**

Artwork Design

**Fall, 2022**

Fabrication Start

**Summer, 2022**

**Artwork Installation Completed**

QUESTIONS?

THE  
DONUT HOLE  
"IT'S THE QUALITY"



# Thank you!

*Civic Art Project Manager*

**Ottavia Alloisio Crucitti**

[ocrucitti@arts.lacounty.gov](mailto:ocrucitti@arts.lacounty.gov)

(929) 227-5082 or (213) 361-2980