

2016 Arts Internship Application Workshop

Program Goals

To provide undergraduate students with meaningful on-the-job training and experience in working in nonprofit arts organizations, while assisting arts organizations to develop future arts leaders.



Impact

Since 2000, more than 1800 students have participated.



Eligible Organizations



Photo by Flickr user Kristlan Niemi. Creative Commons license.

- 501©3 status for at least two years
 - Performing/presenting org or local arts agency
 - Not part of a college of university

Eligible Organizations



- Based in Los Angeles County
 - Primary offices and mission

Photo by Flickr user zeeveez. Creative Commons license.

Eligible Organizations



Photo by Flickr user Sarah Reed. Creative Commons license.

- Function
 - Minimum of 4 public programs/performances per year
 - Board meets regularly; 51% reside in CA
- Comply with laws and fair labor standards

Ineligible Organizations



- Part of a college or university
- A museum or visual arts organization

Photo by Flickr user Fe Ilya. Creative Commons license.

What Do You Get?



- \$3,200-\$4,700 to hire an undergraduate for 10 weeks, full time, during the summer
- Grants and cash match requirements depend on budget size

Photo by Flickr user Images_of_Money,
Creative Commons license

Grant and Match Amounts

Organizational Budget Size	Allowable Number of Internships	Grant Award per Internship	Required Cash Match	Maximum Award Amount
Under \$500,000	1	\$4,700	No match required; \$500 stipend added	\$4,700
\$500,000 - \$1,500,000	2	\$4,200	No match required	\$8,400
\$1,500,000 - \$4,000,000	2	\$3,700	\$500 match required per internship	\$7,400
Over \$4,000,000	2	\$3,200	\$1,000 match required per internship	\$6,400

Payments to Students

Grants range from \$3,200-\$4,700/internship

All interns are paid \$4,200.

(\$10.50/hr, \$420/week)

Anticipate and plan for administrative costs like
employer **taxes**,
parking reimbursements,
and **mileage**.

Organizations receiving \$4,700 are expected to put at least \$500 toward these costs.

Organizational Requirements

- **Capacity** to recruit, hire, and supervise an intern for 10 weeks
- A substantive, engaging **internship project**
- **Interest in mentoring** a newcomer to the field



Organizational Requirements

- **Compliance** with and **timely submission** of all required forms and final reports
- **Supervisor Orientation attendance:** April 11, 2016 (Getty Center)



Timeline

January:
panel review

Contracting

May 20: Intern
selections due

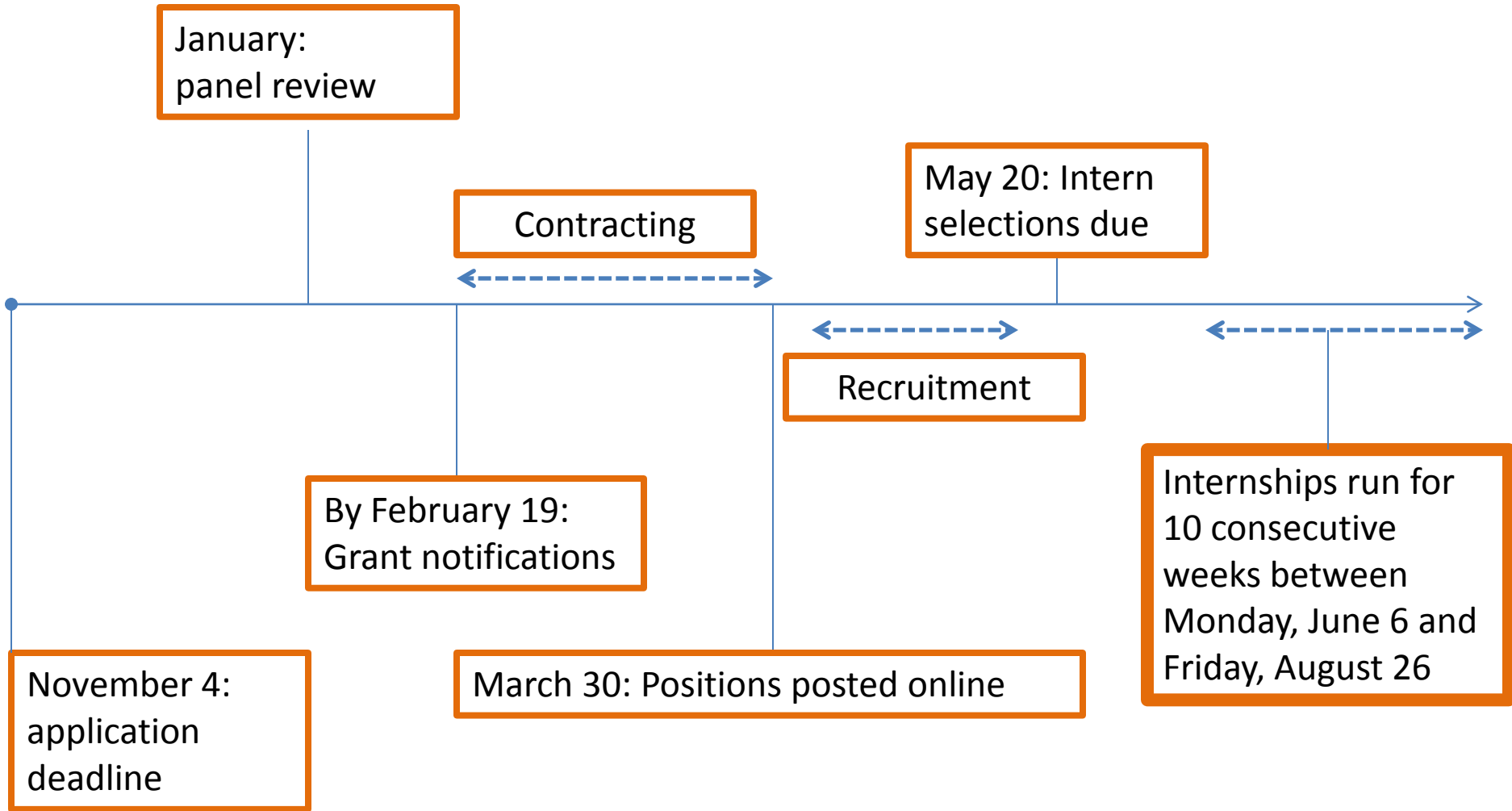
Recruitment

By February 19:
Grant notifications

November 4:
application
deadline

March 30: Positions posted online

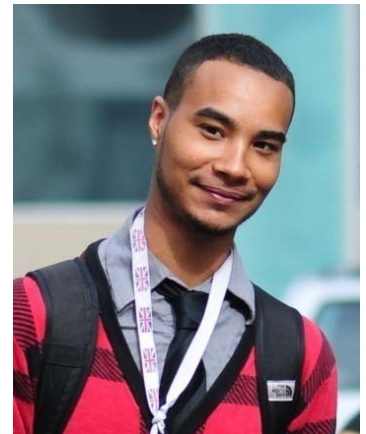
Internships run for
10 consecutive
weeks between
Monday, June 6 and
Friday, August 26



Intern Eligibility Requirements

Candidates **must**...

- Be currently enrolled undergraduates
- Reside and/or attend school in Los Angeles County
- Have completed at least one semester of college by June 1, 2016 *or* will complete their undergraduate degree between May 1 - September 1, 2016



Intern Eligibility Requirements

Candidates may **not**...

- Have a prior BA, BS, or higher degree
- Have previously participated in the LA County Arts Internship program
- Be a previous staff member or the relative of a staff or board member



Things to keep in mind

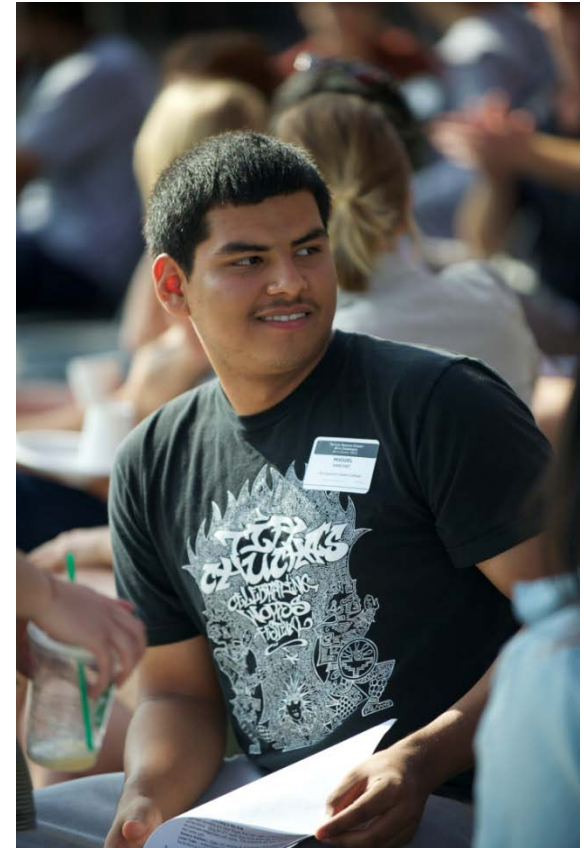
- Interns are not required to have prior experience or demonstrated interest in the arts
- Interns must work 10 consecutive weeks... no extended vacations
- Interns should have reliable transportation!



Time Commitment

Internships...

- Are 40 hours/week
Business or program hours are OK, *but*
> 8 hours a day = overtime!
- Include breaks (even if you don't take them)
- Include **three mandatory events**
- 4th of July: Follow organizational policy



Work Site Requirements

- Intern **MUST** have designated clean, functioning work area and professional equipment.
- **NO** “home work” assignments.
- Home office locations require site visit and County approval.



Elements of a Successful Internship

What have your experiences been?



Elements of a Successful Internship

- Clear learning objectives
- Meaningful on-the-job training and work experience
- Excellent communication between intern and supervisor
- Concrete project
- Adequate workspace dedicated to intern
- Sufficiently challenging responsibilities
- Integration into organization



Projects

Good projects can have program-based activities in

- Research
- Education
- Marketing
- Communication
- Social Media
- Grant writing and fundraising
- Producing/presenting performances



Administration is OK... but hours of filing are not.

Remember...

Internships should be based in meaningful work.



More this ←

Less this

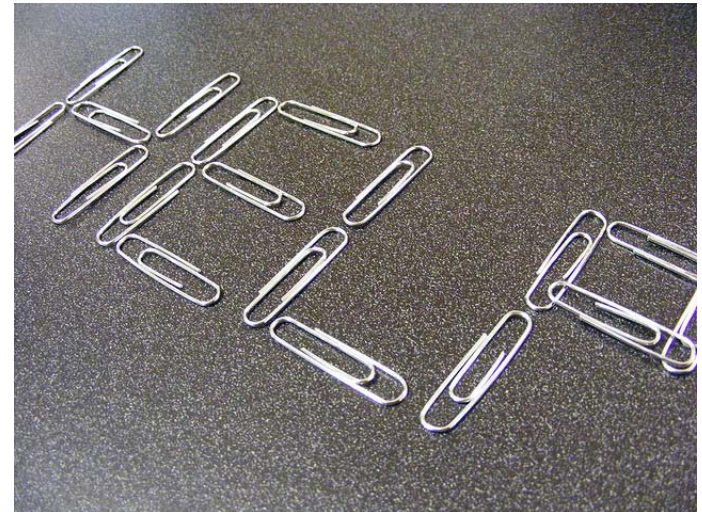


Photo by Flickr user banspy, Creative Commons license

Projects

We strongly recommend checking out last year's positions.

<http://lacountyarts.org/2015Internships.html>



Review Process

How well does your proposed project meet the goals of this program?



Review Process

Successful applications must demonstrate that each:

- Internship job description demonstrates meaningful on-the-job training, with a **specific ten-week project**; and
- Applicant demonstrates the capacity for successful mentoring of, and supervisory responsibilities for, an intern.



In addition, the panel will review any issues regarding student supervision and payment to students during past years.

How to Construct a Successful Application

Key questions:

10-week Project: Briefly describe the intern's primary duties and responsibilities.

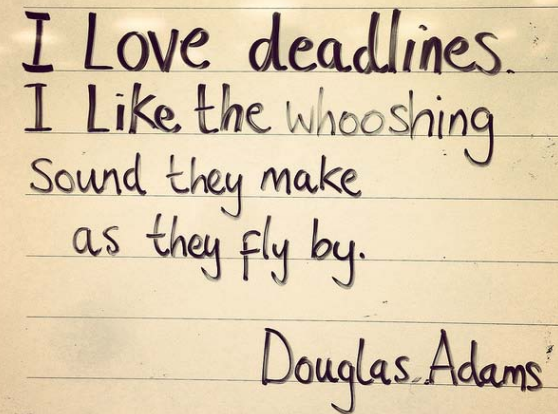
Describe the additional day-to-day activities of the intern beyond the 10-week project.

List up to five learning objectives.

Describe the supervisor's qualifications to supervise and mentor the intern.

Deadlines

- **Deadline:** Wednesday, November 4
- **Notification:** Friday, February 19
- **Positions posted online:** Wednesday, March 30
- **Intern selections due** Friday, May 20



I Love deadlines.
I Like the whooshing
Sound they make
as they fly by.

Douglas Adams

Navigating Our Online Application

<http://lacounty.culturegrants.org>

Enriching Lives



[Home](#) [Help](#) [Sign Up Instructions](#) [FAQs](#) [Sign Up](#) [Log In](#)

Welcome to the LA County Arts Commission's online grants system!

GETTING STARTED

[Sign up](#) to register a new user account and profile.

[Log in](#) if you or your organization has already created a user account.

OGP Applicants: When signing up, be sure to select **YES** to the following prompt, "Would you like to associate this user account with an organization?"

Navigating Our Online Application

Registration Content

First Name *

Last Name *

Address 1 *

Address 2

City *

State *

Zip Code *

Phone No. *

Email *

Confirm Email *

Username *

Password Rules :
Contain at least 8 Characters
Contain at least 1 Number

Password *

Confirm Password *

Would you like to associate this user account with an organization? *

Drag the slider and move it to the right side before you submit the form.
This action is required in order to prove that you're a human.

Locked : form can't be submitted

- Create one sign-in per organization and make sure everyone has access to it
- Draft responses in Word and copy and paste later


Navigating Our Online Application



Dashboard

[Home](#) » [Dashboard](#) » [Open Applications](#) »

 My Applications

 Open Applications

 Test Users

Individual

Musicians Roster Musicians Roster FY 2015-16

Not applied yet.

[Apply](#)

Organizations

Community Impact Arts Grant Program CIAG FY2016-17

Not applied yet.

[Apply](#)

Organizational Grant Program OGP FY2016/17

Not applied yet.

[Apply](#)



[Apply](#)



Navigating Our Online Application

The screenshot shows a web application dashboard. At the top is a navigation bar with links: Home, Dashboard, Help, Portfolio, Sign Up Instructions, FAQs, Turn new design off, Clare Bakota, and Logout. Below this is a 'Dashboard' header with a breadcrumb trail: Home » Dashboard » Open Applications. A secondary navigation bar contains tabs: My Applications (highlighted), Open Applications, and Test Users, along with a 'Sort by Cycle' dropdown. The main content area displays a list of applications. The first application is 'Community Impact Arts Grant Program CIAG FY2016-17 #CIAG FY1600008'. Below the title is a link 'CIAG Application FY2016-17' and a blue status bar labeled 'In progress'. To the right of the status bar is a toolbar with icons for a dropdown menu, image, person, print, and document. A large blue arrow points from the text 'Select this tab to find the app in progress' to the 'My Applications' tab. Another blue arrow points from the text 'Skip ahead' to the 'In progress' status bar. A third blue arrow points from the text 'View support material' to the image icon in the toolbar. A fourth blue arrow points from the text 'Print/save a PDF' to the print and document icons in the toolbar.

Home Dashboard Help Portfolio Sign Up Instructions FAQs Turn new design off Clare Bakota Logout

Dashboard

Home » Dashboard » Open Applications »

My Applications Open Applications Test Users Sort by Cycle

Below is a list of the Los Angeles County Arts Commission open applications. Click **Apply** to begin applying to a grant.
To access your open application or to view your historical data, click **My Applications**.

Community Impact Arts Grant Program CIAG FY2016-17 #CIAG FY1600008	In progress	
CIAG Application FY2016-17		

Select this tab to find the app in progress

Skip ahead

View support material

Print/save a PDF

Navigating Our Online Application

New Design

Enriching Lives



[Home](#) [Help](#) [My Forms](#) [Portfolio](#) [Sign Up Instructions](#) [FAQs](#) [Manage Account](#)

User Details : Clare Bakota (Foxy Crafting) CIAG FY1600008
Grant Name : Community Impact Arts Grant Program > CIAG FY2016-17
Cycle Attempt : 1

[My Forms](#) > [CIAG FY2016-17](#) > CIAG Application FY2016-17 [[Table of Contents](#)]

CIAG Applicant Information

1. ORGANIZATION INFORMATION

Legal Name of Organization: *

The County of Los Angeles will utilize the organization's legal name on the grant contract

- Try turning off the old design if things get glitchy
- Remember to save!

Save

Save & Continue



Next



Questions?

Talia Gibas

Professional Development Programs
Manager

213-202-5939

tgibas@arts.lacounty.gov