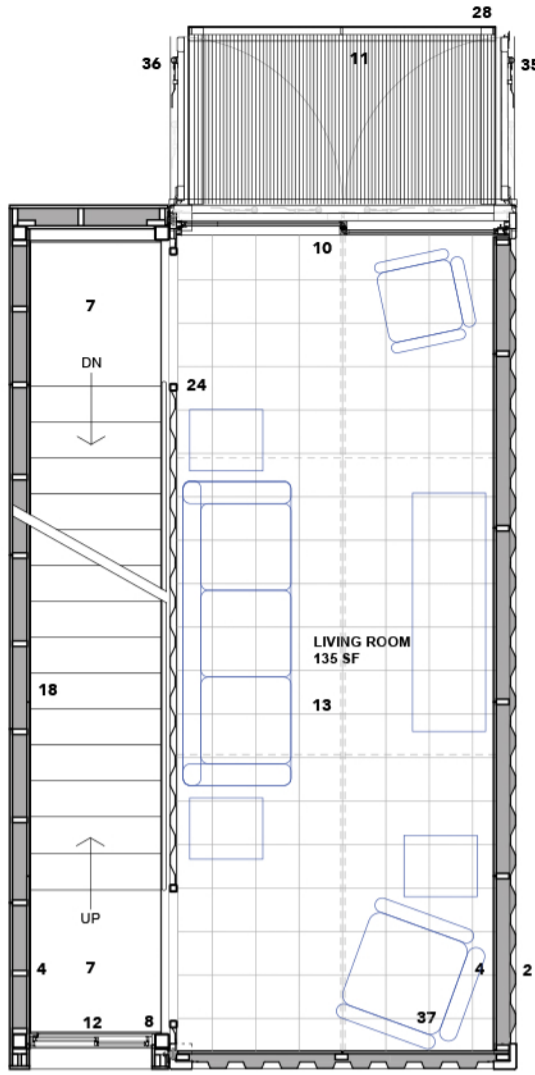
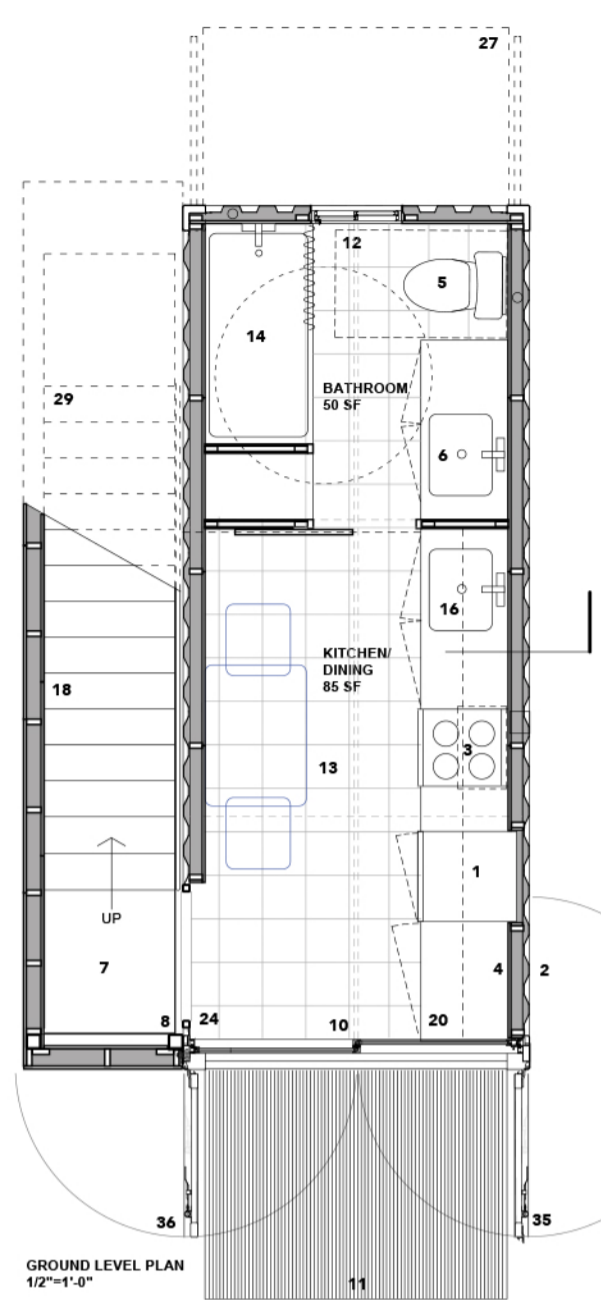


UPPER LEVEL PLAN
1/2"=1'-0"

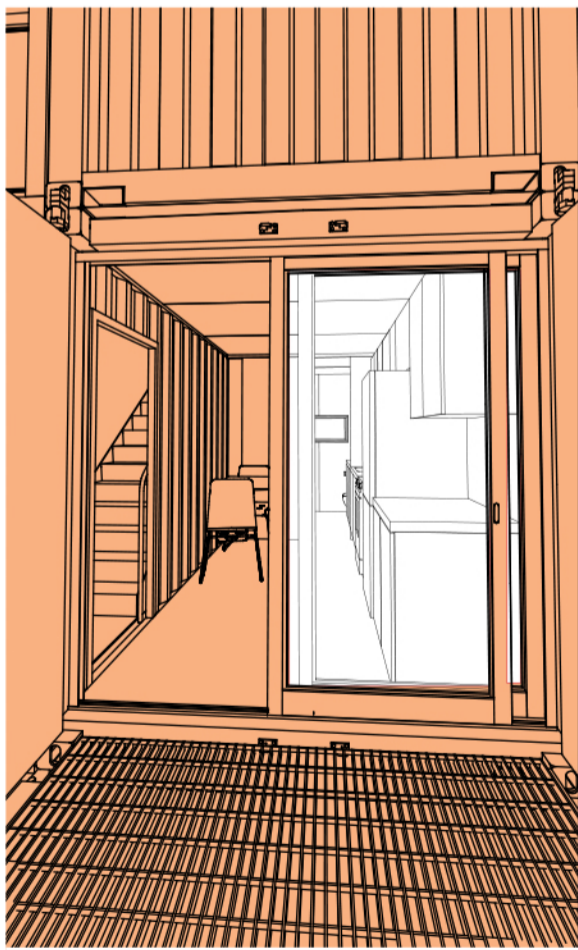


SECOND LEVEL PLAN
1/2"=1'-0"



GROUND LEVEL PLAN
1/2"=1'-0"

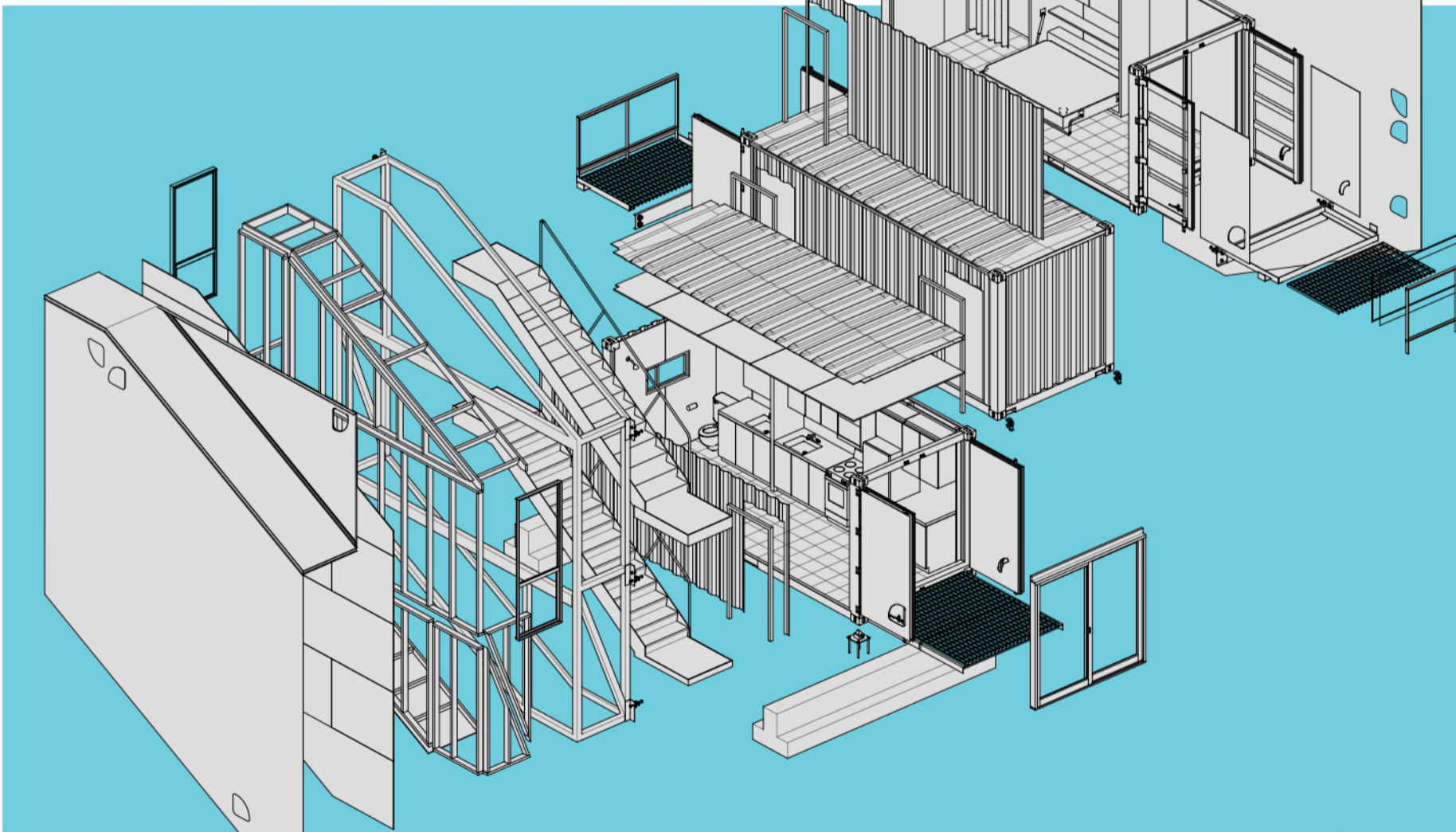
- | | | | | | |
|--|--|---|--|--|--|
| 1 AVANTI FFBM102D0W
10.2 CU. FT. REF/FREEZ | 4 PRE-FINISHED
3/4" PLYWOOD ALL
INTERIOR SURFACES
ON MIN.2X FRAMING | 7 RUBBER TILES 1/8" | 10 ARCADIA 5520
SERIES SLIDERS | 13 VCT FLOORING OVER (E)
CONTAINER FLOOR | 16 SWAN COMPOSITE DROP
IN KITCHEN SINK |
| 2 POLYISOCYANURATE
INSULATION AND
SPRAY POLYURETHANE
FOAM IN CORR.
FLUTES, TYP | 5 AMERICAN STANDARD
CADET TOILET | 8 HSS4X MOMENT FRAME,
ATTACH TO CONTAINER
AT CORNER FITTINGS W/
PROPRIETARY
WASHER/LOCK | 11 MCNICHOLS 1.5"
GALV. SWAGE
LOCKED BAR
GRATING OVER
L4X4 FRAME | 14 AQUATIC EVERYDAY
BATH/SHOWER | 17 CLADDING: 6ML ARCH
SHT VINYL OVER PLYWD
OVER 2X FRAMING |
| 3 HOTPOINT RA720KWH
2.4 CU. FT. 20" ELECTRIC
RANGE ACME-
MICROWAVE OVEN | 6 AMERICAN STANDARD
DROP IN LAVATORY | 9 GRAVEL FILL TO
FITTINGS | 12 ARCADIA 2080
SERIES SLDRS | 15 LATERAL REINFORCING:
WELDED HSS2X2 BRACE
AT UPPER CORNERS OF
(E) OPG | 18 1/8" RUBBER TREADS W/
INTEGRAL NOSING |



ADU ISO 20



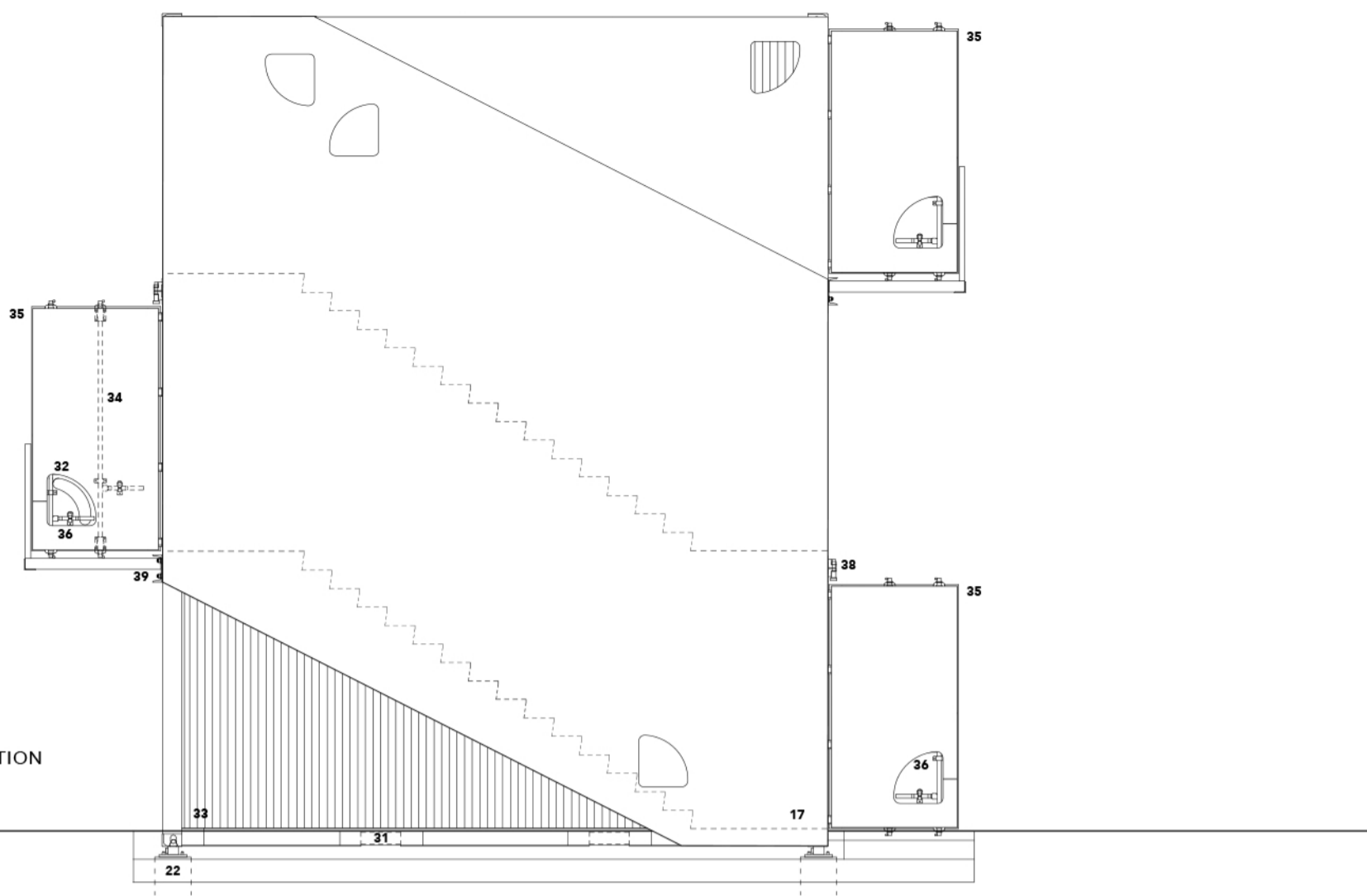
- 19 CIP CONCRETE FOOTINGS AND FOUNDATIONS
- 20 PREFAB MOD.CABINETS OVER (DOTTED) AND UNDER LAMINATE COUNTERTOP
- 21 WELDED 1/4" STL. PL. STAIR ASSBLY W/1/8" FOLDED STL. PL. TREAD/RISERS AND 1.25" OD STL PIPE HANDRAIL
- 22 TANDEMLOC VERTICAL CLAMP CONNECTOR ANCHORED INTO CIP CONCRETE FOOTING
- 23 18 GA. GSM JOIST ENCLOSURE
- 24 DOOR MOD: WELDED HSS2X2 FRAME AROUND OPG CUT THROUGH CORR. SIDEWALL
- 25 BATT INSULATION BETWEEN (E) JOISTS



X3V

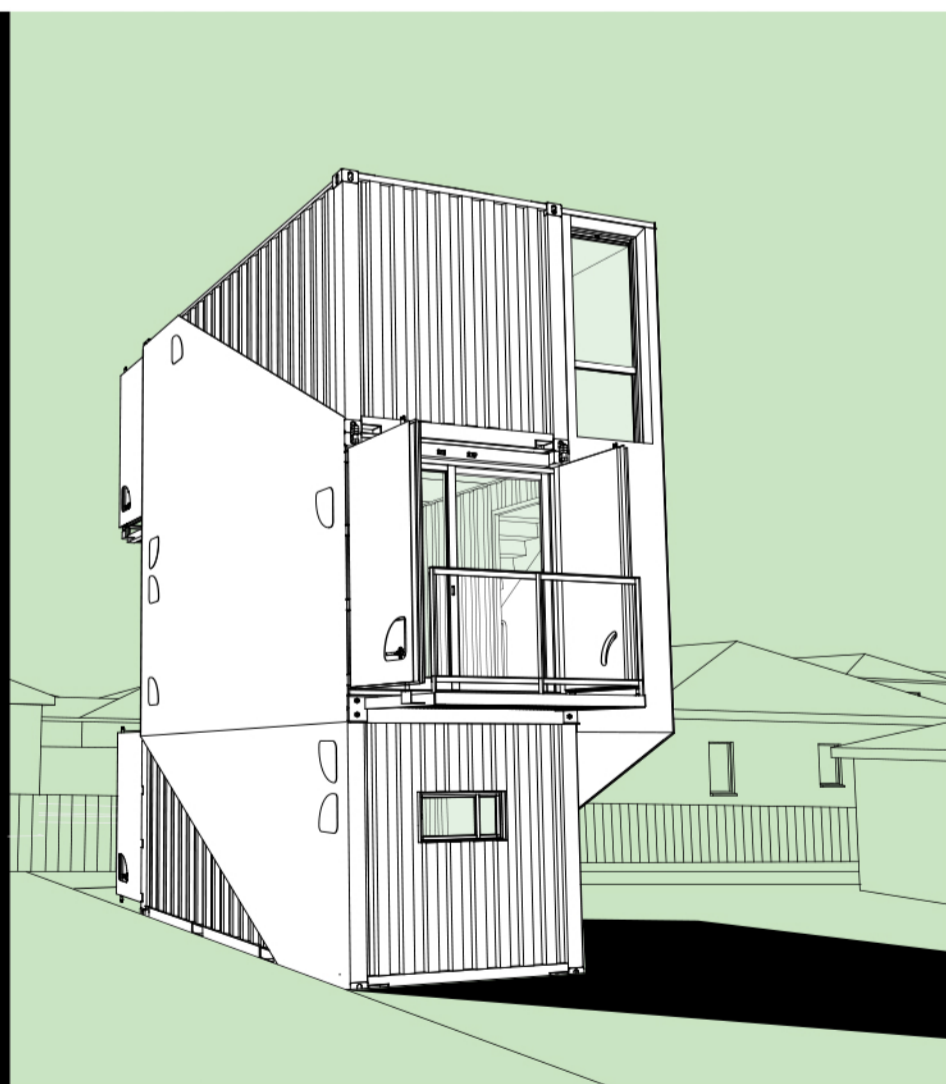
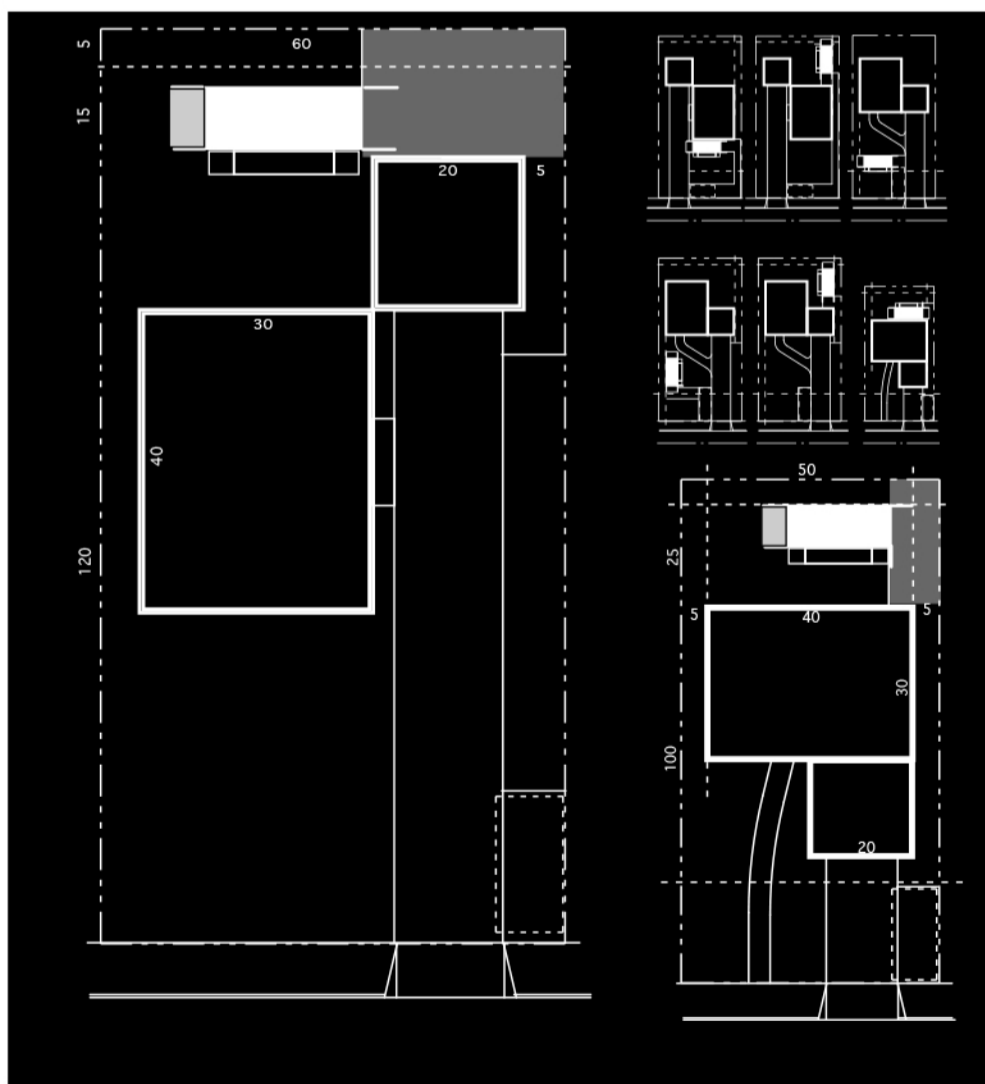
"Homelessness" is only superficially a problem of shelter. When Architecture takes this challenge on, however, it can sometimes result in well-intentioned but misguided flights of personal expression. The issue of homelessness goes far beyond the problem that it names and architecture should be uniquely situated—both pragmatically and expressively—to access not only the myriad problems of the homeless individuals themselves, but also the larger perceptual and ideological problems that have confounded society's response to date.

Still, architecture is stymied because the homeless problem confounds contemporary "go-to" strategies of critique and celebration. In this context, the critical attitude's inherent censure is socially insensitive, and its negativity is regressive, and celebration doesn't work if there are neither heroes to praise nor exemplars to promote. What remains for architecture are cleverness and economy, and the disciplinary trust built up over millennia that these are enough and worthy.



STAIR-SIDE ELEVATION
1/2"=1'-0"

- 26 SINGLE PLY ROOF MEMBRANE OVER 3/4" PLY SUBSTRATE IN 2X FRAMING
- 27 DECK ABOVE SHOWN DOTTED CANTILEVERED OFF CORNER FITTINGS
- 28 .5"X2" STL BAR AND L2X2 FRAME GUARDRAIL W 3/8" EXP. MTL INFILL
- 29 STAIR ABOVE SHOWN DOTTED HUNG BY HSS FRAME FROM CORNER FITTINGS
- 30 QUEEN SIZE MURPHY BED KIT, FRAMING: CREATE-A-BED
- 31 1/8" STL PL. FORKLIFT-HOLE COVER/ REINFORCING-WELD
- 32 THROUGH DOOR ACCESS SLOT TO PROVIDE LOCKING FROM INTERIOR
- 33 USED (ONE TRIP) ISO STD. 20' SHIPPING CONTAINER, TYP.
- 34 SECOND SET OF LATCH ASSBLY REMOVED FOR CONVENIENCE, TYP.
- 35 (E) CONTAINER DOORS RETAINED FOR SECURITY
- 36 CONTAINER DOOR COVERINGS: 12GA. GSM, PNT. WITH LATCH ACCESS HOLE AS SHOWN
- 37 NOTIONAL FURNITURE LAYOUT SHOWN IN BLUE
- 38 TANDEMLOC UNIVERSAL BRIDGE CLAMP
- 39 PROPRIETARY DUAL PURPOSE FITTINGS TO CLAMP CONTAINERS AND ANCHOR DECK AT MC 10X8.4
- 40 18 GA. GSM FLASH'G AT GAP BETWEEN CONTAINER



The container's simple form and noble proportions are the natural end product of years of refinement in the harshest physical and economic environments. They ask only for thoughtful arrangement, according to their own modular logic (relying only on minimal internal modification and corner fittings for connection and anchoring, for example), to guarantee a dignified and respectful result.

By avoiding extensive modification and sticking with the natural dimensions, systems and fittings already established for the container and its extensive infrastructural support system, the design takes maximum advantage of the container's inherent economy, strength and durability.

Needless to say, this is crucial to the ADUs ability to successfully address the homeless problem, considering the unique challenge this population presents. Furthermore, the design's architectural "neutrality" makes it more likely to be able to "fit in" to the greatest variety of neighborhood settings, from the expected urban infill scenario to the more surprising suburban scenario, with its likely NIMBY reactions.

Finally, the container's modular logic, extensive infrastructure support system (transportation and procurement), and minimal costs make it ideal for quick deployment in this ongoing crisis.